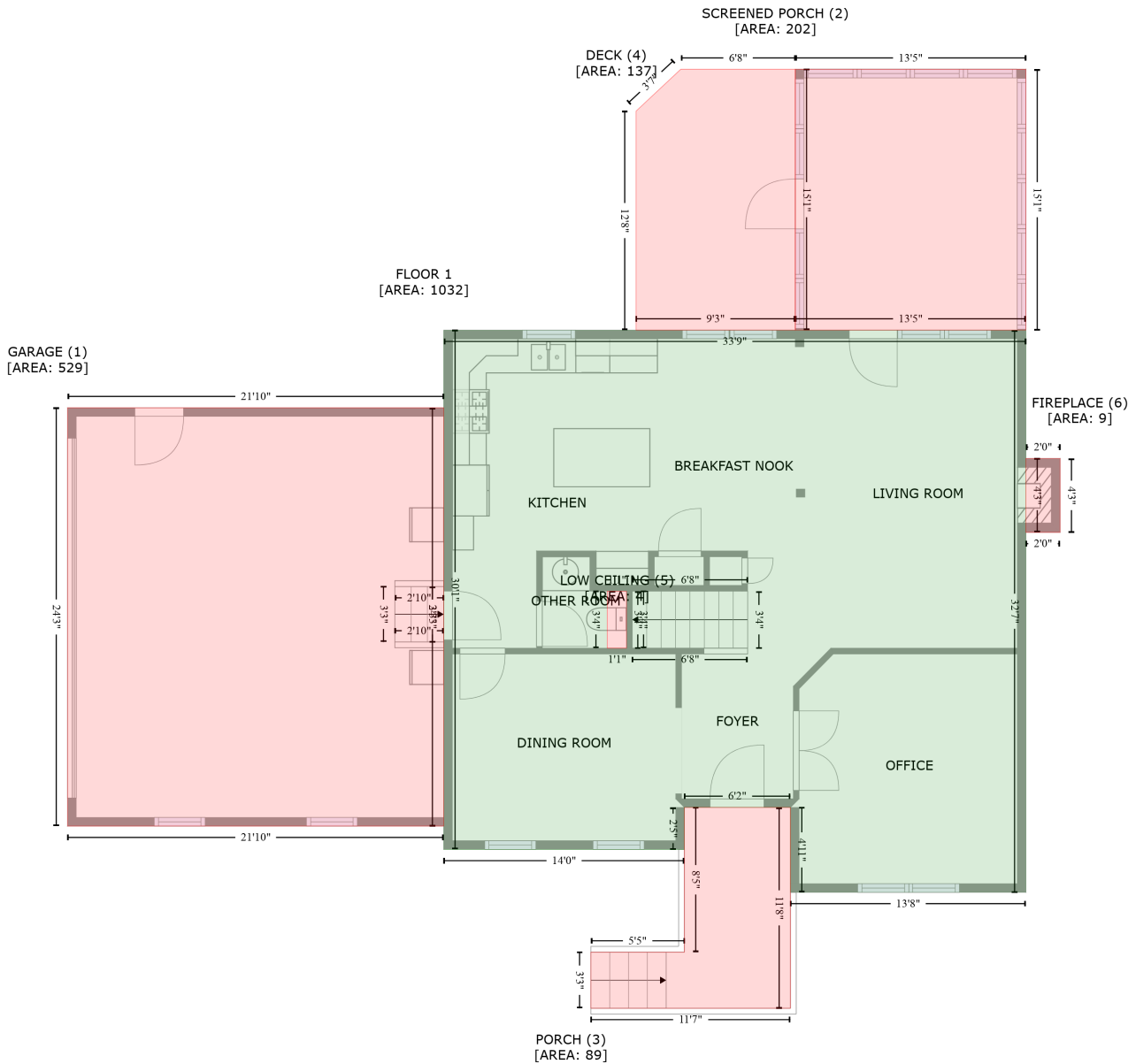


# 102 Wittenham Drive, Cary, Wake County, North Carolina, United States, 27519

Gross Living Area: 2534 sq. ft



Space	Area (sq. ft)	Calculation <small>Coordinate Polygon Area Algorithm using inches</small>
FLOOR 1 (Living area)	1032	$-\left((663 + 663) * (283.4 - 674.5) + (663 + 499.1) * (674.5 - 674.5) + (499.1 + 499.1) * (674.5 - 615.4) + (499.1 + 425.3) * (615.4 - 615.4) + (425.3 + 425.3) * (615.4 - 644.6) + (425.3 + 257.8) * (644.6 - 644.6) + (257.8 + 257.8) * (644.6 - 283.4) + (257.8 + 663) * (283.4 - 283.4)\right) * 0.5 + 0.00694 - \left(-((385 + 371.6) * (465 - 465) + (371.6 + 371.6) * (465 - 504.7) + (371.6 + 385) * (504.7 - 504.7) + (385 + 385) * (504.7 - 465))\right) * 0.5 * 0.00694$
GARAGE	529	$-\left((-4 + 257.8) * (337.4 - 337.4) + (257.8 + 257.8) * (337.4 - 628.4) + (257.8 + -4) * (628.4 - 628.4)\right)$

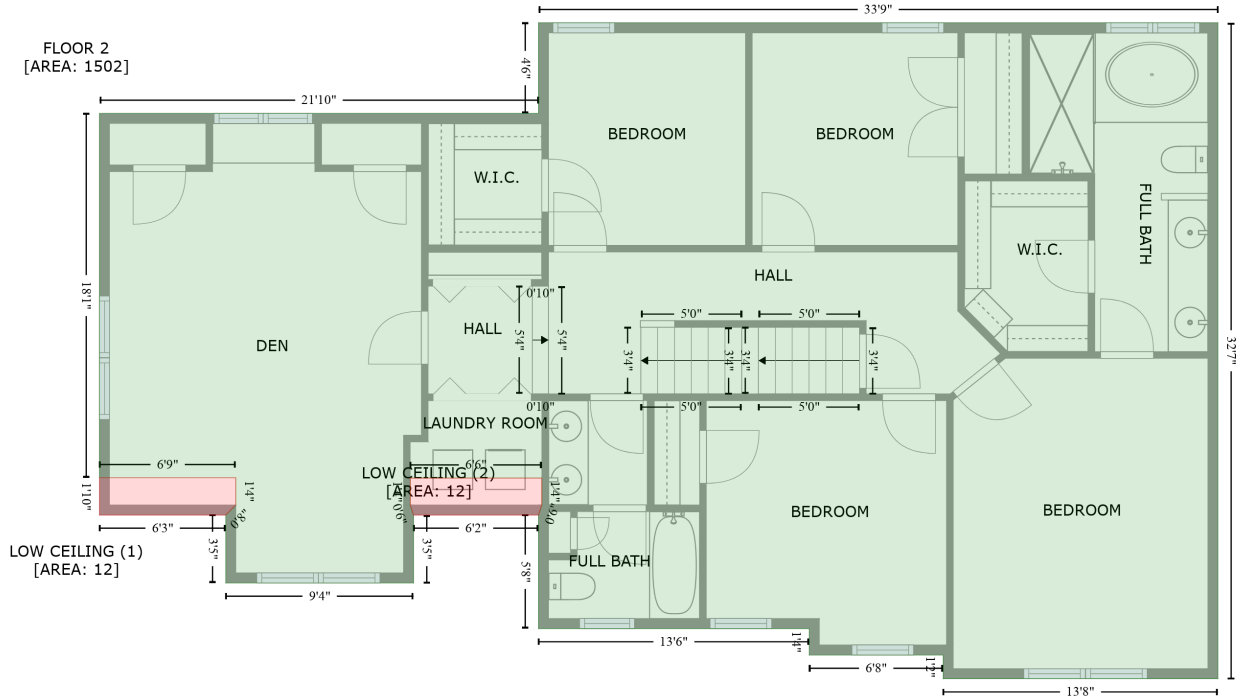
# 102 Wittenham Drive, Cary, Wake County, North Carolina, United States, 27519

Gross Living Area: 2534 sq. ft

Space	Area (sq. ft)	Calculation <small>Coordinate Polygon Area Algorithm using inches</small>
(Non-living area)		$+ (-4 + -4) * (628.4 - 337.4) * 0.5 * 0.00694$
SCREENED PORCH (Non-living area)	202	$-((663 + 663) * (101.9 - 283.4) + (663 + 502.5) * (283.4 - 283.4) + (502.5 + 502.5) * (283.4 - 101.9) + (502.5 + 663) * (101.9 - 101.9)) * 0.5 * 0.00694$
PORCH (Non-living area)	89	$-((499.1 + 499.1) * (615.4 - 755.2) + (499.1 + 360.2) * (755.2 - 755.2) + (360.2 + 360.2) * (755.2 - 716.1) + (360.2 + 425.3) * (716.1 - 716.1) + (425.3 + 425.3) * (716.1 - 615.4) + (425.3 + 499.1) * (615.4 - 615.4)) * 0.5 * 0.00694$
DECK (Non-living area)	137	$-((502.5 + 502.5) * (101.9 - 283.4) + (502.5 + 391.6) * (283.4 - 283.4) + (391.6 + 391.6) * (283.4 - 131) + (391.6 + 422.8) * (131 - 101.9) + (422.8 + 502.5) * (101.9 - 101.9)) * 0.5 * 0.00694$
LOW CEILING (Non-living area)	4	$-((385 + 385) * (465 - 504.7) + (385 + 371.6) * (504.7 - 504.7) + (371.6 + 371.6) * (504.7 - 465) + (371.6 + 385) * (465 - 465)) * 0.5 * 0.00694$
FIREPLACE (Non-living area)	9	$-((663 + 686.8) * (372.7 - 372.7) + (686.8 + 686.8) * (372.7 - 424.1) + (686.8 + 663) * (424.1 - 424.1) + (663 + 663) * (424.1 - 372.7)) * 0.5 * 0.00694$

# 102 Wittenham Drive, Cary, Wake County, North Carolina, United States, 27519

Gross Living Area: 2534 sq. ft



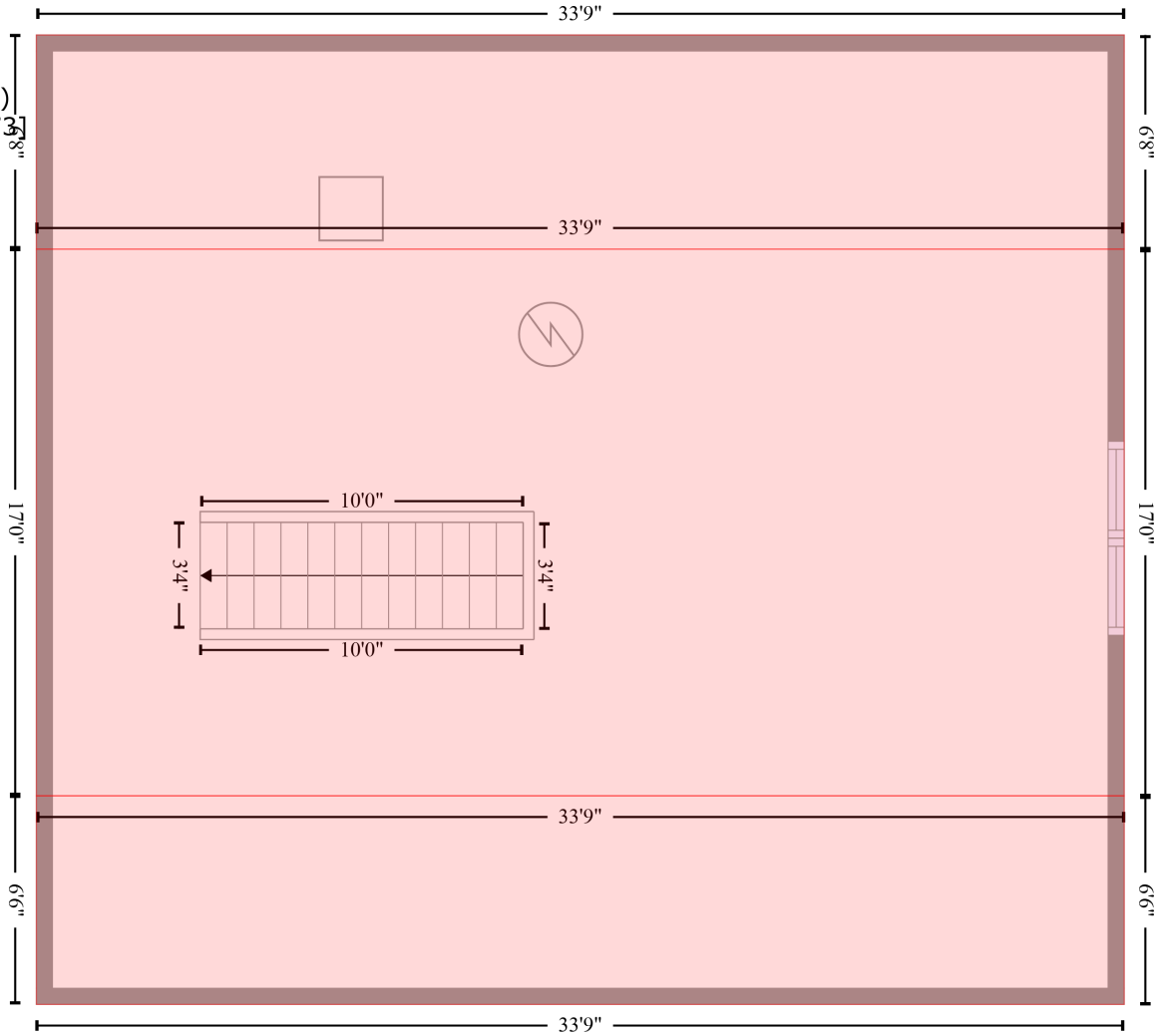
Space	Area (sq. ft)	Calculation
FLOOR 2 (Living area)	1502	Coordinate Polygon Area Algorithm using inches $-((663 + 663) * (283.4 - 674.5) + (663 + 499.1) * (674.5 - 674.5) + (499.1 + 499.1) * (674.5 - 660.4) + (499.1 + 419.3) * (660.4 - 660.4) + (419.3 + 419.3) * (660.4 - 644.6) + (419.3 + 257.8) * (644.6 - 644.6) + (257.8 + 257.8) * (644.6 - 576.9) + (257.8 + 259.8) * (576.9 - 570.9) + (259.8 + 259.8) * (570.9 - 554.9) + (259.8 + 181.3) * (554.9 - 554.9) + (181.3 + 181.3) * (554.9 - 570.9) + (181.3 + 183.3) * (570.9 - 576.9) + (183.3 + 183.3) * (576.9 - 617.4) + (183.3 + 71.3) * (617.4 - 617.4) + (71.3 + 71.3) * (617.4 - 576.9) + (71.3 + 77.3) * (576.9 - 570.9) + (77.3 + 77.3) * (570.9 - 554.7) + (77.3 + -4) * (554.7 - 554.7) + (-4 + -4) * (554.7 - 337.4) + (-4 + 257.8) * (337.4 - 337.4) + (257.8 + 257.8) * (337.4 - 283.4) + (257.8 + 663) * (283.4 - 283.4)) * 0.5 * 0.00694$
LOW CEILING (Non-living area)	12	$-((77.3 + 77.3) * (554.7 - 570.9) + (77.3 + 71.3) * (570.9 - 576.9) + (71.3 + -4) * (576.9 - 576.9) + (-4 + -4) * (576.9 - 554.7) + (-4 + 77.3) * (554.7 - 554.7)) * 0.5 * 0.00694$
LOW CEILING (Non-living area)	12	$-((259.8 + 259.8) * (554.9 - 570.9) + (259.8 + 257.8) * (570.9 - 576.9) + (257.8 + 183.3) * (576.9 - 576.9) + (183.3 + 181.3) * (576.9 - 570.9) + (181.3 + 181.3) * (570.9 - 554.9) + (181.3 + 259.8) * (554.9 - 554.9)) * 0.5 * 0.00694$

# 102 Wittenham Drive, Cary, Wake County, North Carolina, United States, 27519

Gross Living Area: 2534 sq. ft

LOW CEILING (2)  
[AREA: 225]

ATTIC (3)  
[AREA: 573]



LOW CEILING (1)  
[AREA: 219]

Space	Area (sq. ft)	Calculation <small>Coordinate Polygon Area Algorithm using inches</small>
LOW CEILING (Non-living area)	219	$-((663 + 663) * (566.9 - 644.6) + (663 + 257.8) * (644.6 - 644.6) + (257.8 + 257.8) * (644.6 - 566.9) + (257.8 + 663) * (566.9 - 566.9)) * 0.5 * 0.00694$
LOW CEILING (Non-living area)	225	$-((663 + 663) * (283.4 - 363.2) + (663 + 257.8) * (363.2 - 363.2) + (257.8 + 257.8) * (363.2 - 283.4) + (257.8 + 663) * (283.4 - 283.4)) * 0.5 * 0.00694$
ATTIC (Non-living area)	573	$-((663 + 663) * (363.2 - 566.9) + (663 + 257.8) * (566.9 - 566.9) + (257.8 + 257.8) * (566.9 - 363.2) + (257.8 + 663) * (363.2 - 363.2)) * 0.5 * 0.00694$