

STONE POINT
ON THE LAKE



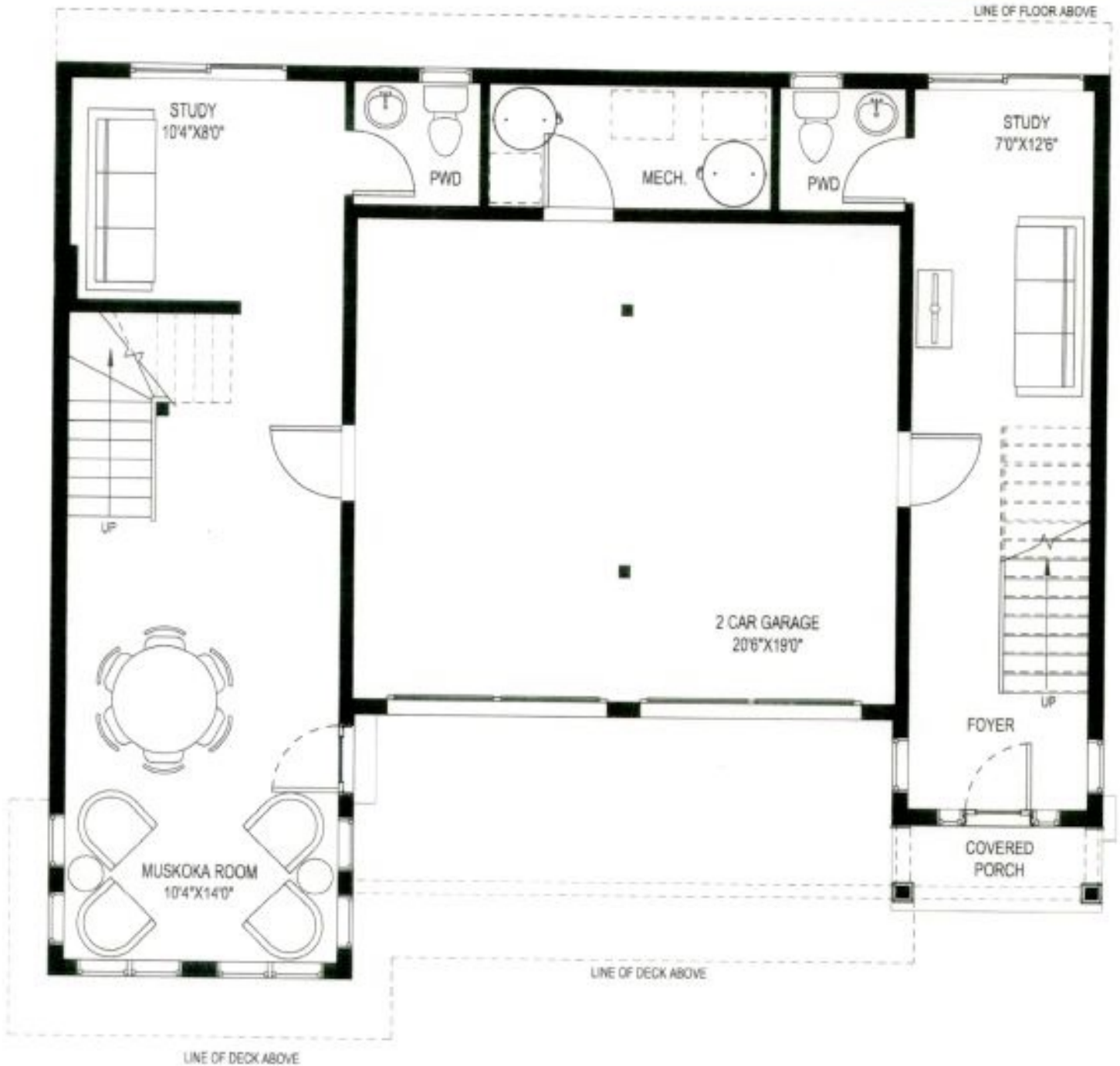
THE LAKEHOUSE (3074 SQ. FT.)

STONE POINT ROAD, LOT 8

TOWN OF INNISFIL



renaissance
nouveau
homes & design inc.



LOWER LEVEL FLOOR PLAN

N.T.S.

STONE
ON THE
LAKE
POINT

THE LAKEHOUSE (3074 SQ. FT.)

STONE POINT ROAD, LOT 8

TOWN OF INNISFIL



MAIN LEVEL FLOOR PLAN

N.T.S.



THE LAKEHOUSE (3074 SQ. FT.)

STONE POINT ROAD, LOT 8

TOWN OF INNISFIL



SECOND LEVEL FLOOR PLAN

N.T.S.

Story 1117 Stoney Pt

From: Heather Jones (hrjones@rogers.com)

To: daniellesudbrown@live.com

Date: Tuesday, October 22, 2024 at 07:32 a.m. EDT

Welcome to 1117 Stoney Point, located in the picturesque lakeside community of Lefroy. This modern contemporary home showcases low-maintenance KWP Naturetech engineered wood siding and trim. Its sleek design is characterized by clean lines and a symmetrical facade, contributing to a welcoming and stylish look.

This home is truly one-of-a-kind, offering the potential to be transformed into two distinct living spaces or serve as a shared family residence, each with its own entrance and privacy.

As you enter through the right side of the house on the lower level, you'll be greeted by the warmth of radiant floor heating. This level features a charming Muskoka room and a study, along with a convenient two-piece bath. Ascend the Mono Stringer staircase to the main level, which includes a spacious kitchen, living room, and dining area. Step outside to a shared Duradeck patio that showcases breathtaking views.

The upper floor boasts three bedrooms, complete with a semi-ensuite bathroom. On the left side, the entry mirrors the right side's features, offering two additional bedrooms and a semi-ensuite. This home is perfectly designed for modern living, with numerous upgrades to create your own personal paradise.

Heather Jones

Sales Representative

The Advance Team

C: 705-241-1408

www.advancerealestate.com

E: hrjones@rogers.com

Coldwell Banker TREC Brokerage