


# 441 Roebing Ct, Cranberry Twp, PA, US



## Property summary

 **1** Garages

 **3** Bedrooms

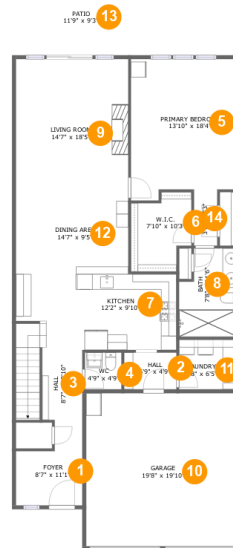
 **2** Bathrooms

 **1** Half baths

 **2** Floors

 **1,852** Gross living area sqft

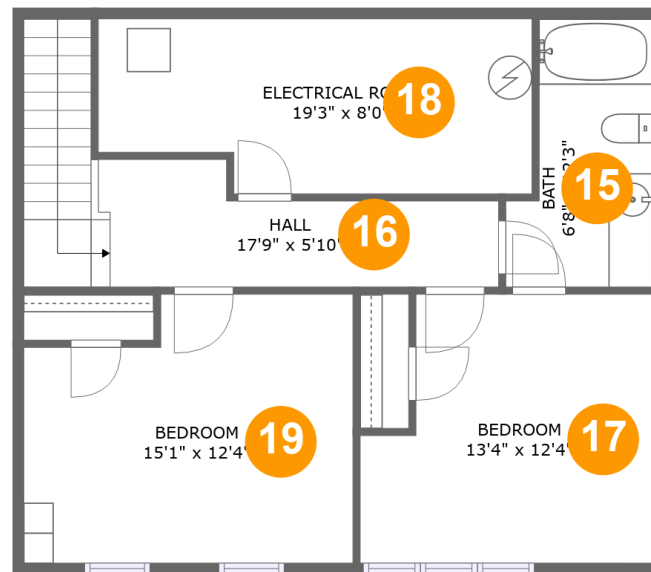
 **2,682** Total sqft

**441 Roebing Ct, Cranberry Twp, PA, US****Room dimensions****Floor 1****Total sqft: 1924 Living area: 1251**

| #  |                 | Dimensions     | sqft       | Counted as living area |
|----|-----------------|----------------|------------|------------------------|
| 1  | Foyer           | 8'7" x 11'1"   | 75 sq. ft  | Yes                    |
| 2  | Hall            | 6'9" x 4'9"    | 32 sq. ft  | Yes                    |
| 3  | Hall            | 8'7" x 18'10"  | 158 sq. ft | No                     |
| 4  | WC              | 4'9" x 4'9"    | 22 sq. ft  | Yes                    |
| 5  | Primary Bedroom | 13'10" x 18'4" | 239 sq. ft | Yes                    |
| 6  | W.I.C.          | 7'10" x 10'3"  | 68 sq. ft  | Yes                    |
| 7  | Kitchen         | 12'2" x 9'10"  | 119 sq. ft | Yes                    |
| 8  | Bath            | 7'8" x 11'6"   | 79 sq. ft  | Yes                    |
| 9  | Living Room     | 14'7" x 18'5"  | 267 sq. ft | Yes                    |
| 10 | Garage          | 19'8" x 19'10" | 389 sq. ft | No                     |
| 11 | Laundry         | 7'8" x 6'5"    | 49 sq. ft  | Yes                    |

**441 Roebing Ct, Cranberry Twp, PA, US**

| #  |             | Dimensions   | sqft       | Counted as living area |
|----|-------------|--------------|------------|------------------------|
| 12 | Dining Area | 14'7" x 9'5" | 137 sq. ft | Yes                    |
| 13 | Patio       | 11'9" x 9'3" | 97 sq. ft  | No                     |
| 14 | Hall        | 3'0" x 7'3"  | 22 sq. ft  | Yes                    |

**441 Roebing Ct, Cranberry Twp, PA, US****Room dimensions**

Floor 2

Total sqft: 758 Living area: 601

| #  |                 | Dimensions    | sqft       | Counted as living area |
|----|-----------------|---------------|------------|------------------------|
| 15 | Bath            | 6'8" x 12'3"  | 69 sq. ft  | Yes                    |
| 16 | Hall            | 17'9" x 5'10" | 123 sq. ft | Yes                    |
| 17 | Bedroom         | 13'4" x 12'4" | 148 sq. ft | Yes                    |
| 18 | Electrical Room | 19'3" x 8'0"  | 147 sq. ft | No                     |
| 19 | Bedroom         | 15'1" x 12'4" | 170 sq. ft | Yes                    |

# 441 Roebing Ct, Cranberry Twp, PA, US

## 1 Floor 1 - Foyer



**Dimensions:** 8'7" x 11'1"  
**Area:** 75 sq. ft  
**Counted as living area:** Yes

**Heated:** Yes  
**Finished:** Yes  
**Enclosed:** Yes  
**Contiguous:** Yes  
**Permitted:** Yes  
**Wet space:** No  
**Addition:** No  
**Conversion:** No

## 2 Floor 1 - Hall

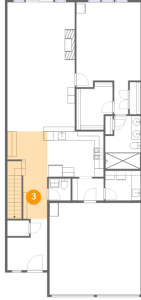


**Dimensions:** 6'9" x 4'9"  
**Area:** 32 sq. ft  
**Counted as living area:** Yes

**Heated:** Yes  
**Finished:** Yes  
**Enclosed:** Yes  
**Contiguous:** Yes  
**Permitted:** Yes  
**Wet space:** No  
**Addition:** No  
**Conversion:** No

# 441 Roebing Ct, Cranberry Twp, PA, US

## 3 Floor 1 - Hall



Dimensions: 8'7" x 18'10"  
Area: 158 sq. ft  
Counted as living area: No

Heated: Yes  
Finished: Yes  
Enclosed: Yes  
Contiguous: Yes  
Permitted: Yes  
Wet space: No  
Addition: No  
Conversion: No

## 4 Floor 1 - WC



Dimensions: 4'9" x 4'9"  
Area: 22 sq. ft  
Counted as living area: Yes

Heated: Yes  
Finished: Yes  
Enclosed: Yes  
Contiguous: Yes  
Permitted: Yes  
Wet space: Yes  
Addition: No  
Conversion: No

## 5 Floor 1 - Primary Bedroom



Dimensions: 13'10" x 18'4"  
Area: 239 sq. ft  
Counted as living area: Yes

Heated: Yes  
Finished: Yes  
Enclosed: Yes  
Contiguous: Yes  
Permitted: Yes  
Wet space: No  
Addition: No  
Conversion: No

# 441 Roebing Ct, Cranberry Twp, PA, US

## 6 Floor 1 - W.I.C.



Dimensions: 7'10" x 10'3"  
Area: 68 sq. ft  
Counted as living area: Yes

Heated: Yes  
Finished: Yes  
Enclosed: Yes  
Contiguous: Yes  
Permitted: Yes  
Wet space: No  
Addition: No  
Conversion: No

## 7 Floor 1 - Kitchen



Dimensions: 12'2" x 9'10"  
Area: 119 sq. ft  
Counted as living area: Yes

Heated: Yes  
Finished: Yes  
Enclosed: Yes  
Contiguous: Yes  
Permitted: Yes  
Wet space: No  
Addition: No  
Conversion: No

## 8 Floor 1 - Bath



Dimensions: 7'8" x 11'6"  
Area: 79 sq. ft  
Counted as living area: Yes

Heated: Yes  
Finished: Yes  
Enclosed: Yes  
Contiguous: Yes  
Permitted: Yes  
Wet space: Yes  
Addition: No  
Conversion: No

**441 Roebing Ct, Cranberry Twp, PA, US****9 Floor 1 - Living Room**

**Dimensions:** 14'7" x 18'5"  
**Area:** 267 sq. ft  
**Counted as living area:** Yes

**Heated:** Yes  
**Finished:** Yes  
**Enclosed:** Yes  
**Contiguous:** Yes  
**Permitted:** Yes  
**Wet space:** No  
**Addition:** No  
**Conversion:** No

**10 Floor 1 - Garage**

**Dimensions:** 19'8" x 19'10"  
**Area:** 389 sq. ft  
**Counted as living area:** No

**Heated:** No  
**Finished:** No  
**Enclosed:** Yes  
**Contiguous:** Yes  
**Permitted:** Yes  
**Wet space:** No  
**Addition:** No  
**Conversion:** No

**11 Floor 1 - Laundry**

**Dimensions:** 7'8" x 6'5"  
**Area:** 49 sq. ft  
**Counted as living area:** Yes

**Heated:** Yes  
**Finished:** Yes  
**Enclosed:** Yes  
**Contiguous:** Yes  
**Permitted:** Yes  
**Wet space:** No  
**Addition:** No  
**Conversion:** No



# 441 Roebing Ct, Cranberry Twp, PA, US

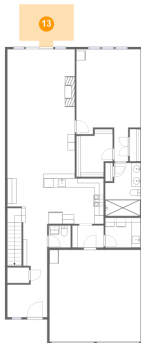
## 12 Floor 1 - Dining Area



Dimensions: 14'7" x 9'5"  
Area: 137 sq. ft  
Counted as living area: Yes

Heated: Yes  
Finished: Yes  
Enclosed: Yes  
Contiguous: Yes  
Permitted: Yes  
Wet space: No  
Addition: No  
Conversion: No

## 13 Floor 1 - Patio



Dimensions: 11'9" x 9'3"  
Area: 97 sq. ft  
Counted as living area: No

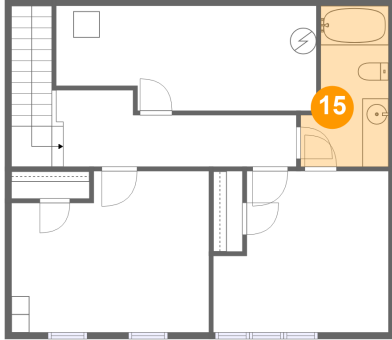
Heated: No  
Finished: Yes  
Enclosed: No  
Contiguous: Yes  
Permitted: Yes  
Wet space: No  
Addition: No  
Conversion: No

## 14 Floor 1 - Hall



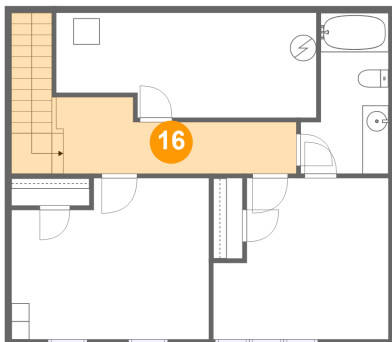
Dimensions: 3'0" x 7'3"  
Area: 22 sq. ft  
Counted as living area: Yes

Heated: Yes  
Finished: Yes  
Enclosed: Yes  
Contiguous: Yes  
Permitted: Yes  
Wet space: No  
Addition: No  
Conversion: No

**441 Roebing Ct, Cranberry Twp, PA, US****15 Floor 2 - Bath**

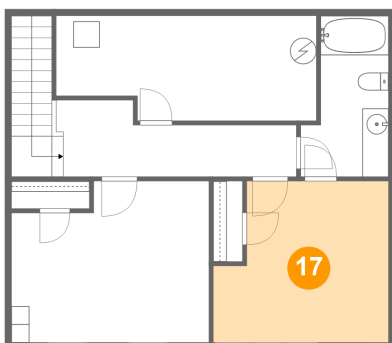
Dimensions: 6'8" x 12'3"  
Area: 69 sq. ft  
Counted as living area: Yes

Heated: Yes  
Finished: Yes  
Enclosed: Yes  
Contiguous: Yes  
Permitted: Yes  
Wet space: Yes  
Addition: No  
Conversion: No

**16 Floor 2 - Hall**

Dimensions: 17'9" x 5'10"  
Area: 123 sq. ft  
Counted as living area: Yes

Heated: Yes  
Finished: Yes  
Enclosed: Yes  
Contiguous: Yes  
Permitted: Yes  
Wet space: No  
Addition: No  
Conversion: No

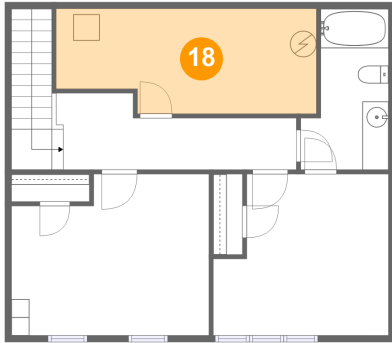
**17 Floor 2 - Bedroom**

Dimensions: 13'4" x 12'4"  
Area: 148 sq. ft  
Counted as living area: Yes

Heated: Yes  
Finished: Yes  
Enclosed: Yes  
Contiguous: Yes  
Permitted: Yes  
Wet space: No  
Addition: No  
Conversion: No

# 441 Roebing Ct, Cranberry Twp, PA, US

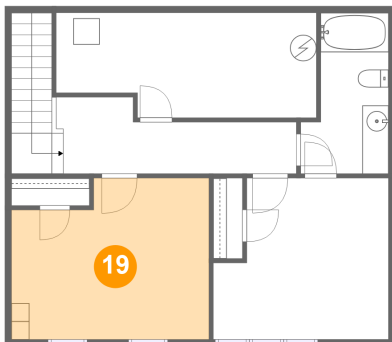
## 18 Floor 2 - Electrical Room



Dimensions: 19'3" x 8'0"  
Area: 147 sq. ft  
Counted as living area: No

Heated: No  
Finished: No  
Enclosed: Yes  
Contiguous: Yes  
Permitted: Yes  
Wet space: No  
Addition: No  
Conversion: No

## 19 Floor 2 - Bedroom



Dimensions: 15'1" x 12'4"  
Area: 170 sq. ft  
Counted as living area: Yes

Heated: Yes  
Finished: Yes  
Enclosed: Yes  
Contiguous: Yes  
Permitted: Yes  
Wet space: No  
Addition: No  
Conversion: No