

1008-258 Nelson's Court

New Westminster BC V3L 0J9

Total Area 855 SQ.FT.

Balcony Area: 145 SQ.FT.

Ceiling Height: 8'3"

2



BEDROOMS

2

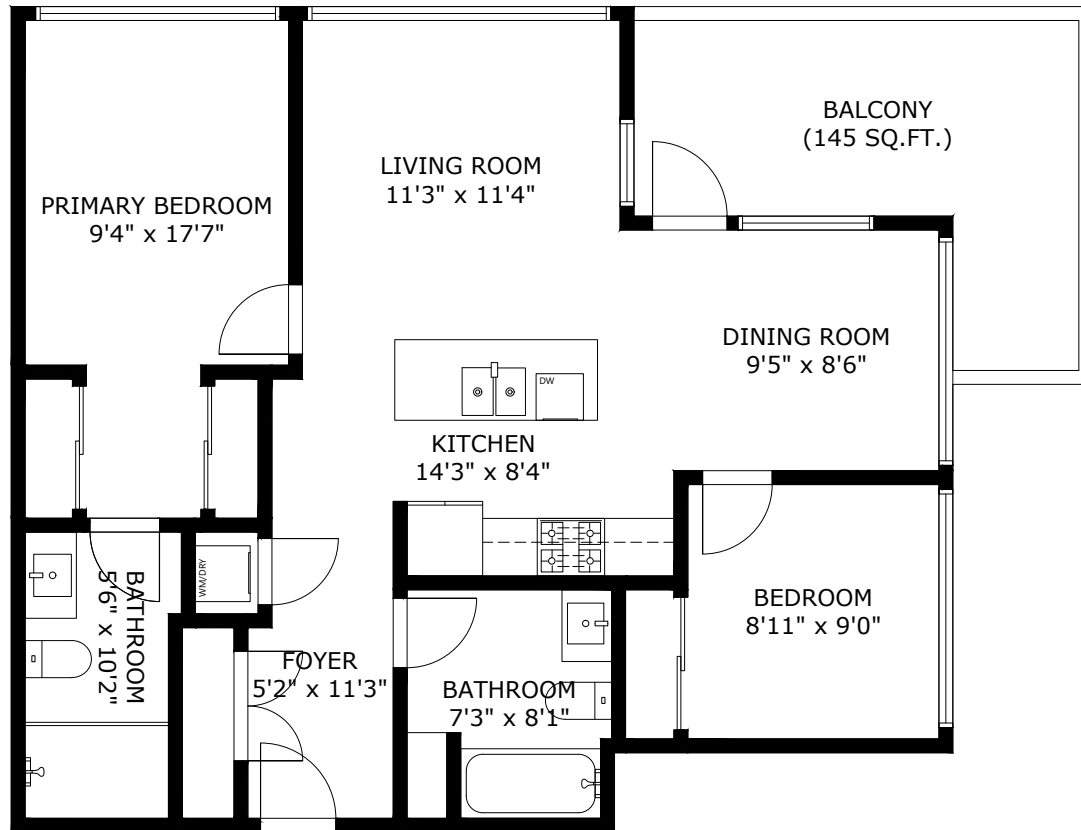


BATHROOMS

855



TOTAL SQ.FT.



1008-258 NELSON'S CRT NEW WESTMINSTER BC V3L 0J9

Measurements are approximate and may not be to scale. Gross measurements provided by agent.
The floor plan illustration is not suitable for construction/architectural purposes.
This communication is not intended to cause or induce breach of an existing agency agreement


3D IMMERSIVE
Tours Photos Floor Plans

Professionally measured by 3D Immersive Marketing Ltd.

Lead Floor Planner: *Sue Alexander*
Quality Assurance: *Dianne Graham*