

**908 Whiteford Way, Glen Cairn, Kanata, Ontario,  
Canada, K2M 0C9**



**Property summary**

 **1** Garages

 **4** Bedrooms

 **2** Bathrooms

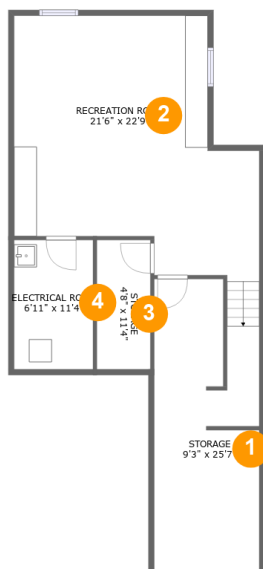
 **1** Half baths

 **3** Floors

 **2,037**  
Gross living  
area sqft

 **3,227**  
Total sqft

908 Whiteford Way, Glen Cairn, Kanata, Ontario,  
Canada, K2M 0C9



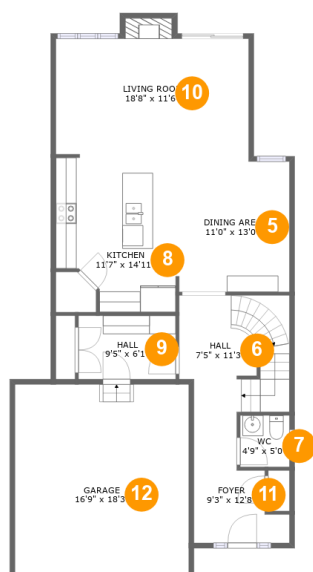
## Room dimensions

Floor 1

Total sqft: 850 Living area: 0

#		Dimensions	sqft	Counted as living area
1	Storage	9'3" x 25'7"	230 sq. ft	No
2	Recreation Room	21'6" x 22'9"	396 sq. ft	No
3	Storage	4'8" x 11'4"	53 sq. ft	No
4	Electrical Room	6'11" x 11'4"	79 sq. ft	No

908 Whiteford Way, Glen Cairn, Kanata, Ontario,  
Canada, K2M 0C9



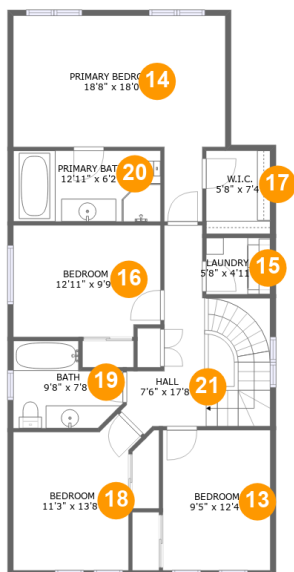
## Room dimensions

Floor 2

Total sqft: 1253 Living area: 913

#		Dimensions	sqft	Counted as living area
5	Dining Area	11'0" x 13'0"	141 sq. ft	Yes
6	Hall	7'5" x 11'3"	115 sq. ft	Yes
7	WC	4'9" x 5'0"	24 sq. ft	Yes
8	Kitchen	11'7" x 14'11"	157 sq. ft	Yes
9	Hall	9'5" x 6'1"	58 sq. ft	Yes
10	Living Room	18'8" x 11'6"	222 sq. ft	Yes
11	Foyer	9'3" x 12'8"	78 sq. ft	Yes
12	Garage	16'9" x 18'3"	307 sq. ft	No

908 Whiteford Way, Glen Cairn, Kanata, Ontario,  
Canada, K2M 0C9



## Room dimensions

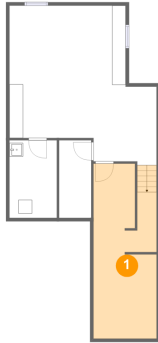
Floor 3

Total sqft: 1124 Living area: 1124

#		Dimensions	sqft	Counted as living area
13	Bedroom	9'5" x 12'4"	116 sq. ft	Yes
14	Primary Bedroom	18'8" x 18'0"	236 sq. ft	Yes
15	Laundry	5'8" x 4'11"	28 sq. ft	Yes
16	Bedroom	12'11" x 9'9"	124 sq. ft	Yes
17	W.I.C.	5'8" x 7'4"	41 sq. ft	Yes
18	Bedroom	11'3" x 13'8"	127 sq. ft	Yes
19	Bath	9'8" x 7'8"	61 sq. ft	Yes
20	Primary Bath	12'11" x 6'2"	80 sq. ft	Yes
21	Hall	7'6" x 17'8"	143 sq. ft	Yes

908 Whiteford Way, Glen Cairn, Kanata, Ontario,  
Canada, K2M 0C9

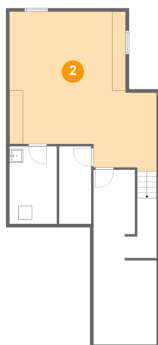
## 1 Floor 1 - Storage



Dimensions: 9'3" x 25'7"  
Area: 230 sq. ft  
Counted as living area: No

Heated: No  
Finished: No  
Enclosed: No  
Contiguous: Yes  
Permitted: Yes  
Wet space: No  
Addition: No  
Conversion: No

## 2 Floor 1 - Recreation Room

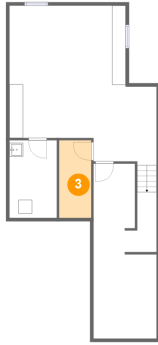


Dimensions: 21'6" x 22'9"  
Area: 396 sq. ft  
Counted as living area: No

Heated: Yes  
Finished: Yes  
Enclosed: Yes  
Contiguous: No  
Permitted: Yes  
Wet space: No  
Addition: No  
Conversion: No

908 Whiteford Way, Glen Cairn, Kanata, Ontario,  
Canada, K2M 0C9

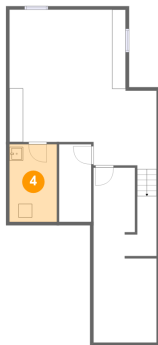
### 3 Floor 1 - Storage



Dimensions: 4'8" x 11'4"  
Area: 53 sq. ft  
Counted as living area: No

Heated: No  
Finished: No  
Enclosed: No  
Contiguous: Yes  
Permitted: Yes  
Wet space: No  
Addition: No  
Conversion: No

### 4 Floor 1 - Electrical Room



Dimensions: 6'11" x 11'4"  
Area: 79 sq. ft  
Counted as living area: No

Heated: No  
Finished: No  
Enclosed: Yes  
Contiguous: Yes  
Permitted: Yes  
Wet space: No  
Addition: No  
Conversion: No

### 5 Floor 2 - Dining Area



Dimensions: 11'0" x 13'0"  
Area: 141 sq. ft  
Counted as living area: Yes

Heated: Yes  
Finished: Yes  
Enclosed: Yes  
Contiguous: Yes  
Permitted: Yes  
Wet space: No  
Addition: No  
Conversion: No

908 Whiteford Way, Glen Cairn, Kanata, Ontario,  
Canada, K2M 0C9

## 6 Floor 2 - Hall



Dimensions: 7'5" x 11'3"  
Area: 115 sq. ft  
Counted as living area: Yes

Heated: Yes  
Finished: Yes  
Enclosed: Yes  
Contiguous: Yes  
Permitted: Yes  
Wet space: No  
Addition: No  
Conversion: No

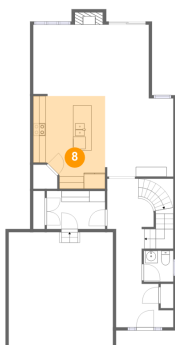
## 7 Floor 2 - WC



Dimensions: 4'9" x 5'0"  
Area: 24 sq. ft  
Counted as living area: Yes

Heated: Yes  
Finished: Yes  
Enclosed: Yes  
Contiguous: Yes  
Permitted: Yes  
Wet space: Yes  
Addition: No  
Conversion: No

## 8 Floor 2 - Kitchen



Dimensions: 11'7" x 14'11"  
Area: 157 sq. ft  
Counted as living area: Yes

Heated: Yes  
Finished: Yes  
Enclosed: Yes  
Contiguous: Yes  
Permitted: Yes  
Wet space: No  
Addition: No  
Conversion: No

908 Whiteford Way, Glen Cairn, Kanata, Ontario,  
Canada, K2M 0C9

### 9 Floor 2 - Hall



Dimensions: 9'5" x 6'1"  
Area: 58 sq. ft  
Counted as living area: Yes

Heated: Yes  
Finished: Yes  
Enclosed: Yes  
Contiguous: Yes  
Permitted: Yes  
Wet space: No  
Addition: No  
Conversion: No

### 10 Floor 2 - Living Room



Dimensions: 18'8" x 11'6"  
Area: 222 sq. ft  
Counted as living area: Yes

Heated: Yes  
Finished: Yes  
Enclosed: Yes  
Contiguous: Yes  
Permitted: Yes  
Wet space: No  
Addition: No  
Conversion: No

### 11 Floor 2 - Foyer



Dimensions: 9'3" x 12'8"  
Area: 78 sq. ft  
Counted as living area: Yes

Heated: Yes  
Finished: Yes  
Enclosed: Yes  
Contiguous: Yes  
Permitted: Yes  
Wet space: No  
Addition: No  
Conversion: No



908 Whiteford Way, Glen Cairn, Kanata, Ontario,  
Canada, K2M 0C9

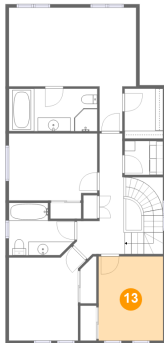
## 12 Floor 2 - Garage



Dimensions: 16'9" x 18'3"  
Area: 307 sq. ft  
Counted as living area: No

Heated: No  
Finished: No  
Enclosed: Yes  
Contiguous: Yes  
Permitted: Yes  
Wet space: No  
Addition: No  
Conversion: No

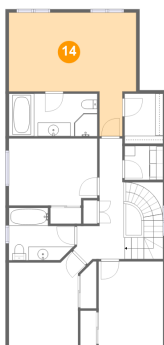
## 13 Floor 3 - Bedroom



Dimensions: 9'5" x 12'4"  
Area: 116 sq. ft  
Counted as living area: Yes

Heated: Yes  
Finished: Yes  
Enclosed: Yes  
Contiguous: Yes  
Permitted: Yes  
Wet space: No  
Addition: No  
Conversion: No

## 14 Floor 3 - Primary Bedroom



Dimensions: 18'8" x 18'0"  
Area: 236 sq. ft  
Counted as living area: Yes

Heated: Yes  
Finished: Yes  
Enclosed: Yes  
Contiguous: Yes  
Permitted: Yes  
Wet space: No  
Addition: No  
Conversion: No

908 Whiteford Way, Glen Cairn, Kanata, Ontario,  
Canada, K2M 0C9

**15** Floor 3 - Laundry



Dimensions: 5'8" x 4'11"  
Area: 28 sq. ft  
Counted as living area: Yes

Heated: Yes  
Finished: Yes  
Enclosed: Yes  
Contiguous: Yes  
Permitted: Yes  
Wet space: No  
Addition: No  
Conversion: No

**16** Floor 3 - Bedroom



Dimensions: 12'11" x 9'9"  
Area: 124 sq. ft  
Counted as living area: Yes

Heated: Yes  
Finished: Yes  
Enclosed: Yes  
Contiguous: Yes  
Permitted: Yes  
Wet space: No  
Addition: No  
Conversion: No

**17** Floor 3 - W.I.C.



Dimensions: 5'8" x 7'4"  
Area: 41 sq. ft  
Counted as living area: Yes

Heated: Yes  
Finished: Yes  
Enclosed: Yes  
Contiguous: Yes  
Permitted: Yes  
Wet space: No  
Addition: No  
Conversion: No

908 Whiteford Way, Glen Cairn, Kanata, Ontario,  
Canada, K2M 0C9

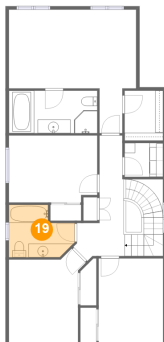
### 18 Floor 3 - Bedroom



Dimensions: 11'3" x 13'8"  
Area: 127 sq. ft  
Counted as living area: Yes

Heated: Yes  
Finished: Yes  
Enclosed: Yes  
Contiguous: Yes  
Permitted: Yes  
Wet space: No  
Addition: No  
Conversion: No

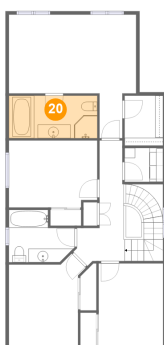
### 19 Floor 3 - Bath



Dimensions: 9'8" x 7'8"  
Area: 61 sq. ft  
Counted as living area: Yes

Heated: Yes  
Finished: Yes  
Enclosed: Yes  
Contiguous: Yes  
Permitted: Yes  
Wet space: Yes  
Addition: No  
Conversion: No

### 20 Floor 3 - Primary Bath

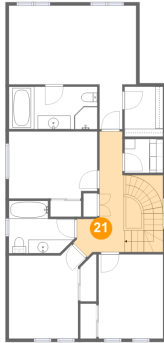


Dimensions: 12'11" x 6'2"  
Area: 80 sq. ft  
Counted as living area: Yes

Heated: Yes  
Finished: Yes  
Enclosed: Yes  
Contiguous: Yes  
Permitted: Yes  
Wet space: Yes  
Addition: No  
Conversion: No

908 Whiteford Way, Glen Cairn, Kanata, Ontario,  
Canada, K2M 0C9

**21** Floor 3 - Hall



Dimensions: 7'6" x 17'8"  
Area: 143 sq. ft  
Counted as living area: Yes

Heated: Yes  
Finished: Yes  
Enclosed: Yes  
Contiguous: Yes  
Permitted: Yes  
Wet space: No  
Addition: No  
Conversion: No