


## Home report

**5832 Salisbury Drive, Nottingham Heights, Cave Spring,  
Roanoke, Roanoke County, Virginia, United States, 24018**



## Property summary


 **1** Garages

 **4** Bedrooms

 **5** Bathrooms

 **0** Half baths

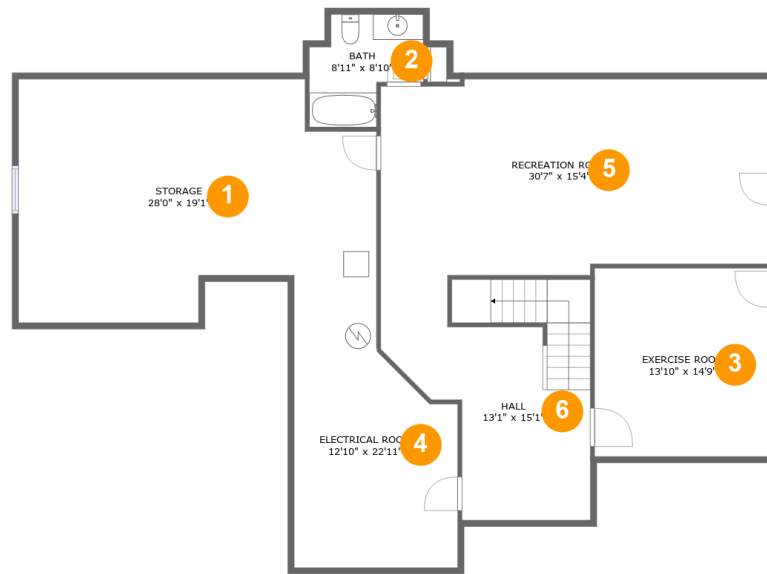
 **3** Floors

 **4,494**  
Gross living  
area sqft

 **6,510**  
Total sqft

Home report

5832 Salisbury Drive, Nottingham Heights, Cave Spring,  
Roanoke, Roanoke County, Virginia, United States, 24018



## Room dimensions

Floor 1

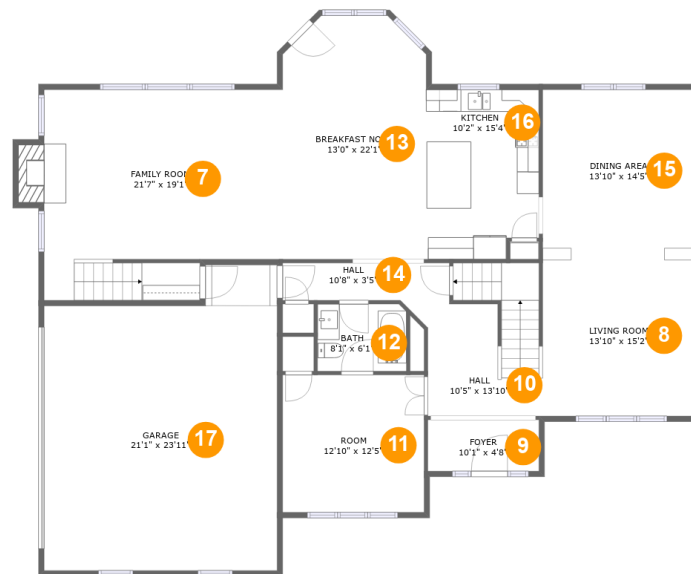
Total sqft: 1803

Living area: 833

#		Dimensions	sqft	Counted as living area
1	Storage	28'0" x 19'1"	460 sq. ft	No
2	Bath	8'11" x 8'10"	62 sq. ft	Yes
3	Exercise Room	13'10" x 14'9"	204 sq. ft	No
4	Electrical Room	12'10" x 22'11"	238 sq. ft	No
5	Recreation Room	30'7" x 15'4"	453 sq. ft	Yes
6	Hall	13'1" x 15'1"	239 sq. ft	Yes

## Home report

5832 Salisbury Drive, Nottingham Heights, Cave Spring,  
Roanoke, Roanoke County, Virginia, United States, 24018



## Room dimensions

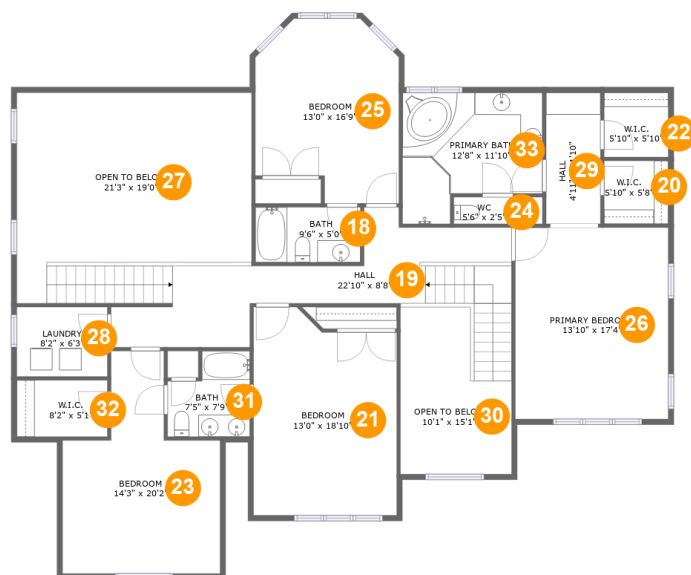
Floor 2

Total sqft: 2400 Living area: 1846

#		Dimensions	sqft	Counted as living area
7	Family Room	21'7" x 19'1"	393 sq. ft	Yes
8	Living Room	13'10" x 15'2"	210 sq. ft	Yes
9	Foyer	10'1" x 4'8"	47 sq. ft	Yes
10	Hall	10'5" x 13'10"	149 sq. ft	Yes
11	Room	12'10" x 12'5"	159 sq. ft	Yes
12	Bath	8'1" x 6'1"	49 sq. ft	Yes
13	Breakfast Nook	13'0" x 22'1"	274 sq. ft	Yes
14	Hall	10'8" x 3'5"	36 sq. ft	Yes
15	Dining Area	13'10" x 14'5"	199 sq. ft	Yes
16	Kitchen	10'2" x 15'4"	151 sq. ft	Yes
17	Garage	21'1" x 23'11"	529 sq. ft	No

## Home report

**5832 Salisbury Drive, Nottingham Heights, Cave Spring,  
Roanoke, Roanoke County, Virginia, United States, 24018**



## Room dimensions

Floor 3

Total sqft: 2307 Living area: 1815

#		Dimensions	sqft	Counted as living area
18	Bath	9'6" x 5'0"	47 sq. ft	Yes
19	Hall	22'10" x 8'8"	277 sq. ft	Yes
20	W.I.C.	5'10" x 5'8"	33 sq. ft	Yes
21	Bedroom	13'0" x 18'10"	226 sq. ft	Yes
22	W.I.C.	5'10" x 5'10"	34 sq. ft	Yes
23	Bedroom	14'3" x 20'2"	210 sq. ft	Yes
24	WC	5'6" x 2'5"	19 sq. ft	Yes
25	Bedroom	13'0" x 16'9"	189 sq. ft	Yes
26	Primary Bedroom	13'10" x 17'4"	240 sq. ft	Yes
27	Open To Below	21'3" x 19'0"	336 sq. ft	No
28	Laundry	8'2" x 6'3"	52 sq. ft	Yes

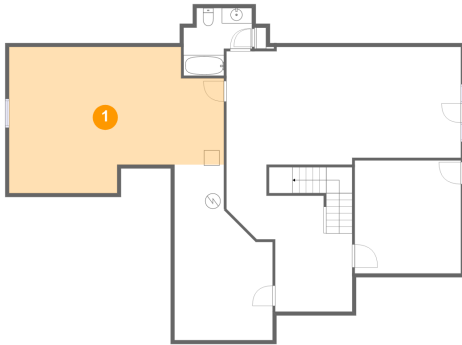
Home report

**5832 Salisbury Drive, Nottingham Heights, Cave Spring,  
Roanoke, Roanoke County, Virginia, United States, 24018**

#		Dimensions	sqft	Counted as living area
29	Hall	4'11" x 11'10"	58 sq. ft	Yes
30	Open To Below	10'1" x 15'1"	127 sq. ft	No
31	Bath	7'5" x 7'9"	49 sq. ft	Yes
32	W.I.C.	8'2" x 5'1"	42 sq. ft	Yes
33	Primary Bath	12'8" x 11'10"	127 sq. ft	Yes

5832 Salisbury Drive, Nottingham Heights, Cave Spring,  
Roanoke, Roanoke County, Virginia, United States, 24018

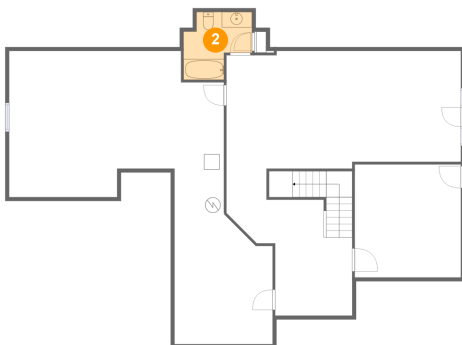
## 1 Floor 1 - Storage



Dimensions: 28'0" x 19'1"  
Area: 460 sq. ft  
Counted as living area: No

Heated: No  
Finished: No  
Enclosed: No  
Contiguous: Yes  
Permitted: Yes  
Wet space: No  
Addition: No  
Conversion: No

## 2 Floor 1 - Bath

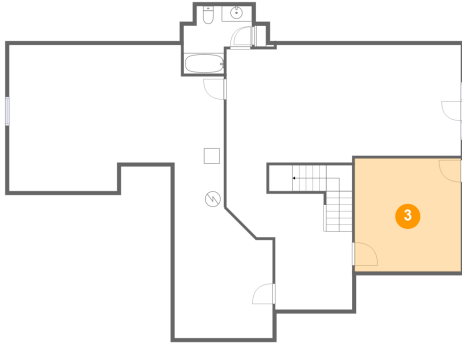


Dimensions: 8'11" x 8'10"  
Area: 62 sq. ft  
Counted as living area: Yes

Heated: Yes  
Finished: Yes  
Enclosed: Yes  
Contiguous: Yes  
Permitted: Yes  
Wet space: Yes  
Addition: No  
Conversion: No

5832 Salisbury Drive, Nottingham Heights, Cave Spring,  
Roanoke, Roanoke County, Virginia, United States, 24018

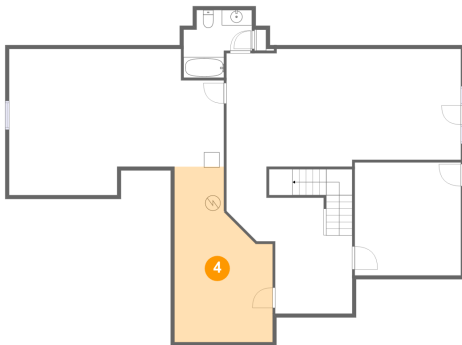
### 3 Floor 1 - Exercise Room



Dimensions: 13'10" x 14'9"  
Area: 204 sq. ft  
Counted as living area: No

Heated: No  
Finished: No  
Enclosed: Yes  
Contiguous: Yes  
Permitted: Yes  
Wet space: No  
Addition: No  
Conversion: No

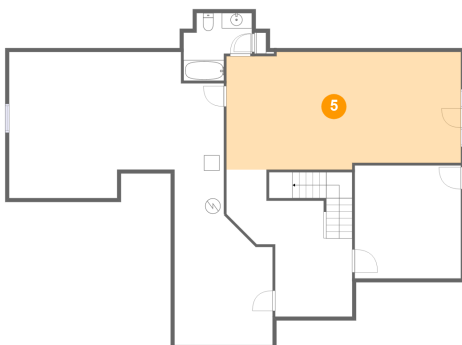
### 4 Floor 1 - Electrical Room



Dimensions: 12'10" x 22'11"  
Area: 238 sq. ft  
Counted as living area: No

Heated: No  
Finished: No  
Enclosed: Yes  
Contiguous: Yes  
Permitted: Yes  
Wet space: No  
Addition: No  
Conversion: No

### 5 Floor 1 - Recreation Room

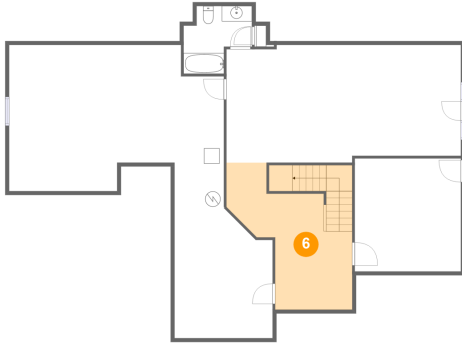


Dimensions: 30'7" x 15'4"  
Area: 453 sq. ft  
Counted as living area: Yes

Heated: Yes  
Finished: Yes  
Enclosed: Yes  
Contiguous: Yes  
Permitted: Yes  
Wet space: No  
Addition: No  
Conversion: No

5832 Salisbury Drive, Nottingham Heights, Cave Spring,  
Roanoke, Roanoke County, Virginia, United States, 24018

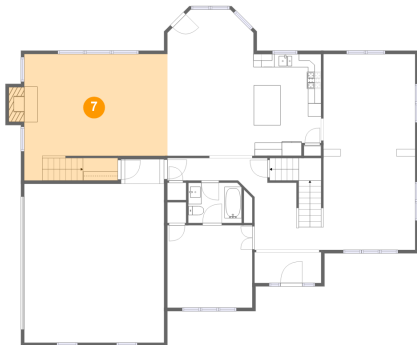
## 6 Floor 1 - Hall



Dimensions: 13'1" x 15'1"  
Area: 239 sq. ft  
Counted as living area: Yes

Heated: Yes  
Finished: Yes  
Enclosed: Yes  
Contiguous: Yes  
Permitted: Yes  
Wet space: No  
Addition: No  
Conversion: No

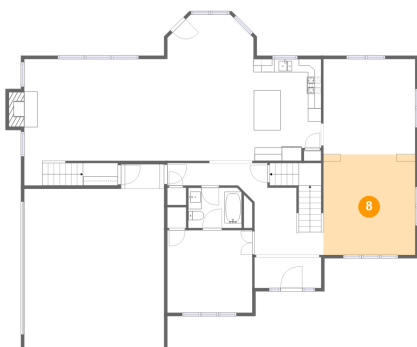
## 7 Floor 2 - Family Room



Dimensions: 21'7" x 19'1"  
Area: 393 sq. ft  
Counted as living area: Yes

Heated: Yes  
Finished: Yes  
Enclosed: Yes  
Contiguous: Yes  
Permitted: Yes  
Wet space: No  
Addition: No  
Conversion: No

## 8 Floor 2 - Living Room



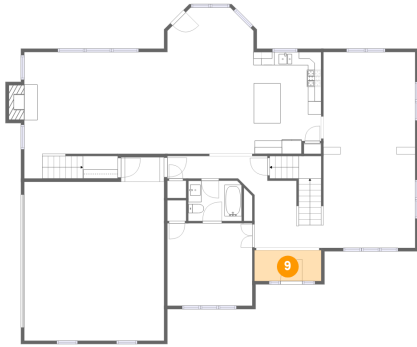
Dimensions: 13'10" x 15'2"  
Area: 210 sq. ft  
Counted as living area: Yes

Heated: Yes  
Finished: Yes  
Enclosed: Yes  
Contiguous: Yes  
Permitted: Yes  
Wet space: No  
Addition: No  
Conversion: No



5832 Salisbury Drive, Nottingham Heights, Cave Spring,  
Roanoke, Roanoke County, Virginia, United States, 24018

**9** Floor 2 - Foyer



Dimensions: 10'1" x 4'8"  
Area: 47 sq. ft  
Counted as living area: Yes

Heated: Yes  
Finished: Yes  
Enclosed: Yes  
Contiguous: Yes  
Permitted: Yes  
Wet space: No  
Addition: No  
Conversion: No

**10** Floor 2 - Hall



Dimensions: 10'5" x 13'10"  
Area: 149 sq. ft  
Counted as living area: Yes

Heated: Yes  
Finished: Yes  
Enclosed: Yes  
Contiguous: Yes  
Permitted: Yes  
Wet space: No  
Addition: No  
Conversion: No

**11** Floor 2 - Room



Dimensions: 12'10" x 12'5"  
Area: 159 sq. ft  
Counted as living area: Yes

Heated: Yes  
Finished: Yes  
Enclosed: Yes  
Contiguous: Yes  
Permitted: Yes  
Wet space: No  
Addition: No  
Conversion: No

5832 Salisbury Drive, Nottingham Heights, Cave Spring,  
Roanoke, Roanoke County, Virginia, United States, 24018

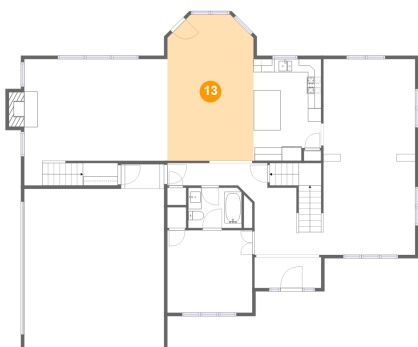
## 12 Floor 2 - Bath



Dimensions: 8'1" x 6'1"  
Area: 49 sq. ft  
Counted as living area: Yes

Heated: Yes  
Finished: Yes  
Enclosed: Yes  
Contiguous: Yes  
Permitted: Yes  
Wet space: Yes  
Addition: No  
Conversion: No

## 13 Floor 2 - Breakfast Nook



Dimensions: 13'0" x 22'1"  
Area: 274 sq. ft  
Counted as living area: Yes

Heated: Yes  
Finished: Yes  
Enclosed: Yes  
Contiguous: Yes  
Permitted: Yes  
Wet space: No  
Addition: No  
Conversion: No

## 14 Floor 2 - Hall



Dimensions: 10'8" x 3'5"  
Area: 36 sq. ft  
Counted as living area: Yes

Heated: Yes  
Finished: Yes  
Enclosed: Yes  
Contiguous: Yes  
Permitted: Yes  
Wet space: No  
Addition: No  
Conversion: No

5832 Salisbury Drive, Nottingham Heights, Cave Spring,  
Roanoke, Roanoke County, Virginia, United States, 24018

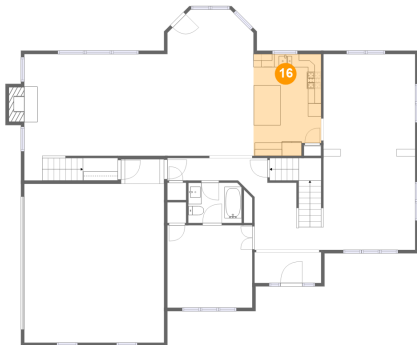
**15** Floor 2 - Dining Area



Dimensions: 13'10" x 14'5"  
Area: 199 sq. ft  
Counted as living area: Yes

Heated: Yes  
Finished: Yes  
Enclosed: Yes  
Contiguous: Yes  
Permitted: Yes  
Wet space: No  
Addition: No  
Conversion: No

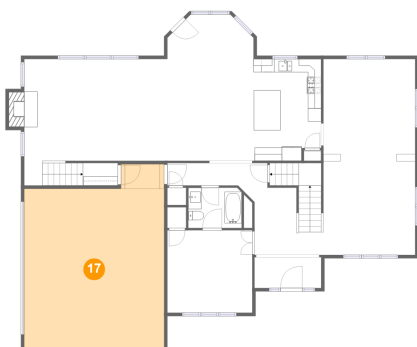
**16** Floor 2 - Kitchen



Dimensions: 10'2" x 15'4"  
Area: 151 sq. ft  
Counted as living area: Yes

Heated: Yes  
Finished: Yes  
Enclosed: Yes  
Contiguous: Yes  
Permitted: Yes  
Wet space: No  
Addition: No  
Conversion: No

**17** Floor 2 - Garage



Dimensions: 21'1" x 23'11"  
Area: 529 sq. ft  
Counted as living area: No

Heated: No  
Finished: No  
Enclosed: Yes  
Contiguous: Yes  
Permitted: Yes  
Wet space: No  
Addition: No  
Conversion: No

5832 Salisbury Drive, Nottingham Heights, Cave Spring,  
Roanoke, Roanoke County, Virginia, United States, 24018

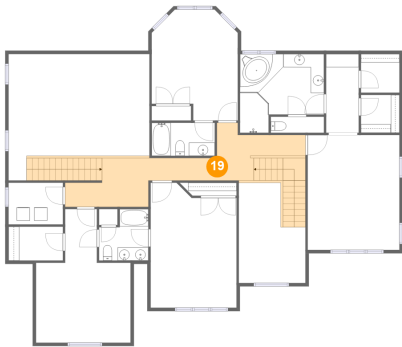
**18** Floor 3 - Bath



Dimensions: 9'6" x 5'0"  
Area: 47 sq. ft  
Counted as living area: Yes

Heated: Yes  
Finished: Yes  
Enclosed: Yes  
Contiguous: Yes  
Permitted: Yes  
Wet space: Yes  
Addition: No  
Conversion: No

**19** Floor 3 - Hall



Dimensions: 22'10" x 8'8"  
Area: 277 sq. ft  
Counted as living area: Yes

Heated: Yes  
Finished: Yes  
Enclosed: Yes  
Contiguous: Yes  
Permitted: Yes  
Wet space: No  
Addition: No  
Conversion: No

**20** Floor 3 - W.I.C.

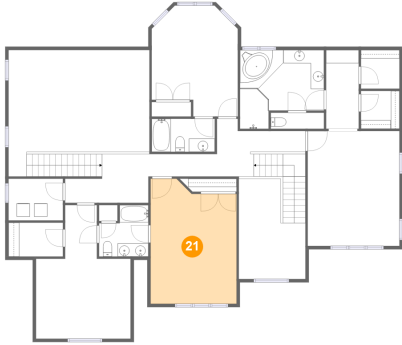


Dimensions: 5'10" x 5'8"  
Area: 33 sq. ft  
Counted as living area: Yes

Heated: Yes  
Finished: Yes  
Enclosed: Yes  
Contiguous: Yes  
Permitted: Yes  
Wet space: No  
Addition: No  
Conversion: No

5832 Salisbury Drive, Nottingham Heights, Cave Spring,  
Roanoke, Roanoke County, Virginia, United States, 24018

**21** Floor 3 - Bedroom



Dimensions: 13'0" x 18'10"  
Area: 226 sq. ft  
Counted as living area: Yes

Heated: Yes  
Finished: Yes  
Enclosed: Yes  
Contiguous: Yes  
Permitted: Yes  
Wet space: No  
Addition: No  
Conversion: No

**22** Floor 3 - W.I.C.



Dimensions: 5'10" x 5'10"  
Area: 34 sq. ft  
Counted as living area: Yes

Heated: Yes  
Finished: Yes  
Enclosed: Yes  
Contiguous: Yes  
Permitted: Yes  
Wet space: No  
Addition: No  
Conversion: No

**23** Floor 3 - Bedroom

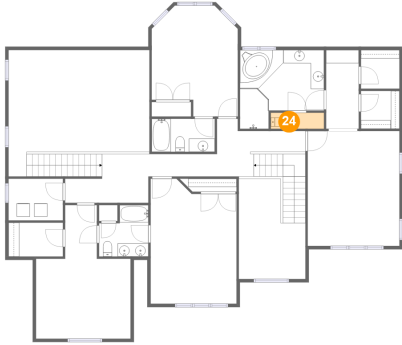


Dimensions: 14'3" x 20'2"  
Area: 210 sq. ft  
Counted as living area: Yes

Heated: Yes  
Finished: Yes  
Enclosed: Yes  
Contiguous: Yes  
Permitted: Yes  
Wet space: No  
Addition: No  
Conversion: No

5832 Salisbury Drive, Nottingham Heights, Cave Spring,  
Roanoke, Roanoke County, Virginia, United States, 24018

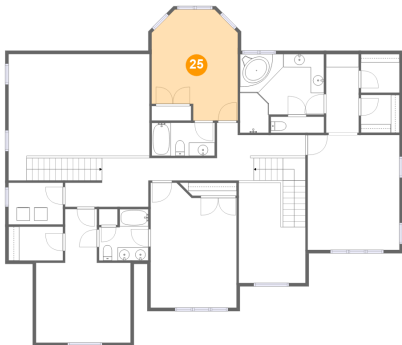
**24** Floor 3 - WC



Dimensions: 5'6" x 2'5"  
Area: 19 sq. ft  
Counted as living area: Yes

Heated: Yes  
Finished: Yes  
Enclosed: Yes  
Contiguous: Yes  
Permitted: Yes  
Wet space: Yes  
Addition: No  
Conversion: No

**25** Floor 3 - Bedroom



Dimensions: 13'0" x 16'9"  
Area: 189 sq. ft  
Counted as living area: Yes

Heated: Yes  
Finished: Yes  
Enclosed: Yes  
Contiguous: Yes  
Permitted: Yes  
Wet space: No  
Addition: No  
Conversion: No

**26** Floor 3 - Primary Bedroom



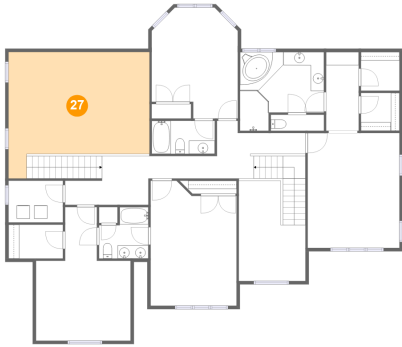
Dimensions: 13'10" x 17'4"  
Area: 240 sq. ft  
Counted as living area: Yes

Heated: Yes  
Finished: Yes  
Enclosed: Yes  
Contiguous: Yes  
Permitted: Yes  
Wet space: No  
Addition: No  
Conversion: No

5832 Salisbury Drive, Nottingham Heights, Cave Spring,  
Roanoke, Roanoke County, Virginia, United States, 24018

**27** Floor 3 - Open To Below

---



Dimensions: 21'3" x 19'0"  
Area: 336 sq. ft  
Counted as living area: No

Heated: No  
Finished: No  
Enclosed: No  
Contiguous: Yes  
Permitted: No  
Wet space: No  
Addition: No  
Conversion: No

**28** Floor 3 - Laundry

---



Dimensions: 8'2" x 6'3"  
Area: 52 sq. ft  
Counted as living area: Yes

Heated: Yes  
Finished: Yes  
Enclosed: Yes  
Contiguous: Yes  
Permitted: Yes  
Wet space: No  
Addition: No  
Conversion: No

**29** Floor 3 - Hall

---

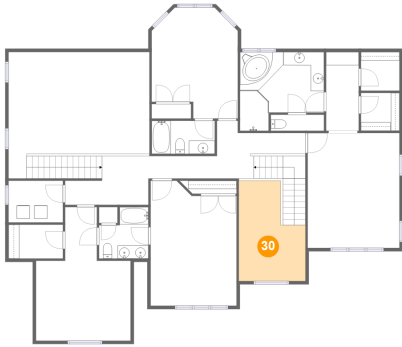


Dimensions: 4'11" x 11'10"  
Area: 58 sq. ft  
Counted as living area: Yes

Heated: Yes  
Finished: Yes  
Enclosed: Yes  
Contiguous: Yes  
Permitted: Yes  
Wet space: No  
Addition: No  
Conversion: No

5832 Salisbury Drive, Nottingham Heights, Cave Spring,  
Roanoke, Roanoke County, Virginia, United States, 24018

**30** Floor 3 - Open To Below



Dimensions: 10'1" x 15'1"  
Area: 127 sq. ft  
Counted as living area: No

Heated: No  
Finished: No  
Enclosed: No  
Contiguous: Yes  
Permitted: No  
Wet space: No  
Addition: No  
Conversion: No

**31** Floor 3 - Bath



Dimensions: 7'5" x 7'9"  
Area: 49 sq. ft  
Counted as living area: Yes

Heated: Yes  
Finished: Yes  
Enclosed: Yes  
Contiguous: Yes  
Permitted: Yes  
Wet space: Yes  
Addition: No  
Conversion: No

**32** Floor 3 - W.I.C.



Dimensions: 8'2" x 5'1"  
Area: 42 sq. ft  
Counted as living area: Yes

Heated: Yes  
Finished: Yes  
Enclosed: Yes  
Contiguous: Yes  
Permitted: Yes  
Wet space: No  
Addition: No  
Conversion: No

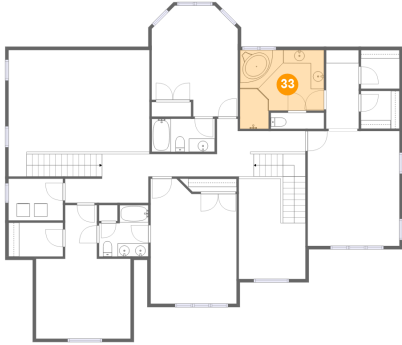


Home report

5832 Salisbury Drive, Nottingham Heights, Cave Spring,  
Roanoke, Roanoke County, Virginia, United States, 24018

**33** Floor 3 - Primary Bath

---



Dimensions: 12'8" x 11'10"  
Area: 127 sq. ft  
Counted as living area: Yes

Heated: Yes  
Finished: Yes  
Enclosed: Yes  
Contiguous: Yes  
Permitted: Yes  
Wet space: Yes  
Addition: No  
Conversion: No