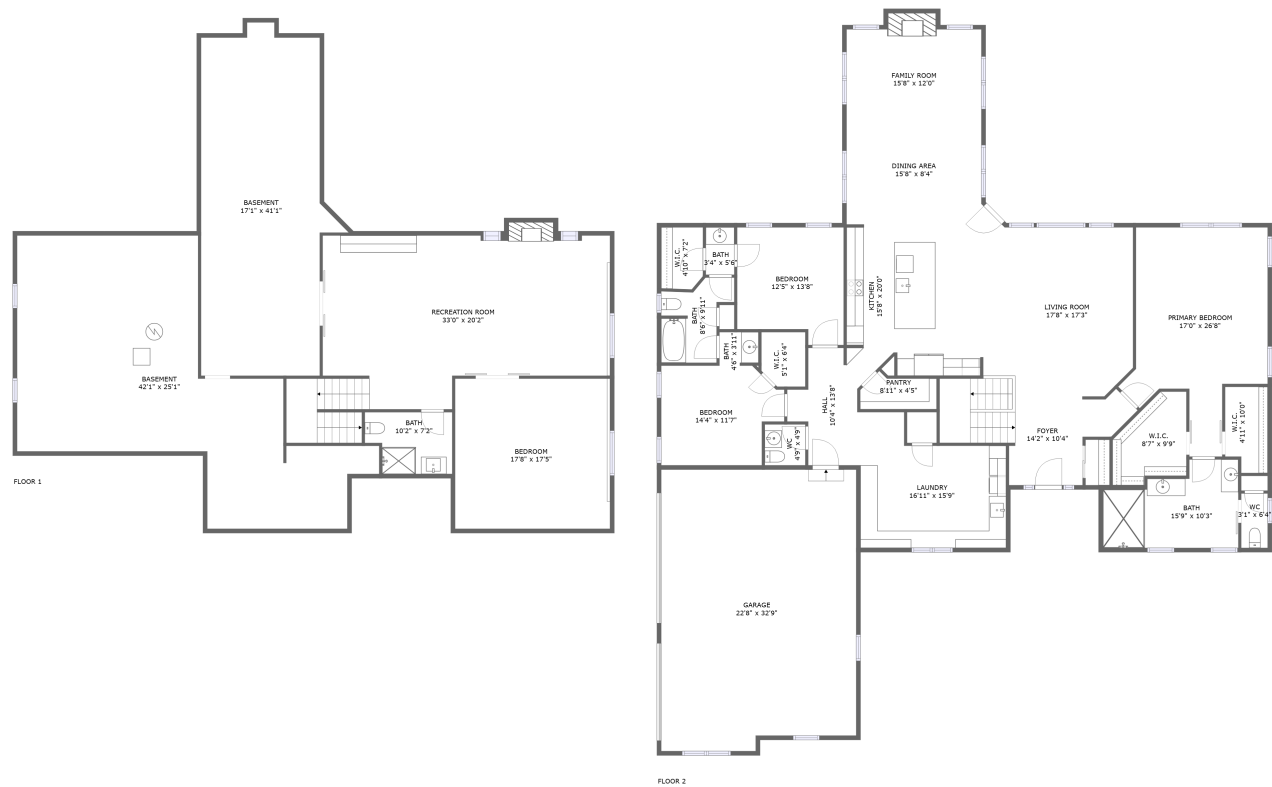





1061 Timber Stone Way, Richfield, Wisconsin 53033,
United States





Property summary


 **1** Garages


 **4** Bedrooms

 **3** Bathrooms

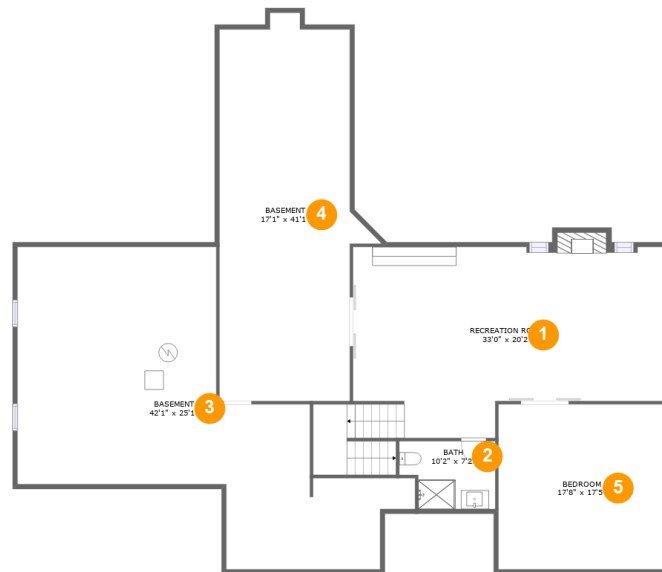
 **1** Half baths

 **2** Floors

 **3,937** Gross living area sqft

 **6,145** Total sqft

1061 Timber Stone Way, Richfield, Wisconsin 53033,
United States



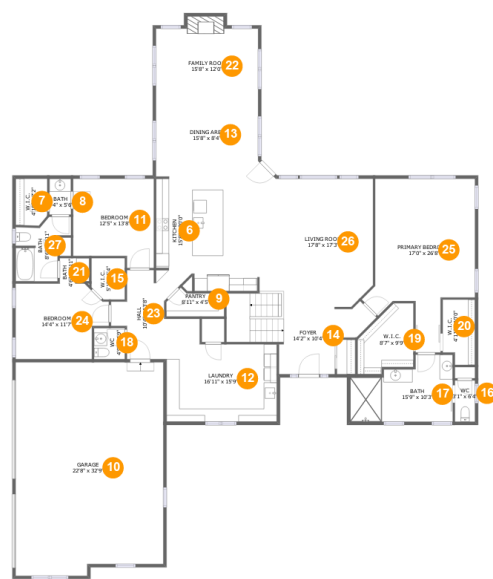
Room dimensions

Floor 1

Total sqft: 2546 Living area: 1112

#		Dimensions	sqft	Counted as living area
1	Recreation Room	33'0" x 20'2"	654 sq. ft	Yes
2	Bath	10'2" x 7'2"	66 sq. ft	Yes
3	Basement	42'1" x 25'1"	775 sq. ft	No
4	Basement	17'1" x 41'1"	554 sq. ft	No
5	Bedroom	17'8" x 17'5"	314 sq. ft	Yes

1061 Timber Stone Way, Richfield, Wisconsin 53033,
United States



Room dimensions

Floor 2

Total sqft: 3599 Living area: 2825

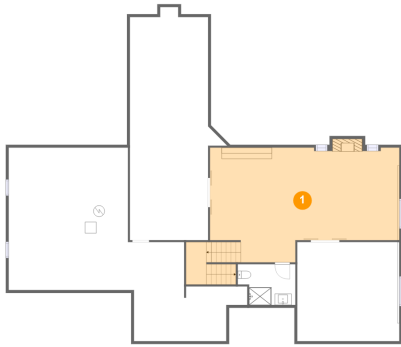
#		Dimensions	sqft	Counted as living area
6	Kitchen	15'8" x 20'0"	292 sq. ft	Yes
7	W.I.C.	4'10" x 7'2"	34 sq. ft	Yes
8	Bath	3'4" x 5'6"	18 sq. ft	Yes
9	Pantry	8'11" x 4'5"	32 sq. ft	Yes
10	Garage	22'8" x 32'9"	721 sq. ft	No
11	Bedroom	12'5" x 13'8"	154 sq. ft	Yes
12	Laundry	16'11" x 15'9"	221 sq. ft	Yes
13	Dining Area	15'8" x 8'4"	130 sq. ft	Yes
14	Foyer	14'2" x 10'4"	156 sq. ft	Yes
15	W.I.C.	5'1" x 6'4"	31 sq. ft	Yes
16	WC	3'1" x 6'4"	19 sq. ft	Yes

**1061 Timber Stone Way, Richfield, Wisconsin 53033,
United States**

#		Dimensions	sqft	Counted as living area
17	Bath	15'9" x 10'3"	133 sq. ft	Yes
18	WC	4'9" x 4'9"	22 sq. ft	Yes
19	W.I.C.	8'7" x 9'9"	73 sq. ft	Yes
20	W.I.C.	4'11" x 10'0"	46 sq. ft	Yes
21	Bath	4'6" x 3'11"	17 sq. ft	Yes
22	Family Room	15'8" x 12'0"	198 sq. ft	Yes
23	Hall	10'4" x 13'8"	100 sq. ft	Yes
24	Bedroom	14'4" x 11'7"	146 sq. ft	Yes
25	Primary Bedroom	17'0" x 26'8"	322 sq. ft	Yes
26	Living Room	17'8" x 17'3"	354 sq. ft	Yes
27	Bath	8'6" x 9'11"	61 sq. ft	Yes

1061 Timber Stone Way, Richfield, Wisconsin 53033,
United States

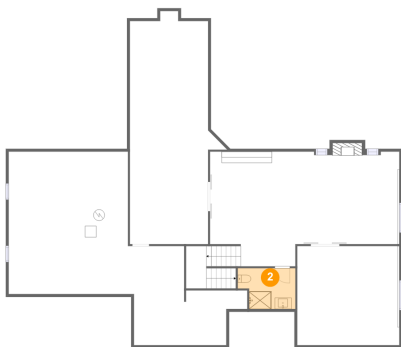
1 Floor 1 - Recreation Room



Dimensions: 33'0" x 20'2"
Area: 654 sq. ft
Counted as living area: Yes

Heated: Yes
Finished: Yes
Enclosed: Yes
Contiguous: Yes
Permitted: Yes
Wet space: No
Addition: No
Conversion: No

2 Floor 1 - Bath

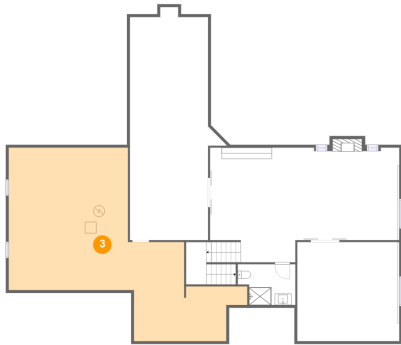


Dimensions: 10'2" x 7'2"
Area: 66 sq. ft
Counted as living area: Yes

Heated: Yes
Finished: Yes
Enclosed: Yes
Contiguous: Yes
Permitted: Yes
Wet space: Yes
Addition: No
Conversion: No

1061 Timber Stone Way, Richfield, Wisconsin 53033,
United States

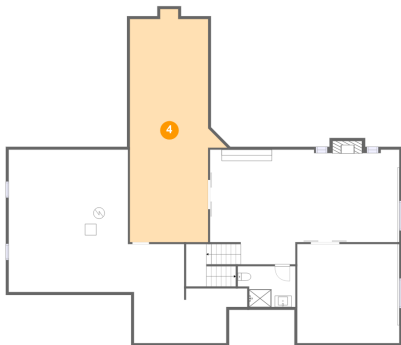
3 Floor 1 - Basement



Dimensions: 42'1" x 25'1"
Area: 775 sq. ft
Counted as living area: No

Heated: Yes
Finished: No
Enclosed: Yes
Contiguous: Yes
Permitted: Yes
Wet space: No
Addition: No
Conversion: No

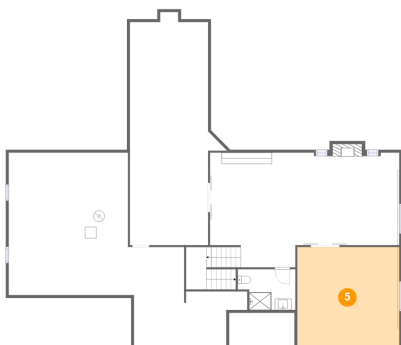
4 Floor 1 - Basement



Dimensions: 17'1" x 41'1"
Area: 554 sq. ft
Counted as living area: No

Heated: Yes
Finished: No
Enclosed: Yes
Contiguous: Yes
Permitted: Yes
Wet space: No
Addition: No
Conversion: No

5 Floor 1 - Bedroom

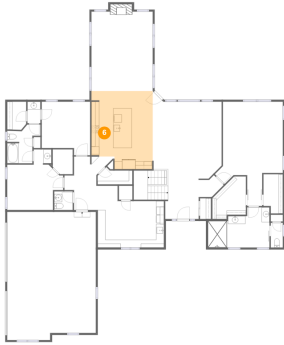


Dimensions: 17'8" x 17'5"
Area: 314 sq. ft
Counted as living area: Yes

Heated: Yes
Finished: Yes
Enclosed: Yes
Contiguous: Yes
Permitted: Yes
Wet space: No
Addition: No
Conversion: No

1061 Timber Stone Way, Richfield, Wisconsin 53033,
United States

6 Floor 2 - Kitchen



Dimensions: 15'8" x 20'0"
Area: 292 sq. ft
Counted as living area: Yes

Heated: Yes
Finished: Yes
Enclosed: Yes
Contiguous: Yes
Permitted: Yes
Wet space: No
Addition: No
Conversion: No

7 Floor 2 - W.I.C.



Dimensions: 4'10" x 7'2"
Area: 34 sq. ft
Counted as living area: Yes

Heated: Yes
Finished: Yes
Enclosed: Yes
Contiguous: Yes
Permitted: Yes
Wet space: No
Addition: No
Conversion: No

8 Floor 2 - Bath



Dimensions: 3'4" x 5'6"
Area: 18 sq. ft
Counted as living area: Yes

Heated: Yes
Finished: Yes
Enclosed: Yes
Contiguous: Yes
Permitted: Yes
Wet space: Yes
Addition: No
Conversion: No

1061 Timber Stone Way, Richfield, Wisconsin 53033,
United States

9 Floor 2 - Pantry



Dimensions: 8'11" x 4'5"
Area: 32 sq. ft
Counted as living area: Yes

Heated: Yes
Finished: Yes
Enclosed: Yes
Contiguous: Yes
Permitted: Yes
Wet space: No
Addition: No
Conversion: No

10 Floor 2 - Garage



Dimensions: 22'8" x 32'9"
Area: 721 sq. ft
Counted as living area: No

Heated: No
Finished: No
Enclosed: Yes
Contiguous: Yes
Permitted: Yes
Wet space: No
Addition: No
Conversion: No

11 Floor 2 - Bedroom



Dimensions: 12'5" x 13'8"
Area: 154 sq. ft
Counted as living area: Yes

Heated: Yes
Finished: Yes
Enclosed: Yes
Contiguous: Yes
Permitted: Yes
Wet space: No
Addition: No
Conversion: No

1061 Timber Stone Way, Richfield, Wisconsin 53033,
United States

12 Floor 2 - Laundry



Dimensions: 16'11" x 15'9"
Area: 221 sq. ft
Counted as living area: Yes

Heated: Yes
Finished: Yes
Enclosed: Yes
Contiguous: Yes
Permitted: Yes
Wet space: No
Addition: No
Conversion: No

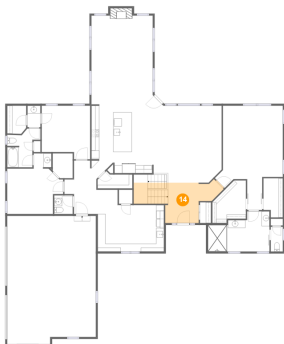
13 Floor 2 - Dining Area



Dimensions: 15'8" x 8'4"
Area: 130 sq. ft
Counted as living area: Yes

Heated: Yes
Finished: Yes
Enclosed: Yes
Contiguous: Yes
Permitted: Yes
Wet space: No
Addition: No
Conversion: No

14 Floor 2 - Foyer



Dimensions: 14'2" x 10'4"
Area: 156 sq. ft
Counted as living area: Yes

Heated: Yes
Finished: Yes
Enclosed: Yes
Contiguous: Yes
Permitted: Yes
Wet space: No
Addition: No
Conversion: No

1061 Timber Stone Way, Richfield, Wisconsin 53033,
United States

15 Floor 2 - W.I.C.



Dimensions: 5'1" x 6'4"
Area: 31 sq. ft
Counted as living area: Yes

Heated: Yes
Finished: Yes
Enclosed: Yes
Contiguous: Yes
Permitted: Yes
Wet space: No
Addition: No
Conversion: No

16 Floor 2 - WC



Dimensions: 3'1" x 6'4"
Area: 19 sq. ft
Counted as living area: Yes

Heated: Yes
Finished: Yes
Enclosed: Yes
Contiguous: Yes
Permitted: Yes
Wet space: No
Addition: No
Conversion: No

17 Floor 2 - Bath



Dimensions: 15'9" x 10'3"
Area: 133 sq. ft
Counted as living area: Yes

Heated: Yes
Finished: Yes
Enclosed: Yes
Contiguous: Yes
Permitted: Yes
Wet space: Yes
Addition: No
Conversion: No

1061 Timber Stone Way, Richfield, Wisconsin 53033,
United States

18 Floor 2 - WC



Dimensions: 4'9" x 4'9"
Area: 22 sq. ft
Counted as living area: Yes

Heated: Yes
Finished: Yes
Enclosed: Yes
Contiguous: Yes
Permitted: Yes
Wet space: Yes
Addition: No
Conversion: No

19 Floor 2 - W.I.C.



Dimensions: 8'7" x 9'9"
Area: 73 sq. ft
Counted as living area: Yes

Heated: Yes
Finished: Yes
Enclosed: Yes
Contiguous: Yes
Permitted: Yes
Wet space: No
Addition: No
Conversion: No

20 Floor 2 - W.I.C.



Dimensions: 4'11" x 10'0"
Area: 46 sq. ft
Counted as living area: Yes

Heated: Yes
Finished: Yes
Enclosed: Yes
Contiguous: Yes
Permitted: Yes
Wet space: No
Addition: No
Conversion: No

1061 Timber Stone Way, Richfield, Wisconsin 53033,
United States

21 Floor 2 - Bath



Dimensions: 4'6" x 3'11"
Area: 17 sq. ft
Counted as living area: Yes

Heated: Yes
Finished: Yes
Enclosed: Yes
Contiguous: Yes
Permitted: Yes
Wet space: Yes
Addition: No
Conversion: No

22 Floor 2 - Family Room



Dimensions: 15'8" x 12'0"
Area: 198 sq. ft
Counted as living area: Yes

Heated: Yes
Finished: Yes
Enclosed: Yes
Contiguous: Yes
Permitted: Yes
Wet space: No
Addition: No
Conversion: No

23 Floor 2 - Hall



Dimensions: 10'4" x 13'8"
Area: 100 sq. ft
Counted as living area: Yes

Heated: Yes
Finished: Yes
Enclosed: Yes
Contiguous: Yes
Permitted: Yes
Wet space: No
Addition: No
Conversion: No

1061 Timber Stone Way, Richfield, Wisconsin 53033,
United States

24 Floor 2 - Bedroom



Dimensions: 14'4" x 11'7"
Area: 146 sq. ft
Counted as living area: Yes

Heated: Yes
Finished: Yes
Enclosed: Yes
Contiguous: Yes
Permitted: Yes
Wet space: No
Addition: No
Conversion: No

25 Floor 2 - Primary Bedroom



Dimensions: 17'0" x 26'8"
Area: 322 sq. ft
Counted as living area: Yes

Heated: Yes
Finished: Yes
Enclosed: Yes
Contiguous: Yes
Permitted: Yes
Wet space: No
Addition: No
Conversion: No

26 Floor 2 - Living Room



Dimensions: 17'8" x 17'3"
Area: 354 sq. ft
Counted as living area: Yes

Heated: Yes
Finished: Yes
Enclosed: Yes
Contiguous: Yes
Permitted: Yes
Wet space: No
Addition: No
Conversion: No

**1061 Timber Stone Way, Richfield, Wisconsin 53033,
United States**

27 Floor 2 - Bath



Dimensions: 8'6" x 9'11"

Area: 61 sq. ft

Counted as living area: Yes

Heated: Yes

Finished: Yes

Enclosed: Yes

Contiguous: Yes

Permitted: Yes

Wet space: Yes

Addition: No

Conversion: No