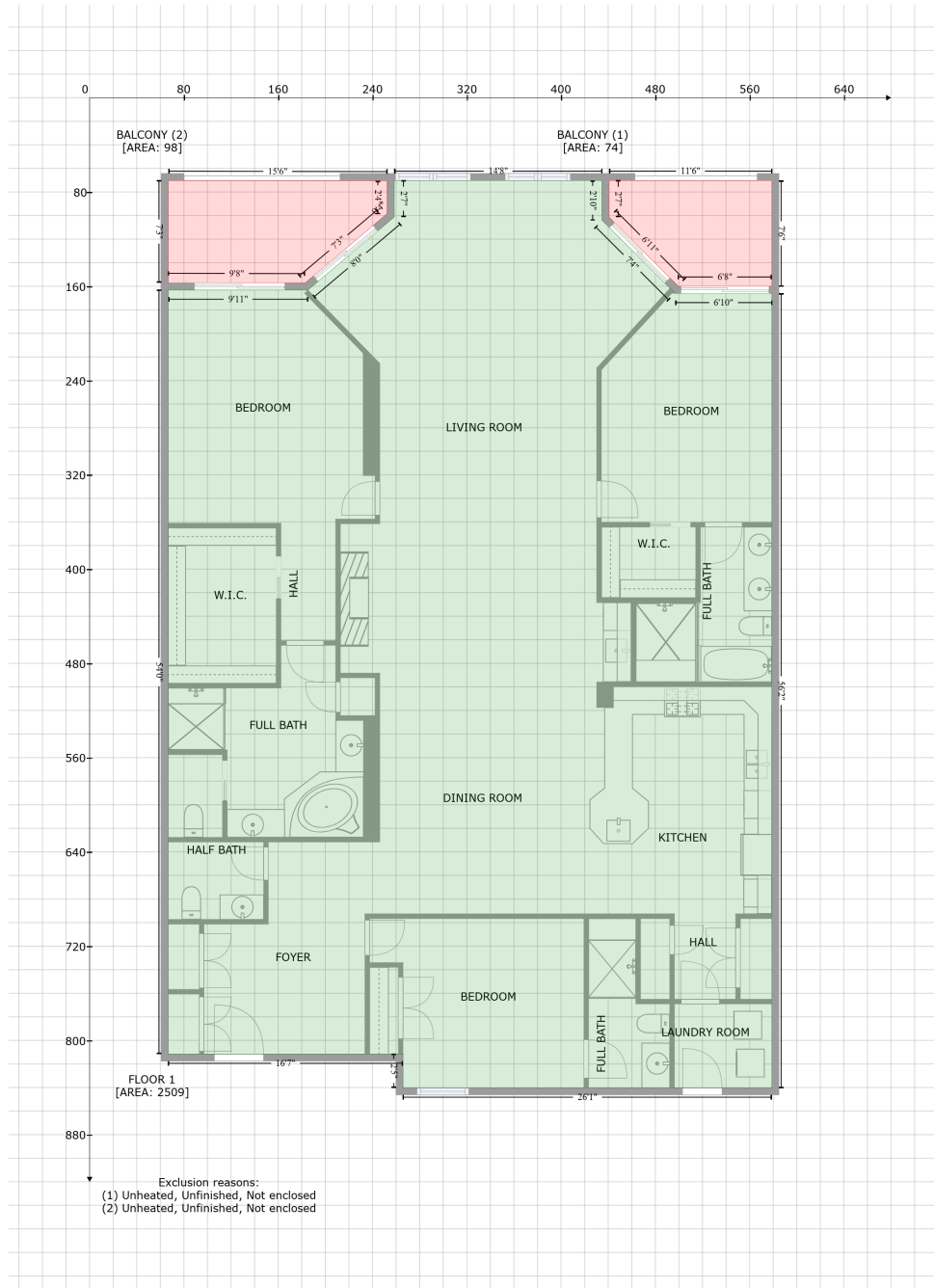


9547 Edgerton Drive, Myrtle Beach, Horry County, South Carolina, United States, 29572, 705

Gross Living Area: 2509 sq. ft



Space	Area (sq. ft)	Calculation <small>Coordinate Polygon Area Algorithm using inches</small>
FLOOR 1 (Living area)	2509	$-\left((434.7 + 434.7) * (70.2 - 103.8) + (434.7 + 496.9) * (103.8 - 166) + (496.9 + 578.9) * (166 - 166) + (578.9 + 578.9) * (166 - 840.3) + (578.9 + 265.9) * (840.3 - 840.3) + (265.9 + 265.9) * (840.3 - 811.6) + (265.9 + 66.7) * (811.6 - 811.6) + (66.7 + 66.7) * (811.6 - 163.1) + (66.7 + 185.2) * (163.1 - 163.1) + (185.2 + 258.4) * (163.1 - 101.2) + (258.4 + 258.4) * (101.2 - 70.2) + (258.4 + 434.7) * (70.2 - 70.2)\right) * 0.5 + 0.00694$
BALCONY	74	$-\left((578.9 + 578.9) * (70.2 - 160) + (578.9 + 499.4) * (160 - 160) + (499.4 + 440.7) * (160 - 101.3) + \dots\right)$

9547 Edgerton Drive, Myrtle Beach, Horry County, South Carolina, United States, 29572, 705

Gross Living Area: 2509 sq. ft

Space	Area (sq. ft)	Calculation <small>Coordinate Polygon Area Algorithm using inches</small>
(Non-living area)		$(440.7 + 440.7) * (101.3 - 70.2) + (440.7 + 578.9) * (70.2 - 70.2) * 0.5 * 0.00694$
BALCONY	98	$-((66.7 + 252.4) * (70.2 - 70.6) + (252.4 + 252.4) * (70.6 - 98.4) + (252.4 + 249.1) * (98.4 - 101.2) + (249.1 + 183) * (101.2 - 157.1) + (183 + 66.7) * (157.1 - 156.9) + (66.7 + 66.7) * (156.9 - 70.2)) * 0.5 * 0.00694$
(Non-living area)		