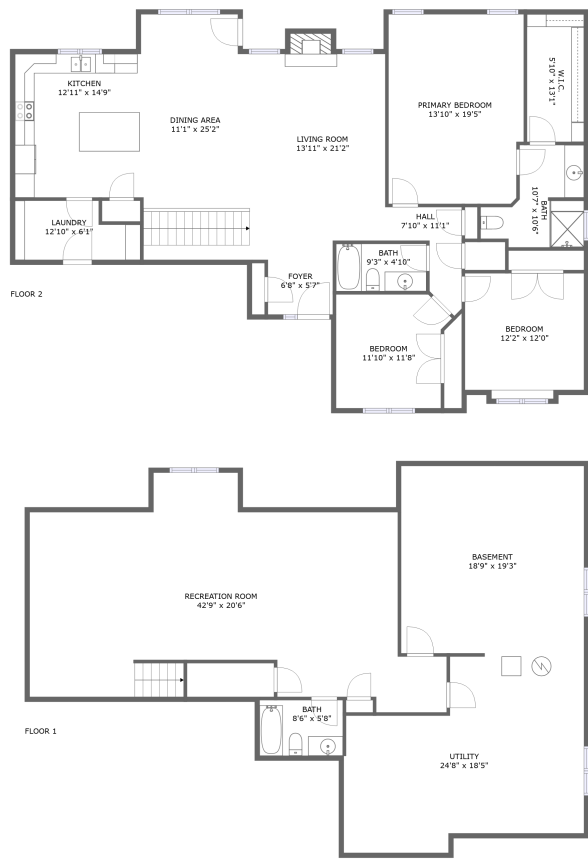



Home report


1862 Golden Lark Trail ,Cheyenne,WY,US




Property summary




0
Garages



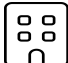
3
Bedrooms




3
Bathrooms




0
Half baths



2
Floors



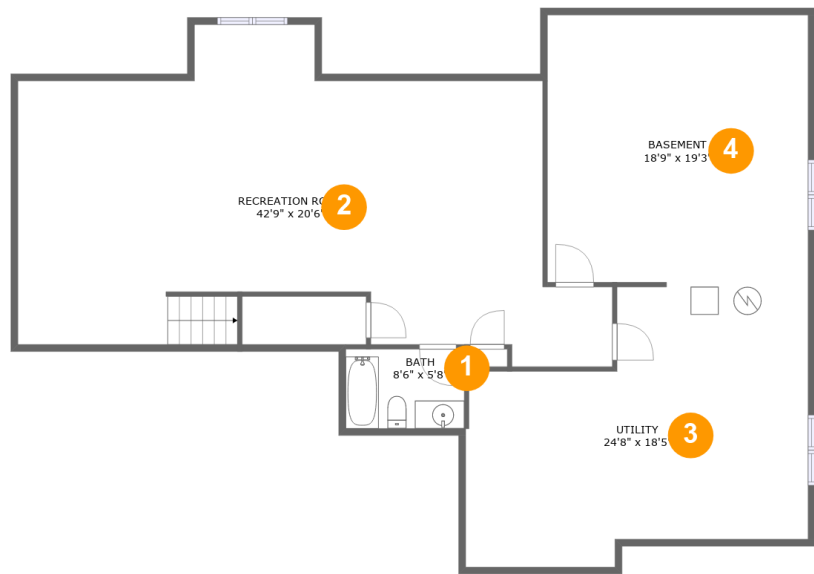
2,784
Gross living
area sqft



3,611
Total sqft

Home report

1862 Golden Lark Trail ,Cheyenne,WY,US



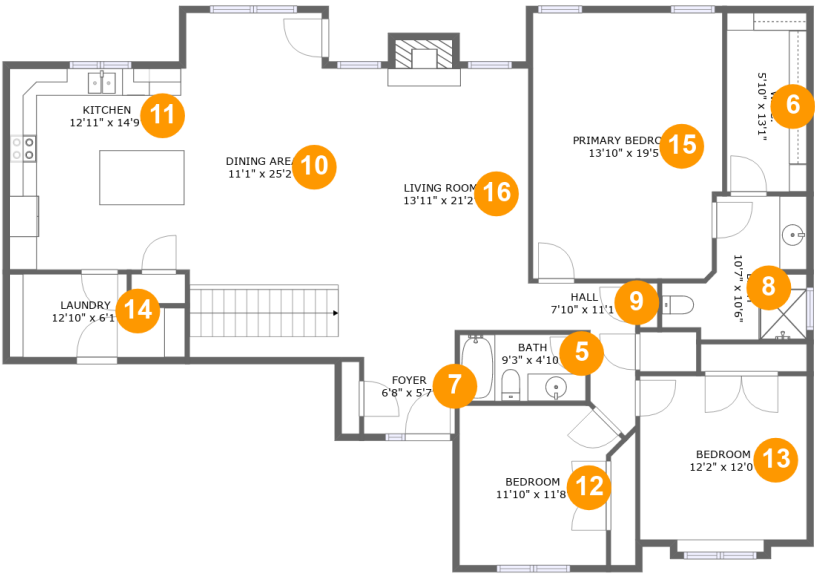
Room dimensions

Floor 1 Total sqft: 1722 Living area: 906

#		Dimensions	sqft	Counted as living area
1	Bath	8'6" x 5'8"	49 sq. ft	Yes
2	Recreation Room	42'9" x 20'6"	745 sq. ft	Yes
3	Utility	24'8" x 18'5"	405 sq. ft	No
4	Basement	18'9" x 19'3"	361 sq. ft	No

Home report

1862 Golden Lark Trail ,Cheyenne,WY,US



Room dimensions

Floor 2 Total sqft: 1889 Living area: 1878

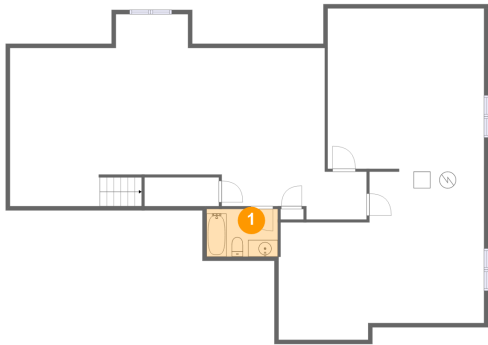
#		Dimensions	sqft	Counted as living area
5	Bath	9'3" x 4'10"	45 sq. ft	Yes
6	W.I.C.	5'10" x 13'1"	76 sq. ft	Yes
7	Foyer	6'8" x 5'7"	37 sq. ft	Yes
8	Bath	10'7" x 10'6"	82 sq. ft	Yes
9	Hall	7'10" x 11'1"	49 sq. ft	Yes
10	Dining Area	11'1" x 25'2"	274 sq. ft	Yes
11	Kitchen	12'11" x 14'9"	190 sq. ft	Yes
12	Bedroom	11'10" x 11'8"	126 sq. ft	Yes
13	Bedroom	12'2" x 12'0"	152 sq. ft	Yes
14	Laundry	12'10" x 6'1"	68 sq. ft	Yes
15	Primary Bedroom	13'10" x 19'5"	265 sq. ft	Yes

Home report

1862 Golden Lark Trail ,Cheyenne,WY,US

#		Dimensions	sqft	Counted as living area
16	Living Room	13'11" x 21'2"	292 sq. ft	Yes

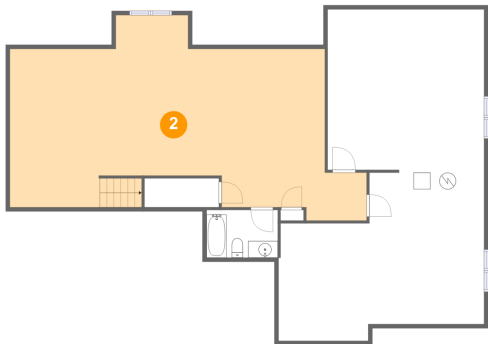
1 Floor 1 - Bath



Dimensions: 8'6" x 5'8"
Area: 49 sq. ft
Counted as living area: Yes

Heated: Yes
Finished: Yes
Enclosed: Yes
Contiguous: Yes
Permitted: Yes
Wet space: Yes
Addition: No
Conversion: No

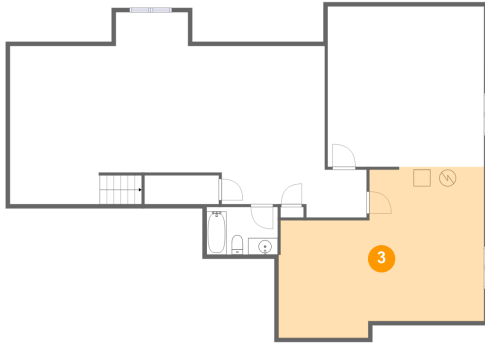
2 Floor 1 - Recreation Room



Dimensions: 42'9" x 20'6"
Area: 745 sq. ft
Counted as living area: Yes

Heated: Yes
Finished: Yes
Enclosed: Yes
Contiguous: Yes
Permitted: Yes
Wet space: No
Addition: No
Conversion: No

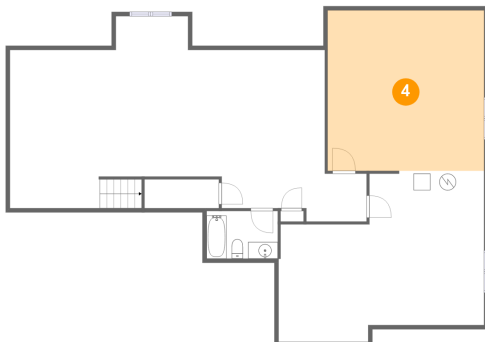
3 Floor 1 - Utility



Dimensions: 24'8" x 18'5"
Area: 405 sq. ft
Counted as living area: No

Heated: Yes
Finished: No
Enclosed: Yes
Contiguous: Yes
Permitted: Yes
Wet space: No
Addition: No
Conversion: No

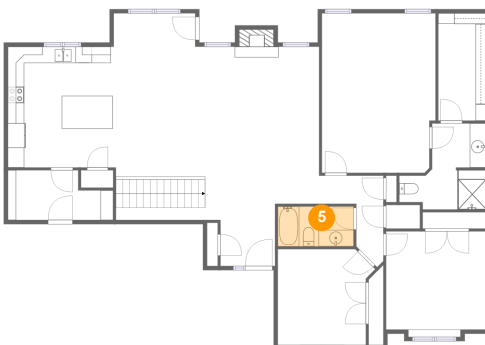
4 Floor 1 - Basement



Dimensions: 18'9" x 19'3"
Area: 361 sq. ft
Counted as living area: No

Heated: Yes
Finished: No
Enclosed: Yes
Contiguous: Yes
Permitted: Yes
Wet space: No
Addition: No
Conversion: No

5 Floor 2 - Bath



Dimensions: 9'3" x 4'10"
Area: 45 sq. ft
Counted as living area: Yes

Heated: Yes
Finished: Yes
Enclosed: Yes
Contiguous: Yes
Permitted: Yes
Wet space: Yes
Addition: No
Conversion: No

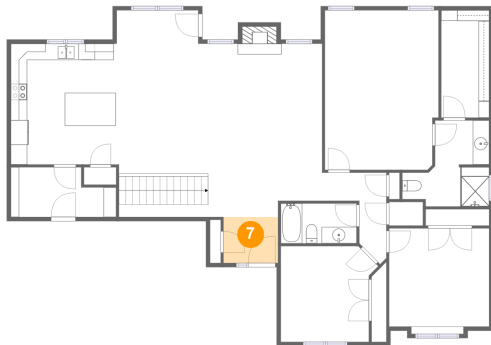
6 Floor 2 - W.I.C.



Dimensions: 5'10" x 13'1"
Area: 76 sq. ft
Counted as living area: Yes

Heated: Yes
Finished: Yes
Enclosed: Yes
Contiguous: Yes
Permitted: Yes
Wet space: No
Addition: No
Conversion: No

7 Floor 2 - Foyer



Dimensions: 6'8" x 5'7"
Area: 37 sq. ft
Counted as living area: Yes

Heated: Yes
Finished: Yes
Enclosed: Yes
Contiguous: Yes
Permitted: Yes
Wet space: No
Addition: No
Conversion: No

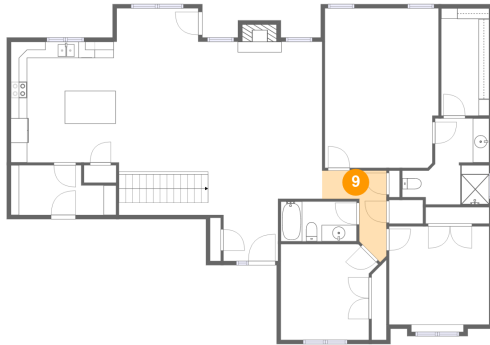
8 Floor 2 - Bath



Dimensions: 10'7" x 10'6"
Area: 82 sq. ft
Counted as living area: Yes

Heated: Yes
Finished: Yes
Enclosed: Yes
Contiguous: Yes
Permitted: Yes
Wet space: Yes
Addition: No
Conversion: No

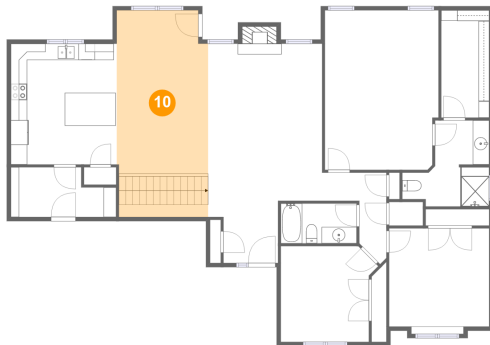
9 Floor 2 - Hall



Dimensions: 7'10" x 11'1"
Area: 49 sq. ft
Counted as living area: Yes

Heated: Yes
Finished: Yes
Enclosed: Yes
Contiguous: Yes
Permitted: Yes
Wet space: No
Addition: No
Conversion: No

10 Floor 2 - Dining Area



Dimensions: 11'1" x 25'2"
Area: 274 sq. ft
Counted as living area: Yes

Heated: Yes
Finished: Yes
Enclosed: Yes
Contiguous: Yes
Permitted: Yes
Wet space: No
Addition: No
Conversion: No

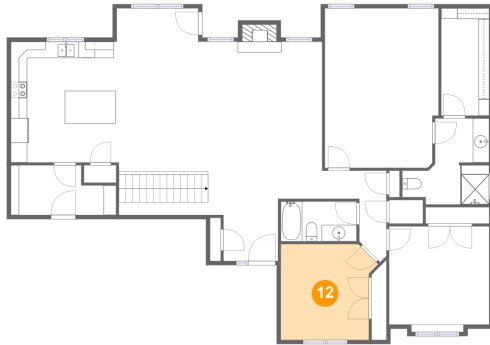
11 Floor 2 - Kitchen



Dimensions: 12'11" x 14'9"
Area: 190 sq. ft
Counted as living area: Yes

Heated: Yes
Finished: Yes
Enclosed: Yes
Contiguous: Yes
Permitted: Yes
Wet space: No
Addition: No
Conversion: No

12 Floor 2 - Bedroom



Dimensions: 11'10" x 11'8"
Area: 126 sq. ft
Counted as living area: Yes

Heated: Yes
Finished: Yes
Enclosed: Yes
Contiguous: Yes
Permitted: Yes
Wet space: No
Addition: No
Conversion: No

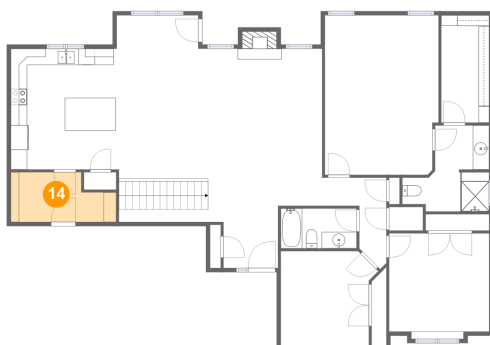
13 Floor 2 - Bedroom



Dimensions: 12'2" x 12'0"
Area: 152 sq. ft
Counted as living area: Yes

Heated: Yes
Finished: Yes
Enclosed: Yes
Contiguous: Yes
Permitted: Yes
Wet space: No
Addition: No
Conversion: No

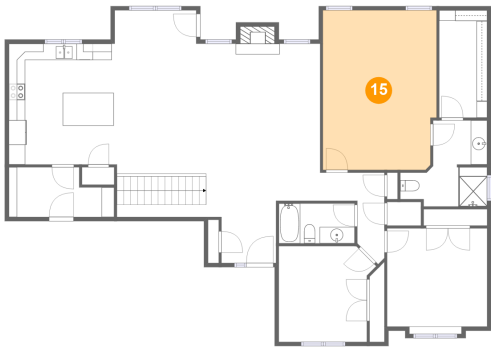
14 Floor 2 - Laundry



Dimensions: 12'10" x 6'1"
Area: 68 sq. ft
Counted as living area: Yes

Heated: Yes
Finished: Yes
Enclosed: Yes
Contiguous: Yes
Permitted: Yes
Wet space: No
Addition: No
Conversion: No

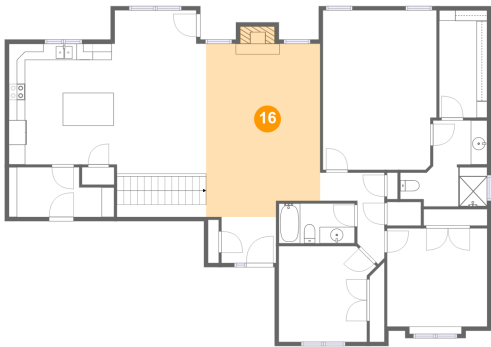
15 Floor 2 - Primary Bedroom



Dimensions: 13'10" x 19'5"
Area: 265 sq. ft
Counted as living area: Yes

Heated: Yes
Finished: Yes
Enclosed: Yes
Contiguous: Yes
Permitted: Yes
Wet space: No
Addition: No
Conversion: No

16 Floor 2 - Living Room



Dimensions: 13'11" x 21'2"
Area: 292 sq. ft
Counted as living area: Yes

Heated: Yes
Finished: Yes
Enclosed: Yes
Contiguous: Yes
Permitted: Yes
Wet space: No
Addition: No
Conversion: No