

Home report

573 Crestland Drive, Roanoke, Virginia 24019, United States




Total Area: 1321 sq. ft
Below Ground: 0 sq. ft, Floor 2: 1321 sq. ft
Excluded: Garage 617 sq. ft, Basement 689 sq. ft, Screened porch 134 sq. ft, Fireplace 11 sq. ft, Walls: 184 sq. ft

Property summary

 **2** Floors

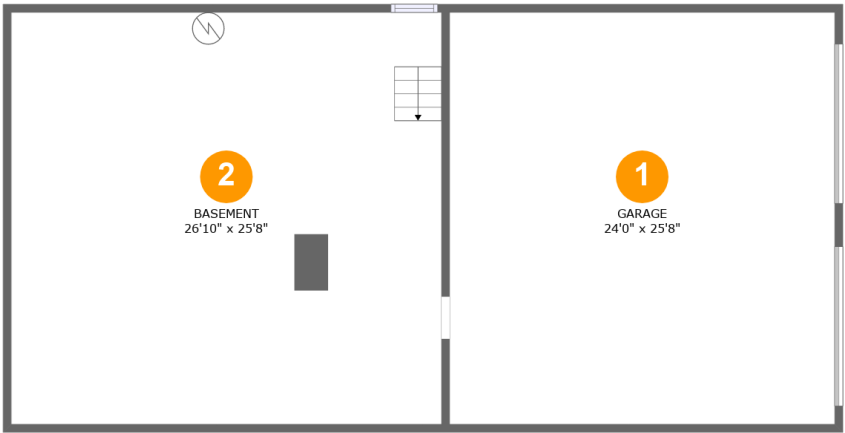
 **3** Bedrooms

 **1** Bathrooms

 **1** Garages

Home report

573 Crestland Drive, Roanoke, Virginia 24019, United States



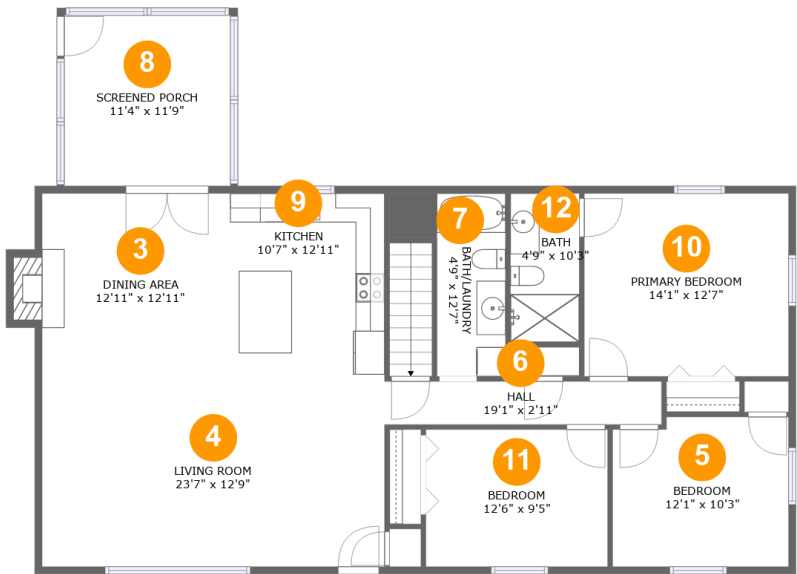
Room dimensions

Floor 1 Below ground Total:0sqft Excluded: 1306sqft

#		Max Dimensions	sqft	Included
1	Garage	24'0" x 25'8"	617 sq. ft	No
2	Basement	26'10" x 25'8"	689 sq. ft	No

Home report

573 Crestland Drive, Roanoke, Virginia 24019, United States



Room dimensions

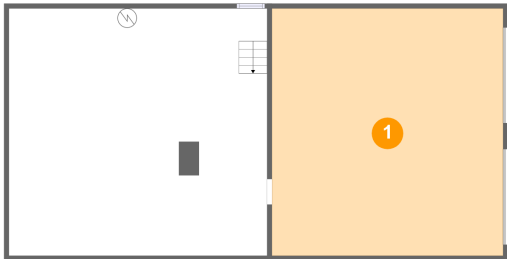
Floor 2

Total:1321sqft

Excluded: 145sqft

#		Max Dimensions	sqft	Included
3	Dining Area	12'11" x 12'11"	176 sq. ft	Yes
4	Living Room	23'7" x 12'9"	301 sq. ft	Yes
5	Bedroom	12'1" x 10'3"	122 sq. ft	Yes
6	Hall	19'1" x 2'11"	57 sq. ft	Yes
7	BATH/LAUNDRY	4'9" x 12'7"	69 sq. ft	Yes
8	Screened Porch	11'4" x 11'9"	134 sq. ft	No
9	Kitchen	10'7" x 12'11"	137 sq. ft	Yes
10	Primary Bedroom	14'1" x 12'7"	177 sq. ft	Yes
11	Bedroom	12'6" x 9'5"	118 sq. ft	Yes
12	Bath	4'9" x 10'3"	49 sq. ft	Yes

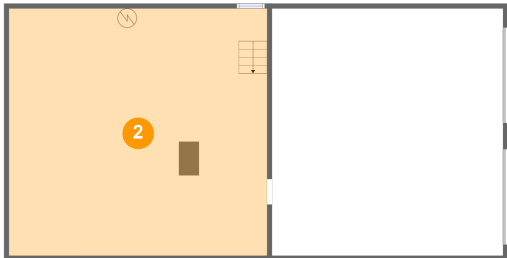
1 Floor 1 - Garage



Max Dimensions: 24'0" x 25'8"
Calculated Area: 617 sq. ft
Included: No

Heated: No
Finished: No
Enclosed: Yes
Contiguous: Yes
Permitted: Yes
Wet space: No
Addition: No
Conversion: No

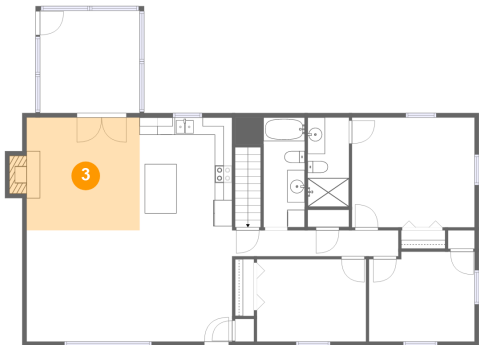
2 Floor 1 - Basement



Max Dimensions: 26'10" x 25'8"
Calculated Area: 689 sq. ft
Included: No

Heated: Yes
Finished: No
Enclosed: Yes
Contiguous: Yes
Permitted: Yes
Wet space: No
Addition: No
Conversion: No

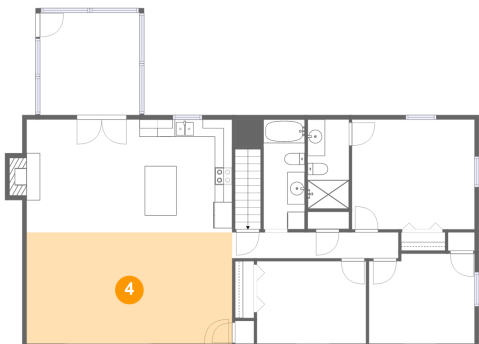
3 Floor 2 - Dining Area



Max Dimensions: 12'11" x 12'11"
Calculated Area: 176 sq. ft
Included: Yes

Heated: Yes
Finished: Yes
Enclosed: Yes
Contiguous: Yes
Permitted: Yes
Wet space: No
Addition: No
Conversion: No

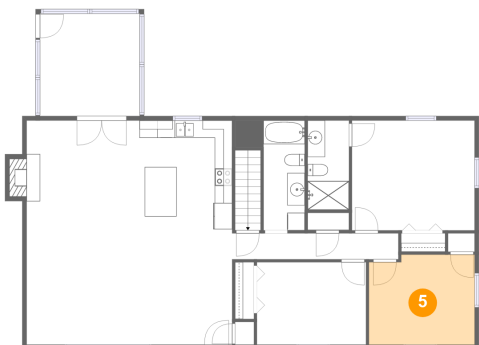
4 Floor 2 - Living Room



Max Dimensions: 23'7" x 12'9"
Calculated Area: 301 sq. ft
Included: Yes

Heated: Yes
Finished: Yes
Enclosed: Yes
Contiguous: Yes
Permitted: Yes
Wet space: No
Addition: No
Conversion: No

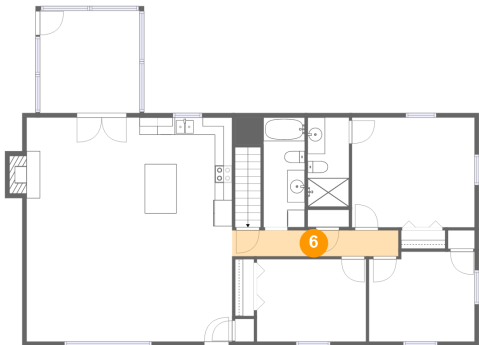
5 Floor 2 - Bedroom



Max Dimensions: 12'1" x 10'3"
Calculated Area: 122 sq. ft
Included: Yes

Heated: Yes
Finished: Yes
Enclosed: Yes
Contiguous: Yes
Permitted: Yes
Wet space: No
Addition: No
Conversion: No

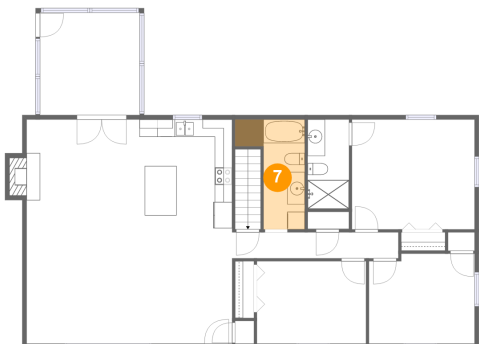
6 Floor 2 - Hall



Max Dimensions: 19'1" x 2'11"
Calculated Area: 57 sq. ft
Included: Yes

Heated: Yes
Finished: Yes
Enclosed: Yes
Contiguous: Yes
Permitted: Yes
Wet space: No
Addition: No
Conversion: No

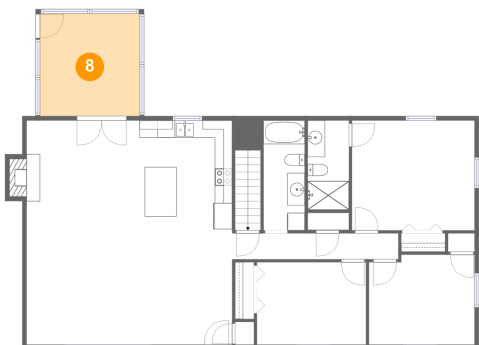
7 Floor 2 - BATH/LAUNDRY



Max Dimensions: 4'9" x 12'7"
Calculated Area: 69 sq. ft
Included: Yes

Heated: Yes
Finished: Yes
Enclosed: Yes
Contiguous: Yes
Permitted: Yes
Wet space: No
Addition: No
Conversion: No

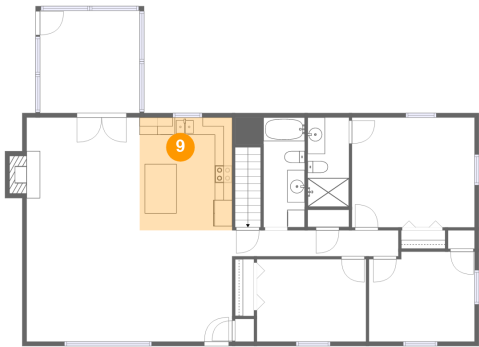
8 Floor 2 - Screened Porch



Max Dimensions: 11'4" x 11'9"
Calculated Area: 134 sq. ft
Included: No

Heated: No
Finished: Yes
Enclosed: No
Contiguous: Yes
Permitted: Yes
Wet space: No
Addition: No
Conversion: No

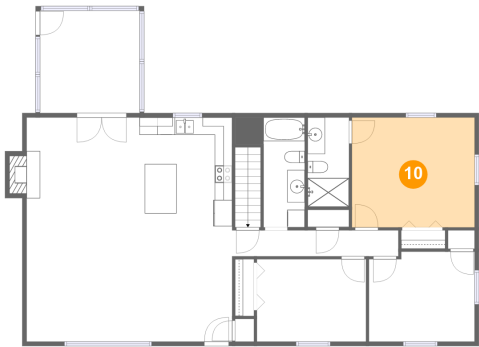
9 Floor 2 - Kitchen



Max Dimensions: 10'7" x 12'11"
Calculated Area: 137 sq. ft
Included: Yes

Heated: Yes
Finished: Yes
Enclosed: Yes
Contiguous: Yes
Permitted: Yes
Wet space: No
Addition: No
Conversion: No

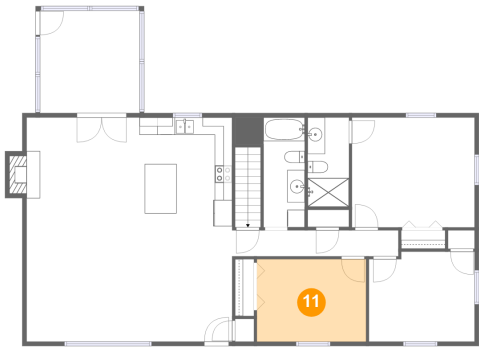
10 Floor 2 - Primary Bedroom



Max Dimensions: 14'1" x 12'7"
Calculated Area: 177 sq. ft
Included: Yes

Heated: Yes
Finished: Yes
Enclosed: Yes
Contiguous: Yes
Permitted: Yes
Wet space: No
Addition: No
Conversion: No

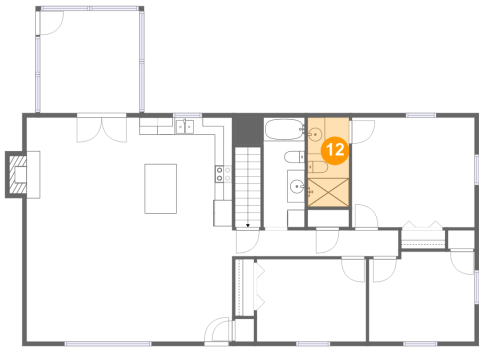
11 Floor 2 - Bedroom



Max Dimensions: 12'6" x 9'5"
Calculated Area: 118 sq. ft
Included: Yes

Heated: Yes
Finished: Yes
Enclosed: Yes
Contiguous: Yes
Permitted: Yes
Wet space: No
Addition: No
Conversion: No

12 Floor 2 - Bath



Max Dimensions: 4'9" x 10'3"
Calculated Area: 49 sq. ft
Included: Yes

Heated: Yes
Finished: Yes
Enclosed: Yes
Contiguous: Yes
Permitted: Yes
Wet space: Yes
Addition: No
Conversion: No