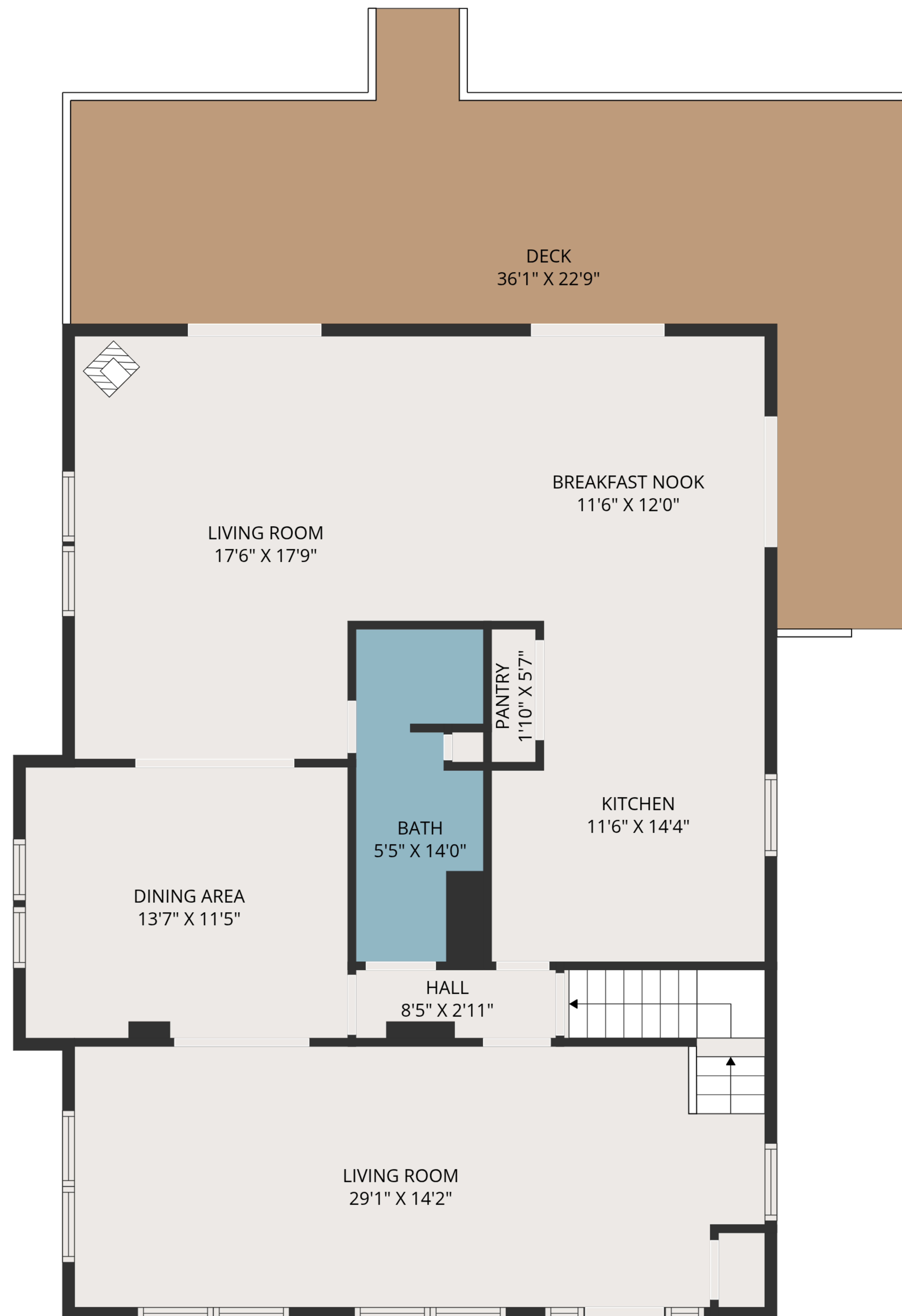


BASEMENT
31'2" X 22'9"

TOTAL: 1858 sq. ft

Basement: 0 sq. ft, 1st floor: 1211 sq. ft, 2nd floor: 647 sq. ft, 3rd floor: 0 sq. ft
EXCLUDED AREAS: BASEMENT: 677 sq. ft, DECK: 418 sq. ft, LOW CEILING: 71 sq. ft,
ATTIC: 194 sq. ft, WALLS: 219 sq. ft

MEASUREMENTS ARE DEEMED HIGHLY RELIABLE BUT NOT GUARANTEED.



TOTAL: 1858 sq. ft

Basement: 0 sq. ft, 1st floor: 1211 sq. ft, 2nd floor: 647 sq. ft, 3rd floor: 0 sq. ft
 EXCLUDED AREAS: BASEMENT: 677 sq. ft, DECK: 418 sq. ft, LOW CEILING: 71 sq. ft,
 ATTIC: 194 sq. ft, WALLS: 219 sq. ft

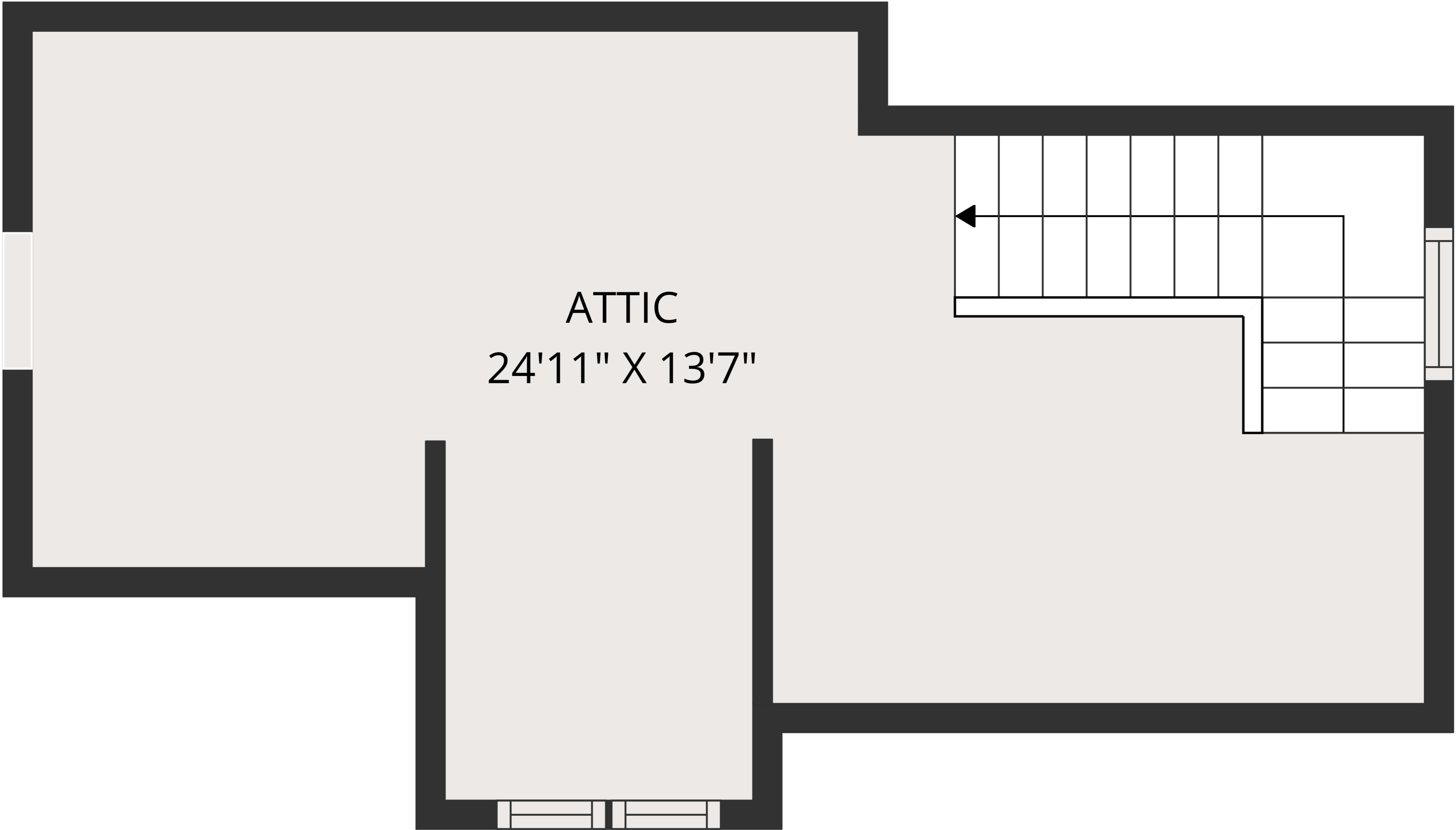
MEASUREMENTS ARE DEEMED HIGHLY RELIABLE BUT NOT GUARANTEED.



TOTAL: 1858 sq. ft

Basement: 0 sq. ft, 1st floor: 1211 sq. ft, 2nd floor: 647 sq. ft, 3rd floor: 0 sq. ft
EXCLUDED AREAS: BASEMENT: 677 sq. ft, DECK: 418 sq. ft, LOW CEILING: 71 sq. ft,
ATTIC: 194 sq. ft, WALLS: 219 sq. ft

MEASUREMENTS ARE DEEMED HIGHLY RELIABLE BUT NOT GUARANTEED.



ATTIC
24'11" X 13'7"

TOTAL: 1858 sq. ft

Basement: 0 sq. ft, 1st floor: 1211 sq. ft, 2nd floor: 647 sq. ft, 3rd floor: 0 sq. ft
EXCLUDED AREAS: BASEMENT: 677 sq. ft, DECK: 418 sq. ft, LOW CEILING: 71 sq. ft,
ATTIC: 194 sq. ft, WALLS: 219 sq. ft

MEASUREMENTS ARE DEEMED HIGHLY RELIABLE BUT NOT GUARANTEED.



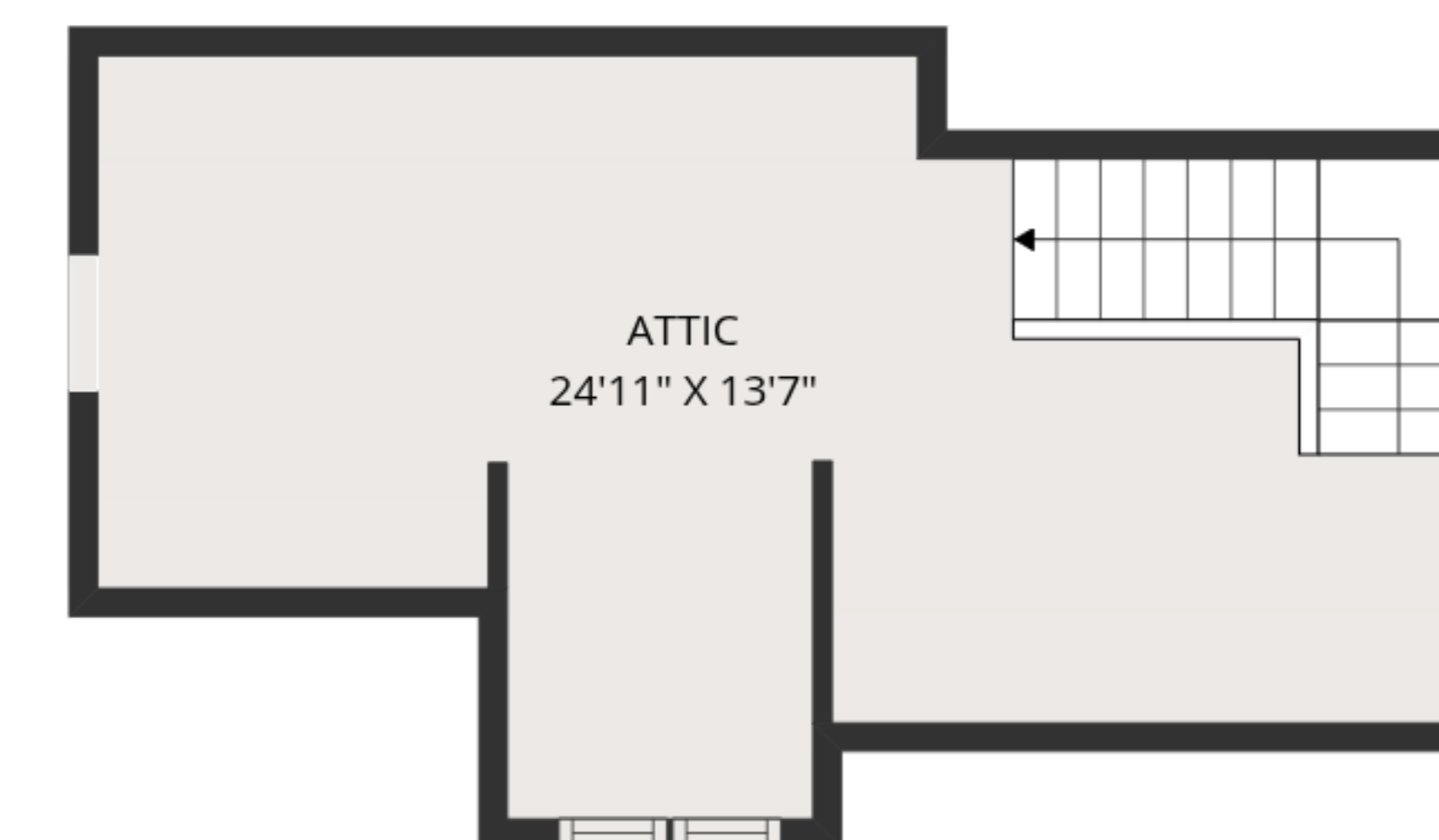
1ST FLOOR



2ND FLOOR



BASEMENT



3RD FLOOR

TOTAL: 1858 sq. ft

Basement: 0 sq. ft, 1st floor: 1211 sq. ft, 2nd floor: 647 sq. ft, 3rd floor: 0 sq. ft
 EXCLUDED AREAS: BASEMENT: 677 sq. ft, DECK: 418 sq. ft, LOW CEILING: 71 sq. ft,
 ATTIC: 194 sq. ft, WALLS: 219 sq. ft

MEASUREMENTS ARE DEEMED HIGHLY RELIABLE BUT NOT GUARANTEED.