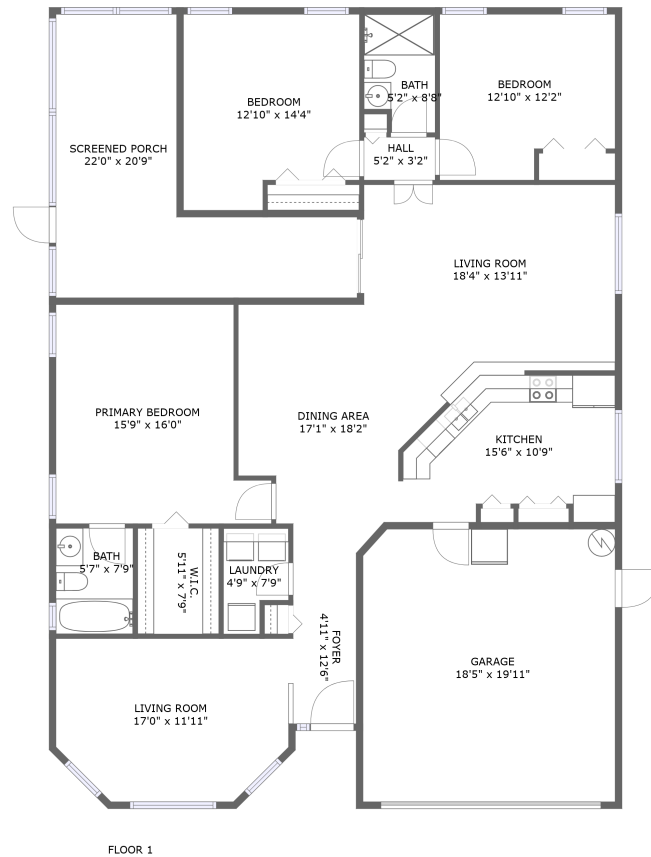






3631 Chatham Drive, Countryside Imperial, Palm Harbor, Pinellas County, Florida, United States,

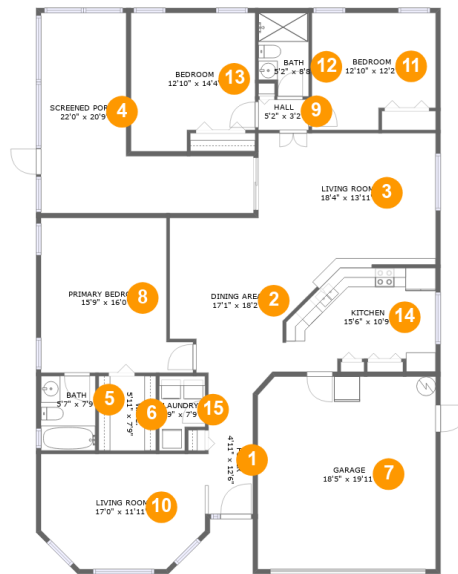


Property Summary

 **1** garages  **3** bedrooms  **2** bathrooms  **0** half baths

 **1** floors  **1,747** Gross Living Area sqft  **2,411** total sqft

3631 Chatham Drive, Countryside Imperial, Palm Harbor, Pinellas County, Florida, United States,



Room Dimensions

Floor 1

Total sqft: 2411

Living area: 1747

#	Room name	Dimensions	Area (sqft)	Counted as Living Area
1	Foyer	4'11" x 12'6"	60 sq. ft	Yes
2	Dining Area	17'1" x 18'2"	218 sq. ft	Yes
3	Living Room	18'4" x 13'11"	232 sq. ft	Yes
4	Screened Porch	22'0" x 20'9"	261 sq. ft	No
5	Bath	5'7" x 7'9"	44 sq. ft	Yes
6	W.i.c.	5'11" x 7'9"	46 sq. ft	Yes
7	Garage	18'5" x 19'11"	366 sq. ft	No
8	Primary Bedroom	15'9" x 16'0"	217 sq. ft	Yes
9	Hall	5'2" x 3'2"	16 sq. ft	Yes
10	Living Room	17'0" x 11'11"	187 sq. ft	Yes
11	Bedroom	12'10" x 12'2"	142 sq. ft	Yes

Scan captured on Thu, 13 Jun 2024 02:22:22 GMT

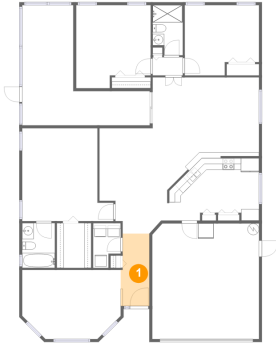
Information is calculated by CubiCasa technology; deemed highly reliable but not guaranteed.

3631 Chatham Drive, Countryside Imperial, Palm Harbor, Pinellas County, Florida, United States,

#	Room name	Dimensions	Area (sqft)	Counted as Living Area
12	Bath	5'2" x 8'8"	42 sq. ft	Yes
13	Bedroom	12'10" x 14'4"	169 sq. ft	Yes
14	Kitchen	15'6" x 10'9"	141 sq. ft	Yes
15	Laundry	4'9" x 7'9"	32 sq. ft	Yes

3631 Chatham Drive, Countryside Imperial, Palm Harbor, Pinellas County, Florida, United States,

1 Floor 1 - Foyer



Dimensions: 4'11" x 12'6"
Area: 60 sq. ft
Counted as Living Area:
Yes

Heated: Yes
Finished: Yes
Enclosed: Yes
Contiguous:
Yes
Permitted: Yes
Wet Space: No
Addition: No
Conversion: No

2 Floor 1 - Dining Area

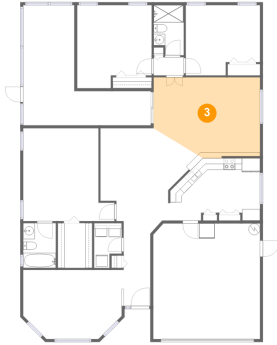


Dimensions: 17'1" x 18'2"
Area: 218 sq. ft
Counted as Living Area:
Yes

Heated: Yes
Finished: Yes
Enclosed: Yes
Contiguous:
Yes
Permitted: Yes
Wet Space: No
Addition: No
Conversion: No

3631 Chatham Drive, Countryside Imperial, Palm Harbor, Pinellas County, Florida, United States,

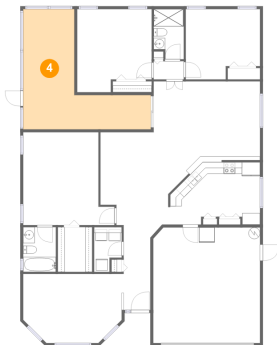
3 Floor 1 - Living Room



Dimensions: 18'4" x 13'11"
Area: 232 sq. ft
Counted as Living Area:
Yes

Heated: Yes
Finished: Yes
Enclosed: Yes
Contiguous:
Yes
Permitted: Yes
Wet Space: No
Addition: No
Conversion: No

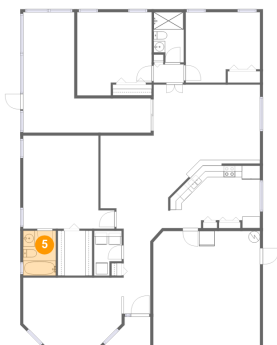
4 Floor 1 - Screened Porch



Dimensions: 22'0" x 20'9"
Area: 261 sq. ft
Counted as Living Area: No

Heated: No
Finished: Yes
Enclosed: No
Contiguous: Yes
Permitted: Yes
Wet Space: No
Addition: No
Conversion: No

5 Floor 1 - Bath

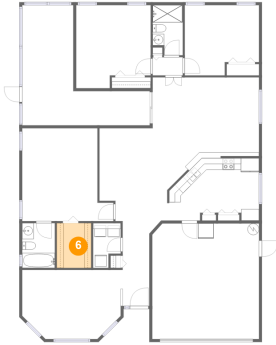


Dimensions: 5'7" x 7'9"
Area: 44 sq. ft
Counted as Living Area:
Yes

Heated: Yes
Finished: Yes
Enclosed: Yes
Contiguous:
Yes
Permitted: Yes
Wet Space: Yes
Addition: No
Conversion: No

3631 Chatham Drive, Countryside Imperial, Palm Harbor, Pinellas County, Florida, United States,

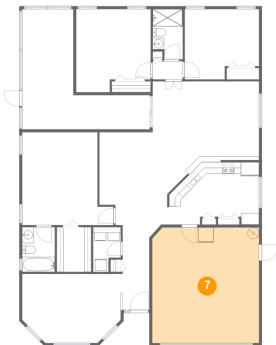
6 Floor 1 - W.i.c.



Dimensions: 5'11" x 7'9"
Area: 46 sq. ft
Counted as Living Area:
Yes

Heated: Yes
Finished: Yes
Enclosed: Yes
Contiguous:
Yes
Permitted: Yes
Wet Space: No
Addition: No
Conversion: No

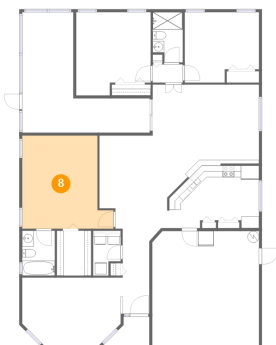
7 Floor 1 - Garage



Dimensions: 18'5" x 19'11"
Area: 366 sq. ft
Counted as Living Area: No

Heated: No
Finished: No
Enclosed: Yes
Contiguous: Yes
Permitted: Yes
Wet Space: No
Addition: No
Conversion: No

8 Floor 1 - Primary Bedroom

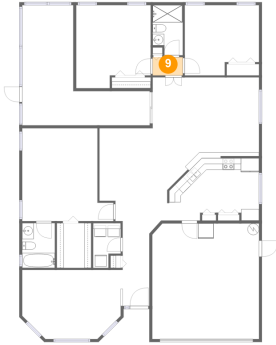


Dimensions: 15'9" x 16'0"
Area: 217 sq. ft
Counted as Living Area:
Yes

Heated: Yes
Finished: Yes
Enclosed: Yes
Contiguous:
Yes
Permitted: Yes
Wet Space: No
Addition: No
Conversion: No

3631 Chatham Drive, Countryside Imperial, Palm Harbor, Pinellas County, Florida, United States,

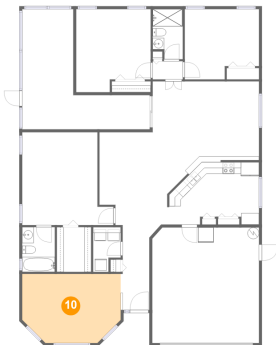
9 Floor 1 - Hall



Dimensions: 5'2" x 3'2"
Area: 16 sq. ft
Counted as Living Area:
Yes

Heated: Yes
Finished: Yes
Enclosed: Yes
Contiguous:
Yes
Permitted: Yes
Wet Space: No
Addition: No
Conversion: No

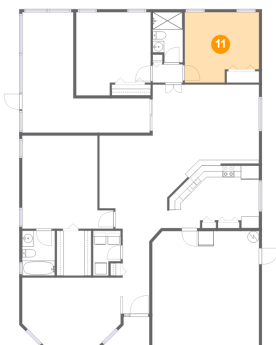
10 Floor 1 - Living Room



Dimensions: 17'0" x 11'11"
Area: 187 sq. ft
Counted as Living Area:
Yes

Heated: Yes
Finished: Yes
Enclosed: Yes
Contiguous:
Yes
Permitted: Yes
Wet Space: No
Addition: No
Conversion: No

11 Floor 1 - Bedroom



Dimensions: 12'10" x 12'2"
Area: 142 sq. ft
Counted as Living Area:
Yes

Heated: Yes
Finished: Yes
Enclosed: Yes
Contiguous:
Yes
Permitted: Yes
Wet Space: No
Addition: No
Conversion: No

3631 Chatham Drive, Countryside Imperial, Palm Harbor, Pinellas County, Florida, United States,

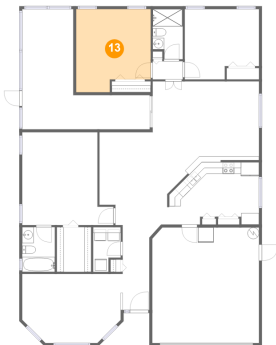
12 Floor 1 - Bath



Dimensions: 5'2" x 8'8"
Area: 42 sq. ft
Counted as Living Area:
Yes

Heated: Yes
Finished: Yes
Enclosed: Yes
Contiguous:
Yes
Permitted: Yes
Wet Space: Yes
Addition: No
Conversion: No

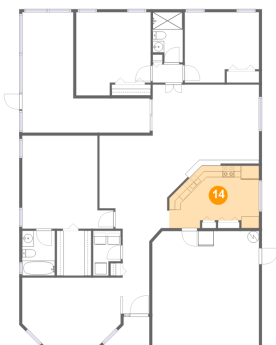
13 Floor 1 - Bedroom



Dimensions: 12'10" x 14'4"
Area: 169 sq. ft
Counted as Living Area:
Yes

Heated: Yes
Finished: Yes
Enclosed: Yes
Contiguous:
Yes
Permitted: Yes
Wet Space: No
Addition: No
Conversion: No

14 Floor 1 - Kitchen

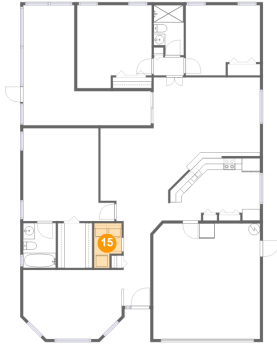


Dimensions: 15'6" x 10'9"
Area: 141 sq. ft
Counted as Living Area:
Yes

Heated: Yes
Finished: Yes
Enclosed: Yes
Contiguous:
Yes
Permitted: Yes
Wet Space: No
Addition: No
Conversion: No

3631 Chatham Drive, Countryside Imperial, Palm Harbor, Pinellas County, Florida, United States,

15 Floor 1 - Laundry



Dimensions: 4'9" x 7'9"
Area: 32 sq. ft
Counted as Living Area:
Yes

Heated: Yes
Finished: Yes
Enclosed: Yes
Contiguous:
Yes
Permitted: Yes
Wet Space: No
Addition: No
Conversion: No