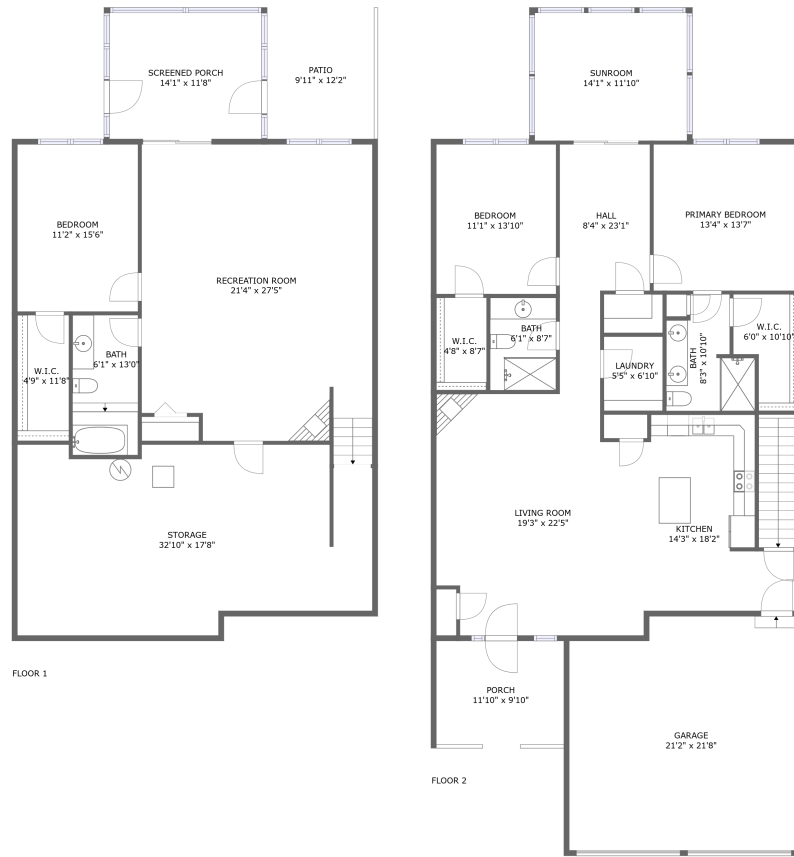



6634 Stonelyn Cottage Court, Dillard Court, Hollins, Roanoke County, Virginia, United States,



Property Summary

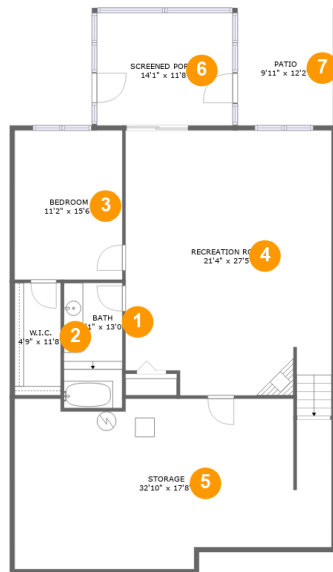
 **1** garages  **3** bedrooms  **3** bathrooms  **0** half baths

 **2** floors

 **2,694** Gross Living Area sqft

 **4,138** total sqft

6634 Stonelyn Cottage Court, Dillard Court, Hollins, Roanoke County, Virginia, United States,



Room Dimensions

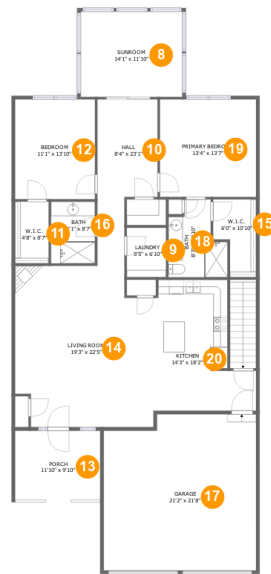
Floor 1

Total sqft: 1823

Living area: 962

#	Room name	Dimensions	Area (sqft)	Counted as Living Area
1	Bath	6'1" x 13'0"	79 sq. ft	Yes
2	W.i.c.	4'9" x 11'8"	56 sq. ft	Yes
3	Bedroom	11'2" x 15'6"	173 sq. ft	Yes
4	Recreation Room	21'4" x 27'5"	578 sq. ft	Yes
5	Storage	32'10" x 17'8"	529 sq. ft	No
6	Screened Porch	14'1" x 11'8"	165 sq. ft	No
7	Patio	9'11" x 12'2"	121 sq. ft	No

6634 Stonelyn Cottage Court, Dillard Court, Hollins, Roanoke County, Virginia, United States,



Room Dimensions

Floor 2

Total sqft: 2315

Living area: 1732

#	Room name	Dimensions	Area (sqft)	Counted as Living Area
8	Sunroom	14'1" x 11'10"	167 sq. ft	Yes
9	Laundry	5'5" x 6'10"	37 sq. ft	Yes
10	Hall	8'4" x 23'1"	149 sq. ft	Yes
11	W.i.c.	4'8" x 8'7"	40 sq. ft	Yes
12	Bedroom	11'1" x 13'10"	154 sq. ft	Yes
13	Porch	11'10" x 9'10"	116 sq. ft	No
14	Living Room	19'3" x 22'5"	402 sq. ft	Yes
15	W.i.c.	6'0" x 10'10"	52 sq. ft	Yes
16	Bath	6'1" x 8'7"	52 sq. ft	Yes
17	Garage	21'2" x 21'8"	441 sq. ft	No
18	Bath	8'3" x 10'10"	69 sq. ft	Yes

Scan captured on Mon, 09 Sep 2024 16:16:19 GMT

Information is calculated by CubiCasa technology; deemed highly reliable but not guaranteed.

**6634 Stonelyn Cottage Court, Dillard Court,
Hollins, Roanoke County, Virginia, United States,**

#	Room name	Dimensions	Area (sqft)	Counted as Living Area
19	Primary Bedroom	13'4" x 13'7"	181 sq. ft	Yes
20	Kitchen	14'3" x 18'2"	207 sq. ft	Yes

6634 Stonelyn Cottage Court, Dillard Court, Hollins, Roanoke County, Virginia, United States,

1 Floor 1 - Bath



Dimensions: 6'1" x 13'0"
Area: 79 sq. ft
Counted as Living Area:
Yes

Heated: Yes
Finished: Yes
Enclosed: Yes
Contiguous:
Yes
Permitted: Yes
Wet Space: Yes
Addition: No
Conversion: No

2 Floor 1 - W.i.c.

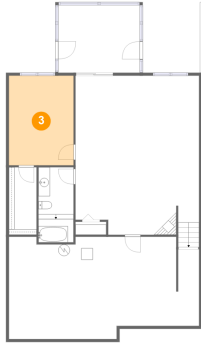


Dimensions: 4'9" x 11'8"
Area: 56 sq. ft
Counted as Living Area:
Yes

Heated: Yes
Finished: Yes
Enclosed: Yes
Contiguous:
Yes
Permitted: Yes
Wet Space: No
Addition: No
Conversion: No

6634 Stonelyn Cottage Court, Dillard Court, Hollins, Roanoke County, Virginia, United States,

3 Floor 1 - Bedroom



Dimensions: 11'2" x 15'6"
Area: 173 sq. ft
Counted as Living Area:
Yes

Heated: Yes
Finished: Yes
Enclosed: Yes
Contiguous:
Yes
Permitted: Yes
Wet Space: No
Addition: No
Conversion: No

4 Floor 1 - Recreation Room



Dimensions: 21'4" x 27'5"
Area: 578 sq. ft
Counted as Living Area:
Yes

Heated: Yes
Finished: Yes
Enclosed: Yes
Contiguous:
Yes
Permitted: Yes
Wet Space: No
Addition: No
Conversion: No

5 Floor 1 - Storage



Dimensions: 32'10" x 17'8"
Area: 529 sq. ft
Counted as Living Area: No

Heated: No
Finished: No
Enclosed: No
Contiguous: Yes
Permitted: Yes
Wet Space: No
Addition: No
Conversion: No

6634 Stonelyn Cottage Court, Dillard Court, Hollins, Roanoke County, Virginia, United States,

6 Floor 1 - Screened Porch



Dimensions: 14'1" x 11'8"
Area: 165 sq. ft
Counted as Living Area: No

Heated: No
Finished: Yes
Enclosed: No
Contiguous: Yes
Permitted: Yes
Wet Space: No
Addition: No
Conversion: No

7 Floor 1 - Patio



Dimensions: 9'11" x 12'2"
Area: 121 sq. ft
Counted as Living Area: No

Heated: No
Finished: No
Enclosed: No
Contiguous: Yes
Permitted: Yes
Wet Space: No
Addition: No
Conversion: No

8 Floor 2 - Sunroom



Dimensions: 14'1" x 11'10"
Area: 167 sq. ft
Counted as Living Area:
Yes

Heated: Yes
Finished: Yes
Enclosed: Yes
Contiguous:
Yes
Permitted: Yes
Wet Space: No
Addition: No
Conversion: No

6634 Stonelyn Cottage Court, Dillard Court, Hollins, Roanoke County, Virginia, United States,

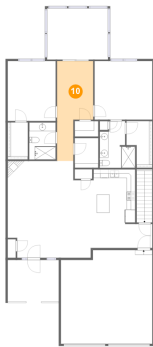
9 Floor 2 - Laundry



Dimensions: 5'5" x 6'10"
Area: 37 sq. ft
Counted as Living Area:
Yes

Heated: Yes
Finished: Yes
Enclosed: Yes
Contiguous:
Yes
Permitted: Yes
Wet Space: No
Addition: No
Conversion: No

10 Floor 2 - Hall



Dimensions: 8'4" x 23'1"
Area: 149 sq. ft
Counted as Living Area:
Yes

Heated: Yes
Finished: Yes
Enclosed: Yes
Contiguous:
Yes
Permitted: Yes
Wet Space: No
Addition: No
Conversion: No

11 Floor 2 - W.i.c.

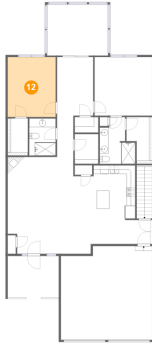


Dimensions: 4'8" x 8'7"
Area: 40 sq. ft
Counted as Living Area:
Yes

Heated: Yes
Finished: Yes
Enclosed: Yes
Contiguous:
Yes
Permitted: Yes
Wet Space: No
Addition: No
Conversion: No

6634 Stonelyn Cottage Court, Dillard Court, Hollins, Roanoke County, Virginia, United States,

12 Floor 2 - Bedroom



Dimensions: 11'1" x 13'10"
Area: 154 sq. ft
Counted as Living Area:
Yes

Heated: Yes
Finished: Yes
Enclosed: Yes
Contiguous:
Yes
Permitted: Yes
Wet Space: No
Addition: No
Conversion: No

13 Floor 2 - Porch



Dimensions: 11'10" x 9'10"
Area: 116 sq. ft
Counted as Living Area: No

Heated: No
Finished: No
Enclosed: No
Contiguous: Yes
Permitted: Yes
Wet Space: No
Addition: No
Conversion: No

14 Floor 2 - Living Room



Dimensions: 19'3" x 22'5"
Area: 402 sq. ft
Counted as Living Area:
Yes

Heated: Yes
Finished: Yes
Enclosed: Yes
Contiguous:
Yes
Permitted: Yes
Wet Space: No
Addition: No
Conversion: No

6634 Stonelyn Cottage Court, Dillard Court, Hollins, Roanoke County, Virginia, United States,

15 Floor 2 - W.i.c.



Dimensions: 6'0" x 10'10"
Area: 52 sq. ft
Counted as Living Area:
Yes

Heated: Yes
Finished: Yes
Enclosed: Yes
Contiguous:
Yes
Permitted: Yes
Wet Space: No
Addition: No
Conversion: No

16 Floor 2 - Bath



Dimensions: 6'1" x 8'7"
Area: 52 sq. ft
Counted as Living Area:
Yes

Heated: Yes
Finished: Yes
Enclosed: Yes
Contiguous:
Yes
Permitted: Yes
Wet Space: Yes
Addition: No
Conversion: No

17 Floor 2 - Garage

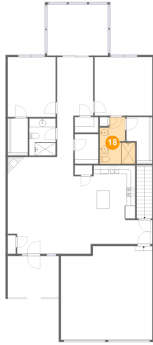


Dimensions: 21'2" x 21'8"
Area: 441 sq. ft
Counted as Living Area: No

Heated: No
Finished: No
Enclosed: Yes
Contiguous: Yes
Permitted: Yes
Wet Space: No
Addition: No
Conversion: No

6634 Stonelyn Cottage Court, Dillard Court, Hollins, Roanoke County, Virginia, United States,

18 Floor 2 - Bath



Dimensions: 8'3" x 10'10"
Area: 69 sq. ft
Counted as Living Area:
Yes

Heated: Yes
Finished: Yes
Enclosed: Yes
Contiguous:
Yes
Permitted: Yes
Wet Space: Yes
Addition: No
Conversion: No

19 Floor 2 - Primary Bedroom



Dimensions: 13'4" x 13'7"
Area: 181 sq. ft
Counted as Living Area:
Yes

Heated: Yes
Finished: Yes
Enclosed: Yes
Contiguous:
Yes
Permitted: Yes
Wet Space: No
Addition: No
Conversion: No

20 Floor 2 - Kitchen



Dimensions: 14'3" x 18'2"
Area: 207 sq. ft
Counted as Living Area:
Yes

Heated: Yes
Finished: Yes
Enclosed: Yes
Contiguous:
Yes
Permitted: Yes
Wet Space: No
Addition: No
Conversion: No