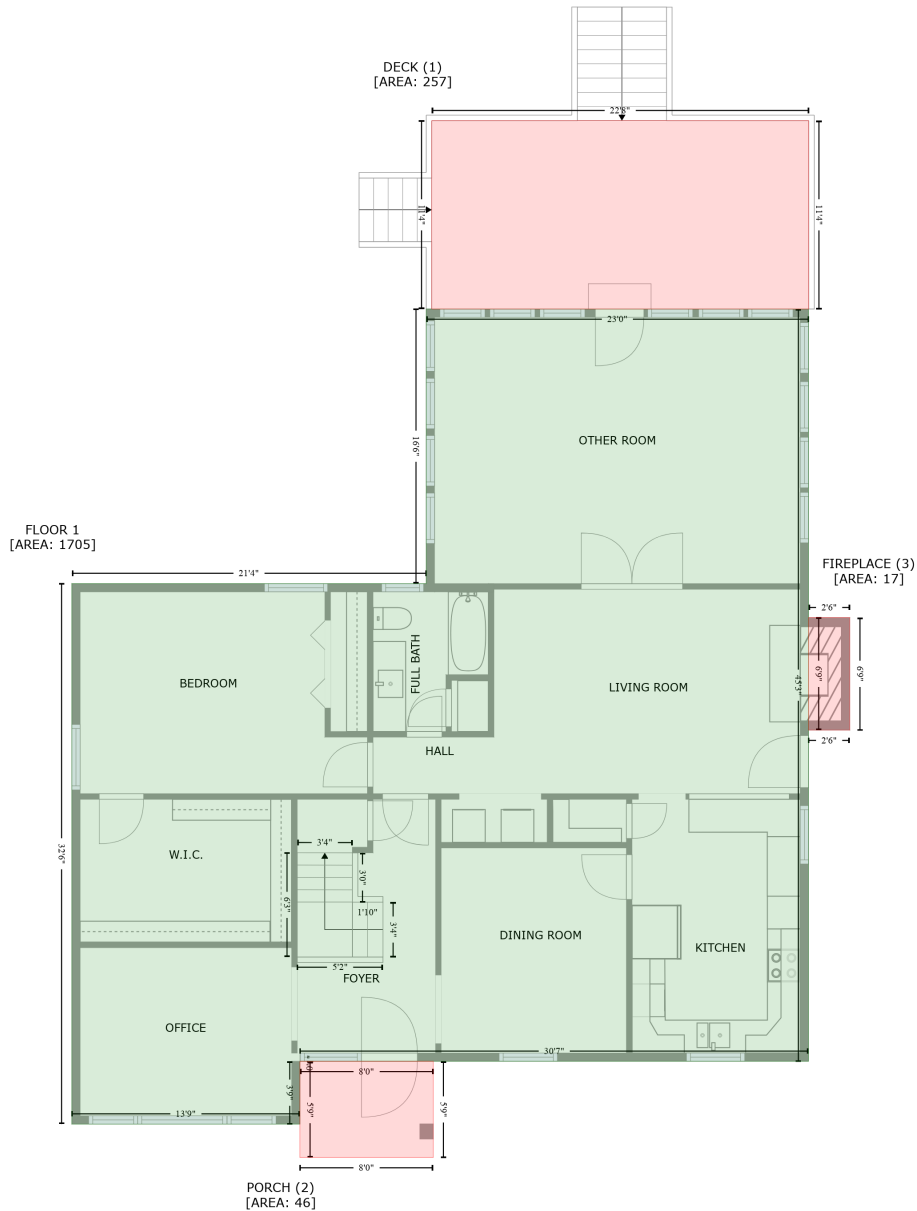


4720 Greenbrier Road, Raleigh, Wake County, North Carolina, United States, 27603

Gross Living Area: 2582 sq. ft



| Space | Area (sq. ft) | Calculation <small>Coordinate Polygon Area Algorithm using inches</small> |
|---------------------------|---------------|---|
| FLOOR 1 (Living area) | 1705 | $-\left((553.5 + 553.5) * (222.3 - 765) + (553.5 + 186.3) * (765 - 765) + (186.3 + 186.2) * (765 - 765.9) + (186.2 + 186.2) * (765.9 - 810.3) + (186.2 + 21.5) * (810.3 - 810.3) + (21.5 + 21.5) * (810.3 - 420.3) + (21.5 + 277.4) * (420.3 - 420.3) + (277.4 + 277.4) * (420.3 - 222.3) + (277.4 + 553.5) * (222.3 - 222.3)\right) * 0.5 * 0.00694$ |
| DECK (Non-living area) | 257 | $-\left((553.7 + 553.7) * (86.4 - 222.3) + (553.7 + 281.4) * (222.3 - 222.3) + (281.4 + 281.4) * (222.3 - 86.4) + (281.4 + 553.7) * (86.4 - 86.4)\right) * 0.5 * 0.00694$ |

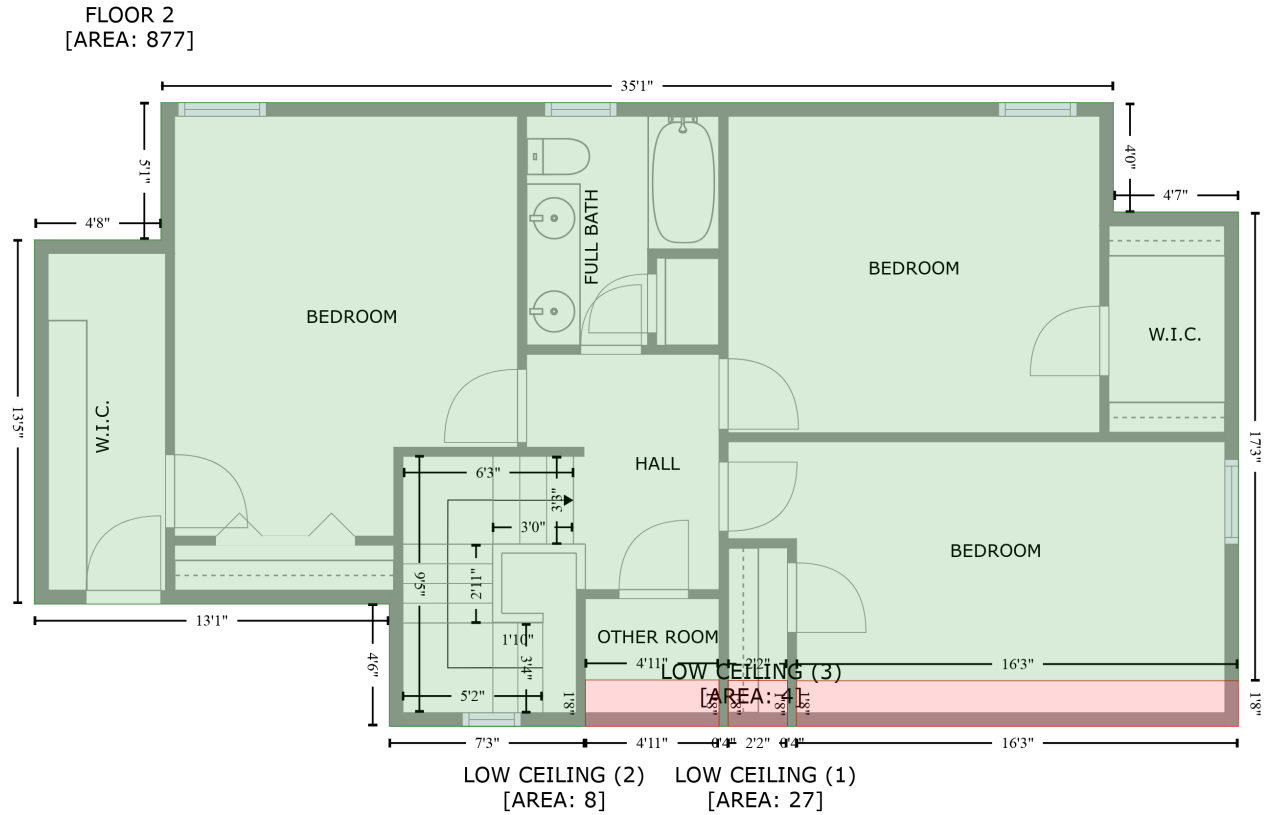
4720 Greenbrier Road, Raleigh, Wake County, North Carolina, United States, 27603

Gross Living Area: 2582 sq. ft

| Space | Area (sq. ft) | Calculation <small>Coordinate Polygon Area Algorithm using inches</small> |
|--------------------------------|---------------|--|
| PORCH (Non-living area) | 46 | $-((282.5 + 282.5) * (765 - 834.4) + (282.5 + 186.2) * (834.4 - 834.4) + (186.2 + 186.2) * (834.4 - 765.9) + (186.2 + 186.3) * (765.9 - 765) + (186.3 + 282.5) * (765 - 765)) * 0.5 * 0.00694$ |
| FIREPLACE (Non-living area) | 17 | $-((583.3 + 583.3) * (444.9 - 526.1) + (583.3 + 553.5) * (526.1 - 526.1) + (553.5 + 553.5) * (526.1 - 444.9) + (553.5 + 583.3) * (444.9 - 444.9)) * 0.5 * 0.00694$ |

4720 Greenbrier Road, Raleigh, Wake County, North Carolina, United States, 27603

Gross Living Area: 2582 sq. ft



| Space | Area (sq. ft) | Calculation <small>Coordinate Polygon Area Algorithm using inches</small> |
|----------------------------------|---------------|---|
| FLOOR 2 (Living area) | 877 | $-\left((489.5 + 489.5) * (420.5 - 468.8) + (489.5 + 544.8) * (468.8 - 468.8) + (544.8 + 544.8) * (468.8 - 675.8) + (544.8 + 349.5) * (675.8 - 675.8) + (349.5 + 349.5) * (675.8 - 696) + (349.5 + 345.5) * (696 - 696) + (345.5 + 345.5) * (696 - 675.7) + (345.5 + 319.3) * (675.7 - 675.7) + (319.3 + 319.3) * (675.7 - 696) + (319.3 + 315.3) * (696 - 696) + (315.3 + 315.3) * (696 - 675.5) + (315.3 + 256.2) * (675.5 - 675.5) + (256.2 + 256.2) * (675.5 - 696) + (256.2 + 169.6) * (696 - 696) + (169.6 + 169.6) * (696 - 642) + (169.6 + 12.7) * (642 - 642) + (12.7 + 12.7) * (642 - 481.2) + (12.7 + 68.6) * (481.2 - 481.2) + (68.6 + 68.6) * (481.2 - 420.5) + (68.6 + 489.5) * (420.5 - 420.5)\right) * 0.5 * 0.00694$ |
| LOW CEILING (Non-living area) | 27 | $-\left((544.8 + 544.8) * (675.8 - 696) + (544.8 + 349.5) * (696 - 696) + (349.5 + 349.5) * (696 - 675.8) + (349.5 + 544.8) * (675.8 - 675.8)\right) * 0.5 * 0.00694$ |
| LOW CEILING (Non-living area) | 8 | $-\left((315.3 + 315.3) * (675.5 - 696) + (315.3 + 256.2) * (696 - 696) + (256.2 + 256.2) * (696 - 675.5) + (256.2 + 315.3) * (675.5 - 675.5)\right) * 0.5 * 0.00694$ |
| LOW CEILING (Non-living area) | 4 | $-\left((345.5 + 345.5) * (675.7 - 696) + (345.5 + 319.3) * (696 - 696) + (319.3 + 319.3) * (696 - 675.7) + (319.3 + 345.5) * (675.7 - 675.7)\right) * 0.5 * 0.00694$ |