

46209 Strathcona Rd

Chilliwack BC V2P 3T1

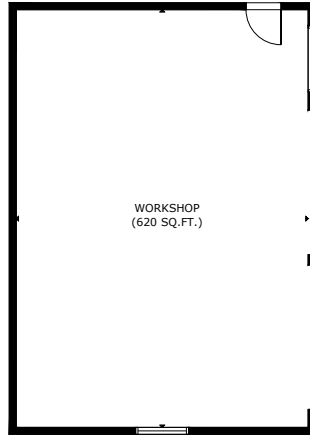
Main Level Area: 1,925 SQ.FT.

Upper Level Area: 480 SQ.FT.

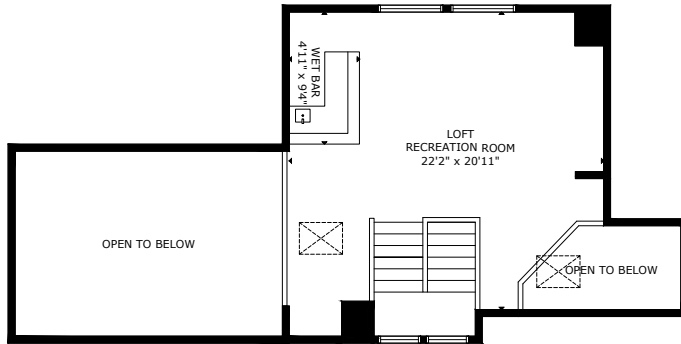
Total Area 2,405 SQ.FT.

Garage Area: 435 SQ.FT.

Workshop Area: 620 SQ.FT.



Workshop Area:



Upper Level Area:

Ceiling Height: 8'0"-11'0"

3



BEDROOMS

2

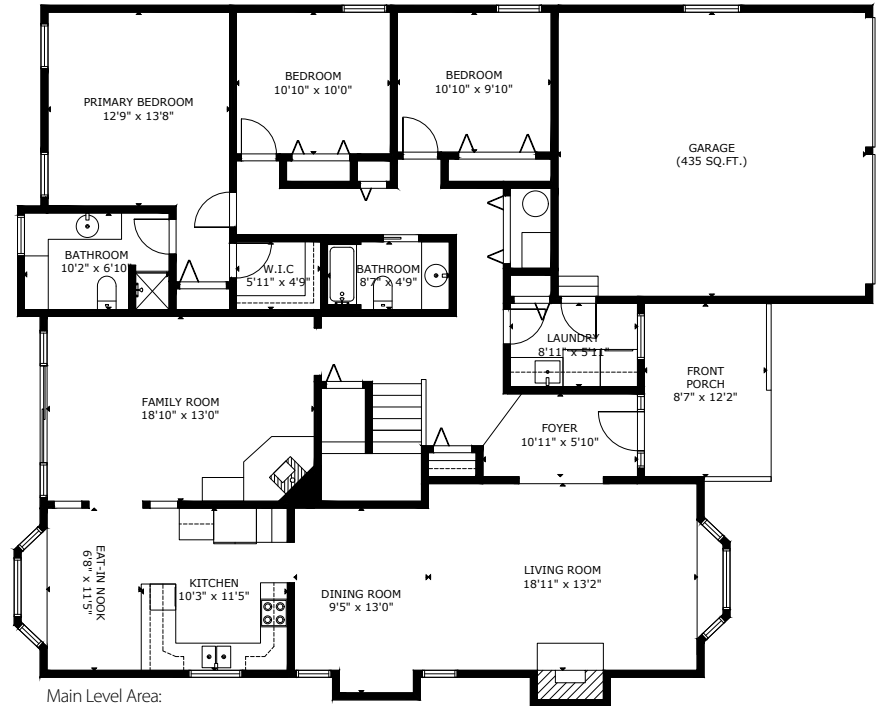


BATHROOMS

2,405



TOTAL SQ.FT.



Main Level Area:

Ceiling Height: 8'0"-16'0"

46209 STRATHCONA RD CHILLIWACK BC V2P 3T1

Measurements are approximate and may not be to scale. Gross measurements provided by agent.

The floor plan illustration is not suitable for construction/architectural purposes.

This communication is not intended to cause or induce breach of an existing agency agreement

3D IMMERSIVE
Tours Photos Floor Plans

Professionally measured by 3D Immersive Marketing Ltd.

Lead Floor Planner: *Simon Alexander*

Quality Assurance: *Francine Graham*