

Home report

240 Windward Passage, Clearwater Beach, Pinellas County,
Florida, United States, 33767, 401



Total Area: 2588 sq. ft

Floor 1: 815 sq. ft, Floor 2: 852 sq. ft, Floor 3: 921 sq. ft
Excluded: Deck 129 sq. ft, Balcony 86 sq. ft, Walls: 167 sq. ft

Property summary

 **3** Floors

 **3** Bedrooms

 **2** Bathrooms

Home report

**240 Windward Passage, Clearwater Beach, Pinellas County,
Florida, United States, 33767, 401**

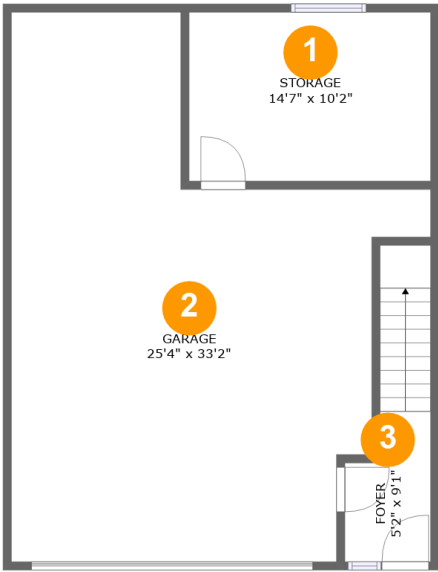


1
Half baths



1
Garages

240 Windward Passage, Clearwater Beach, Pinellas County,
Florida, United States, 33767, 401



Room dimensions

Floor 1 Total:815sqft Excluded: 0sqft

#		Max Dimensions	sqft	Included
1	Storage	14'7" x 10'2"	149 sq. ft	Yes
2	Garage	25'4" x 33'2"	595 sq. ft	Yes
3	Foyer	5'2" x 9'1"	71 sq. ft	Yes

240 Windward Passage, Clearwater Beach, Pinellas County,
Florida, United States, 33767, 401

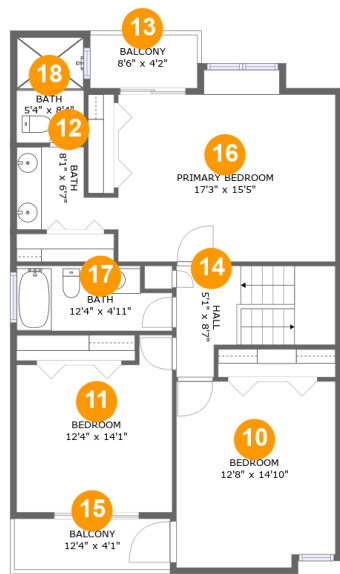


Room dimensions

Floor 2 Total:852sqft Excluded: 129sqft

#		Max Dimensions	sqft	Included
4	Living Room	13'8" x 19'10"	272 sq. ft	Yes
5	Laundry	8'0" x 7'1"	57 sq. ft	Yes
6	WC	4'9" x 5'7"	27 sq. ft	Yes
7	Deck	14'6" x 10'5"	129 sq. ft	No
8	Kitchen	16'11" x 13'4"	214 sq. ft	Yes
9	Dining Area	11'7" x 21'10"	261 sq. ft	Yes

240 Windward Passage, Clearwater Beach, Pinellas County,
Florida, United States, 33767, 401



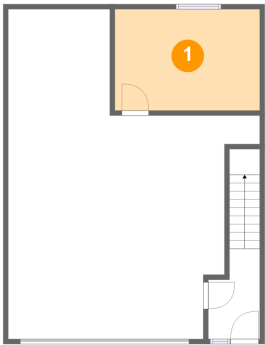
Room dimensions

Floor 3 Total:921sqft Excluded: 86sqft

#		Max Dimensions	sqft	Included
10	Bedroom	12'8" x 14'10"	183 sq. ft	Yes
11	Bedroom	12'4" x 14'1"	151 sq. ft	Yes
12	Bath	8'1" x 6'7"	42 sq. ft	Yes
13	Balcony	8'6" x 4'2"	36 sq. ft	No
14	Hall	5'1" x 8'7"	84 sq. ft	Yes
15	Balcony	12'4" x 4'1"	50 sq. ft	No
16	Primary Bedroom	17'3" x 15'5"	245 sq. ft	Yes
17	Bath	12'4" x 4'11"	56 sq. ft	Yes
18	Bath	5'4" x 8'4"	45 sq. ft	Yes

240 Windward Passage, Clearwater Beach, Pinellas County,
Florida, United States, 33767, 401

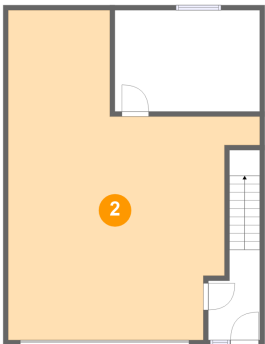
1 Floor 1 - Storage



Max Dimensions: 14'7" x 10'2"
Calculated Area: 149 sq. ft
Included: No

Heated: No
Finished: Yes
Enclosed: Yes
Contiguous: Yes
Permitted: Yes
Wet space: No
Addition: No
Conversion: No

2 Floor 1 - Garage

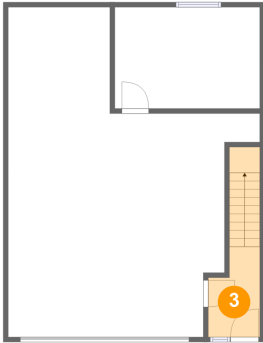


Max Dimensions: 25'4" x 33'2"
Calculated Area: 595 sq. ft
Included: No

Heated: No
Finished: Yes
Enclosed: Yes
Contiguous: Yes
Permitted: Yes
Wet space: No
Addition: No
Conversion: No

240 Windward Passage, Clearwater Beach, Pinellas County,
Florida, United States, 33767, 401

3 Floor 1 - Foyer



Max Dimensions: 5'2" x 9'1"
Calculated Area: 71 sq. ft
Included: No

Heated: Yes
Finished: Yes
Enclosed: Yes
Contiguous: No
Permitted: Yes
Wet space: No
Addition: No
Conversion: No

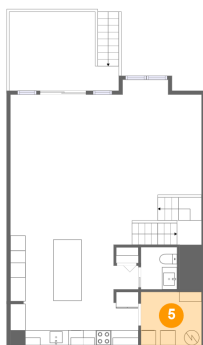
4 Floor 2 - Living Room



Max Dimensions: 13'8" x 19'10"
Calculated Area: 272 sq. ft
Included: Yes

Heated: Yes
Finished: Yes
Enclosed: Yes
Contiguous: Yes
Permitted: Yes
Wet space: No
Addition: No
Conversion: No

5 Floor 2 - Laundry



Max Dimensions: 8'0" x 7'1"
Calculated Area: 57 sq. ft
Included: Yes

Heated: Yes
Finished: Yes
Enclosed: Yes
Contiguous: Yes
Permitted: Yes
Wet space: No
Addition: No
Conversion: No

240 Windward Passage, Clearwater Beach, Pinellas County,
Florida, United States, 33767, 401

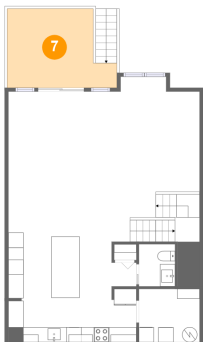
6 Floor 2 - WC



Max Dimensions: 4'9" x 5'7"
Calculated Area: 27 sq. ft
Included: Yes

Heated: Yes
Finished: Yes
Enclosed: Yes
Contiguous: Yes
Permitted: Yes
Wet space: Yes
Addition: No
Conversion: No

7 Floor 2 - Deck



Max Dimensions: 14'6" x 10'5"
Calculated Area: 129 sq. ft
Included: No

Heated: No
Finished: Yes
Enclosed: No
Contiguous: Yes
Permitted: Yes
Wet space: No
Addition: No
Conversion: No

8 Floor 2 - Kitchen

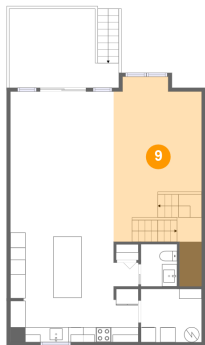


Max Dimensions: 16'11" x 13'4"
Calculated Area: 214 sq. ft
Included: Yes

Heated: Yes
Finished: Yes
Enclosed: Yes
Contiguous: Yes
Permitted: Yes
Wet space: No
Addition: No
Conversion: No

240 Windward Passage, Clearwater Beach, Pinellas County,
Florida, United States, 33767, 401

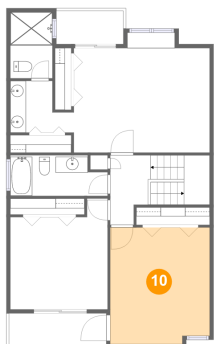
9 Floor 2 - Dining Area



Max Dimensions: 11'7" x 21'10"
Calculated Area: 261 sq. ft
Included: Yes

Heated: Yes
Finished: Yes
Enclosed: Yes
Contiguous: Yes
Permitted: Yes
Wet space: No
Addition: No
Conversion: No

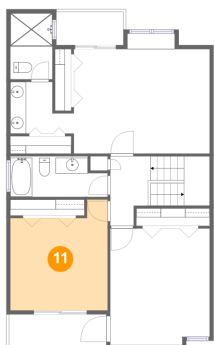
10 Floor 3 - Bedroom



Max Dimensions: 12'8" x 14'10"
Calculated Area: 183 sq. ft
Included: Yes

Heated: Yes
Finished: Yes
Enclosed: Yes
Contiguous: Yes
Permitted: Yes
Wet space: No
Addition: No
Conversion: No

11 Floor 3 - Bedroom

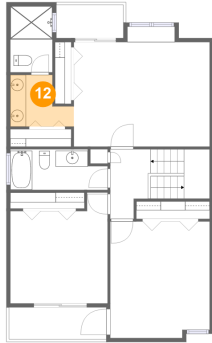


Max Dimensions: 12'4" x 14'1"
Calculated Area: 151 sq. ft
Included: Yes

Heated: Yes
Finished: Yes
Enclosed: Yes
Contiguous: Yes
Permitted: Yes
Wet space: No
Addition: No
Conversion: No

240 Windward Passage, Clearwater Beach, Pinellas County,
Florida, United States, 33767, 401

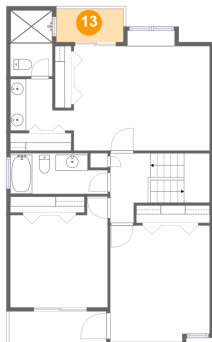
12 Floor 3 - Bath



Max Dimensions: 8'1" x 6'7"
Calculated Area: 42 sq. ft
Included: Yes

Heated: Yes
Finished: Yes
Enclosed: Yes
Contiguous: Yes
Permitted: Yes
Wet space: Yes
Addition: No
Conversion: No

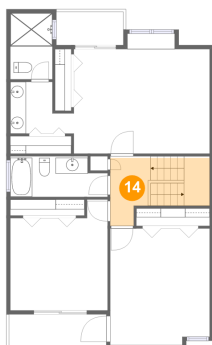
13 Floor 3 - Balcony



Max Dimensions: 8'6" x 4'2"
Calculated Area: 36 sq. ft
Included: No

Heated: No
Finished: Yes
Enclosed: No
Contiguous: Yes
Permitted: Yes
Wet space: No
Addition: No
Conversion: No

14 Floor 3 - Hall

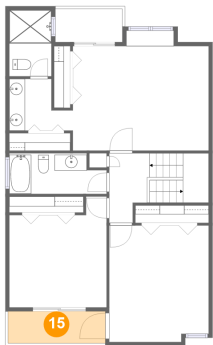


Max Dimensions: 5'1" x 8'7"
Calculated Area: 84 sq. ft
Included: Yes

Heated: Yes
Finished: Yes
Enclosed: Yes
Contiguous: Yes
Permitted: Yes
Wet space: No
Addition: No
Conversion: No

240 Windward Passage, Clearwater Beach, Pinellas County,
Florida, United States, 33767, 401

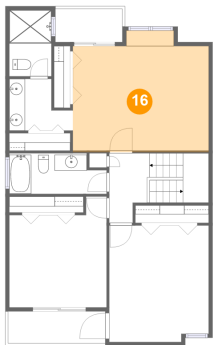
15 Floor 3 - Balcony



Max Dimensions: 12'4" x 4'1"
Calculated Area: 50 sq. ft
Included: No

Heated: No
Finished: Yes
Enclosed: No
Contiguous: Yes
Permitted: Yes
Wet space: No
Addition: No
Conversion: No

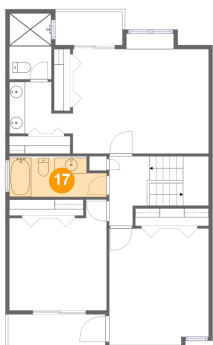
16 Floor 3 - Primary Bedroom



Max Dimensions: 17'3" x 15'5"
Calculated Area: 245 sq. ft
Included: Yes

Heated: Yes
Finished: Yes
Enclosed: Yes
Contiguous: Yes
Permitted: Yes
Wet space: No
Addition: No
Conversion: No

17 Floor 3 - Bath

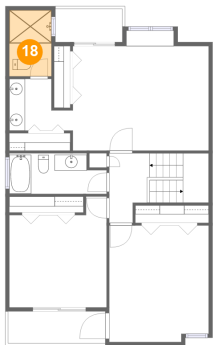


Max Dimensions: 12'4" x 4'11"
Calculated Area: 56 sq. ft
Included: Yes

Heated: Yes
Finished: Yes
Enclosed: Yes
Contiguous: Yes
Permitted: Yes
Wet space: Yes
Addition: No
Conversion: No

240 Windward Passage, Clearwater Beach, Pinellas County,
Florida, United States, 33767, 401

18 Floor 3 - Bath



Max Dimensions: 5'4" x 8'4"
Calculated Area: 45 sq. ft
Included: Yes

Heated: Yes
Finished: Yes
Enclosed: Yes
Contiguous: Yes
Permitted: Yes
Wet space: Yes
Addition: No
Conversion: No