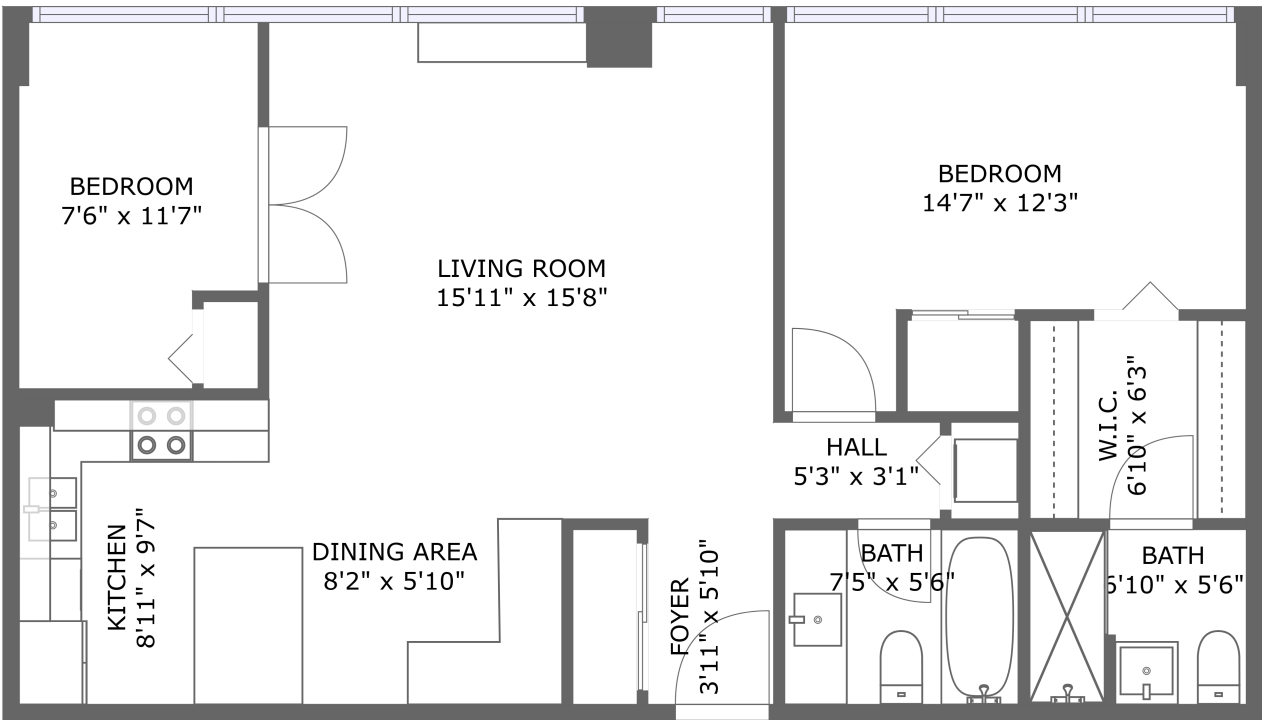


Home report

500 Laurier Avenue West, Centretown, Ottawa, Ontario, Canada,
K1R 5E1, 2403




FLOOR 1

Total Area: 831 sq. ft

Floor 1: 831 sq. ft
Excluded: Walls: 61 sq. ft

Property summary

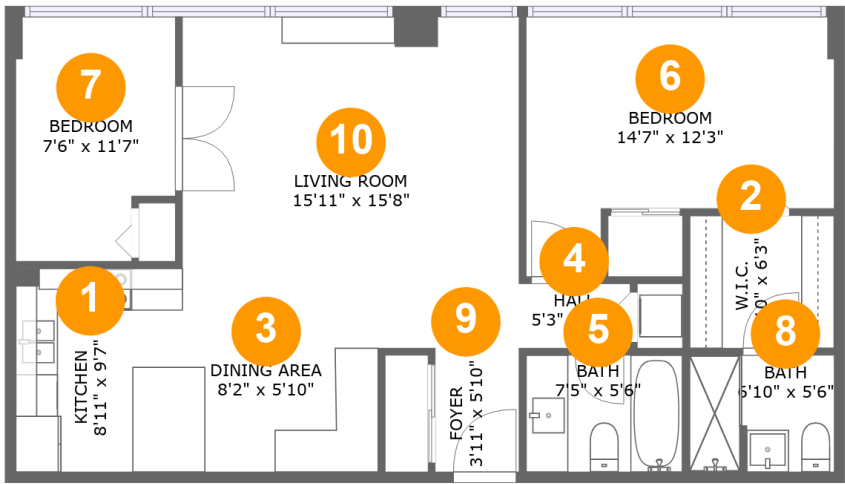
 **1** Floors

 **2** Bedrooms

 **2** Bathrooms

Home report

500 Laurier Avenue West, Centretown, Ottawa, Ontario, Canada,
K1R 5E1, 2403



Room dimensions

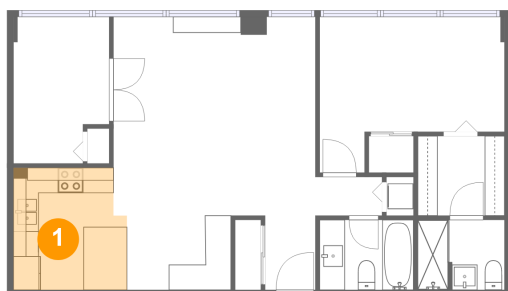
Floor 1 Total:831sqft Excluded: 0sqft

#		Max Dimensions	sqft	Included
1	Kitchen	8'11" x 9'7"	82 sq. ft	Yes
2	W.I.C.	6'10" x 6'3"	43 sq. ft	Yes
3	Dining Area	8'2" x 5'10"	48 sq. ft	Yes
4	Hall	5'3" x 3'1"	16 sq. ft	Yes
5	Bath	7'5" x 5'6"	41 sq. ft	Yes
6	Bedroom	14'7" x 12'3"	143 sq. ft	Yes
7	Bedroom	7'6" x 11'7"	81 sq. ft	Yes
8	Bath	6'10" x 5'6"	37 sq. ft	Yes
9	Foyer	3'11" x 5'10"	23 sq. ft	Yes
10	Living Room	15'11" x 15'8"	249 sq. ft	Yes

Home report

500 Laurier Avenue West, Centretown, Ottawa, Ontario, Canada,
K1R 5E1, 2403

1 Floor 1 - Kitchen



Max Dimensions: 8'11" x 9'7"

Calculated Area: 82 sq. ft

Included: Yes

Heated: Yes

Finished: Yes

Enclosed: Yes

Contiguous:
Yes

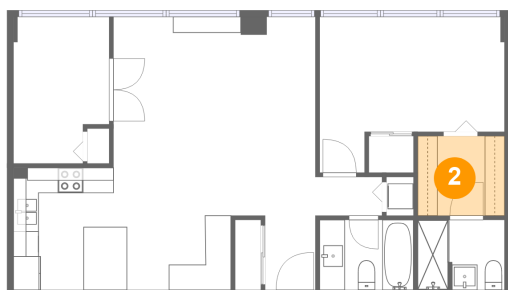
Permitted: Yes

Wet space: No

Addition: No

Conversion: No

2 Floor 1 - W.I.C.



Max Dimensions: 6'10" x 6'3"

Calculated Area: 43 sq. ft

Included: Yes

Heated: Yes

Finished: Yes

Enclosed: Yes

Contiguous:
Yes

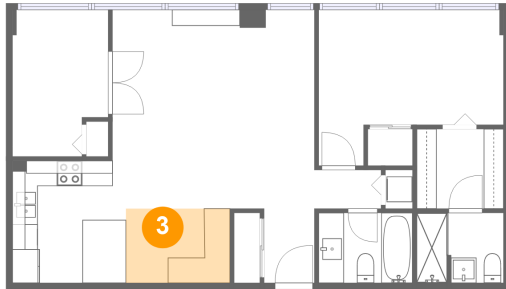
Permitted: Yes

Wet space: No

Addition: No

Conversion: No

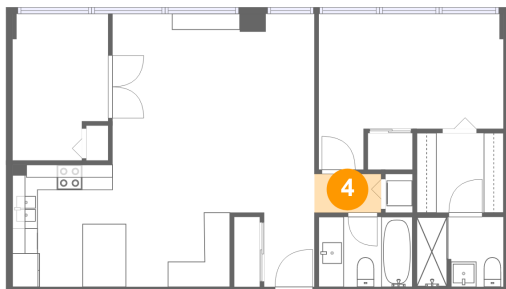
3 Floor 1 - Dining Area



Max Dimensions: 8'2" x 5'10"
Calculated Area: 48 sq. ft
Included: Yes

Heated: Yes
Finished: Yes
Enclosed: Yes
Contiguous: Yes
Permitted: Yes
Wet space: No
Addition: No
Conversion: No

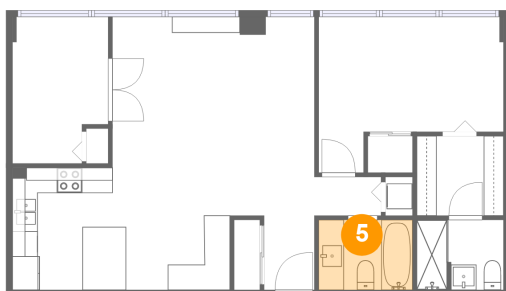
4 Floor 1 - Hall



Max Dimensions: 5'3" x 3'1"
Calculated Area: 16 sq. ft
Included: Yes

Heated: Yes
Finished: Yes
Enclosed: Yes
Contiguous: Yes
Permitted: Yes
Wet space: No
Addition: No
Conversion: No

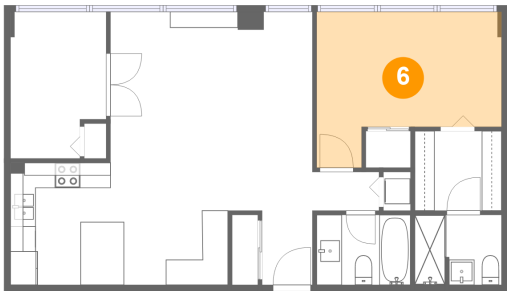
5 Floor 1 - Bath



Max Dimensions: 7'5" x 5'6"
Calculated Area: 41 sq. ft
Included: Yes

Heated: Yes
Finished: Yes
Enclosed: Yes
Contiguous: Yes
Permitted: Yes
Wet space: Yes
Addition: No
Conversion: No

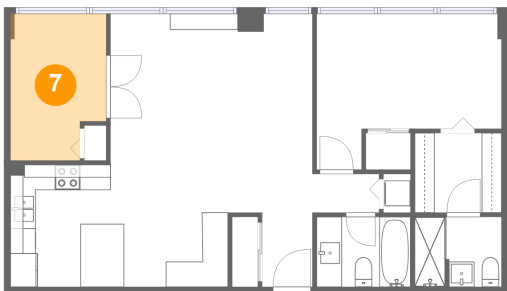
6 Floor 1 - Bedroom



Max Dimensions: 14'7" x 12'3"
Calculated Area: 143 sq. ft
Included: Yes

Heated: Yes
Finished: Yes
Enclosed: Yes
Contiguous: Yes
Permitted: Yes
Wet space: No
Addition: No
Conversion: No

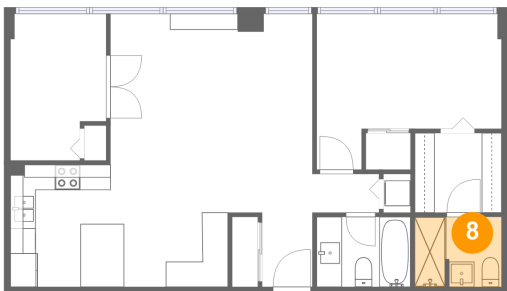
7 Floor 1 - Bedroom



Max Dimensions: 7'6" x 11'7"
Calculated Area: 81 sq. ft
Included: Yes

Heated: Yes
Finished: Yes
Enclosed: Yes
Contiguous: Yes
Permitted: Yes
Wet space: No
Addition: No
Conversion: No

8 Floor 1 - Bath

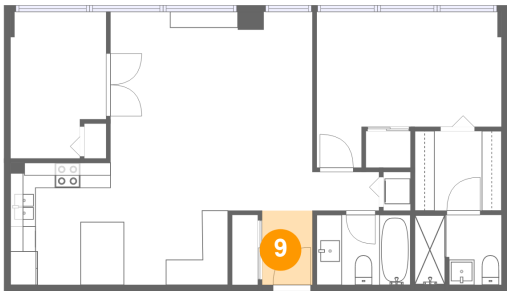


Max Dimensions: 6'10" x 5'6"
Calculated Area: 37 sq. ft
Included: Yes

Heated: Yes
Finished: Yes
Enclosed: Yes
Contiguous: Yes
Permitted: Yes
Wet space: Yes
Addition: No
Conversion: No

500 Laurier Avenue West, Centretown, Ottawa, Ontario, Canada,
K1R 5E1, 2403

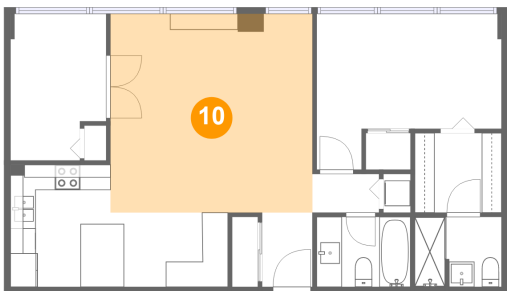
9 Floor 1 - Foyer



Max Dimensions: 3'11" x 5'10"
Calculated Area: 23 sq. ft
Included: Yes

Heated: Yes
Finished: Yes
Enclosed: Yes
Contiguous: Yes
Permitted: Yes
Wet space: No
Addition: No
Conversion: No

10 Floor 1 - Living Room



Max Dimensions: 15'11" x 15'8"
Calculated Area: 249 sq. ft
Included: Yes

Heated: Yes
Finished: Yes
Enclosed: Yes
Contiguous: Yes
Permitted: Yes
Wet space: No
Addition: No
Conversion: No