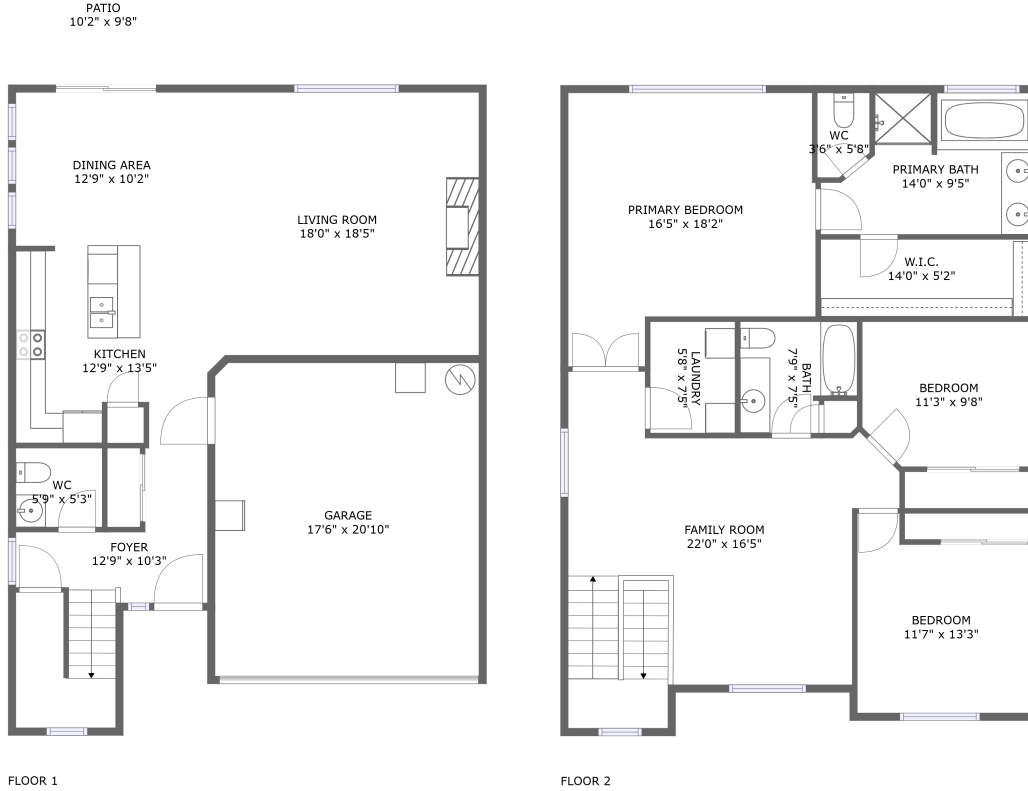


# 438 Oak Leaf Street, Newberg, Yamhill County, Oregon, United States, 97132



## Property Summary

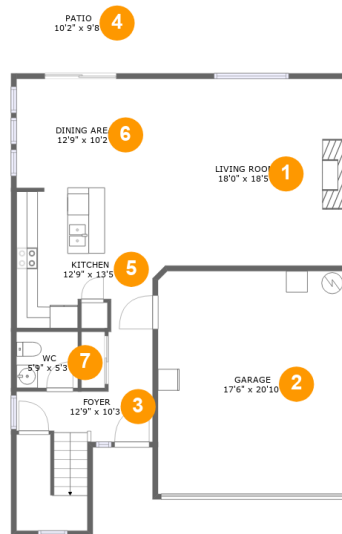
 **1** garages     **3** bedrooms     **2** bathrooms     **1** half baths

 **2** floors

 **2,200** Gross Living Area sqft

 **2,684** total sqft

# 438 Oak Leaf Street, Newberg, Yamhill County, Oregon, United States, 97132



## Room Dimensions

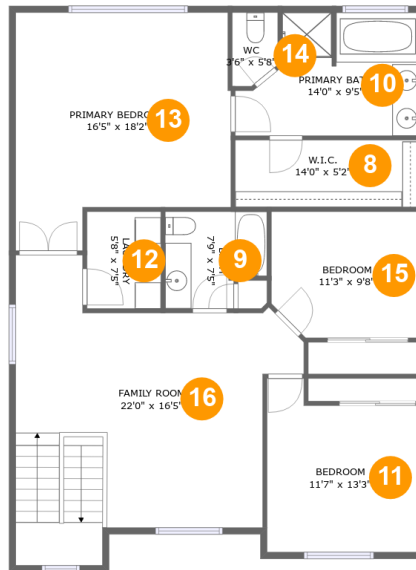
Floor 1

Total sqft: 1359

Living area: 875

#	Room name	Dimensions	Area (sqft)	Counted as Living Area
1	Living Room	18'0" x 18'5"	315 sq. ft	Yes
2	Garage	17'6" x 20'10"	364 sq. ft	No
3	Foyer	12'9" x 10'3"	135 sq. ft	Yes
4	Patio	10'2" x 9'8"	98 sq. ft	No
5	Kitchen	12'9" x 13'5"	159 sq. ft	Yes
6	Dining Area	12'9" x 10'2"	130 sq. ft	Yes
7	Wc	5'9" x 5'3"	30 sq. ft	Yes

# 438 Oak Leaf Street, Newberg, Yamhill County, Oregon, United States, 97132



## Room Dimensions

Floor 2

Total sqft: 1325

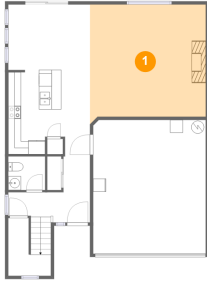
Living area: 1325

#	Room name	Dimensions	Area (sqft)	Counted as Living Area
8	W.i.c.	14'0" x 5'2"	72 sq. ft	Yes
9	Bath	7'9" x 7'5"	51 sq. ft	Yes
10	Primary Bath	14'0" x 9'5"	111 sq. ft	Yes
11	Bedroom	11'7" x 13'3"	135 sq. ft	Yes
12	Laundry	5'8" x 7'5"	42 sq. ft	Yes
13	Primary Bedroom	16'5" x 18'2"	260 sq. ft	Yes
14	Wc	3'6" x 5'8"	18 sq. ft	Yes
15	Bedroom	11'3" x 9'8"	105 sq. ft	Yes
16	Family Room	22'0" x 16'5"	363 sq. ft	Yes

# 438 Oak Leaf Street, Newberg, Yamhill County, Oregon, United States, 97132

## 1 Floor 1 - Living Room

---

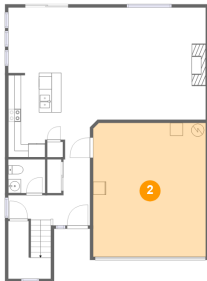


Dimensions: 18'0" x 18'5"  
Area: 315 sq. ft  
Counted as Living Area:  
Yes

Heated: Yes  
Finished: Yes  
Enclosed: Yes  
Contiguous:  
Yes  
Permitted: Yes  
Wet Space: No  
Addition: No  
Conversion: No

## 2 Floor 1 - Garage

---

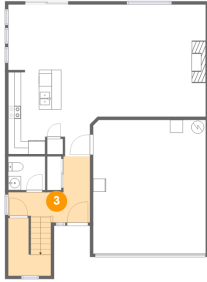


Dimensions: 17'6" x 20'10"  
Area: 364 sq. ft  
Counted as Living Area: No

Heated: No  
Finished: No  
Enclosed: Yes  
Contiguous: Yes  
Permitted: Yes  
Wet Space: No  
Addition: No  
Conversion: No

# 438 Oak Leaf Street, Newberg, Yamhill County, Oregon, United States, 97132

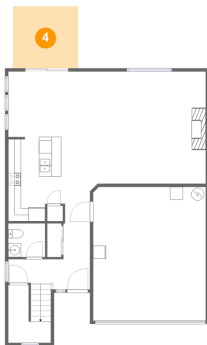
## 3 Floor 1 - Foyer



Dimensions: 12'9" x 10'3"  
Area: 135 sq. ft  
Counted as Living Area:  
Yes

Heated: Yes  
Finished: Yes  
Enclosed: Yes  
Contiguous:  
Yes  
Permitted: Yes  
Wet Space: No  
Addition: No  
Conversion: No

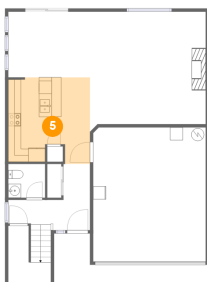
## 4 Floor 1 - Patio



Dimensions: 10'2" x 9'8"  
Area: 98 sq. ft  
Counted as Living Area: No

Heated: No  
Finished: Yes  
Enclosed: No  
Contiguous: Yes  
Permitted: Yes  
Wet Space: No  
Addition: No  
Conversion: No

## 5 Floor 1 - Kitchen

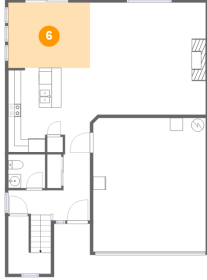


Dimensions: 12'9" x 13'5"  
Area: 159 sq. ft  
Counted as Living Area:  
Yes

Heated: Yes  
Finished: Yes  
Enclosed: Yes  
Contiguous:  
Yes  
Permitted: Yes  
Wet Space: No  
Addition: No  
Conversion: No

# 438 Oak Leaf Street, Newberg, Yamhill County, Oregon, United States, 97132

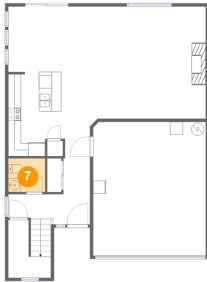
## 6 Floor 1 - Dining Area



Dimensions: 12'9" x 10'2"  
Area: 130 sq. ft  
Counted as Living Area:  
Yes

Heated: Yes  
Finished: Yes  
Enclosed: Yes  
Contiguous:  
Yes  
Permitted: Yes  
Wet Space: No  
Addition: No  
Conversion: No

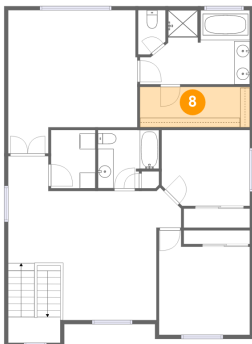
## 7 Floor 1 - Wc



Dimensions: 5'9" x 5'3"  
Area: 30 sq. ft  
Counted as Living Area:  
Yes

Heated: Yes  
Finished: Yes  
Enclosed: Yes  
Contiguous:  
Yes  
Permitted: Yes  
Wet Space: Yes  
Addition: No  
Conversion: No

## 8 Floor 2 - W.i.c.

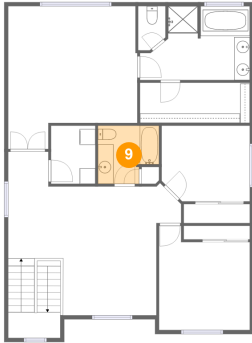


Dimensions: 14'0" x 5'2"  
Area: 72 sq. ft  
Counted as Living Area:  
Yes

Heated: Yes  
Finished: Yes  
Enclosed: Yes  
Contiguous:  
Yes  
Permitted: Yes  
Wet Space: No  
Addition: No  
Conversion: No

# 438 Oak Leaf Street, Newberg, Yamhill County, Oregon, United States, 97132

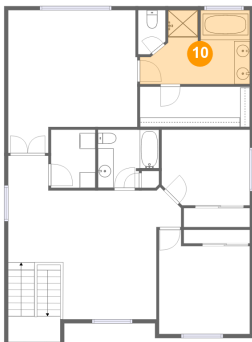
## 9 Floor 2 - Bath



Dimensions: 7'9" x 7'5"  
Area: 51 sq. ft  
Counted as Living Area:  
Yes

Heated: Yes  
Finished: Yes  
Enclosed: Yes  
Contiguous:  
Yes  
Permitted: Yes  
Wet Space: Yes  
Addition: No  
Conversion: No

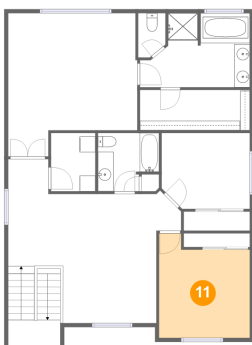
## 10 Floor 2 - Primary Bath



Dimensions: 14'0" x 9'5"  
Area: 111 sq. ft  
Counted as Living Area:  
Yes

Heated: Yes  
Finished: Yes  
Enclosed: Yes  
Contiguous:  
Yes  
Permitted: Yes  
Wet Space: Yes  
Addition: No  
Conversion: No

## 11 Floor 2 - Bedroom

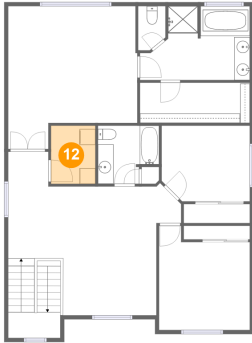


Dimensions: 11'7" x 13'3"  
Area: 135 sq. ft  
Counted as Living Area:  
Yes

Heated: Yes  
Finished: Yes  
Enclosed: Yes  
Contiguous:  
Yes  
Permitted: Yes  
Wet Space: No  
Addition: No  
Conversion: No

# 438 Oak Leaf Street, Newberg, Yamhill County, Oregon, United States, 97132

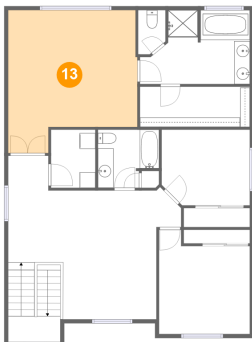
## 12 Floor 2 - Laundry



Dimensions: 5'8" x 7'5"  
Area: 42 sq. ft  
Counted as Living Area:  
Yes

Heated: Yes  
Finished: Yes  
Enclosed: Yes  
Contiguous:  
Yes  
Permitted: Yes  
Wet Space: No  
Addition: No  
Conversion: No

## 13 Floor 2 - Primary Bedroom



Dimensions: 16'5" x 18'2"  
Area: 260 sq. ft  
Counted as Living Area:  
Yes

Heated: Yes  
Finished: Yes  
Enclosed: Yes  
Contiguous:  
Yes  
Permitted: Yes  
Wet Space: No  
Addition: No  
Conversion: No

## 14 Floor 2 - Wc



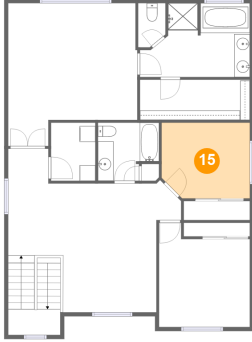
Dimensions: 3'6" x 5'8"  
Area: 18 sq. ft  
Counted as Living Area:  
Yes

Heated: Yes  
Finished: Yes  
Enclosed: Yes  
Contiguous:  
Yes  
Permitted: Yes  
Wet Space: Yes  
Addition: No  
Conversion: No



# 438 Oak Leaf Street, Newberg, Yamhill County, Oregon, United States, 97132

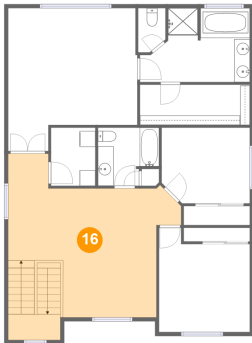
## 15 Floor 2 - Bedroom



Dimensions: 11'3" x 9'8"  
Area: 105 sq. ft  
Counted as Living Area:  
Yes

Heated: Yes  
Finished: Yes  
Enclosed: Yes  
Contiguous:  
Yes  
Permitted: Yes  
Wet Space: No  
Addition: No  
Conversion: No

## 16 Floor 2 - Family Room



Dimensions: 22'0" x 16'5"  
Area: 363 sq. ft  
Counted as Living Area:  
Yes

Heated: Yes  
Finished: Yes  
Enclosed: Yes  
Contiguous:  
Yes  
Permitted: Yes  
Wet Space: No  
Addition: No  
Conversion: No