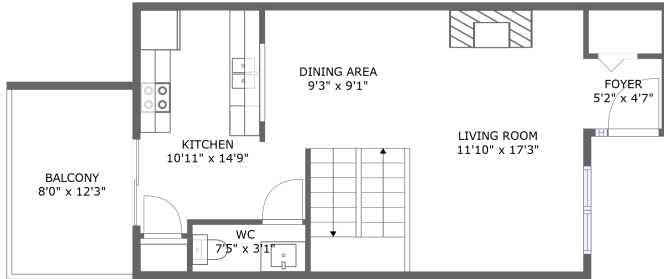
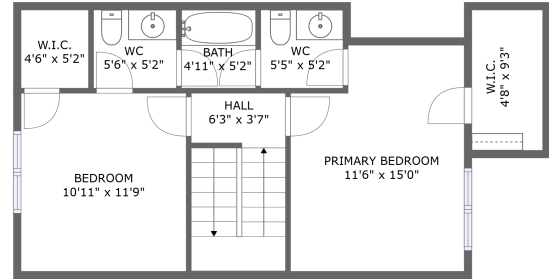


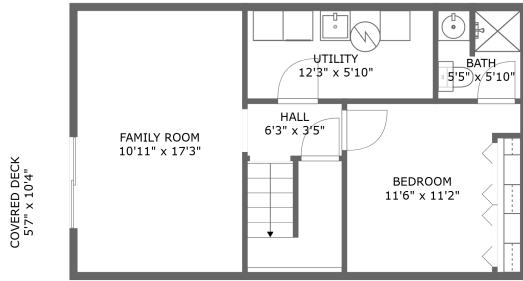
# 3400 Morning Dove Road, Cave Spring, Roanoke, Roanoke County, Virginia, United States, 24018



FLOOR 2



FLOOR 3



FLOOR 1

## Property summary


 **0** Garages

 **3** Bedrooms

 **2** Bathrooms

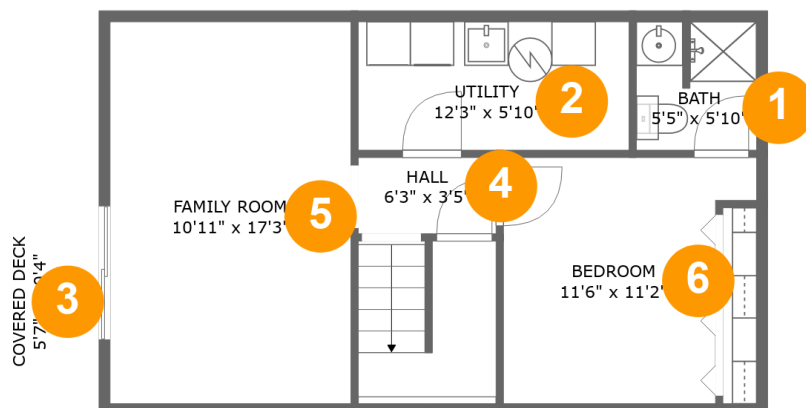
 **1** Half baths

 **3** Floors

 **1,630** Gross living area sqft

 **1,860** Total sqft

# 3400 Morning Dove Road, Cave Spring, Roanoke, Roanoke County, Virginia, United States, 24018



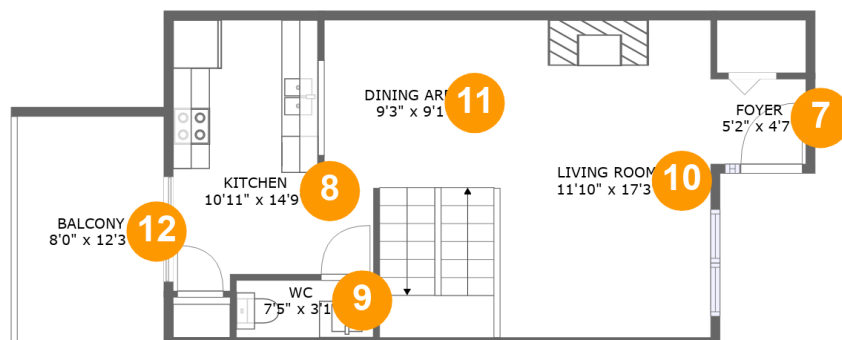
## Room dimensions

Floor 1

Total sqft: 597 Living area: 465

#		Dimensions	sqft	Counted as living area
1	Bath	5'5" x 5'10"	31 sq. ft	Yes
2	Utility	12'3" x 5'10"	71 sq. ft	No
3	Covered Deck	5'7" x 10'4"	58 sq. ft	No
4	Hall	6'3" x 3'5"	22 sq. ft	Yes
5	Family Room	10'11" x 17'3"	189 sq. ft	Yes
6	Bedroom	11'6" x 11'2"	111 sq. ft	Yes

# 3400 Morning Dove Road, Cave Spring, Roanoke, Roanoke County, Virginia, United States, 24018



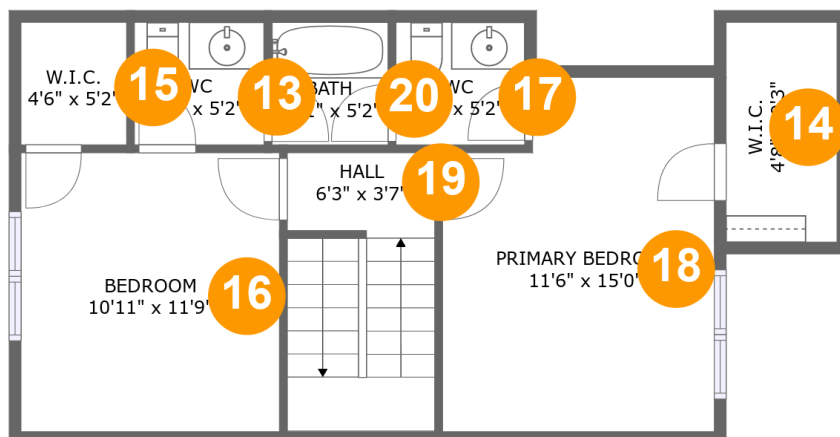
## Room dimensions

Floor 2

Total sqft: 686 Living area: 588

#		Dimensions	sqft	Counted as living area
7	Foyer	5'2" x 4'7"	24 sq. ft	Yes
8	Kitchen	10'11" x 14'9"	129 sq. ft	Yes
9	WC	7'5" x 3'1"	23 sq. ft	Yes
10	Living Room	11'10" x 17'3"	204 sq. ft	Yes
11	Dining Area	9'3" x 9'1"	136 sq. ft	Yes
12	Balcony	8'0" x 12'3"	98 sq. ft	No

# 3400 Morning Dove Road, Cave Spring, Roanoke, Roanoke County, Virginia, United States, 24018



## Room dimensions

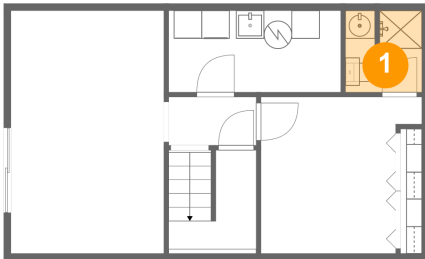
Floor 3

Total sqft: 577 Living area: 577

#		Dimensions	sqft	Counted as living area
13	WC	5'6" x 5'2"	28 sq. ft	Yes
14	W.I.C.	4'8" x 9'3"	43 sq. ft	Yes
15	W.I.C.	4'6" x 5'2"	23 sq. ft	Yes
16	Bedroom	10'11" x 11'9"	129 sq. ft	Yes
17	WC	5'5" x 5'2"	28 sq. ft	Yes
18	Primary Bedroom	11'6" x 15'0"	160 sq. ft	Yes
19	Hall	6'3" x 3'7"	72 sq. ft	Yes
20	Bath	4'11" x 5'2"	25 sq. ft	Yes

# 3400 Morning Dove Road, Cave Spring, Roanoke, Roanoke County, Virginia, United States, 24018

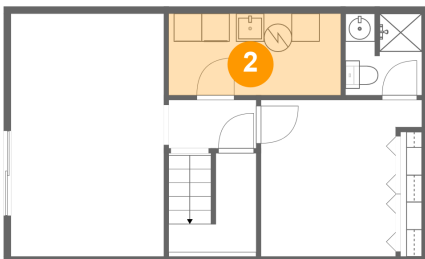
## 1 Floor 1 - Bath



Dimensions: 5'5" x 5'10"  
Area: 31 sq. ft  
Counted as living area: Yes

Heated: Yes  
Finished: Yes  
Enclosed: Yes  
Contiguous: Yes  
Permitted: Yes  
Wet space: Yes  
Addition: No  
Conversion: No

## 2 Floor 1 - Utility

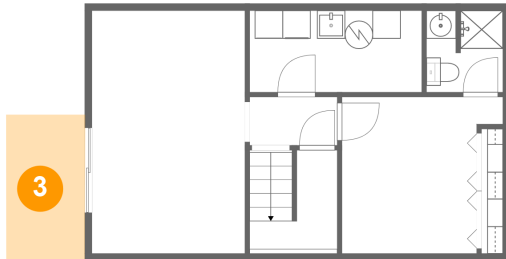


Dimensions: 12'3" x 5'10"  
Area: 71 sq. ft  
Counted as living area: No

Heated: Yes  
Finished: No  
Enclosed: Yes  
Contiguous: Yes  
Permitted: Yes  
Wet space: No  
Addition: No  
Conversion: No

# 3400 Morning Dove Road, Cave Spring, Roanoke, Roanoke County, Virginia, United States, 24018

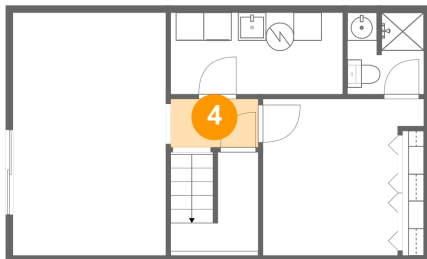
## 3 Floor 1 - Covered Deck



Dimensions: 5'7" x 10'4"  
Area: 58 sq. ft  
Counted as living area: No

Heated: No  
Finished: Yes  
Enclosed: No  
Contiguous: Yes  
Permitted: Yes  
Wet space: No  
Addition: No  
Conversion: No

## 4 Floor 1 - Hall



Dimensions: 6'3" x 3'5"  
Area: 22 sq. ft  
Counted as living area: Yes

Heated: Yes  
Finished: Yes  
Enclosed: Yes  
Contiguous: Yes  
Permitted: Yes  
Wet space: No  
Addition: No  
Conversion: No

## 5 Floor 1 - Family Room



Dimensions: 10'11" x 17'3"  
Area: 189 sq. ft  
Counted as living area: Yes

Heated: Yes  
Finished: Yes  
Enclosed: Yes  
Contiguous: Yes  
Permitted: Yes  
Wet space: No  
Addition: No  
Conversion: No

# 3400 Morning Dove Road, Cave Spring, Roanoke, Roanoke County, Virginia, United States, 24018

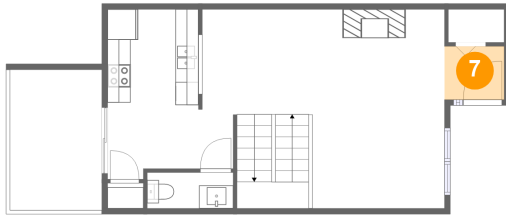
## 6 Floor 1 - Bedroom



Dimensions: 11'6" x 11'2"  
Area: 111 sq. ft  
Counted as living area: Yes

Heated: Yes  
Finished: Yes  
Enclosed: Yes  
Contiguous: Yes  
Permitted: Yes  
Wet space: No  
Addition: No  
Conversion: No

## 7 Floor 2 - Foyer



Dimensions: 5'2" x 4'7"  
Area: 24 sq. ft  
Counted as living area: Yes

Heated: Yes  
Finished: Yes  
Enclosed: Yes  
Contiguous: Yes  
Permitted: Yes  
Wet space: No  
Addition: No  
Conversion: No

## 8 Floor 2 - Kitchen



Dimensions: 10'11" x 14'9"  
Area: 129 sq. ft  
Counted as living area: Yes

Heated: Yes  
Finished: Yes  
Enclosed: Yes  
Contiguous: Yes  
Permitted: Yes  
Wet space: No  
Addition: No  
Conversion: No

# 3400 Morning Dove Road, Cave Spring, Roanoke, Roanoke County, Virginia, United States, 24018

## 9 Floor 2 - WC



Dimensions: 7'5" x 3'1"  
Area: 23 sq. ft  
Counted as living area: Yes

Heated: Yes  
Finished: Yes  
Enclosed: Yes  
Contiguous: Yes  
Permitted: Yes  
Wet space: Yes  
Addition: No  
Conversion: No

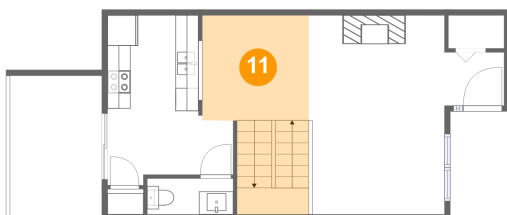
## 10 Floor 2 - Living Room



Dimensions: 11'10" x 17'3"  
Area: 204 sq. ft  
Counted as living area: Yes

Heated: Yes  
Finished: Yes  
Enclosed: Yes  
Contiguous: Yes  
Permitted: Yes  
Wet space: No  
Addition: No  
Conversion: No

## 11 Floor 2 - Dining Area



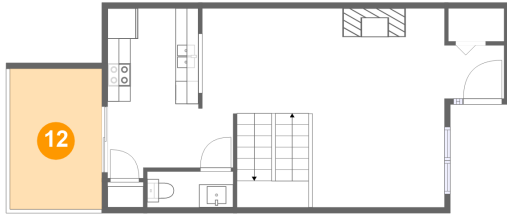
Dimensions: 9'3" x 9'1"  
Area: 136 sq. ft  
Counted as living area: Yes

Heated: Yes  
Finished: Yes  
Enclosed: Yes  
Contiguous: Yes  
Permitted: Yes  
Wet space: No  
Addition: No  
Conversion: No



# 3400 Morning Dove Road, Cave Spring, Roanoke, Roanoke County, Virginia, United States, 24018

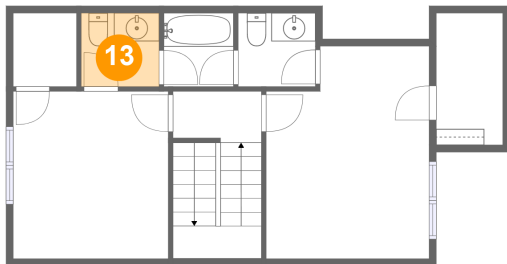
## 12 Floor 2 - Balcony



Dimensions: 8'0" x 12'3"  
Area: 98 sq. ft  
Counted as living area: No

Heated: No  
Finished: Yes  
Enclosed: No  
Contiguous: Yes  
Permitted: Yes  
Wet space: No  
Addition: No  
Conversion: No

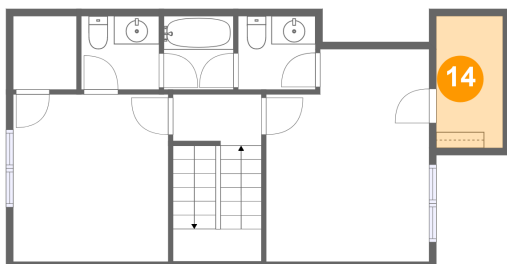
## 13 Floor 3 - WC



Dimensions: 5'6" x 5'2"  
Area: 28 sq. ft  
Counted as living area: Yes

Heated: Yes  
Finished: Yes  
Enclosed: Yes  
Contiguous: Yes  
Permitted: Yes  
Wet space: Yes  
Addition: No  
Conversion: No

## 14 Floor 3 - W.I.C.

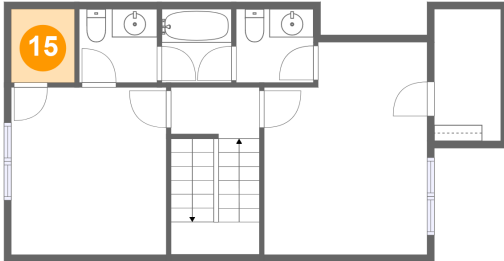


Dimensions: 4'8" x 9'3"  
Area: 43 sq. ft  
Counted as living area: Yes

Heated: Yes  
Finished: Yes  
Enclosed: Yes  
Contiguous: Yes  
Permitted: Yes  
Wet space: No  
Addition: No  
Conversion: No

**3400 Morning Dove Road, Cave Spring, Roanoke,  
Roanoke County, Virginia, United States, 24018**

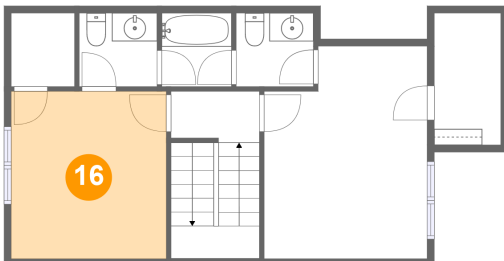
**15 Floor 3 - W.I.C.**



Dimensions: 4'6" x 5'2"  
Area: 23 sq. ft  
Counted as living area: Yes

Heated: Yes  
Finished: Yes  
Enclosed: Yes  
Contiguous: Yes  
Permitted: Yes  
Wet space: No  
Addition: No  
Conversion: No

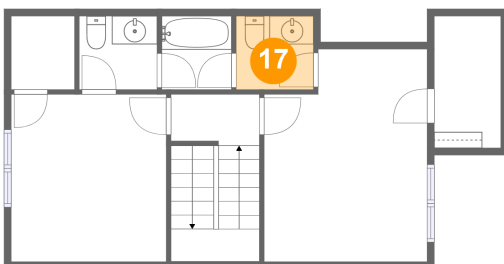
**16 Floor 3 - Bedroom**



Dimensions: 10'11" x 11'9"  
Area: 129 sq. ft  
Counted as living area: Yes

Heated: Yes  
Finished: Yes  
Enclosed: Yes  
Contiguous: Yes  
Permitted: Yes  
Wet space: No  
Addition: No  
Conversion: No

**17 Floor 3 - WC**

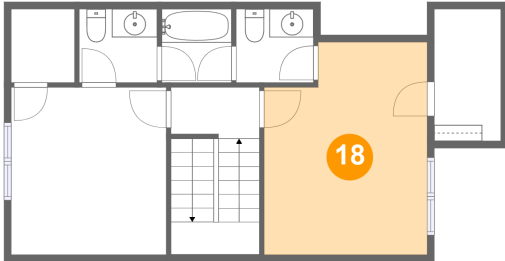


Dimensions: 5'5" x 5'2"  
Area: 28 sq. ft  
Counted as living area: Yes

Heated: Yes  
Finished: Yes  
Enclosed: Yes  
Contiguous: Yes  
Permitted: Yes  
Wet space: No  
Addition: No  
Conversion: No

**3400 Morning Dove Road, Cave Spring, Roanoke,  
Roanoke County, Virginia, United States, 24018**

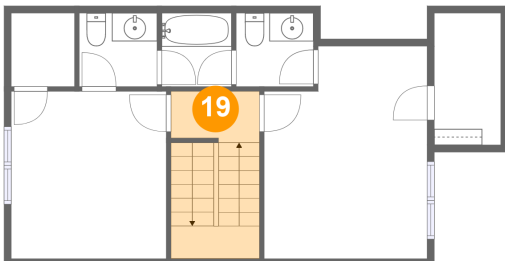
**18 Floor 3 - Primary Bedroom**



Dimensions: 11'6" x 15'0"  
Area: 160 sq. ft  
Counted as living area: Yes

Heated: Yes  
Finished: Yes  
Enclosed: Yes  
Contiguous: Yes  
Permitted: Yes  
Wet space: No  
Addition: No  
Conversion: No

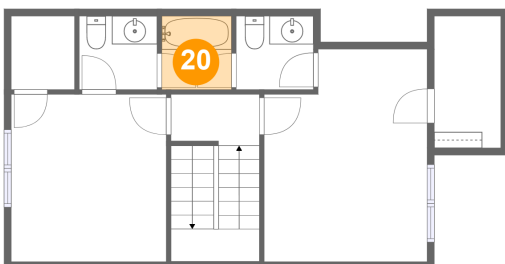
**19 Floor 3 - Hall**



Dimensions: 6'3" x 3'7"  
Area: 72 sq. ft  
Counted as living area: Yes

Heated: Yes  
Finished: Yes  
Enclosed: Yes  
Contiguous: Yes  
Permitted: Yes  
Wet space: No  
Addition: No  
Conversion: No

**20 Floor 3 - Bath**



Dimensions: 4'11" x 5'2"  
Area: 25 sq. ft  
Counted as living area: Yes

Heated: Yes  
Finished: Yes  
Enclosed: Yes  
Contiguous: Yes  
Permitted: Yes  
Wet space: Yes  
Addition: No  
Conversion: No