

Home report

2205 Gulf Boulevard, Indian Rocks Beach, Pinellas County,
Florida, United States, 33785, B



Total Area: 2903 sq. ft

Floor 1: 0 sq. ft, Floor 2: 1378 sq. ft, Floor 3: 1525 sq. ft, Floor 4: 0 sq. ft

Excluded: Elevator 125 sq. ft, Porch 199 sq. ft, Garage 1288 sq. ft, Utility 39 sq. ft, Balcony 252 sq. ft, Roof terrace 1545 sq. ft, Walls: 252 sq. ft

Property summary

**4** Floors

**4** Bedrooms

**4** Bathrooms

Home report

**2205 Gulf Boulevard, Indian Rocks Beach, Pinellas County,
Florida, United States, 33785, B**



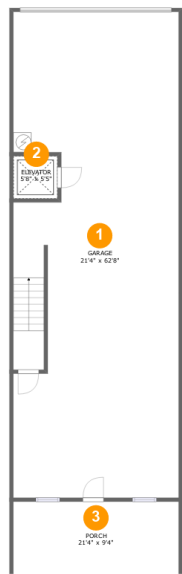
1
Half baths



1
Garages

Home report

2205 Gulf Boulevard, Indian Rocks Beach, Pinellas County,
Florida, United States, 33785, B



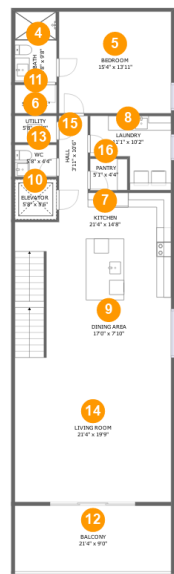
Room dimensions

Floor 1 Total:0sqft Excluded: 1518sqft

#		Max Dimensions	sqft	Included
1	Garage	21'4" x 62'8"	1288 sq. ft	No
2	Elevator	5'8" x 5'5"	31 sq. ft	No
3	Porch	21'4" x 9'4"	199 sq. ft	No

Home report

2205 Gulf Boulevard, Indian Rocks Beach, Pinellas County,
Florida, United States, 33785, B



Room dimensions

Floor 2 Total:1378sqft Excluded: 244sqft

#		Max Dimensions	sqft	Included
4	Bath	5'8" x 9'8"	55 sq. ft	Yes
5	Bedroom	15'4" x 13'11"	213 sq. ft	Yes
6	Utility	5'8" x 3'8"	21 sq. ft	No
7	Kitchen	21'4" x 14'8"	289 sq. ft	Yes
8	Laundry	11'1" x 10'2"	87 sq. ft	Yes
9	Dining Area	17'0" x 7'10"	168 sq. ft	Yes
10	Elevator	5'8" x 5'6"	31 sq. ft	No
11	W.I.C.	5'8" x 3'11"	22 sq. ft	Yes
12	Balcony	21'4" x 9'0"	192 sq. ft	No
13	WC	5'8" x 4'4"	25 sq. ft	Yes
14	Living Room	21'4" x 19'9"	421 sq. ft	Yes

Home report

**2205 Gulf Boulevard, Indian Rocks Beach, Pinellas County,
Florida, United States, 33785, B**

#		Max Dimensions	sqft	Included
15	Hall	3'11" x 10'6"	41 sq. ft	Yes
16	Pantry	5'1" x 4'4"	22 sq. ft	Yes

Home report

2205 Gulf Boulevard, Indian Rocks Beach, Pinellas County,
Florida, United States, 33785, B



Room dimensions

Floor 3 Total:1525sqft Excluded: 110sqft

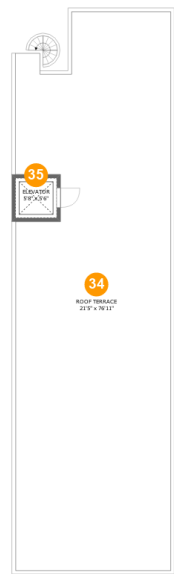
#		Max Dimensions	sqft	Included
17	Utility	4'0" x 4'6"	18 sq. ft	No
18	Hall	3'9" x 20'4"	76 sq. ft	Yes
19	W.I.C.	4'0" x 7'0"	28 sq. ft	Yes
20	WC	6'7" x 2'10"	19 sq. ft	Yes
21	Primary Bath	13'0" x 12'9"	136 sq. ft	Yes
22	Laundry	6'2" x 5'5"	33 sq. ft	Yes
23	Bath	7'10" x 8'10"	68 sq. ft	Yes
24	W.I.C.	4'0" x 6'9"	27 sq. ft	Yes
25	W.I.C.	4'10" x 8'10"	43 sq. ft	Yes
26	Primary Bedroom	21'4" x 13'8"	291 sq. ft	Yes
27	W.I.C.	13'0" x 6'11"	90 sq. ft	Yes

Home report

**2205 Gulf Boulevard, Indian Rocks Beach, Pinellas County,
Florida, United States, 33785, B**

#		Max Dimensions	sqft	Included
28	Bedroom	11'5" x 14'9"	168 sq. ft	Yes
29	Elevator	5'9" x 5'6"	32 sq. ft	No
30	Hall	9'7" x 33'11"	236 sq. ft	Yes
31	Bedroom	13'7" x 12'7"	172 sq. ft	Yes
32	Balcony	7'3" x 8'3"	60 sq. ft	No
33	Bath	9'10" x 5'5"	53 sq. ft	Yes

2205 Gulf Boulevard, Indian Rocks Beach, Pinellas County,
Florida, United States, 33785, B



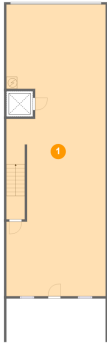
Room dimensions

Floor 4 Total:0sqft Excluded: 1576sqft

#		Max Dimensions	sqft	Included
34	Roof Terrace	21'5" x 76'11"	1545 sq. ft	No
35	Elevator	5'8" x 5'6"	31 sq. ft	No

2205 Gulf Boulevard, Indian Rocks Beach, Pinellas County,
Florida, United States, 33785, B

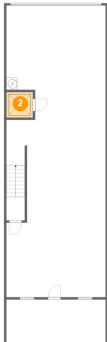
1 Floor 1 - Garage



Max Dimensions: 21'4" x 62'8"
Calculated Area: 1288 sq. ft
Included: No

Heated: No
Finished: No
Enclosed: Yes
Contiguous: Yes
Permitted: Yes
Wet space: No
Addition: No
Conversion: No

2 Floor 1 - Elevator

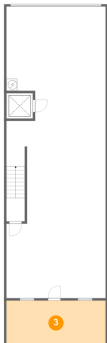


Max Dimensions: 5'8" x 5'5"
Calculated Area: 31 sq. ft
Included: No

Heated: No
Finished: No
Enclosed: Yes
Contiguous: Yes
Permitted: Yes
Wet space: No
Addition: No
Conversion: No

2205 Gulf Boulevard, Indian Rocks Beach, Pinellas County,
Florida, United States, 33785, B

3 Floor 1 - Porch



Max Dimensions: 21'4" x 9'4"
Calculated Area: 199 sq. ft
Included: No

Heated: No
Finished: Yes
Enclosed: No
Contiguous: Yes
Permitted: Yes
Wet space: No
Addition: No
Conversion: No

4 Floor 2 - Bath



Max Dimensions: 5'8" x 9'8"
Calculated Area: 55 sq. ft
Included: Yes

Heated: Yes
Finished: Yes
Enclosed: Yes
Contiguous: Yes
Permitted: Yes
Wet space: Yes
Addition: No
Conversion: No

5 Floor 2 - Bedroom



Max Dimensions: 15'4" x 13'11"
Calculated Area: 213 sq. ft
Included: Yes

Heated: Yes
Finished: Yes
Enclosed: Yes
Contiguous: Yes
Permitted: Yes
Wet space: No
Addition: No
Conversion: No

2205 Gulf Boulevard, Indian Rocks Beach, Pinellas County,
Florida, United States, 33785, B

6 Floor 2 - Utility



Max Dimensions: 5'8" x 3'8"
Calculated Area: 21 sq. ft
Included: No

Heated: Yes
Finished: No
Enclosed: Yes
Contiguous: Yes
Permitted: Yes
Wet space: No
Addition: No
Conversion: No

7 Floor 2 - Kitchen



Max Dimensions: 21'4" x 14'8"
Calculated Area: 289 sq. ft
Included: Yes

Heated: Yes
Finished: Yes
Enclosed: Yes
Contiguous: Yes
Permitted: Yes
Wet space: No
Addition: No
Conversion: No

8 Floor 2 - Laundry



Max Dimensions: 11'1" x 10'2"
Calculated Area: 87 sq. ft
Included: Yes

Heated: Yes
Finished: Yes
Enclosed: Yes
Contiguous: Yes
Permitted: Yes
Wet space: No
Addition: No
Conversion: No

9 Floor 2 - Dining Area



Max Dimensions: 17'0" x 7'10"
Calculated Area: 168 sq. ft
Included: Yes

Heated: Yes
Finished: Yes
Enclosed: Yes
Contiguous: Yes
Permitted: Yes
Wet space: No
Addition: No
Conversion: No

10 Floor 2 - Elevator



Max Dimensions: 5'8" x 5'6"
Calculated Area: 31 sq. ft
Included: No

Heated: No
Finished: No
Enclosed: Yes
Contiguous: Yes
Permitted: Yes
Wet space: No
Addition: No
Conversion: No

11 Floor 2 - W.I.C.



Max Dimensions: 5'8" x 3'11"
Calculated Area: 22 sq. ft
Included: Yes

Heated: Yes
Finished: Yes
Enclosed: Yes
Contiguous: Yes
Permitted: Yes
Wet space: No
Addition: No
Conversion: No

2205 Gulf Boulevard, Indian Rocks Beach, Pinellas County,
Florida, United States, 33785, B

12 Floor 2 - Balcony



Max Dimensions: 21'4" x 9'0"
Calculated Area: 192 sq. ft
Included: No

Heated: No
Finished: Yes
Enclosed: No
Contiguous: Yes
Permitted: Yes
Wet space: No
Addition: No
Conversion: No

13 Floor 2 - WC



Max Dimensions: 5'8" x 4'4"
Calculated Area: 25 sq. ft
Included: Yes

Heated: Yes
Finished: Yes
Enclosed: Yes
Contiguous: Yes
Permitted: Yes
Wet space: No
Addition: No
Conversion: No

14 Floor 2 - Living Room



Max Dimensions: 21'4" x 19'9"
Calculated Area: 421 sq. ft
Included: Yes

Heated: Yes
Finished: Yes
Enclosed: Yes
Contiguous: Yes
Permitted: Yes
Wet space: No
Addition: No
Conversion: No

15 Floor 2 - Hall



Max Dimensions: 3'11" x 10'6"
Calculated Area: 41 sq. ft
Included: Yes

Heated: Yes
Finished: Yes
Enclosed: Yes
Contiguous: Yes
Permitted: Yes
Wet space: No
Addition: No
Conversion: No

16 Floor 2 - Pantry



Max Dimensions: 5'1" x 4'4"
Calculated Area: 22 sq. ft
Included: Yes

Heated: Yes
Finished: Yes
Enclosed: Yes
Contiguous: Yes
Permitted: Yes
Wet space: No
Addition: No
Conversion: No

17 Floor 3 - Utility



Max Dimensions: 4'0" x 4'6"
Calculated Area: 18 sq. ft
Included: No

Heated: Yes
Finished: No
Enclosed: Yes
Contiguous: Yes
Permitted: Yes
Wet space: No
Addition: No
Conversion: No

18 Floor 3 - Hall



Max Dimensions: 3'9" x 20'4"
Calculated Area: 76 sq. ft
Included: Yes

Heated: Yes
Finished: Yes
Enclosed: Yes
Contiguous: Yes
Permitted: Yes
Wet space: No
Addition: No
Conversion: No

19 Floor 3 - W.I.C.



Max Dimensions: 4'0" x 7'0"
Calculated Area: 28 sq. ft
Included: Yes

Heated: Yes
Finished: Yes
Enclosed: Yes
Contiguous: Yes
Permitted: Yes
Wet space: No
Addition: No
Conversion: No

20 Floor 3 - WC



Max Dimensions: 6'7" x 2'10"
Calculated Area: 19 sq. ft
Included: Yes

Heated: Yes
Finished: Yes
Enclosed: Yes
Contiguous: Yes
Permitted: Yes
Wet space: Yes
Addition: No
Conversion: No

2205 Gulf Boulevard, Indian Rocks Beach, Pinellas County,
Florida, United States, 33785, B

21 Floor 3 - Primary Bath



Max Dimensions: 13'0" x 12'9"
Calculated Area: 136 sq. ft
Included: Yes

Heated: Yes
Finished: Yes
Enclosed: Yes
Contiguous: Yes
Permitted: Yes
Wet space: Yes
Addition: No
Conversion: No

22 Floor 3 - Laundry



Max Dimensions: 6'2" x 5'5"
Calculated Area: 33 sq. ft
Included: Yes

Heated: Yes
Finished: Yes
Enclosed: Yes
Contiguous: Yes
Permitted: Yes
Wet space: No
Addition: No
Conversion: No

23 Floor 3 - Bath



Max Dimensions: 7'10" x 8'10"
Calculated Area: 68 sq. ft
Included: Yes

Heated: Yes
Finished: Yes
Enclosed: Yes
Contiguous: Yes
Permitted: Yes
Wet space: Yes
Addition: No
Conversion: No

2205 Gulf Boulevard, Indian Rocks Beach, Pinellas County,
Florida, United States, 33785, B

24 Floor 3 - W.I.C.



Max Dimensions: 4'0" x 6'9"
Calculated Area: 27 sq. ft
Included: Yes

Heated: Yes
Finished: Yes
Enclosed: Yes
Contiguous: Yes
Permitted: Yes
Wet space: No
Addition: No
Conversion: No

25 Floor 3 - W.I.C.



Max Dimensions: 4'10" x 8'10"
Calculated Area: 43 sq. ft
Included: Yes

Heated: Yes
Finished: Yes
Enclosed: Yes
Contiguous: Yes
Permitted: Yes
Wet space: No
Addition: No
Conversion: No

26 Floor 3 - Primary Bedroom



Max Dimensions: 21'4" x 13'8"
Calculated Area: 291 sq. ft
Included: Yes

Heated: Yes
Finished: Yes
Enclosed: Yes
Contiguous: Yes
Permitted: Yes
Wet space: No
Addition: No
Conversion: No

27 Floor 3 - W.I.C.



Max Dimensions: 13'0" x 6'11"
Calculated Area: 90 sq. ft
Included: Yes

Heated: Yes
Finished: Yes
Enclosed: Yes
Contiguous: Yes
Permitted: Yes
Wet space: No
Addition: No
Conversion: No

28 Floor 3 - Bedroom



Max Dimensions: 11'5" x 14'9"
Calculated Area: 168 sq. ft
Included: Yes

Heated: Yes
Finished: Yes
Enclosed: Yes
Contiguous: Yes
Permitted: Yes
Wet space: No
Addition: No
Conversion: No

29 Floor 3 - Elevator



Max Dimensions: 5'9" x 5'6"
Calculated Area: 32 sq. ft
Included: No

Heated: No
Finished: No
Enclosed: Yes
Contiguous: Yes
Permitted: Yes
Wet space: No
Addition: No
Conversion: No

2205 Gulf Boulevard, Indian Rocks Beach, Pinellas County,
Florida, United States, 33785, B

30 Floor 3 - Hall



Max Dimensions: 9'7" x 33'11"
Calculated Area: 236 sq. ft
Included: Yes

Heated: Yes
Finished: Yes
Enclosed: Yes
Contiguous: Yes
Permitted: Yes
Wet space: No
Addition: No
Conversion: No

31 Floor 3 - Bedroom



Max Dimensions: 13'7" x 12'7"
Calculated Area: 172 sq. ft
Included: Yes

Heated: Yes
Finished: Yes
Enclosed: Yes
Contiguous: Yes
Permitted: Yes
Wet space: No
Addition: No
Conversion: No

32 Floor 3 - Balcony



Max Dimensions: 7'3" x 8'3"
Calculated Area: 60 sq. ft
Included: No

Heated: No
Finished: Yes
Enclosed: No
Contiguous: Yes
Permitted: Yes
Wet space: No
Addition: No
Conversion: No

33 Floor 3 - Bath



Max Dimensions: 9'10" x 5'5"
Calculated Area: 53 sq. ft
Included: Yes

Heated: Yes
Finished: Yes
Enclosed: Yes
Contiguous: Yes
Permitted: Yes
Wet space: Yes
Addition: No
Conversion: No

34 Floor 4 - Roof Terrace



Max Dimensions: 21'5" x 76'11"
Calculated Area: 1545 sq. ft
Included: No

Heated: No
Finished: No
Enclosed: No
Contiguous: Yes
Permitted: No
Wet space: No
Addition: No
Conversion: No

35 Floor 4 - Elevator



Max Dimensions: 5'8" x 5'6"
Calculated Area: 31 sq. ft
Included: No

Heated: No
Finished: No
Enclosed: Yes
Contiguous: Yes
Permitted: Yes
Wet space: No
Addition: No
Conversion: No