



Home report


1640 Circle B Road, Paso Robles, San Luis Obispo County,
California, United States, 93446





Property summary


**0** Garages


**4** Bedrooms

**2** Bathrooms

**1** Half baths

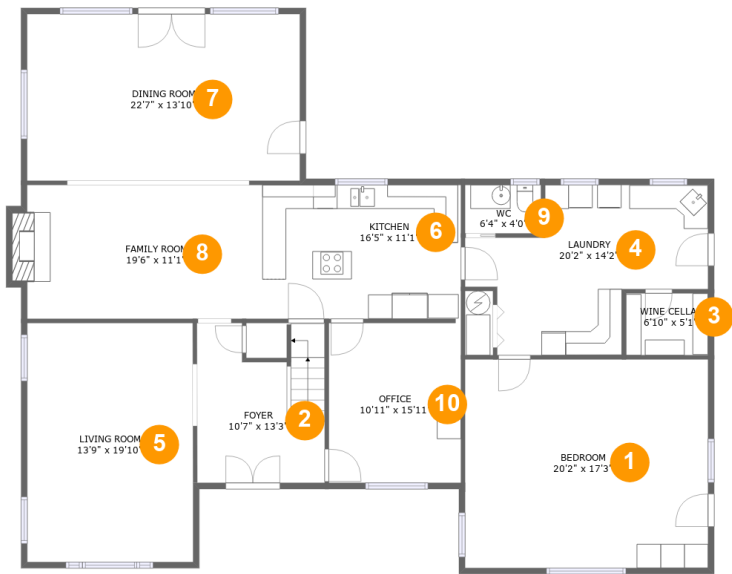
**2** Floors

**2,962** Gross living area sqft

**3,037** Total sqft

Home report

1640 Circle B Road, Paso Robles, San Luis Obispo County,
California, United States, 93446



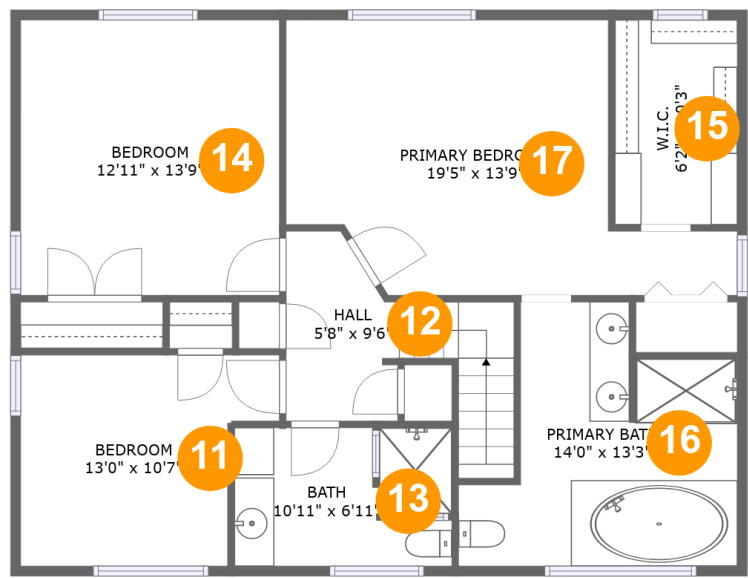
Room dimensions

Floor 1 Total sqft: 1992 Living area: 1917

| # | | Dimensions | sqft | Counted as living area |
|----|-------------|-----------------|------------|------------------------|
| 1 | Bedroom | 20'2" x 17'3" | 349 sq. ft | Yes |
| 2 | Foyer | 10'7" x 13'3" | 137 sq. ft | Yes |
| 3 | Wine Cellar | 6'10" x 5'1" | 35 sq. ft | No |
| 4 | Laundry | 20'2" x 14'2" | 202 sq. ft | Yes |
| 5 | Living Room | 13'9" x 19'10" | 273 sq. ft | Yes |
| 6 | Kitchen | 16'5" x 11'1" | 182 sq. ft | Yes |
| 7 | Dining Room | 22'7" x 13'10" | 314 sq. ft | Yes |
| 8 | Family Room | 19'6" x 11'1" | 224 sq. ft | Yes |
| 9 | WC | 6'4" x 4'0" | 25 sq. ft | No |
| 10 | Office | 10'11" x 15'11" | 147 sq. ft | Yes |

Home report

1640 Circle B Road, Paso Robles, San Luis Obispo County,
California, United States, 93446

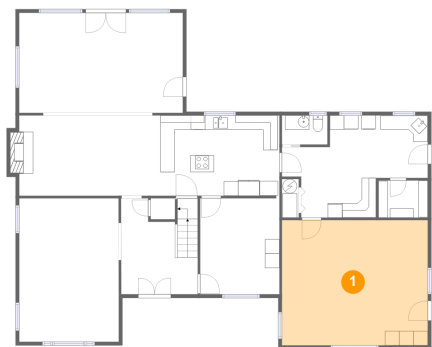


Room dimensions

Floor 2Total sqft: 1045 Living area: 1045

| # | | Dimensions | sqft | Counted as living area |
|----|-----------------|----------------|------------|------------------------|
| 11 | Bedroom | 13'0" x 10'7" | 118 sq. ft | Yes |
| 12 | Hall | 5'8" x 9'6" | 80 sq. ft | Yes |
| 13 | Bath | 10'11" x 6'11" | 73 sq. ft | Yes |
| 14 | Bedroom | 12'11" x 13'9" | 179 sq. ft | Yes |
| 15 | W.I.C. | 6'2" x 10'3" | 63 sq. ft | Yes |
| 16 | Primary Bath | 14'0" x 13'3" | 140 sq. ft | Yes |
| 17 | Primary Bedroom | 19'5" x 13'9" | 229 sq. ft | Yes |

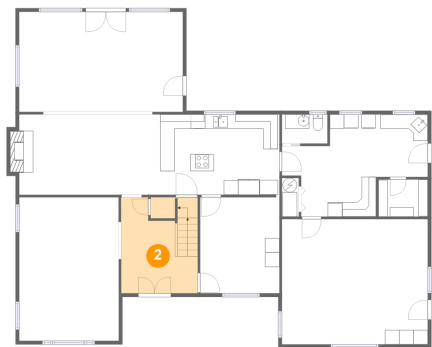
1 Floor 1 - Bedroom



Dimensions: 20'2" x 17'3"
Area: 349 sq. ft
Counted as living area: Yes

Heated: Yes
Finished: Yes
Enclosed: Yes
Contiguous: Yes
Permitted: Yes
Wet space: No
Addition: No
Conversion: No

2 Floor 1 - Foyer



Dimensions: 10'7" x 13'3"
Area: 137 sq. ft
Counted as living area: Yes

Heated: Yes
Finished: Yes
Enclosed: Yes
Contiguous: Yes
Permitted: Yes
Wet space: No
Addition: No
Conversion: No

Home report

1640 Circle B Road, Paso Robles, San Luis Obispo County,
California, United States, 93446

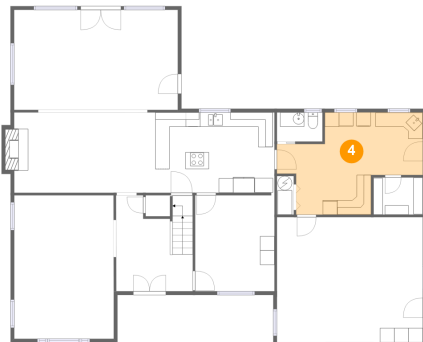
3 Floor 1 - Wine Cellar



Dimensions: 6'10" x 5'1"
Area: 35 sq. ft
Counted as living area: No

Heated: No
Finished: No
Enclosed: Yes
Contiguous: Yes
Permitted: Yes
Wet space: No
Addition: No
Conversion: No

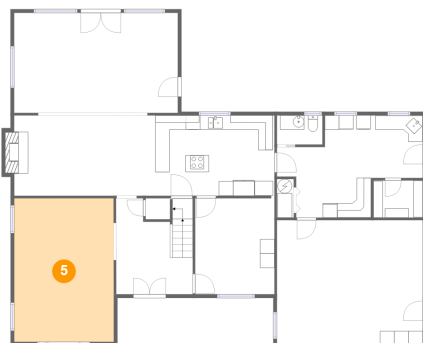
4 Floor 1 - Laundry



Dimensions: 20'2" x 14'2"
Area: 202 sq. ft
Counted as living area: Yes

Heated: Yes
Finished: Yes
Enclosed: Yes
Contiguous: Yes
Permitted: Yes
Wet space: No
Addition: No
Conversion: No

5 Floor 1 - Living Room



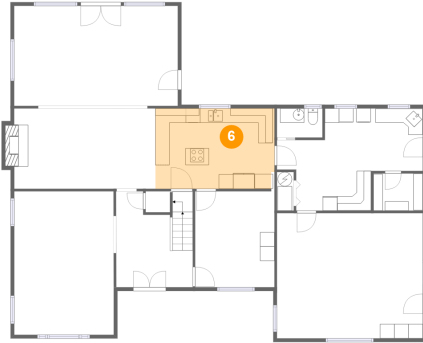
Dimensions: 13'9" x 19'10"
Area: 273 sq. ft
Counted as living area: Yes

Heated: Yes
Finished: Yes
Enclosed: Yes
Contiguous: Yes
Permitted: Yes
Wet space: No
Addition: No
Conversion: No

Home report

1640 Circle B Road, Paso Robles, San Luis Obispo County,
California, United States, 93446

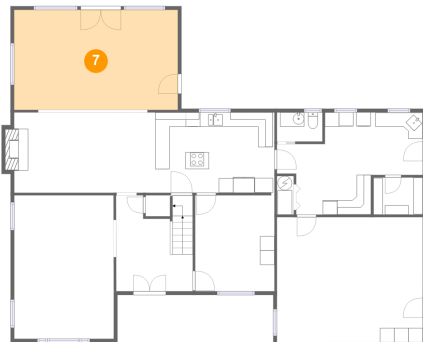
6 Floor 1 - Kitchen



Dimensions: 16'5" x 11'1"
Area: 182 sq. ft
Counted as living area: Yes

Heated: Yes
Finished: Yes
Enclosed: Yes
Contiguous: Yes
Permitted: Yes
Wet space: No
Addition: No
Conversion: No

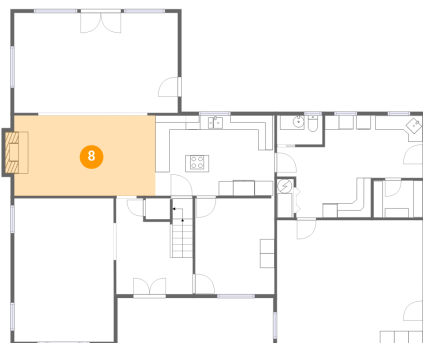
7 Floor 1 - Dining Room



Dimensions: 22'7" x 13'10"
Area: 314 sq. ft
Counted as living area: Yes

Heated: Yes
Finished: Yes
Enclosed: Yes
Contiguous: Yes
Permitted: Yes
Wet space: No
Addition: No
Conversion: No

8 Floor 1 - Family Room



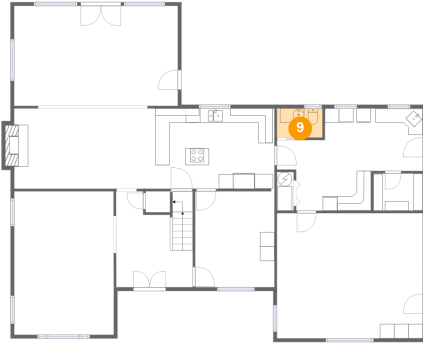
Dimensions: 19'6" x 11'1"
Area: 224 sq. ft
Counted as living area: Yes

Heated: Yes
Finished: Yes
Enclosed: Yes
Contiguous: Yes
Permitted: Yes
Wet space: No
Addition: No
Conversion: No

Home report

1640 Circle B Road, Paso Robles, San Luis Obispo County,
California, United States, 93446

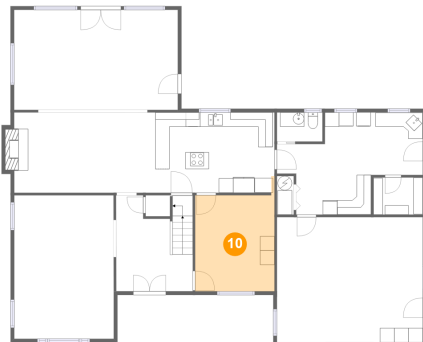
9 Floor 1 - WC



Dimensions: 6'4" x 4'0"
Area: 25 sq. ft
Counted as living area: No

Heated: Yes
Finished: Yes
Enclosed: Yes
Contiguous: Yes
Permitted: Yes
Wet space: Yes
Addition: No
Conversion: No

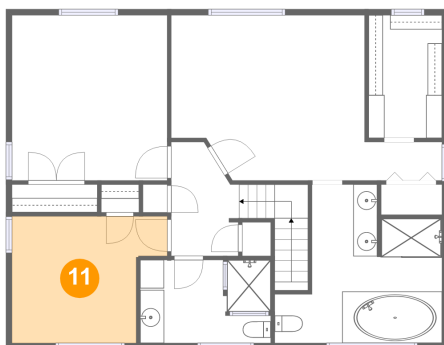
10 Floor 1 - Office



Dimensions: 10'11" x 15'11"
Area: 147 sq. ft
Counted as living area: Yes

Heated: Yes
Finished: Yes
Enclosed: Yes
Contiguous: Yes
Permitted: Yes
Wet space: No
Addition: No
Conversion: No

11 Floor 2 - Bedroom

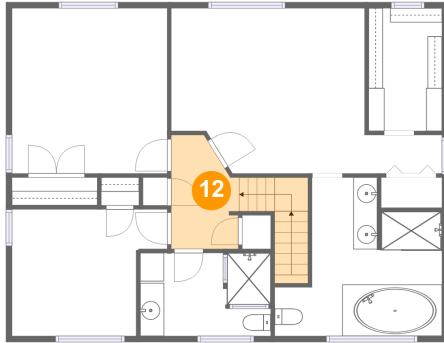


Dimensions: 13'0" x 10'7"
Area: 118 sq. ft
Counted as living area: Yes

Heated: Yes
Finished: Yes
Enclosed: Yes
Contiguous: Yes
Permitted: Yes
Wet space: No
Addition: No
Conversion: No

1640 Circle B Road, Paso Robles, San Luis Obispo County,
California, United States, 93446

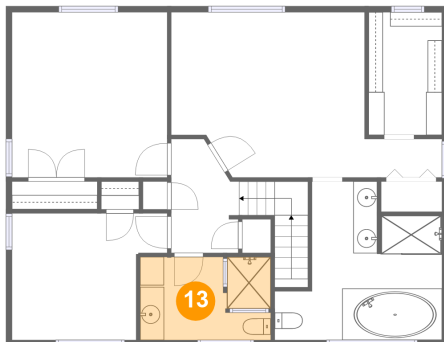
12 Floor 2 - Hall



Dimensions: 5'8" x 9'6"
Area: 80 sq. ft
Counted as living area: Yes

Heated: Yes
Finished: Yes
Enclosed: Yes
Contiguous: Yes
Permitted: Yes
Wet space: No
Addition: No
Conversion: No

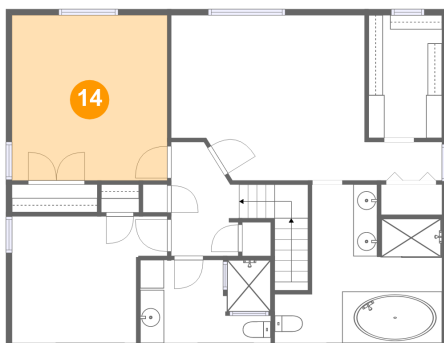
13 Floor 2 - Bath



Dimensions: 10'11" x 6'11"
Area: 73 sq. ft
Counted as living area: Yes

Heated: Yes
Finished: Yes
Enclosed: Yes
Contiguous: Yes
Permitted: Yes
Wet space: Yes
Addition: No
Conversion: No

14 Floor 2 - Bedroom



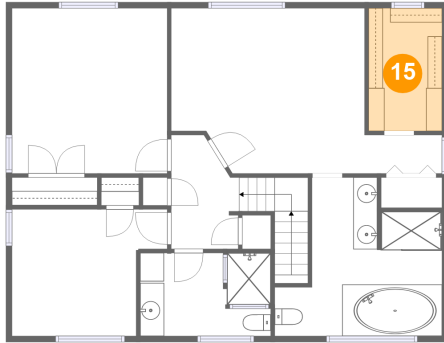
Dimensions: 12'11" x 13'9"
Area: 179 sq. ft
Counted as living area: Yes

Heated: Yes
Finished: Yes
Enclosed: Yes
Contiguous: Yes
Permitted: Yes
Wet space: No
Addition: No
Conversion: No

Home report

1640 Circle B Road, Paso Robles, San Luis Obispo County,
California, United States, 93446

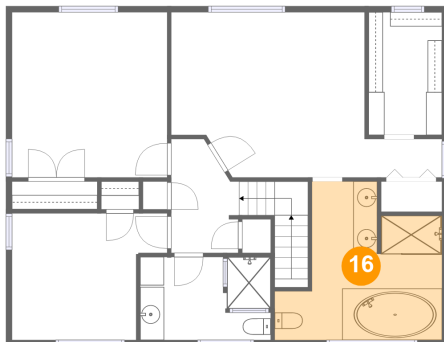
15 Floor 2 - W.I.C.



Dimensions: 6'2" x 10'3"
Area: 63 sq. ft
Counted as living area: Yes

Heated: Yes
Finished: Yes
Enclosed: Yes
Contiguous: Yes
Permitted: Yes
Wet space: No
Addition: No
Conversion: No

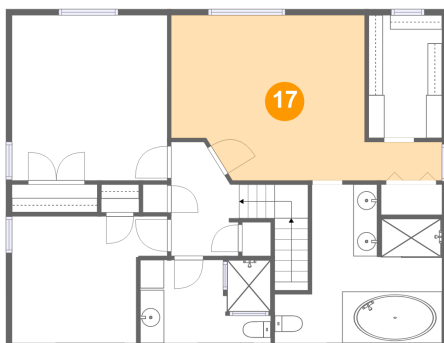
16 Floor 2 - Primary Bath



Dimensions: 14'0" x 13'3"
Area: 140 sq. ft
Counted as living area: Yes

Heated: Yes
Finished: Yes
Enclosed: Yes
Contiguous: Yes
Permitted: Yes
Wet space: Yes
Addition: No
Conversion: No

17 Floor 2 - Primary Bedroom



Dimensions: 19'5" x 13'9"
Area: 229 sq. ft
Counted as living area: Yes

Heated: Yes
Finished: Yes
Enclosed: Yes
Contiguous: Yes
Permitted: Yes
Wet space: No
Addition: No
Conversion: No