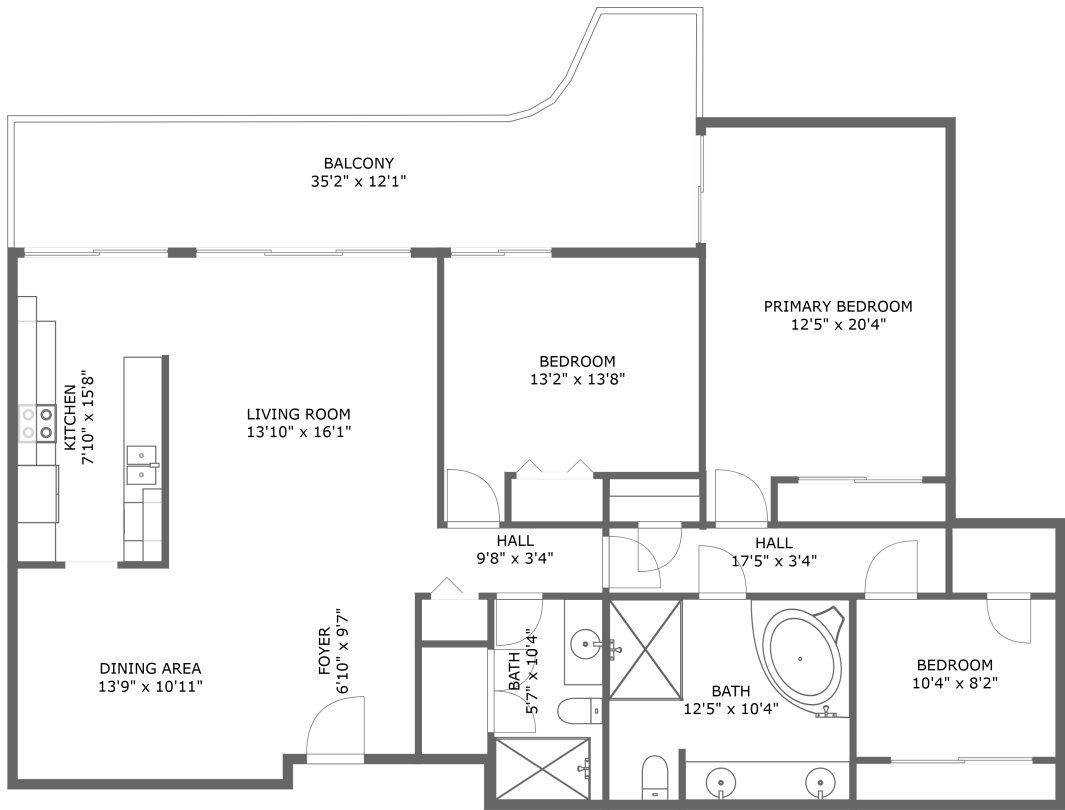



Home report


19667 Turnberry Way, Aventura, Miami-Dade County, Florida,
United States, 33180, 3





FLOOR 1

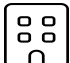
Property summary


 **0** Garages


 **3** Bedrooms

 **2** Bathrooms

 **0** Half baths

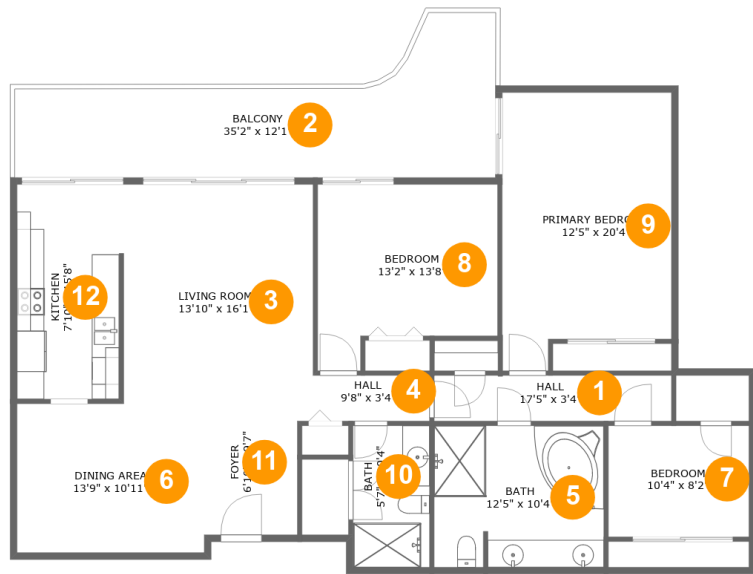
 **1** Floors

 **1,468** Gross living area sqft

 **1,733** Total sqft

Home report

19667 Turnberry Way, Aventura, Miami-Dade County, Florida,
United States, 33180, 3



Room dimensions

Floor 1 Total sqft: 1733 Living area: 1468

| # | | Dimensions | sqft | Counted as living area |
|----|-----------------|----------------|------------|------------------------|
| 1 | Hall | 17'5" x 3'4" | 58 sq. ft | Yes |
| 2 | Balcony | 35'2" x 12'1" | 265 sq. ft | No |
| 3 | Living Room | 13'10" x 16'1" | 220 sq. ft | Yes |
| 4 | Hall | 9'8" x 3'4" | 32 sq. ft | Yes |
| 5 | Bath | 12'5" x 10'4" | 128 sq. ft | Yes |
| 6 | Dining Area | 13'9" x 10'11" | 150 sq. ft | Yes |
| 7 | Bedroom | 10'4" x 8'2" | 84 sq. ft | Yes |
| 8 | Bedroom | 13'2" x 13'8" | 154 sq. ft | Yes |
| 9 | Primary Bedroom | 12'5" x 20'4" | 231 sq. ft | Yes |
| 10 | Bath | 5'7" x 10'4" | 58 sq. ft | Yes |
| 11 | Foyer | 6'10" x 9'7" | 66 sq. ft | Yes |

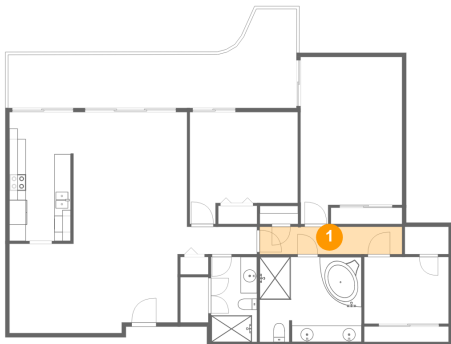
Home report

19667 Turnberry Way, Aventura, Miami-Dade County, Florida,
United States, 33180, 3

| # | | Dimensions | sqft | Counted as living area |
|----|---------|---------------|------------|------------------------|
| 12 | Kitchen | 7'10" x 15'8" | 119 sq. ft | Yes |

19667 Turnberry Way, Aventura, Miami-Dade County, Florida,
United States, 33180, 3

1 Floor 1 - Hall



Dimensions: 17'5" x 3'4"
Area: 58 sq. ft
Counted as living area: Yes

Heated: Yes
Finished: Yes
Enclosed: Yes
Contiguous: Yes
Permitted: Yes
Wet space: No
Addition: No
Conversion: No

2 Floor 1 - Balcony



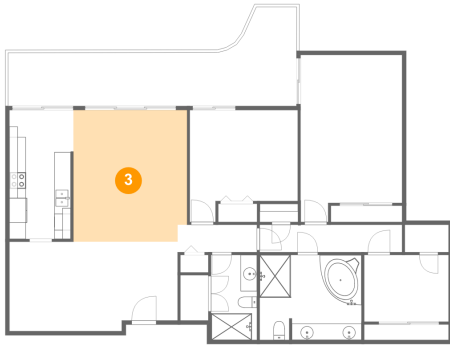
Dimensions: 35'2" x 12'1"
Area: 265 sq. ft
Counted as living area: No

Heated: No
Finished: Yes
Enclosed: No
Contiguous: Yes
Permitted: Yes
Wet space: No
Addition: No
Conversion: No

Home report

19667 Turnberry Way, Aventura, Miami-Dade County, Florida,
United States, 33180, 3

3 Floor 1 - Living Room



Dimensions: 13'10" x 16'1"
Area: 220 sq. ft
Counted as living area: Yes

Heated: Yes
Finished: Yes
Enclosed: Yes
Contiguous: Yes
Permitted: Yes
Wet space: No
Addition: No
Conversion: No

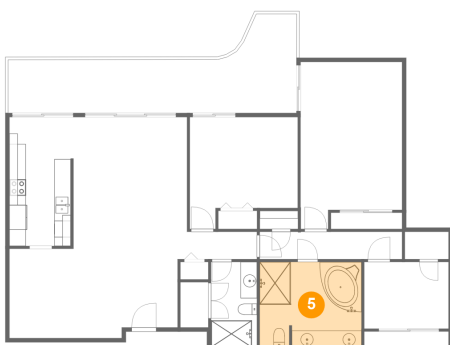
4 Floor 1 - Hall



Dimensions: 9'8" x 3'4"
Area: 32 sq. ft
Counted as living area: Yes

Heated: Yes
Finished: Yes
Enclosed: Yes
Contiguous: Yes
Permitted: Yes
Wet space: No
Addition: No
Conversion: No

5 Floor 1 - Bath

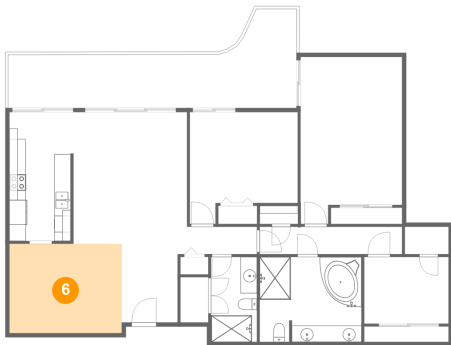


Dimensions: 12'5" x 10'4"
Area: 128 sq. ft
Counted as living area: Yes

Heated: Yes
Finished: Yes
Enclosed: Yes
Contiguous: Yes
Permitted: Yes
Wet space: Yes
Addition: No
Conversion: No

19667 Turnberry Way, Aventura, Miami-Dade County, Florida,
United States, 33180, 3

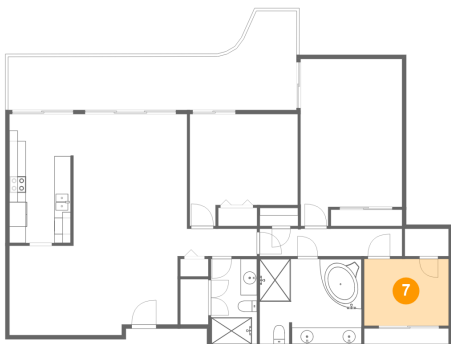
6 Floor 1 - Dining Area



Dimensions: 13'9" x 10'11"
Area: 150 sq. ft
Counted as living area: Yes

Heated: Yes
Finished: Yes
Enclosed: Yes
Contiguous: Yes
Permitted: Yes
Wet space: No
Addition: No
Conversion: No

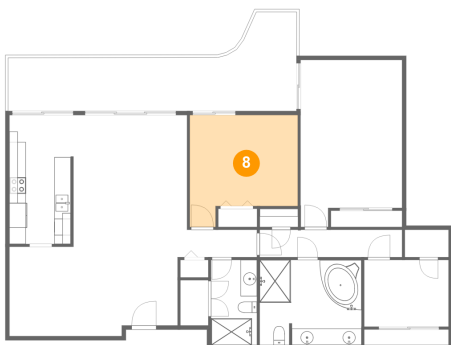
7 Floor 1 - Bedroom



Dimensions: 10'4" x 8'2"
Area: 84 sq. ft
Counted as living area: Yes

Heated: Yes
Finished: Yes
Enclosed: Yes
Contiguous: Yes
Permitted: Yes
Wet space: No
Addition: No
Conversion: No

8 Floor 1 - Bedroom



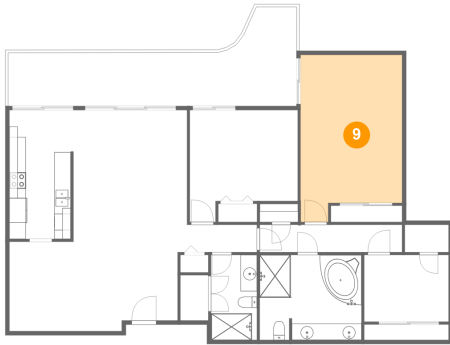
Dimensions: 13'2" x 13'8"
Area: 154 sq. ft
Counted as living area: Yes

Heated: Yes
Finished: Yes
Enclosed: Yes
Contiguous: Yes
Permitted: Yes
Wet space: No
Addition: No
Conversion: No

Home report

19667 Turnberry Way, Aventura, Miami-Dade County, Florida,
United States, 33180, 3

9 Floor 1 - Primary Bedroom



Dimensions: 12'5" x 20'4"
Area: 231 sq. ft
Counted as living area: Yes

Heated: Yes
Finished: Yes
Enclosed: Yes
Contiguous: Yes
Permitted: Yes
Wet space: No
Addition: No
Conversion: No

10 Floor 1 - Bath



Dimensions: 5'7" x 10'4"
Area: 58 sq. ft
Counted as living area: Yes

Heated: Yes
Finished: Yes
Enclosed: Yes
Contiguous: Yes
Permitted: Yes
Wet space: Yes
Addition: No
Conversion: No

11 Floor 1 - Foyer

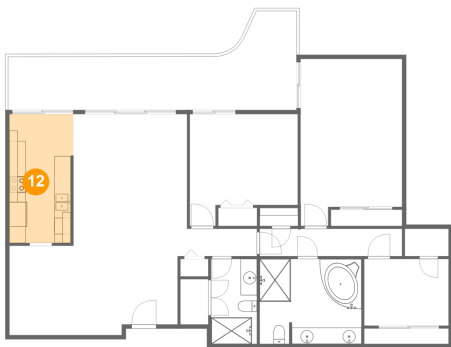


Dimensions: 6'10" x 9'7"
Area: 66 sq. ft
Counted as living area: Yes

Heated: Yes
Finished: Yes
Enclosed: Yes
Contiguous: Yes
Permitted: Yes
Wet space: No
Addition: No
Conversion: No

19667 Turnberry Way, Aventura, Miami-Dade County, Florida,
United States, 33180, 3

12 Floor 1 - Kitchen



Dimensions: 7'10" x 15'8"
Area: 119 sq. ft
Counted as living area: Yes

Heated: Yes
Finished: Yes
Enclosed: Yes
Contiguous: Yes
Permitted: Yes
Wet space: No
Addition: No
Conversion: No