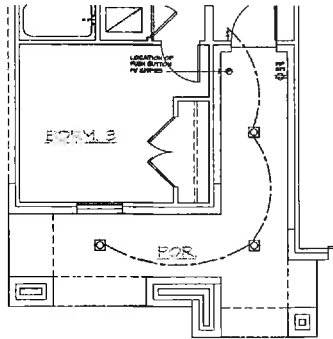
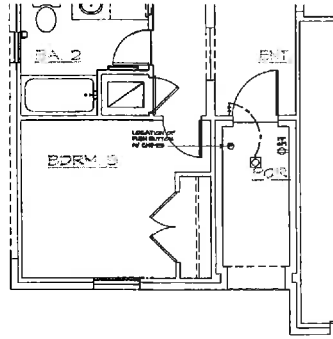


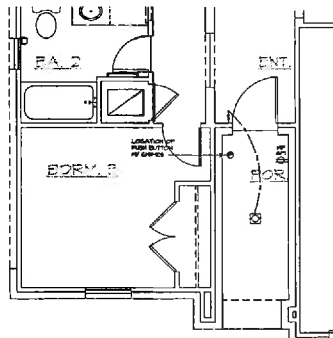
conduit  
above fireplace



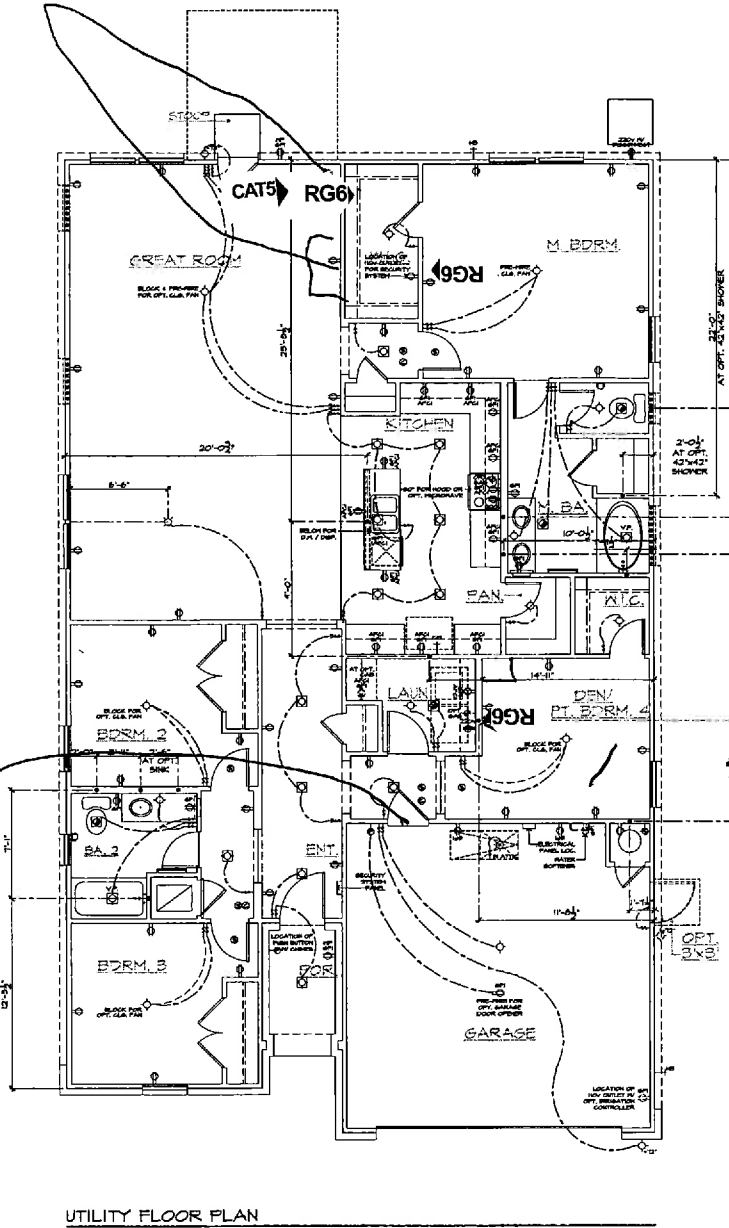
PARTIAL UTILITY PLAN 'D'  
SCALE 1/4"=1'-0" (227084) - 1/8"=1'-0" (17017)



PARTIAL UTILITY PLAN 'C'  
SCALE 1/4"=1'-0" (227084) - 1/8"=1'-0" (17017)



PARTIAL UTILITY PLAN 'B'  
SCALE 1/4"=1'-0" (227084) - 1/8"=1'-0" (17017)



UTILITY FLOOR PLAN  
SCALE 1/4"=1'-0" (227084) - 1/8"=1'-0" (17017)

**UTILITY LEGEND**

- 150V DUPLEX CONVENIENCE RECEPTACLE
- ARC FAULT/CIRCUIT BREAKER RESISTANT TYPICAL UNO
- 120V (1N) RECEPTACLE BY 90° CIRCUIT
- 120V (1N) WATER RESISTANT HOUSING
- 120V (1N) RECEPTACLE BY 90° CIRCUIT HEIGHT NOTED AS PER PLAN
- 120V (1N) RECEPTACLE BY 90° AND ARC FAULT/CIRCUIT BREAKER HEIGHT NOTED AS PER PLAN
- 120V (APG) 1 TR) RECESSED FLOOR RECEPTACLE BY 50°
- 120V (APG) 1 TR) CEILING MOUNTED DUPLEX CONVENIENCE RECEPTACLE
- 120V (APG) 1 TR) DUPLEX CONVENIENCE RECEPTACLE SWITCH CONTROLLED, U2 HOT, U2 A, T, Y, TYP. UNO
- 120V (APG) 1 TR) DUPLEX CONVENIENCE RECEPTACLE SWITCH CONTROLLED, U2 HOT
- 220V SINGLE CONVENIENCE RECEPTACLE HEIGHT NOTED AS PER PLAN
- TWO-POLE LIGHT SWITCH AT 42" ADV. PHL. PHL. 18" ABOVE GABRIER TYP. UNO
- THREE-POLE LIGHT SWITCH AT 42" ADV. PHL. PHL. 18" ABOVE GABRIER TYP. UNO
- FOUR-POLE LIGHT SWITCH AT 42" ADV. PHL. PHL. 18" ABOVE GABRIER TYP. UNO
- MANUAL ON OCCUPANCY SENSORS
- DRIPPER LIGHT SWITCH
- HALL MOUNTED INCANDESCENT LIGHT FIXTURE AT 12" ADV. PHL. PHL. TYPICAL UNO
- HALL MOUNTED FLUORESCENT LIGHT FIXTURE AT 12" ADV. PHL. PHL. TYPICAL UNO
- CEILING MOUNTED INCANDESCENT LIGHT FIXTURE
- CEILING MOUNTED FLUORESCENT LIGHT FIXTURE
- RECESSED INCANDESCENT LIGHT FIXTURE (BYE BALL) (CJ) (AT)
- RECESSED INCANDESCENT LIGHT FIXTURE (CJ) (AT)
- RECESSED FLUORESCENT LIGHT FIXTURE (CJ) (AT)
- MIN RECESSED INCANDESCENT LIGHT FIXTURE AT 1" AIR TRIM
- NOTE: IC = ILLUMINATION ZERO CLEARANCE TYPE AT = AIR TRIM
- RECESSED EXHAUST FAN
- RECESSED EXHAUST FAN INCANDESCENT LIGHT COMBINATION
- RECESSED EXHAUST FAN FLUORESCENT LIGHT COMBINATION
- INCANDESCENT HALL SENSOR HEIGHT NOTED AS PER PLAN
- ILLUMINATED ADDRESS SIGN - VISIBLE FROM STREE
- 12"X48" FLUORESCENT LIGHT BOX (CEILING MOUNTED) VERIFY DIRECTION AND SIZE WITH FLOOR AND ROOF TRUSS LAYOUTS
- SURFACE MOUNTED FLUORESCENT LIGHT BAR
- 12"X48" FLUORESCENT LIGHT BOX (CEILING MOUNTED) VERIFY DIRECTION AND SIZE WITH FLOOR AND ROOF TRUSS LAYOUTS
- OPTIONAL PRE-WIRED CEILING FAN AND SWITCH - LOCATED IN CENTER OF ROOM UNO
- CEILING MOUNTED JUNCTION BOX HEIGHT NOTED AS PER PLAN
- HALL MOUNTED JUNCTION BOX HEIGHT NOTED AS PER PLAN
- DOOR CASE HEIGHT NOTED AS PER PLAN
- CATV PHL. PHL. TYPICAL UNO
- PUSH BUTTON AT 42" ADV. PHL. PHL. TYPICAL UNO
- PHONE OUTLET AT 12" ADV. PHL. PHL. BY ADV. CENTER TYPICAL UNO
- SERVICE BOX - VERIFY WITH DIVISION SPECS.
- ELECTRICAL PANEL - VERIFY LOCATION WITH DIVISION SPECS. SERVICE LINE LOCATION & CITY ORIGINANCE
- HOSE DE
- HOSE RIE BY S.D.V.
- WATER STOP FOR ICE MAKER
- APPROVED CEILING MOUNTED SMOKE DETECTOR TO BE HARD WIRED WITH BATTERY BACKUP AND INTERCONNECTED PER I.C. SECTION RISE
- APPROVED CARBON MONOXIDE ALARM THERMISTAT (EVERY LOCATION IN HVAC PLAN)
- GAZ TAP
- GAZ MET - FIREPLACE GAS VALVES SHALL BE LOCATED OUTSIDE OF REQUIRED HEARTH AREA PER UPC (2104)
- RISER DISCONNECT
- MEASUREMENT
- VAPOR PROOF
- INTERIOR FINISH 24" MIN. SEPARATION OF ELECTRICAL BOXES AS SHOWN BELOW
- SMOKE DETECTOR TO BE HARD WIRED WITH BATTERY BACKUP AND INTERCONNECTED PER I.C. SECTION RISE

**NOTES**

1. MECHANICAL, ELECTRICAL AND PLUMBING SYSTEMS ARE SHOWN FOR INFORMATION ONLY. THE CONTRACTOR SHALL BE RESPONSIBLE FOR VERIFYING ALL SYSTEMS ARE AS SHOWN AND PLACEMENT. ALL HEIGHTS SHOWN ARE TO CENTERLINE OF FINISH SURFACE.
2. PROVIDE SWITCH LIGHT (50V (APG) 1 TR) DUPLEX RECEPTACLE 1 PHL. GAS STOP OR 200V RECEPTACLE IN ATTIC FOR FAN - PER COMPANY SPECIFICATIONS.
3. SMOKE DETECTORS IN ROOMS WITH VULNERABLE CEILING TO BE LOCATED AT HIGHEST POINT OF CEILING.
4. 30 FOOT MAX. RADIUS FOR LIFE SAFETY AND ADDITIONAL COLD WATER STOP; REFER TO SLAB INTEREST PLAN FOR LOCATION.
5. 200 AMP ELECTRICAL PANEL (SPINALL) ELECTRICAL PLAN CHECK FOR REQUIRED IF LOAD EXCEEDS 400 AMP.
6. INSTALL ALL EXTERIOR HOSE BURNS AT (120" AFF) 12" ABOVE EXTERIOR GAZ METER (EXTERIOR).
7. INSTALL SHED GAZ AT (120" AFF)
8. ALL DIMENSIONS SHOWN FOR CEILING FIXTURES TO BE VERIFIED PRIOR TO INSTALLATION OF DRYWALL.



CENTRAL TEXAS  
40' SERIES  
KB HOME  
CENTRAL TEXAS DIVISION  
10800 PEGAN PARK BLVD.  
SUITE 200  
AUSTIN, TX 78760  
TEL: (512) 661-8100



ISSUE DATE: 09/06/19  
PROJECT No.: 868900-49  
DIVISION MGR.: MCP  
REVISIONS: 06/07/19

- FRAMEWORK REVISIONS CT0304/2019/04/08/0-KEL
- DIVISION REVISIONS CT0304/2019/04/08/0-KEL
- DIVISION REVISIONS CT0304/2019/04/08/0-KEL
- REV. LOG / MAX. REC. UTILITY CT0304/2019/04/08/0-KEL

PLAN:  
**139.1965-R**

SHEET:  
**5.1**

SPEC "2"

40' SERIES

TRC 1-21-17