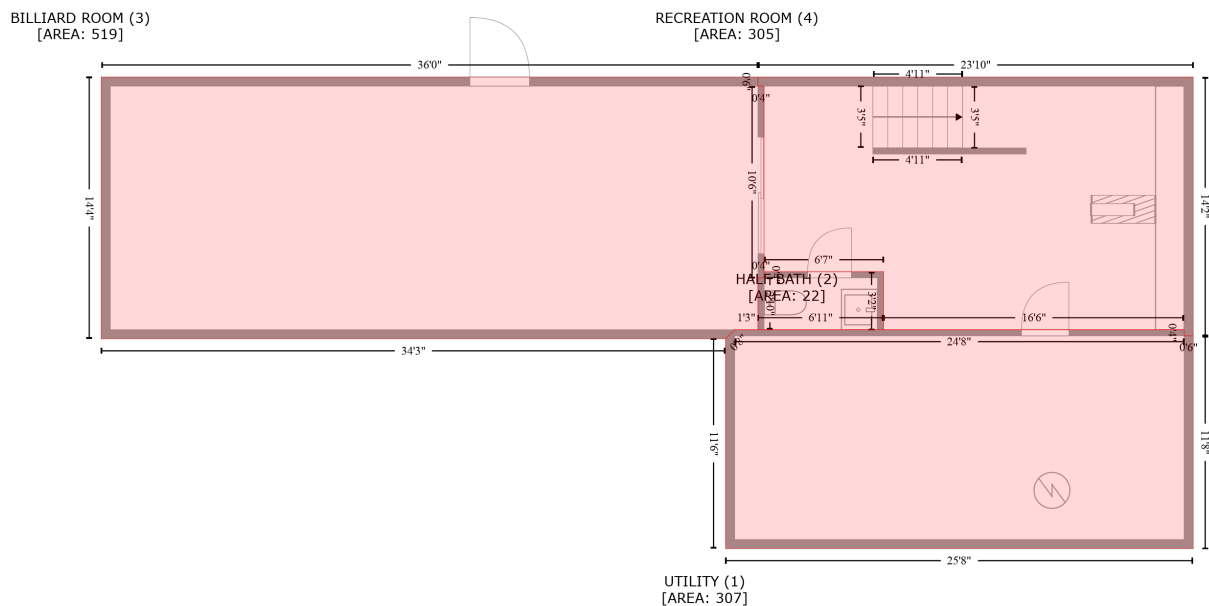


3225 Middleway Pike, Tarico Heights, Bunker Hill, Berkeley County, West Virginia, United States, 25413

Gross Living Area: 1551 sq. ft



Space	Area (sq. ft)	Calculation <small>Coordinate Polygon Area Algorithm using inches</small>
UTILITY (Non-living area)	307	$-((715.8 + 715.8) * (801.6 - 805.6) + (715.8 + 721.8) * (805.6 - 805.6) + (721.8 + 721.8) * (805.6 - 945.5) + (721.8 + 414.2) * (945.5 - 945.5) + (414.2 + 414.2) * (945.5 - 807.6) + (414.2 + 420.2) * (807.6 - 801.6) + (420.2 + 715.8) * (801.6 - 801.6)) * 0.5 + 0.00694$
HALF BATH (Non-living area)	22	$-((518.1 + 518.1) * (763.6 - 801.6) + (518.1 + 435.6) * (801.6 - 801.6) + (435.6 + 435.6) * (801.6 - 767.6) + (435.6 + 439.6) * (767.6 - 767.6) + (439.6 + 439.6) * (767.6 - 763.6) + (439.6 + 518.1) * (763.6 - 763.6)) * 0.5 + 0.00694$
BILLIARD ROOM (Non-living area)	519	$-((435.6 + 435.6) * (635.6 - 641.6) + (435.6 + 439.6) * (641.6 - 641.6) + (439.6 + 439.6) * (641.6 - 767.6) + (439.6 + 435.6) * (767.6 - 767.6) + (435.6 + 435.6) * (767.6 - 801.6) + (435.6 + 420.2) * (801.6 - 801.6) + (420.2 + 414.2) * (801.6 - 807.6) + (414.2 + 3.6) * (807.6 - 807.6) + (3.6 + 3.6) * (807.6 - 635.6) + (3.6 + 435.6) * (635.6 - 635.6)) * 0.5 + 0.00694$
RECREATION ROOM (Non-living area)	305	$-((721.8 + 721.8) * (635.6 - 805.6) + (721.8 + 715.8) * (805.6 - 805.6) + (715.8 + 715.8) * (805.6 - 801.6) + (715.8 + 518.1) * (801.6 - 801.6) + (518.1 + 518.1) * (801.6 - 763.6) + (518.1 + 439.6) * (763.6 - 763.6) + (439.6 + 439.6) * (763.6 - 641.6) + (439.6 + 435.6) * (641.6 - 641.6) + (435.6 + 435.6) * (641.6 - 635.6) + (435.6 + 721.8) * (635.6 - 635.6)) * 0.5 + 0.00694$

3225 Middleway Pike, Tarico Heights, Bunker Hill, Berkeley County, West Virginia, United States, 25413

Gross Living Area: 1551 sq. ft



Space	Area (sq. ft)	Calculation
FLOOR 2 (Living area)	1551	$-\left((715.8 + 715.8) * (635.6 - 641.6) + (715.8 + 721.8) * (641.6 - 641.6) + (721.8 + 721.8) * (641.6 - 945.5) + (721.8 + 470.1) * (945.5 - 945.5) + (470.1 + 447.6) * (945.5 - 954.9) + (447.6 + 421.3) * (954.9 - 958.4) + (421.3 + 395) * (958.4 - 954.9) + (395 + 372.4) * (954.9 - 945.5) + (372.4 + 3.6) * (945.5 - 945.5) + (3.6 + 3.6) * (945.5 - 635.6) + (3.6 + 715.8) * (635.6 - 635.6)\right) * 0.5 * 0.00694$
GARAGE (Non-living area)	1257	$-\left((1579.6 + 1579.6) * (562 - 959.1) + (1579.6 + 1123.7) * (959.1 - 959.1) + (1123.7 + 1123.7) * (959.1 - 568) + (1123.7 + 1129.7) * (568 - 568) + (1129.7 + 1129.7) * (568 - 562) + (1129.7 + 1579.6) * (562 - 562)\right) * 0.5 * 0.00694$
GARAGE (Non-living area)	1074	$-\left((1129.7 + 1129.7) * (562 - 568) + (1129.7 + 1123.7) * (568 - 568) + (1123.7 + 1123.7) * (568 - 939.5) + (1123.7 + 1129.6) * (939.5 - 939.5) + (1129.6 + 1129.6) * (939.5 - 945.5) + (1129.6 + 721.8) * (945.5 - 945.5) + (721.8 + 721.8) * (945.5 - 641.6) + (721.8 + 715.8) * (641.6 - 641.6) + (715.8 + 715.8) * (641.6 - 562) + (715.8 + 1129.7) * (562 - 562)\right) * 0.5 * 0.00694$
GARAGE (Non-living area)	1134	$-\left((1413.8 + 1413.8) * (-0.8 - 562) + (1413.8 + 1129.7) * (562 - 562) + (1129.7 + 1129.7) * (562 - 568) + (1129.7 + 1123.7) * (568 - 568) + (1123.7 + 1123.7) * (568 - -0.8) + (1123.7 + 1413.8) * (-0.8 - -0.8)\right) * 0.5 * 0.00694$