

Home report

502 E 24th St,Cheyenne,WY,US



Total Area: 2622 sq. ft
Below Ground: 1012 sq. ft, Floor 2: 1610 sq. ft
Excluded: Utility 167 sq. ft, Fireplace 26 sq. ft, Embedded window 12 sq. ft, Walls: 159 sq. ft

Property summary

 **2** Floors

 **3** Bedrooms

 **3** Bathrooms

Home report

502 E 24th St,Cheyenne,WY,US



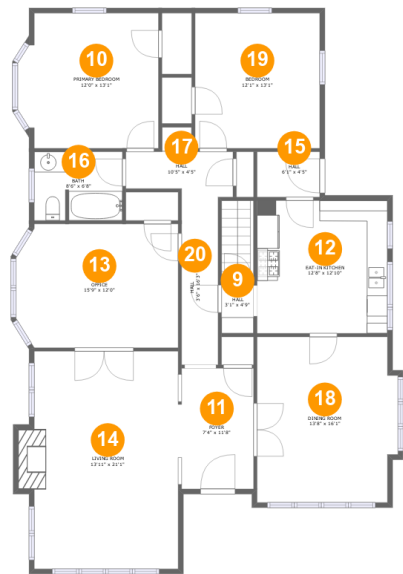
Room dimensions

Floor 1 Below ground Total:1012sqft Excluded: 183sqft

#		Max Dimensions	sqft	Included
1	Recreation Room	14'10" x 18'1"	195 sq. ft	Yes
2	Bedroom	19'7" x 13'0"	290 sq. ft	Yes
3	Bath	5'11" x 5'6"	32 sq. ft	Yes
4	Hall	7'0" x 12'3"	86 sq. ft	Yes
5	Laundry Shoot / Storage	6'11" x 5'6"	38 sq. ft	Yes
6	Utility	12'8" x 18'1"	167 sq. ft	No
7	Bath	8'5" x 6'2"	51 sq. ft	Yes
8	Family Room	15'6" x 21'1"	289 sq. ft	Yes

Home report

502 E 24th St,Cheyenne,WY,US



Room dimensions

Floor 2 Total:1610sqft Excluded: 22sqft

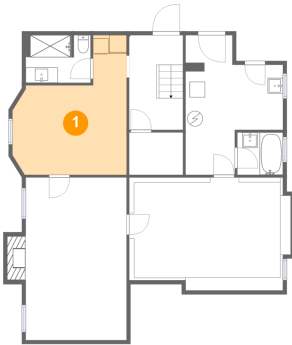
#		Max Dimensions	sqft	Included
9	Hall	3'1" x 4'9"	15 sq. ft	Yes
10	Primary Bedroom	12'0" x 13'1"	157 sq. ft	Yes
11	Foyer	7'4" x 11'8"	85 sq. ft	Yes
12	Eat-in Kitchen	12'8" x 12'10"	162 sq. ft	Yes
13	Office	15'9" x 12'0"	183 sq. ft	Yes
14	Living Room	13'11" x 21'1"	303 sq. ft	Yes
15	Hall	6'1" x 4'5"	27 sq. ft	Yes
16	Bath	8'6" x 6'8"	56 sq. ft	Yes
17	Hall	10'5" x 4'5"	48 sq. ft	Yes
18	Dining Room	13'8" x 16'1"	210 sq. ft	Yes
19	Bedroom	12'1" x 13'1"	158 sq. ft	Yes

Home report

502 E 24th St,Cheyenne,WY,US

#		Max Dimensions	sqft	Included
20	Hall	3'6" x 16'3"	57 sq. ft	Yes

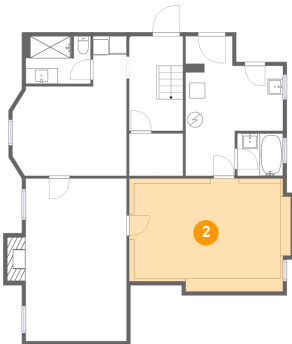
1 Floor 1 - Recreation Room



Max Dimensions: 14'10" x 18'1"
Calculated Area: 195 sq. ft
Included: Yes

Heated: Yes
Finished: Yes
Enclosed: Yes
Contiguous: Yes
Permitted: Yes
Wet space: No
Addition: No
Conversion: No

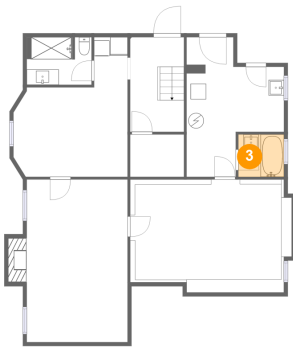
2 Floor 1 - Bedroom



Max Dimensions: 19'7" x 13'0"
Calculated Area: 290 sq. ft
Included: Yes

Heated: Yes
Finished: Yes
Enclosed: Yes
Contiguous: Yes
Permitted: Yes
Wet space: No
Addition: No
Conversion: No

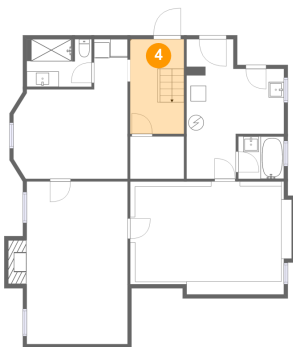
3 Floor 1 - Bath



Max Dimensions: 5'11" x 5'6"
Calculated Area: 32 sq. ft
Included: No

Heated: Yes
Finished: Yes
Enclosed: Yes
Contiguous: No
Permitted: Yes
Wet space: Yes
Addition: No
Conversion: No

4 Floor 1 - Hall



Max Dimensions: 7'0" x 12'3"
Calculated Area: 86 sq. ft
Included: Yes

Heated: Yes
Finished: Yes
Enclosed: Yes
Contiguous: Yes
Permitted: Yes
Wet space: No
Addition: No
Conversion: No

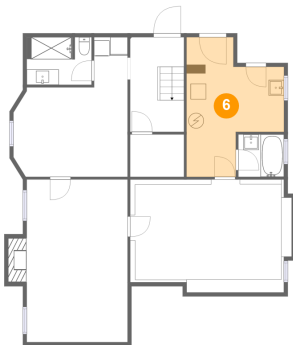
5 Floor 1 - Laundry Shoot / Storage



Max Dimensions: 6'11" x 5'6"
Calculated Area: 38 sq. ft
Included: Yes

Heated: Yes
Finished: Yes
Enclosed: Yes
Contiguous: Yes
Permitted: Yes
Wet space: No
Addition: No
Conversion: No

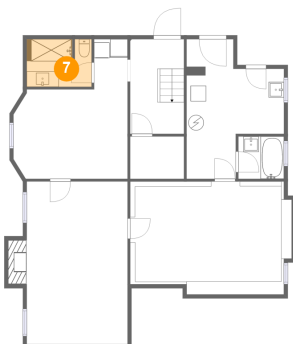
6 Floor 1 - Utility



Max Dimensions: 12'8" x 18'1"
Calculated Area: 167 sq. ft
Included: No

Heated: Yes
Finished: No
Enclosed: Yes
Contiguous: Yes
Permitted: Yes
Wet space: No
Addition: No
Conversion: No

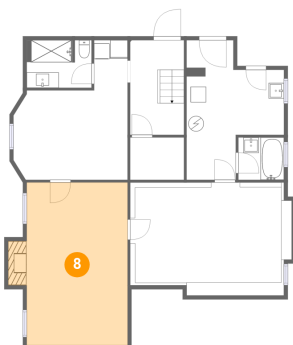
7 Floor 1 - Bath



Max Dimensions: 8'5" x 6'2"
Calculated Area: 51 sq. ft
Included: Yes

Heated: Yes
Finished: Yes
Enclosed: Yes
Contiguous: Yes
Permitted: Yes
Wet space: Yes
Addition: No
Conversion: No

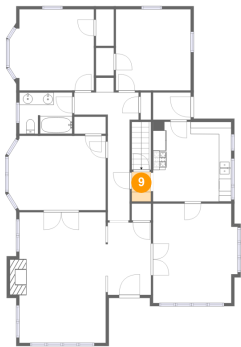
8 Floor 1 - Family Room



Max Dimensions: 15'6" x 21'1"
Calculated Area: 289 sq. ft
Included: Yes

Heated: Yes
Finished: Yes
Enclosed: Yes
Contiguous: Yes
Permitted: Yes
Wet space: No
Addition: No
Conversion: No

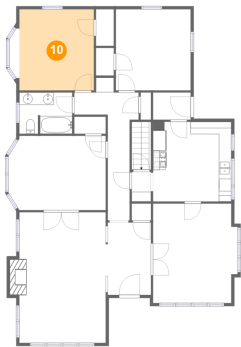
9 Floor 2 - Hall



Max Dimensions: 3'1" x 4'9"
Calculated Area: 15 sq. ft
Included: Yes

Heated: Yes
Finished: Yes
Enclosed: Yes
Contiguous: Yes
Permitted: Yes
Wet space: No
Addition: No
Conversion: No

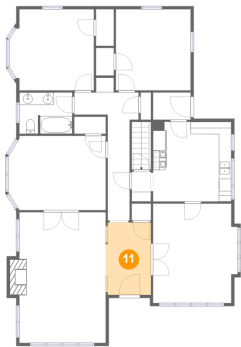
10 Floor 2 - Primary Bedroom



Max Dimensions: 12'0" x 13'1"
Calculated Area: 157 sq. ft
Included: Yes

Heated: Yes
Finished: Yes
Enclosed: Yes
Contiguous: Yes
Permitted: Yes
Wet space: No
Addition: No
Conversion: No

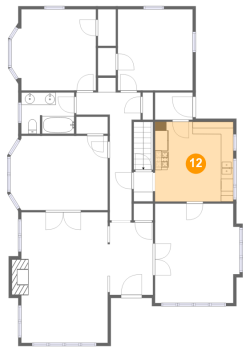
11 Floor 2 - Foyer



Max Dimensions: 7'4" x 11'8"
Calculated Area: 85 sq. ft
Included: Yes

Heated: Yes
Finished: Yes
Enclosed: Yes
Contiguous: Yes
Permitted: Yes
Wet space: No
Addition: No
Conversion: No

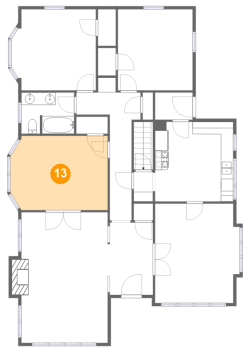
12 Floor 2 - Eat-in Kitchen



Max Dimensions: 12'8" x 12'10"
Calculated Area: 162 sq. ft
Included: Yes

Heated: Yes
Finished: Yes
Enclosed: Yes
Contiguous: Yes
Permitted: Yes
Wet space: No
Addition: No
Conversion: No

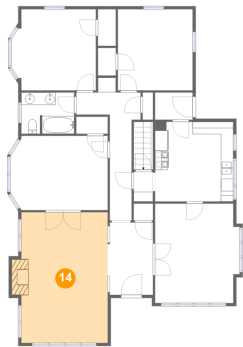
13 Floor 2 - Office



Max Dimensions: 15'9" x 12'0"
Calculated Area: 183 sq. ft
Included: Yes

Heated: Yes
Finished: Yes
Enclosed: Yes
Contiguous: Yes
Permitted: Yes
Wet space: No
Addition: No
Conversion: No

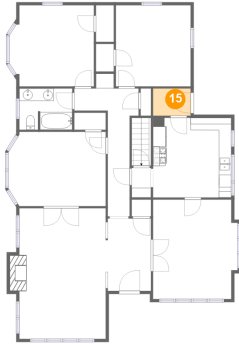
14 Floor 2 - Living Room



Max Dimensions: 13'11" x 21'1"
Calculated Area: 303 sq. ft
Included: Yes

Heated: Yes
Finished: Yes
Enclosed: Yes
Contiguous: Yes
Permitted: Yes
Wet space: No
Addition: No
Conversion: No

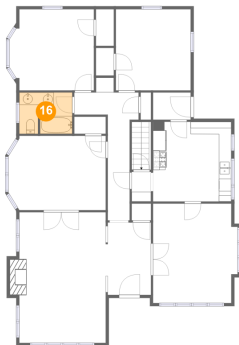
15 Floor 2 - Hall



Max Dimensions: 6'1" x 4'5"
Calculated Area: 27 sq. ft
Included: Yes

Heated: Yes
Finished: Yes
Enclosed: Yes
Contiguous: Yes
Permitted: Yes
Wet space: No
Addition: No
Conversion: No

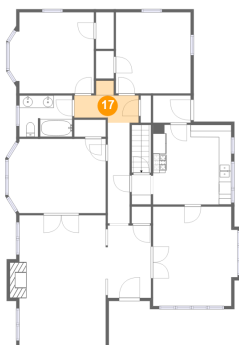
16 Floor 2 - Bath



Max Dimensions: 8'6" x 6'8"
Calculated Area: 56 sq. ft
Included: Yes

Heated: Yes
Finished: Yes
Enclosed: Yes
Contiguous: Yes
Permitted: Yes
Wet space: Yes
Addition: No
Conversion: No

17 Floor 2 - Hall



Max Dimensions: 10'5" x 4'5"
Calculated Area: 48 sq. ft
Included: Yes

Heated: Yes
Finished: Yes
Enclosed: Yes
Contiguous: Yes
Permitted: Yes
Wet space: No
Addition: No
Conversion: No

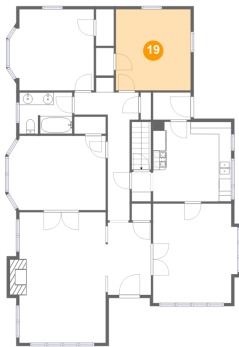
18 Floor 2 - Dining Room



Max Dimensions: 13'8" x 16'1"
Calculated Area: 210 sq. ft
Included: Yes

Heated: Yes
Finished: Yes
Enclosed: Yes
Contiguous: Yes
Permitted: Yes
Wet space: No
Addition: No
Conversion: No

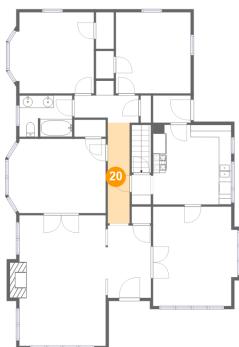
19 Floor 2 - Bedroom



Max Dimensions: 12'1" x 13'1"
Calculated Area: 158 sq. ft
Included: Yes

Heated: Yes
Finished: Yes
Enclosed: Yes
Contiguous: Yes
Permitted: Yes
Wet space: No
Addition: No
Conversion: No

20 Floor 2 - Hall



Max Dimensions: 3'6" x 16'3"
Calculated Area: 57 sq. ft
Included: Yes

Heated: Yes
Finished: Yes
Enclosed: Yes
Contiguous: Yes
Permitted: Yes
Wet space: No
Addition: No
Conversion: No