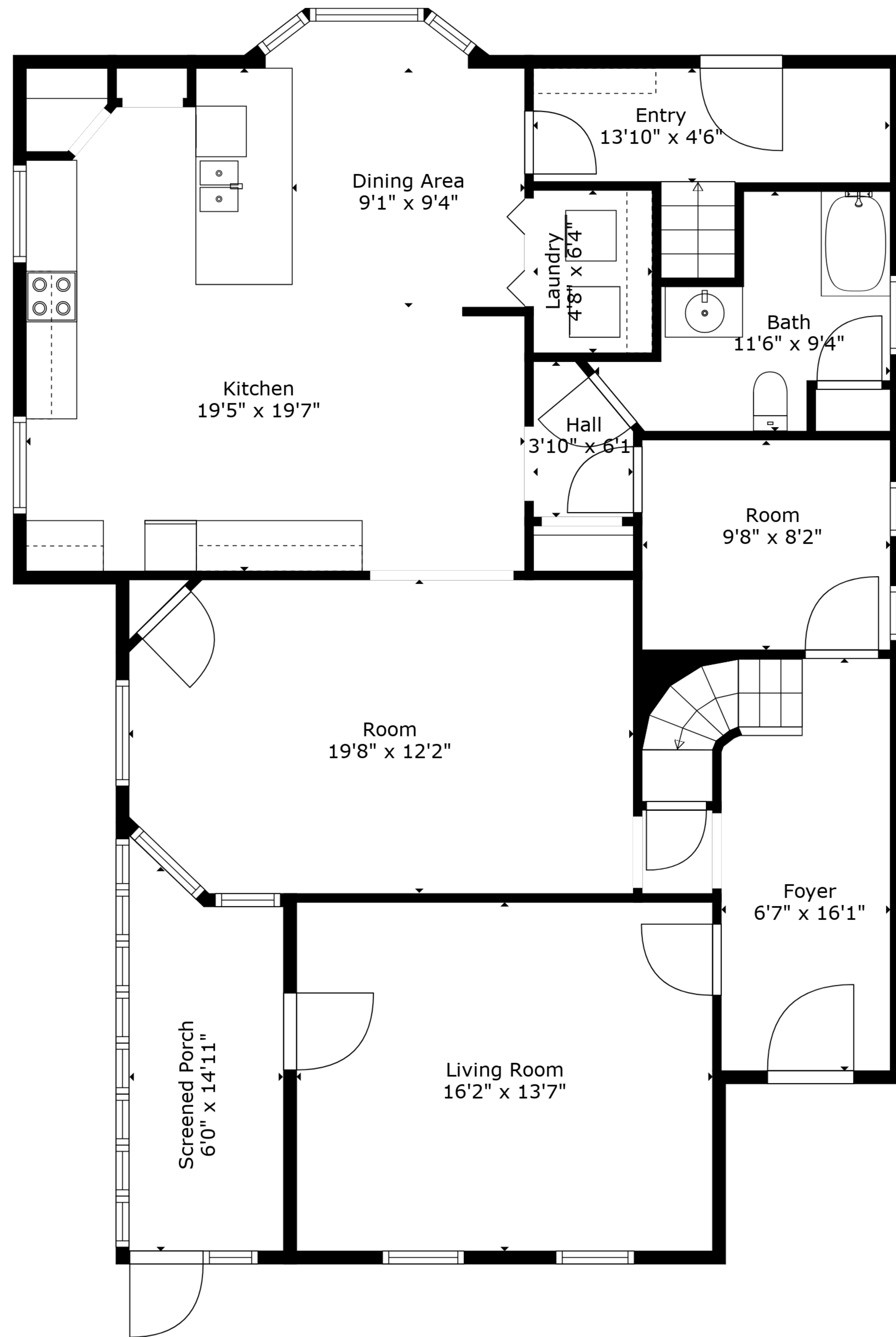


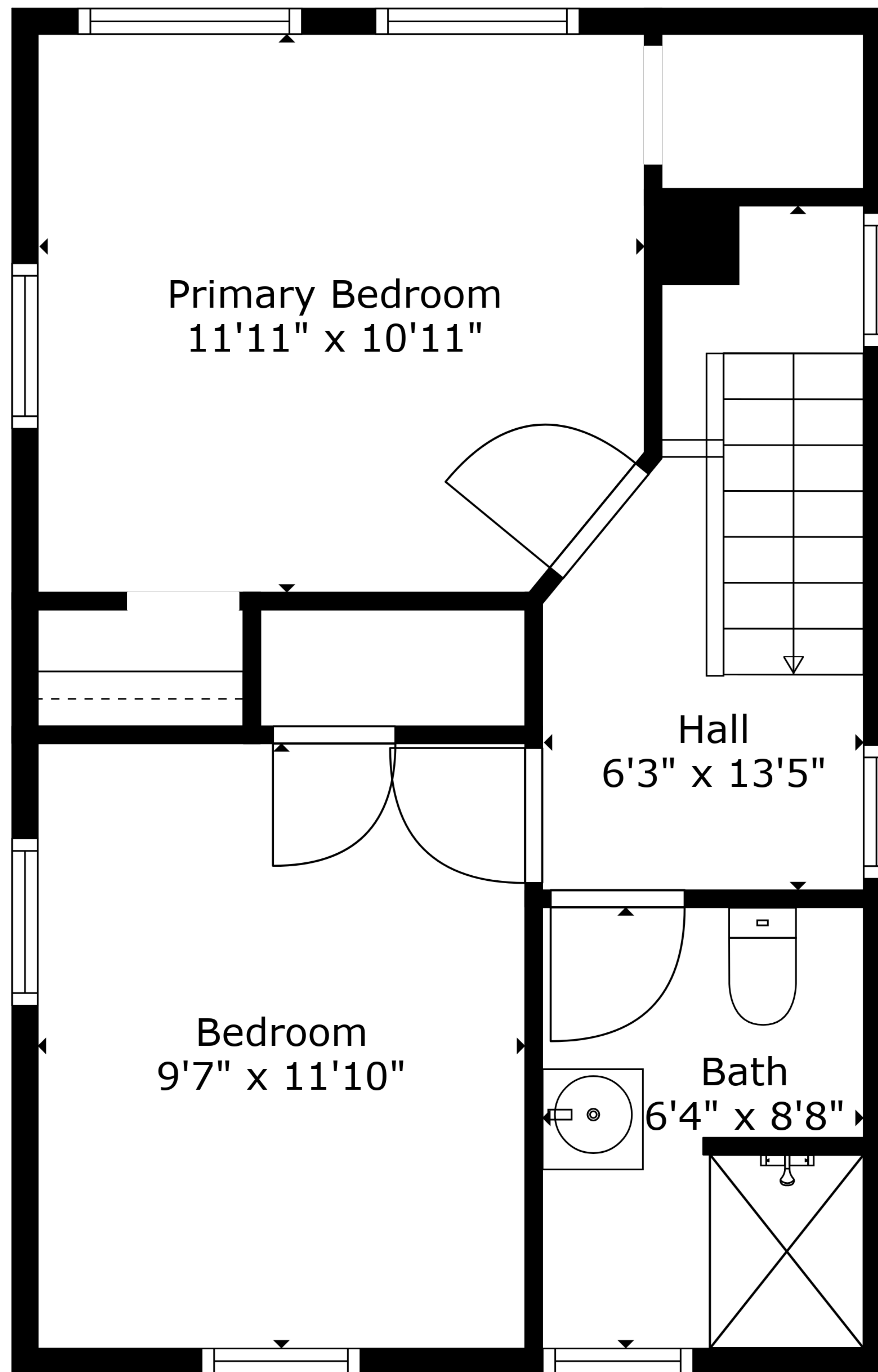
Basement  
23'4" x 33'4"

**TOTAL: 1649 sq. ft**  
BELOW GROUND: 0 sq. ft, FLOOR 2: 1230 sq. ft, FLOOR 3: 419 sq. ft  
EXCLUDED AREAS: BASEMENT: 697 sq. ft, SCREENED PORCH: 85 sq. ft, ENTRY: 73 sq. ft,  
BAY WINDOW: 13 sq. ft



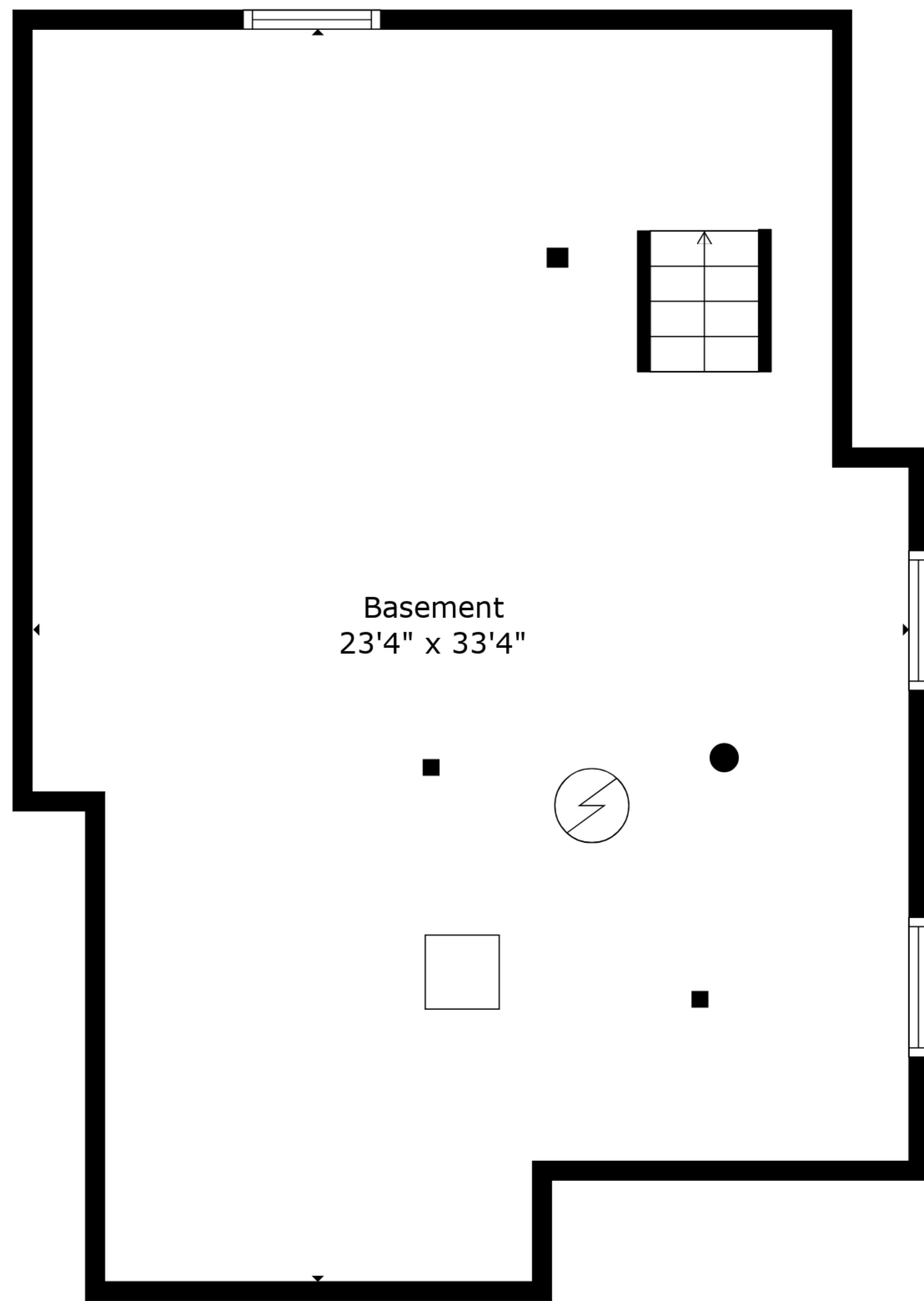
**TOTAL: 1649 sq. ft**

BELOW GROUND: 0 sq. ft, FLOOR 2: 1230 sq. ft, FLOOR 3: 419 sq. ft  
 EXCLUDED AREAS: BASEMENT: 697 sq. ft, SCREENED PORCH: 85 sq. ft, ENTRY: 73 sq. ft,  
 BAY WINDOW: 13 sq. ft

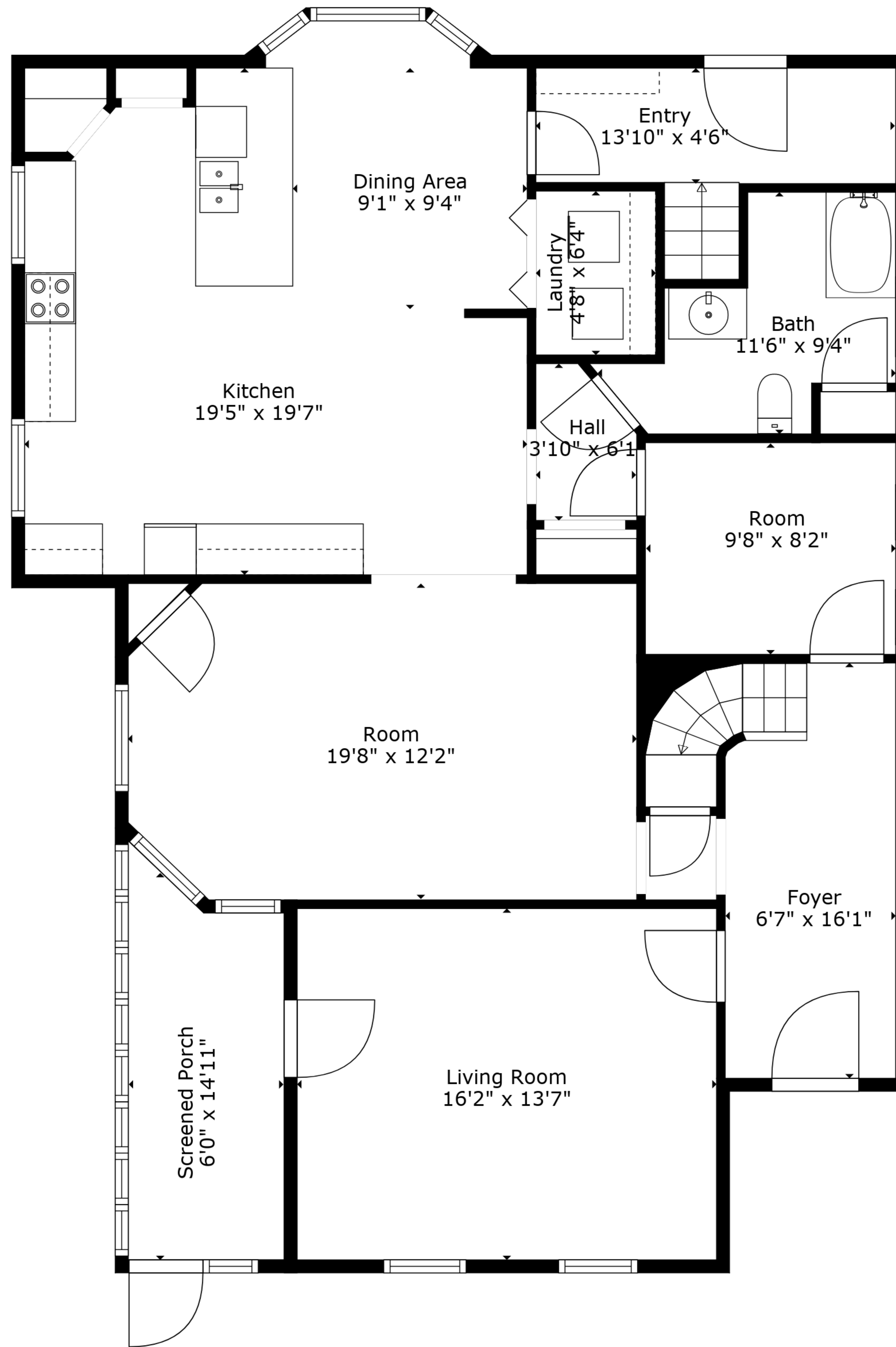


**TOTAL: 1649 sq. ft**

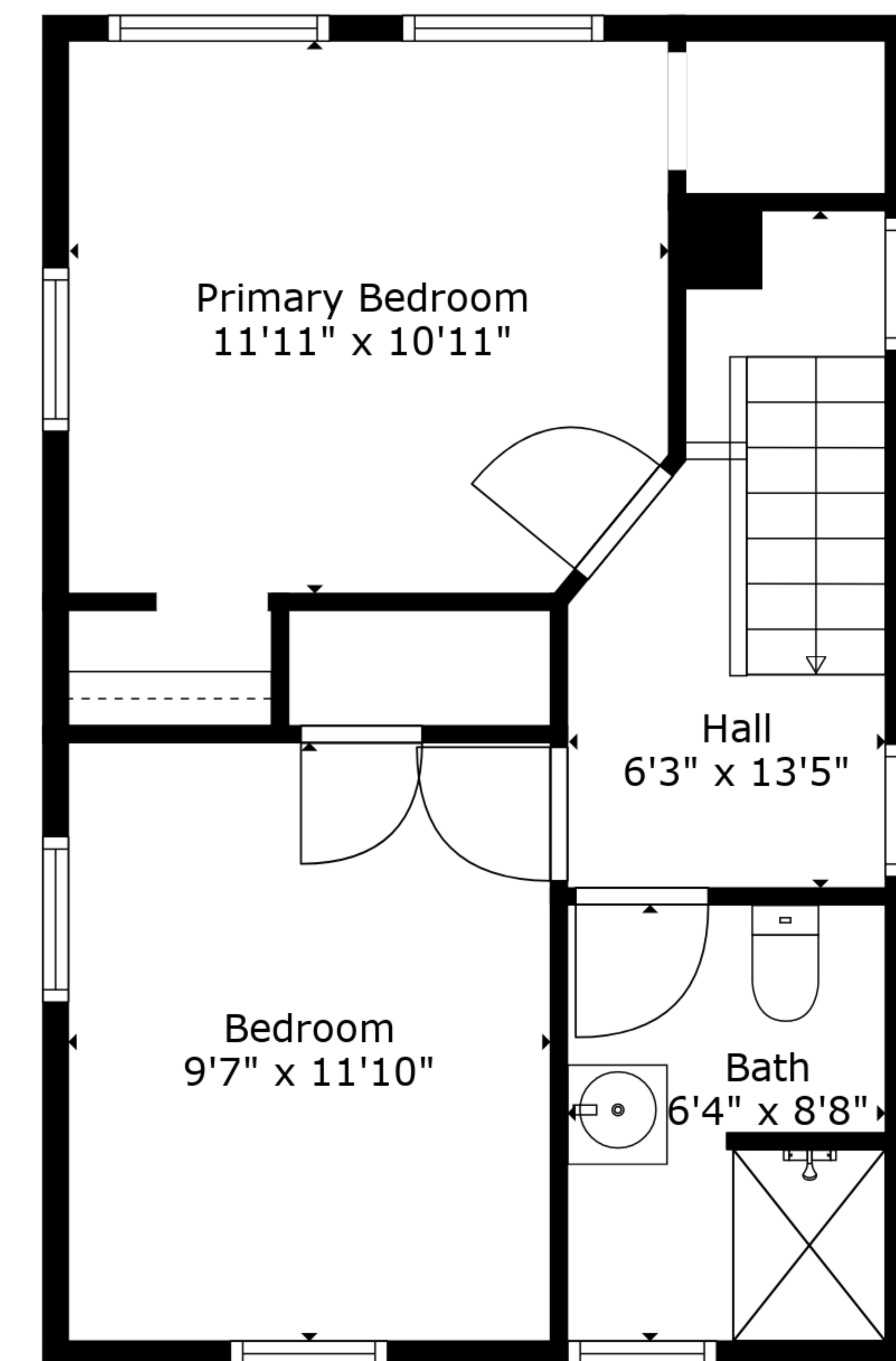
BELOW GROUND: 0 sq. ft, FLOOR 2: 1230 sq. ft, FLOOR 3: 419 sq. ft  
EXCLUDED AREAS: BASEMENT: 697 sq. ft, SCREENED PORCH: 85 sq. ft, ENTRY: 73 sq. ft,  
BAY WINDOW: 13 sq. ft



Floor 1



Floor 2



Floor 3

**TOTAL: 1649 sq. ft**  
 BELOW GROUND: 0 sq. ft, FLOOR 2: 1230 sq. ft, FLOOR 3: 419 sq. ft  
 EXCLUDED AREAS: BASEMENT: 697 sq. ft, SCREENED PORCH: 85 sq. ft, ENTRY: 73 sq. ft,  
 BAY WINDOW: 13 sq. ft