

Home report

5 West Mill Street, Sugar Grove, Warren County, Pennsylvania,
United States, 16350



Total Area: 2025 sq. ft

Below Ground: 0 sq. ft, Floor 2: 1295 sq. ft, Floor 3: 730 sq. ft

Excluded: Basement 677 sq. ft, Deck 243 sq. ft, Patio 38 sq. ft, Porch 168 sq. ft, Shed 171 sq. ft, Garage 283 sq. ft, Walls: 251 sq. ft

Property summary

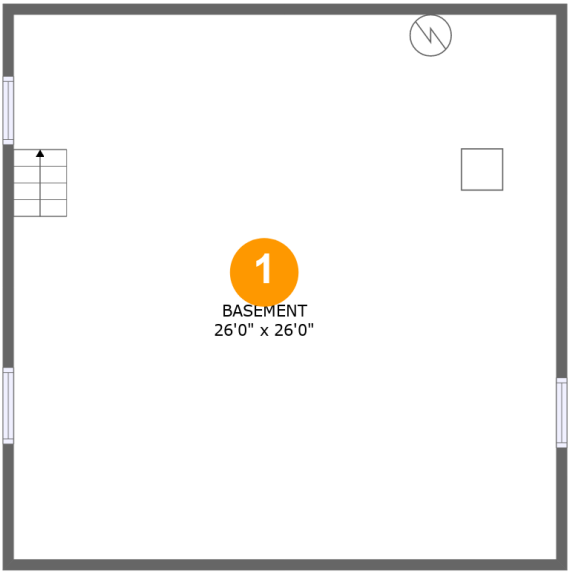
**3** Floors

**3** Bedrooms

**2** Bathrooms

**1** Garages

5 West Mill Street, Sugar Grove, Warren County, Pennsylvania,
United States, 16350



Room dimensions

Floor 1 Below ground Total:0sqft Excluded: 677sqft

#		Max Dimensions	sqft	Included
1	Basement	26'0" x 26'0"	677 sq. ft	No

Home report

5 West Mill Street, Sugar Grove, Warren County, Pennsylvania,
United States, 16350



Room dimensions

Floor 2 Total:1295sqft Excluded: 903sqft

#		Max Dimensions	sqft	Included
2	Deck	24'3" x 10'4"	216 sq. ft	No
3	Patio	8'8" x 4'4"	38 sq. ft	No
4	Dining Area	10'6" x 11'6"	121 sq. ft	Yes
5	Hall	11'8" x 12'0"	140 sq. ft	Yes
6	Shed	8'11" x 19'1"	171 sq. ft	No
7	Hall	3'7" x 4'3"	43 sq. ft	Yes
8	Deck	6'8" x 4'1"	27 sq. ft	No
9	Pantry	4'4" x 9'1"	40 sq. ft	Yes
10	Garage	14'10" x 19'2"	283 sq. ft	No
11	Room	9'9" x 14'8"	143 sq. ft	Yes
12	Bath	11'1" x 8'6"	93 sq. ft	Yes

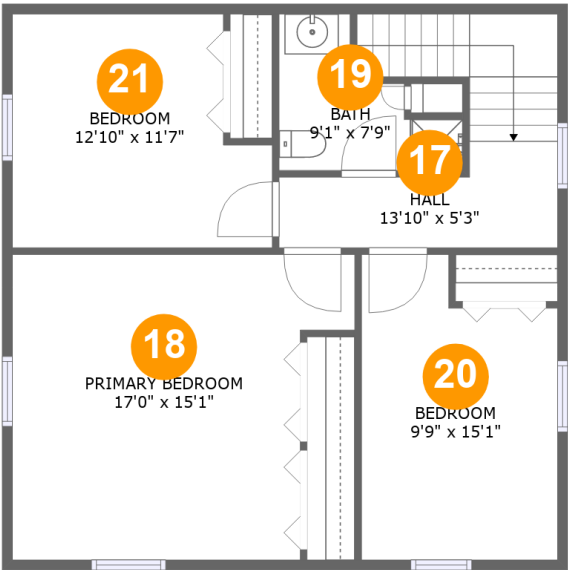
Home report

**5 West Mill Street, Sugar Grove, Warren County, Pennsylvania,
United States, 16350**

#		Max Dimensions	sqft	Included
13	Porch	25'0" x 6'8"	168 sq. ft	No
14	Living Room	16'11" x 14'9"	249 sq. ft	Yes
15	Room	8'6" x 23'3"	197 sq. ft	Yes
16	Kitchen	15'2" x 11'9"	171 sq. ft	Yes

Home report

5 West Mill Street, Sugar Grove, Warren County, Pennsylvania,
United States, 16350



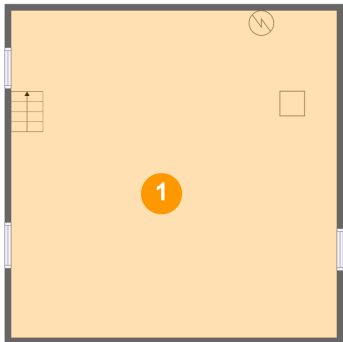
Room dimensions

Floor 3 Total:730sqft Excluded: 0sqft

#		Max Dimensions	sqft	Included
17	Hall	13'10" x 5'3"	101 sq. ft	Yes
18	Primary Bedroom	17'0" x 15'1"	226 sq. ft	Yes
19	Bath	9'1" x 7'9"	46 sq. ft	Yes
20	Bedroom	9'9" x 15'1"	133 sq. ft	Yes
21	Bedroom	12'10" x 11'7"	133 sq. ft	Yes

5 West Mill Street, Sugar Grove, Warren County, Pennsylvania,
United States, 16350

1 Floor 1 - Basement



Max Dimensions: 26'0" x 26'0"
Calculated Area: 677 sq. ft
Included: No

Heated: Yes
Finished: No
Enclosed: Yes
Contiguous: Yes
Permitted: Yes
Wet space: No
Addition: No
Conversion: No

2 Floor 2 - Deck



Max Dimensions: 24'3" x 10'4"
Calculated Area: 216 sq. ft
Included: No

Heated: No
Finished: Yes
Enclosed: No
Contiguous: Yes
Permitted: Yes
Wet space: No
Addition: No
Conversion: No

5 West Mill Street, Sugar Grove, Warren County, Pennsylvania,
United States, 16350

3 Floor 2 - Patio



Max Dimensions: 8'8" x 4'4"
Calculated Area: 38 sq. ft
Included: No

Heated: No
Finished: Yes
Enclosed: No
Contiguous: Yes
Permitted: Yes
Wet space: No
Addition: No
Conversion: No

4 Floor 2 - Dining Area



Max Dimensions: 10'6" x 11'6"
Calculated Area: 121 sq. ft
Included: Yes

Heated: Yes
Finished: Yes
Enclosed: Yes
Contiguous: Yes
Permitted: Yes
Wet space: No
Addition: No
Conversion: No

5 Floor 2 - Hall



Max Dimensions: 11'8" x 12'0"
Calculated Area: 140 sq. ft
Included: Yes

Heated: Yes
Finished: Yes
Enclosed: Yes
Contiguous: Yes
Permitted: Yes
Wet space: No
Addition: No
Conversion: No

5 West Mill Street, Sugar Grove, Warren County, Pennsylvania,
United States, 16350

6 Floor 2 - Shed



Max Dimensions: 8'11" x 19'1"
Calculated Area: 171 sq. ft
Included: No

Heated: No
Finished: No
Enclosed: No
Contiguous: Yes
Permitted: Yes
Wet space: No
Addition: No
Conversion: No

7 Floor 2 - Hall



Max Dimensions: 3'7" x 4'3"
Calculated Area: 43 sq. ft
Included: Yes

Heated: Yes
Finished: Yes
Enclosed: Yes
Contiguous: Yes
Permitted: Yes
Wet space: No
Addition: No
Conversion: No

8 Floor 2 - Deck



Max Dimensions: 6'8" x 4'1"
Calculated Area: 27 sq. ft
Included: No

Heated: No
Finished: Yes
Enclosed: No
Contiguous: Yes
Permitted: Yes
Wet space: No
Addition: No
Conversion: No

5 West Mill Street, Sugar Grove, Warren County, Pennsylvania,
United States, 16350

9 Floor 2 - Pantry



Max Dimensions: 4'4" x 9'1"
Calculated Area: 40 sq. ft
Included: Yes

Heated: Yes
Finished: Yes
Enclosed: Yes
Contiguous: Yes
Permitted: Yes
Wet space: No
Addition: No
Conversion: No

10 Floor 2 - Garage



Max Dimensions: 14'10" x 19'2"
Calculated Area: 283 sq. ft
Included: No

Heated: No
Finished: No
Enclosed: Yes
Contiguous: Yes
Permitted: Yes
Wet space: No
Addition: No
Conversion: No

11 Floor 2 - Room



Max Dimensions: 9'9" x 14'8"
Calculated Area: 143 sq. ft
Included: Yes

Heated: Yes
Finished: Yes
Enclosed: Yes
Contiguous: Yes
Permitted: Yes
Wet space: No
Addition: No
Conversion: No

5 West Mill Street, Sugar Grove, Warren County, Pennsylvania,
United States, 16350

12 Floor 2 - Bath



Max Dimensions: 11'1" x 8'6"
Calculated Area: 93 sq. ft
Included: Yes

Heated: Yes
Finished: Yes
Enclosed: Yes
Contiguous: Yes
Permitted: Yes
Wet space: Yes
Addition: No
Conversion: No

13 Floor 2 - Porch



Max Dimensions: 25'0" x 6'8"
Calculated Area: 168 sq. ft
Included: No

Heated: No
Finished: Yes
Enclosed: No
Contiguous: Yes
Permitted: Yes
Wet space: No
Addition: No
Conversion: No

14 Floor 2 - Living Room



Max Dimensions: 16'11" x 14'9"
Calculated Area: 249 sq. ft
Included: Yes

Heated: Yes
Finished: Yes
Enclosed: Yes
Contiguous: Yes
Permitted: Yes
Wet space: No
Addition: No
Conversion: No

5 West Mill Street, Sugar Grove, Warren County, Pennsylvania,
United States, 16350

15 Floor 2 - Room



Max Dimensions: 8'6" x 23'3"
Calculated Area: 197 sq. ft
Included: Yes

Heated: Yes
Finished: Yes
Enclosed: Yes
Contiguous: Yes
Permitted: Yes
Wet space: No
Addition: No
Conversion: No

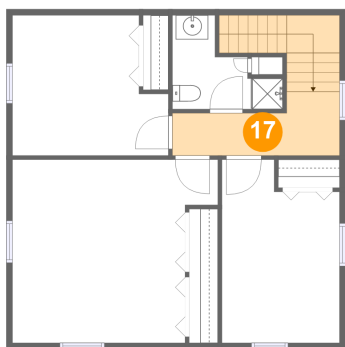
16 Floor 2 - Kitchen



Max Dimensions: 15'2" x 11'9"
Calculated Area: 171 sq. ft
Included: Yes

Heated: Yes
Finished: Yes
Enclosed: Yes
Contiguous: Yes
Permitted: Yes
Wet space: No
Addition: No
Conversion: No

17 Floor 3 - Hall

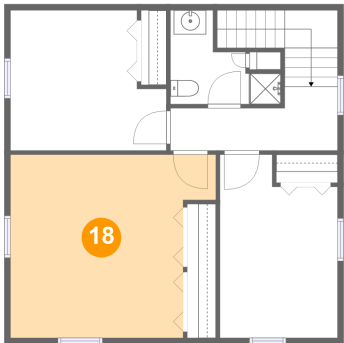


Max Dimensions: 13'10" x 5'3"
Calculated Area: 101 sq. ft
Included: Yes

Heated: Yes
Finished: Yes
Enclosed: Yes
Contiguous: Yes
Permitted: Yes
Wet space: No
Addition: No
Conversion: No

5 West Mill Street, Sugar Grove, Warren County, Pennsylvania,
United States, 16350

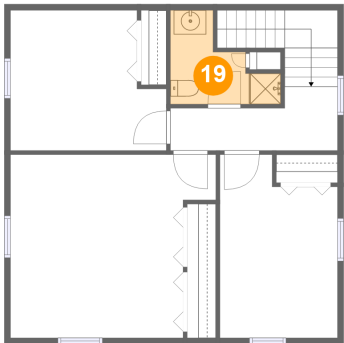
18 Floor 3 - Primary Bedroom



Max Dimensions: 17'0" x 15'1"
Calculated Area: 226 sq. ft
Included: Yes

Heated: Yes
Finished: Yes
Enclosed: Yes
Contiguous: Yes
Permitted: Yes
Wet space: No
Addition: No
Conversion: No

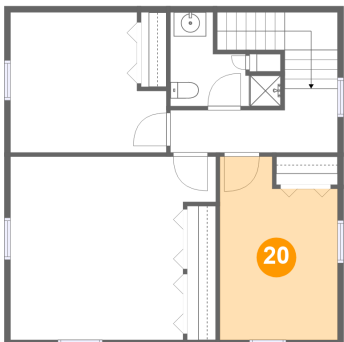
19 Floor 3 - Bath



Max Dimensions: 9'1" x 7'9"
Calculated Area: 46 sq. ft
Included: Yes

Heated: Yes
Finished: Yes
Enclosed: Yes
Contiguous: Yes
Permitted: Yes
Wet space: Yes
Addition: No
Conversion: No

20 Floor 3 - Bedroom

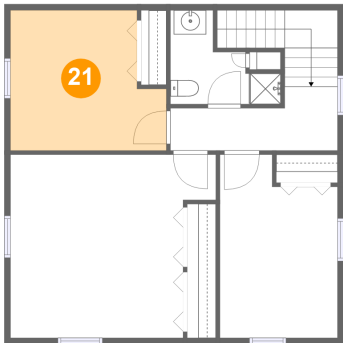


Max Dimensions: 9'9" x 15'1"
Calculated Area: 133 sq. ft
Included: Yes

Heated: Yes
Finished: Yes
Enclosed: Yes
Contiguous: Yes
Permitted: Yes
Wet space: No
Addition: No
Conversion: No

5 West Mill Street, Sugar Grove, Warren County, Pennsylvania,
United States, 16350

21 Floor 3 - Bedroom



Max Dimensions: 12'10" x 11'7"
Calculated Area: 133 sq. ft
Included: Yes

Heated: Yes
Finished: Yes
Enclosed: Yes
Contiguous: Yes
Permitted: Yes
Wet space: No
Addition: No
Conversion: No