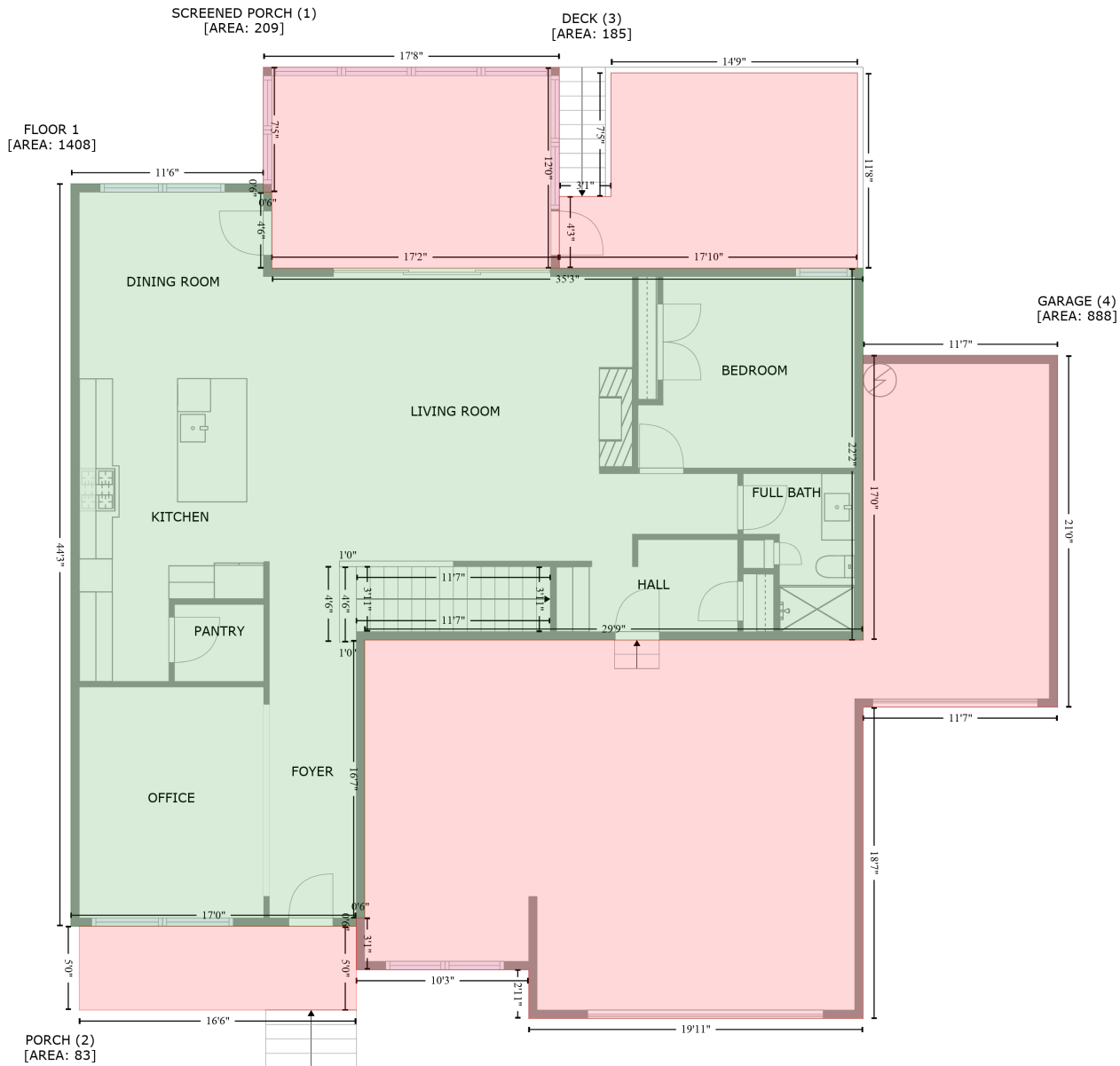


105 River Ledge Drive, Holly Springs, Wake County, North Carolina, United States, 27540

Gross Living Area: 3266 sq. ft



Space	Area (sq. ft)	Calculation
FLOOR 1 (Living area)	1408	Coordinate Polygon Area Algorithm using inches $-\left((165.6 + 303.5) * (53.5 - 53.5) + (303.5 + 303.5) * (53.5 - 59.5) + (303.5 + 309.5) * (59.5 - 59.5) + (309.5 + 309.5) * (59.5 - 113.9) + (309.5 + 732.9) * (113.9 - 113.9) + (732.9 + 732.9) * (113.9 - 380.1) + (732.9 + 376) * (380.1 - 380.1) + (376 + 376) * (380.1 - 579) + (376 + 370) * (579 - 579) + (370 + 370) * (579 - 585) + (370 + 165.6) * (585 - 585) + (165.6 + 165.6) * (585 - 53.5)\right) * 0.5 * 0.00694$
SCREENED PORCH	209	$-\left((515.4 + 515.4) * (-29.9 - 113.9) + (515.4 + 309.5) * (113.9 - 113.9) + (309.5 + 309.5) * (113.9 - 113.9) + (309.5 + 309.5) * (113.9 - 113.9) + (309.5 + 309.5) * (113.9 - 113.9) + (309.5 + 309.5) * (113.9 - 113.9) + (309.5 + 309.5) * (113.9 - 113.9) + (309.5 + 309.5) * (113.9 - 113.9) + (309.5 + 309.5) * (113.9 - 113.9) + (309.5 + 309.5) * (113.9 - 113.9)\right) * 0.5 * 0.00694$

105 River Ledge Drive, Holly Springs, Wake County, North Carolina, United States, 27540

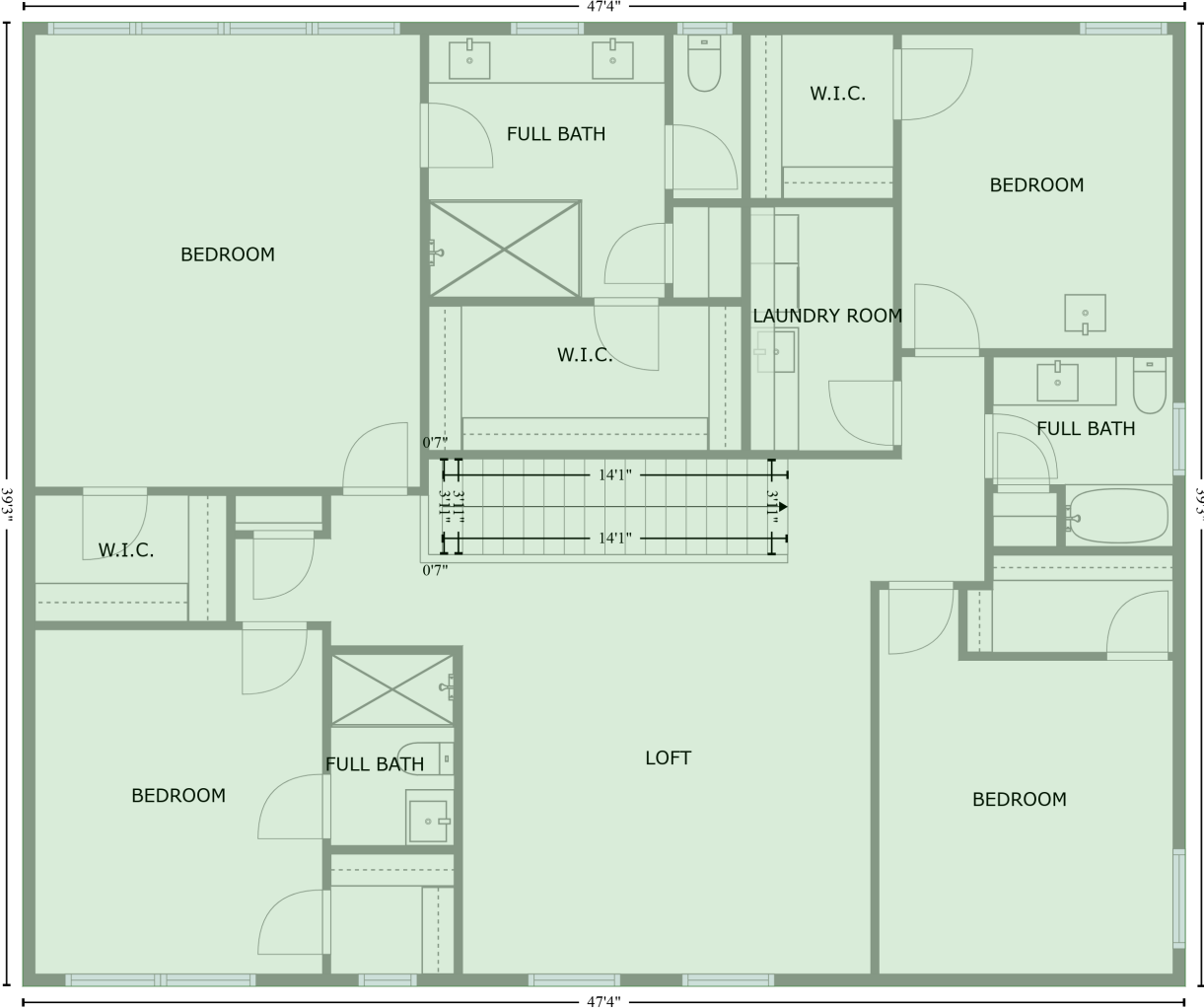
Gross Living Area: 3266 sq. ft

Space	Area (sq. ft)	Calculation <small>Coordinate Polygon Area Algorithm using inches</small>
(Non-living area)		$59.5 + (309.5 + 303.5) * (59.5 - 59.5) + (303.5 + 303.5) * (59.5 - -29.9) + (303.5 + 515.4) * (-29.9 - -29.9) * 0.5 * 0.00694$
PORCH (Non-living area)	83	$-((370 + 370) * (585 - 644.9) + (370 + 171.6) * (644.9 - 644.9) + (171.6 + 171.6) * (644.9 - 585) + (171.6 + 370) * (585 - 585)) * 0.5 * 0.00694$
DECK (Non-living area)	185	$-((728.9 + 728.9) * (-25.9 - 113.9) + (728.9 + 515.4) * (113.9 - 113.9) + (515.4 + 515.4) * (113.9 - 62.8) + (515.4 + 552.4) * (62.8 - 62.8) + (552.4 + 552.4) * (62.8 - -25.9) + (552.4 + 728.9) * (-25.9 - -25.9)) * 0.5 * 0.00694$
GARAGE (Non-living area)	888	$-((872.3 + 872.3) * (176.3 - 428.1) + (872.3 + 732.9) * (428.1 - 428.1) + (732.9 + 732.9) * (428.1 - 650.9) + (732.9 + 493.5) * (650.9 - 650.9) + (493.5 + 493.5) * (650.9 - 616.1) + (493.5 + 370) * (616.1 - 616.1) + (370 + 370) * (616.1 - 579) + (370 + 376) * (579 - 579) + (376 + 376) * (579 - 380.1) + (376 + 732.9) * (380.1 - 380.1) + (732.9 + 732.9) * (380.1 - 176.3) + (732.9 + 872.3) * (176.3 - 176.3)) * 0.5 * 0.00694$

105 River Ledge Drive, Holly Springs, Wake County, North Carolina, United States, 27540

Gross Living Area: 3266 sq. ft

FLOOR 2
[AREA: 1858]



Space	Area (sq. ft)	Calculation <small>Coordinate Polygon Area Algorithm using inches</small>
FLOOR 2 (Living area)	1858	$-((732.9 + 732.9) * (114 - 585.1) + (732.9 + 165.1) * (585.1 - 585.1) + (165.1 + 165.1) * (585.1 - 114) + (165.1 + 732.9) * (114 - 114)) * 0.5 * 0.00694$