

70 Sandy Ridge Circle, Penhook, Franklin County, Virginia,
United States, 24137



ENTRY LEVEL

Floor 1: 2237 sq. ft, Floor 2: 2622 sq. ft

Property summary



Home report

**70 Sandy Ridge Circle, Penhook, Franklin County, Virginia,
United States, 24137**



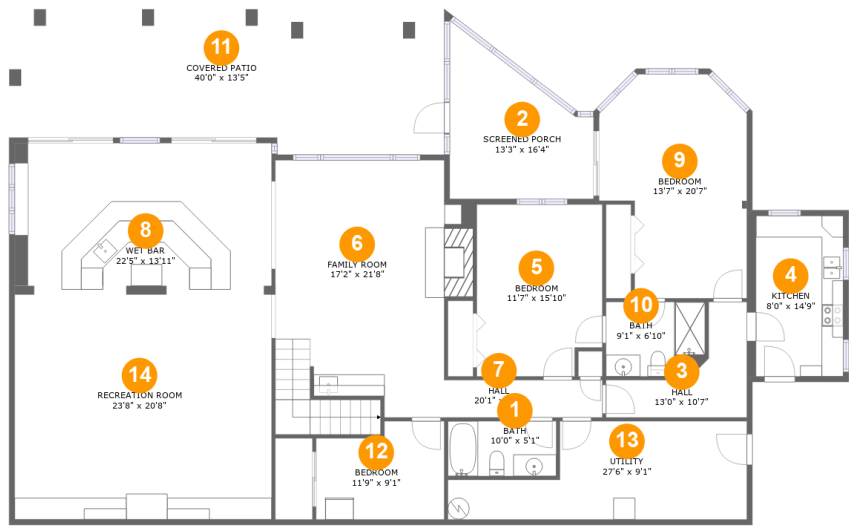
1
Half baths



1
Garages

Home report

70 Sandy Ridge Circle, Penhook, Franklin County, Virginia,
United States, 24137



Room dimensions

Floor 1 Total:2237sqft Excluded: 842sqft

#		Max Dimensions	sqft	Included
1	Bath	10'0" x 5'1"	50 sq. ft	Yes
2	Screened Porch	13'3" x 16'4"	152 sq. ft	No
3	Hall	13'0" x 10'7"	72 sq. ft	Yes
4	Kitchen	8'0" x 14'9"	119 sq. ft	Yes
5	Bedroom	11'7" x 15'10"	176 sq. ft	Yes
6	Family Room	17'2" x 21'8"	386 sq. ft	Yes
7	Hall	20'1" x 3'5"	65 sq. ft	Yes
8	Wet Bar	22'5" x 13'11"	330 sq. ft	Yes
9	Bedroom	13'7" x 20'7"	238 sq. ft	Yes
10	Bath	9'1" x 6'10"	61 sq. ft	Yes
11	Covered Patio	40'0" x 13'5"	497 sq. ft	No

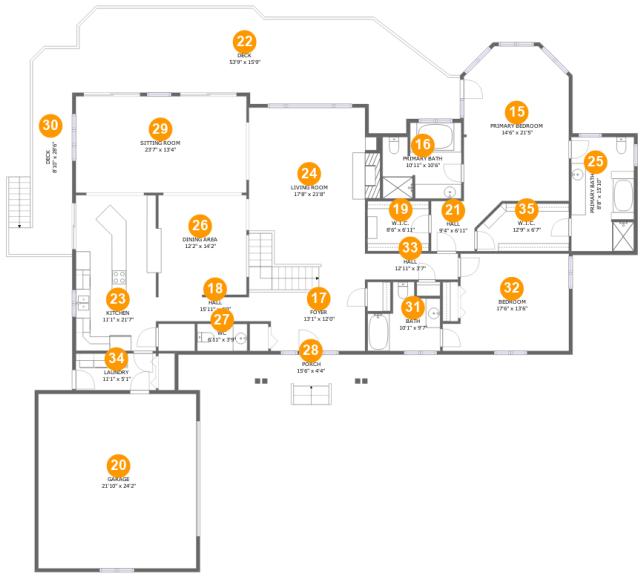
Home report

70 Sandy Ridge Circle, Penhook, Franklin County, Virginia,
United States, 24137

#		Max Dimensions	sqft	Included
12	Bedroom	11'9" x 9'1"	97 sq. ft	Yes
13	Utility	27'6" x 9'1"	193 sq. ft	No
14	Recreation Room	23'8" x 20'8"	489 sq. ft	Yes

Home report

70 Sandy Ridge Circle, Penhook, Franklin County, Virginia,
United States, 24137



Room dimensions

Floor 2 Total:2622sqft Excluded: 1363sqft

#		Max Dimensions	sqft	Included
15	Primary Bedroom	14'6" x 21'5"	294 sq. ft	Yes
16	Primary Bath	10'11" x 10'6"	105 sq. ft	Yes
17	Foyer	13'1" x 12'0"	185 sq. ft	Yes
18	Hall	15'11" x 4'0"	55 sq. ft	Yes
19	W.I.C.	8'6" x 6'11"	59 sq. ft	Yes
20	Garage	21'10" x 24'2"	529 sq. ft	No
21	Hall	9'4" x 6'11"	49 sq. ft	Yes
22	Deck	53'9" x 15'9"	604 sq. ft	No
23	Kitchen	11'1" x 21'7"	240 sq. ft	Yes
24	Living Room	17'8" x 21'8"	350 sq. ft	Yes
25	Primary Bath	8'8" x 15'10"	136 sq. ft	Yes

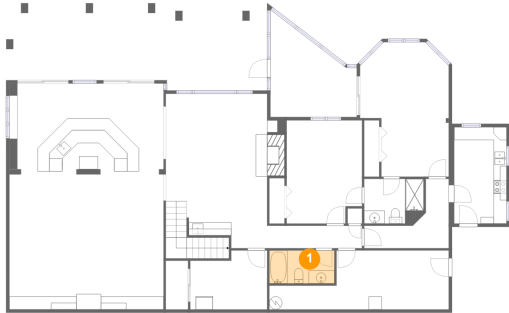
Home report

**70 Sandy Ridge Circle, Penhook, Franklin County, Virginia,
United States, 24137**

#		Max Dimensions	sqft	Included
26	Dining Area	12'2" x 14'2"	178 sq. ft	Yes
27	WC	6'11" x 3'9"	26 sq. ft	Yes
28	Porch	15'6" x 4'4"	64 sq. ft	No
29	Sitting Room	23'7" x 13'4"	316 sq. ft	Yes
30	Deck	8'10" x 28'6"	167 sq. ft	No
31	Bath	10'1" x 9'7"	73 sq. ft	Yes
32	Bedroom	17'6" x 13'6"	212 sq. ft	Yes
33	Hall	12'11" x 3'7"	46 sq. ft	Yes
34	Laundry	11'1" x 5'1"	57 sq. ft	Yes
35	W.I.C.	12'9" x 6'7"	78 sq. ft	Yes

70 Sandy Ridge Circle, Penhook, Franklin County, Virginia,
United States, 24137

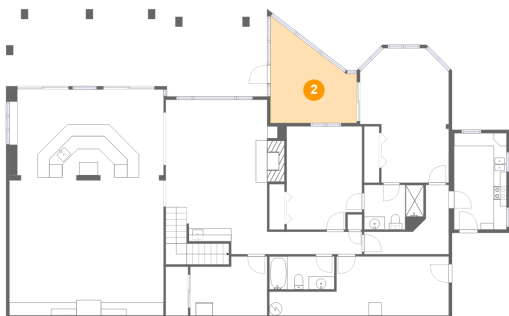
1 Floor 1 - Bath



Max Dimensions: 10'0" x 5'1"
Calculated Area: 50 sq. ft
Included: Yes

Heated: Yes
Finished: Yes
Enclosed: Yes
Contiguous: Yes
Permitted: Yes
Wet space: Yes
Addition: No
Conversion: No

2 Floor 1 - Screened Porch

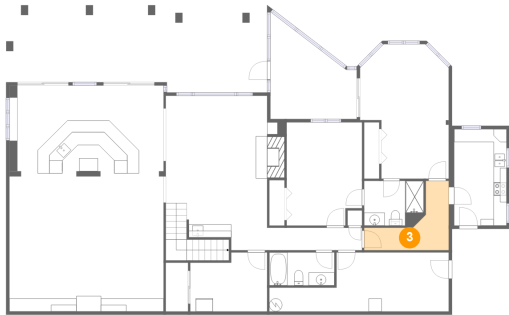


Max Dimensions: 13'3" x 16'4"
Calculated Area: 152 sq. ft
Included: No

Heated: No
Finished: Yes
Enclosed: No
Contiguous: Yes
Permitted: Yes
Wet space: No
Addition: No
Conversion: No

70 Sandy Ridge Circle, Penhook, Franklin County, Virginia,
United States, 24137

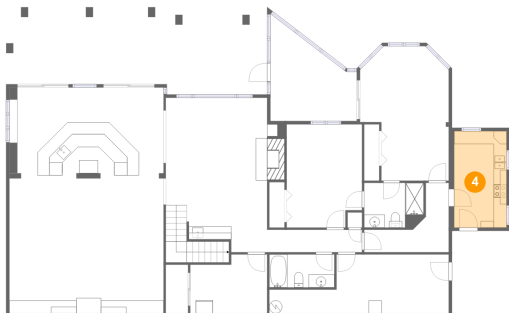
3 Floor 1 - Hall



Max Dimensions: 13'0" x 10'7"
Calculated Area: 72 sq. ft
Included: Yes

Heated: Yes
Finished: Yes
Enclosed: Yes
Contiguous: Yes
Permitted: Yes
Wet space: No
Addition: No
Conversion: No

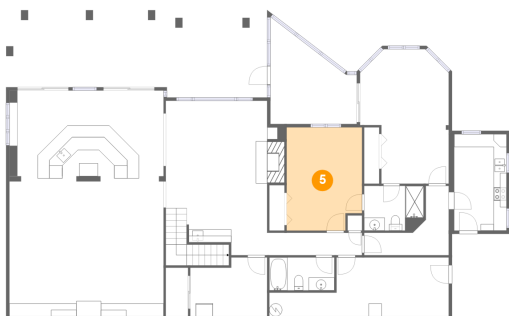
4 Floor 1 - Kitchen



Max Dimensions: 8'0" x 14'9"
Calculated Area: 119 sq. ft
Included: Yes

Heated: Yes
Finished: Yes
Enclosed: Yes
Contiguous: Yes
Permitted: Yes
Wet space: No
Addition: No
Conversion: No

5 Floor 1 - Bedroom

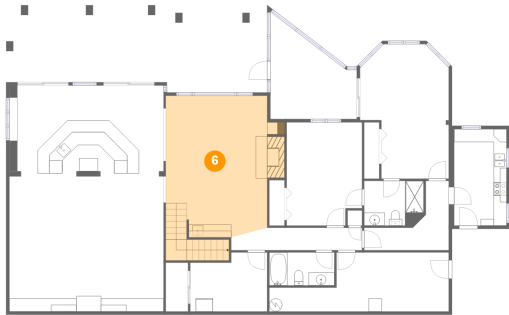


Max Dimensions: 11'7" x 15'10"
Calculated Area: 176 sq. ft
Included: Yes

Heated: Yes
Finished: Yes
Enclosed: Yes
Contiguous: Yes
Permitted: Yes
Wet space: No
Addition: No
Conversion: No

70 Sandy Ridge Circle, Penhook, Franklin County, Virginia,
United States, 24137

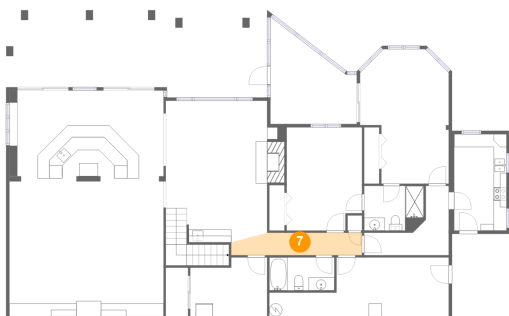
6 Floor 1 - Family Room



Max Dimensions: 17'2" x 21'8"
Calculated Area: 386 sq. ft
Included: Yes

Heated: Yes
Finished: Yes
Enclosed: Yes
Contiguous: Yes
Permitted: Yes
Wet space: No
Addition: No
Conversion: No

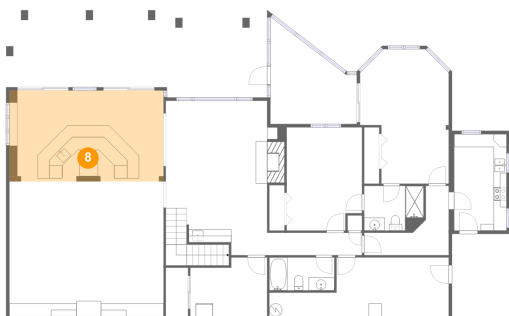
7 Floor 1 - Hall



Max Dimensions: 20'1" x 3'5"
Calculated Area: 65 sq. ft
Included: Yes

Heated: Yes
Finished: Yes
Enclosed: Yes
Contiguous: Yes
Permitted: Yes
Wet space: No
Addition: No
Conversion: No

8 Floor 1 - Wet Bar

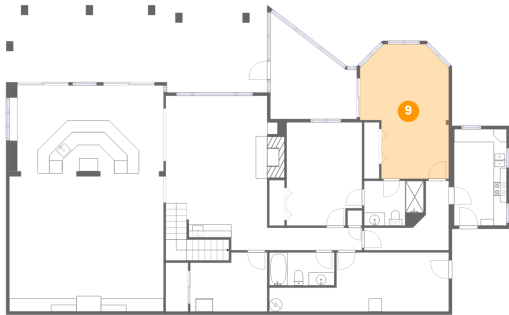


Max Dimensions: 22'5" x 13'11"
Calculated Area: 330 sq. ft
Included: Yes

Heated: Yes
Finished: Yes
Enclosed: Yes
Contiguous: Yes
Permitted: Yes
Wet space: No
Addition: No
Conversion: No

70 Sandy Ridge Circle, Penhook, Franklin County, Virginia,
United States, 24137

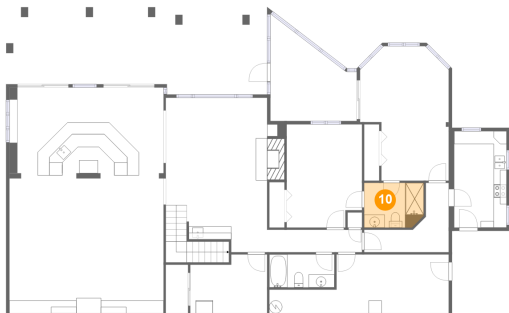
9 Floor 1 - Bedroom



Max Dimensions: 13'7" x 20'7"
Calculated Area: 238 sq. ft
Included: Yes

Heated: Yes
Finished: Yes
Enclosed: Yes
Contiguous: Yes
Permitted: Yes
Wet space: No
Addition: No
Conversion: No

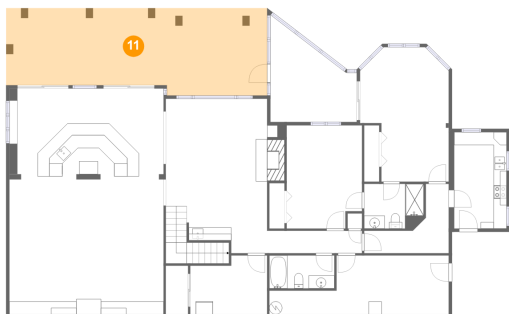
10 Floor 1 - Bath



Max Dimensions: 9'1" x 6'10"
Calculated Area: 61 sq. ft
Included: Yes

Heated: Yes
Finished: Yes
Enclosed: Yes
Contiguous: Yes
Permitted: Yes
Wet space: Yes
Addition: No
Conversion: No

11 Floor 1 - Covered Patio

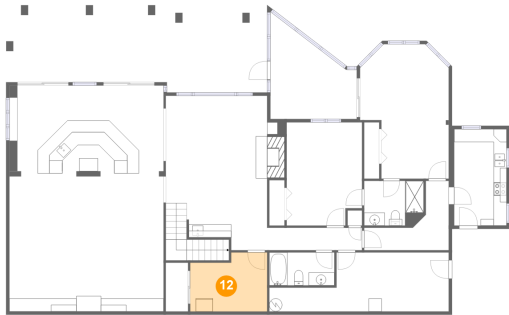


Max Dimensions: 40'0" x 13'5"
Calculated Area: 497 sq. ft
Included: No

Heated: No
Finished: Yes
Enclosed: No
Contiguous: Yes
Permitted: Yes
Wet space: No
Addition: No
Conversion: No

70 Sandy Ridge Circle, Penhook, Franklin County, Virginia,
United States, 24137

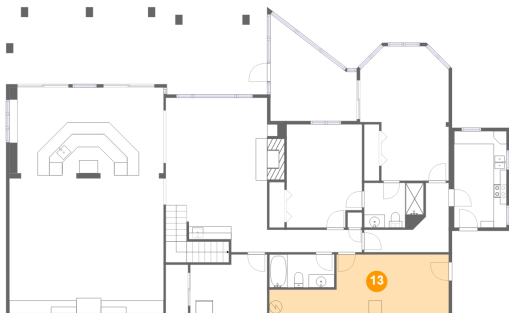
12 Floor 1 - Bedroom



Max Dimensions: 11'9" x 9'1"
Calculated Area: 97 sq. ft
Included: Yes

Heated: Yes
Finished: Yes
Enclosed: Yes
Contiguous: Yes
Permitted: Yes
Wet space: No
Addition: No
Conversion: No

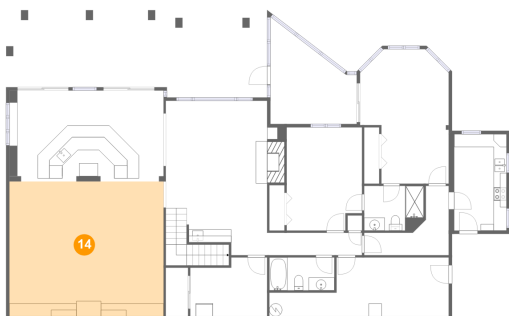
13 Floor 1 - Utility



Max Dimensions: 27'6" x 9'1"
Calculated Area: 193 sq. ft
Included: No

Heated: Yes
Finished: No
Enclosed: Yes
Contiguous: Yes
Permitted: Yes
Wet space: No
Addition: No
Conversion: No

14 Floor 1 - Recreation Room

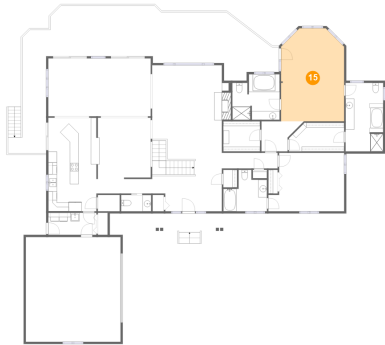


Max Dimensions: 23'8" x 20'8"
Calculated Area: 489 sq. ft
Included: Yes

Heated: Yes
Finished: Yes
Enclosed: Yes
Contiguous: Yes
Permitted: Yes
Wet space: No
Addition: No
Conversion: No

70 Sandy Ridge Circle, Penhook, Franklin County, Virginia,
United States, 24137

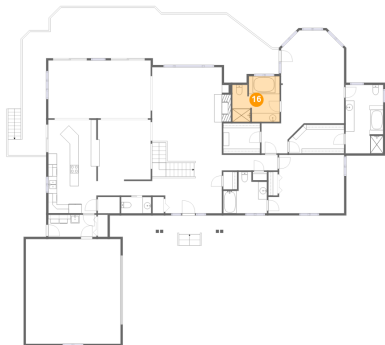
15 Floor 2 - Primary Bedroom



Max Dimensions: 14'6" x 21'5"
Calculated Area: 294 sq. ft
Included: Yes

Heated: Yes
Finished: Yes
Enclosed: Yes
Contiguous: Yes
Permitted: Yes
Wet space: No
Addition: No
Conversion: No

16 Floor 2 - Primary Bath



Max Dimensions: 10'11" x 10'6"
Calculated Area: 105 sq. ft
Included: Yes

Heated: Yes
Finished: Yes
Enclosed: Yes
Contiguous: Yes
Permitted: Yes
Wet space: Yes
Addition: No
Conversion: No

17 Floor 2 - Foyer



Max Dimensions: 13'1" x 12'0"
Calculated Area: 185 sq. ft
Included: Yes

Heated: Yes
Finished: Yes
Enclosed: Yes
Contiguous: Yes
Permitted: Yes
Wet space: No
Addition: No
Conversion: No

70 Sandy Ridge Circle, Penhook, Franklin County, Virginia,
United States, 24137

18 Floor 2 - Hall



Max Dimensions: 15'11" x 4'0"
Calculated Area: 55 sq. ft
Included: Yes

Heated: Yes
Finished: Yes
Enclosed: Yes
Contiguous: Yes
Permitted: Yes
Wet space: No
Addition: No
Conversion: No

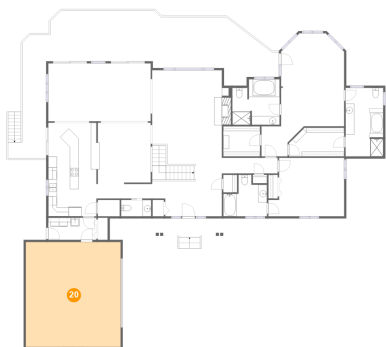
19 Floor 2 - W.I.C.



Max Dimensions: 8'6" x 6'11"
Calculated Area: 59 sq. ft
Included: Yes

Heated: Yes
Finished: Yes
Enclosed: Yes
Contiguous: Yes
Permitted: Yes
Wet space: No
Addition: No
Conversion: No

20 Floor 2 - Garage

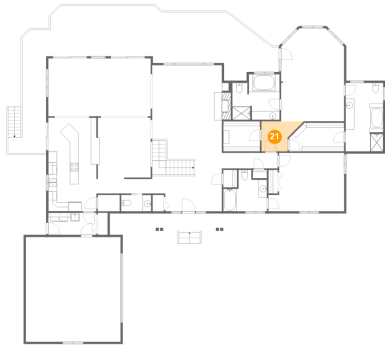


Max Dimensions: 21'10" x 24'2"
Calculated Area: 529 sq. ft
Included: No

Heated: No
Finished: No
Enclosed: Yes
Contiguous: Yes
Permitted: Yes
Wet space: No
Addition: No
Conversion: No

70 Sandy Ridge Circle, Penhook, Franklin County, Virginia,
United States, 24137

21 Floor 2 - Hall



Max Dimensions: 9'4" x 6'11"
Calculated Area: 49 sq. ft
Included: Yes

Heated: Yes
Finished: Yes
Enclosed: Yes
Contiguous: Yes
Permitted: Yes
Wet space: No
Addition: No
Conversion: No

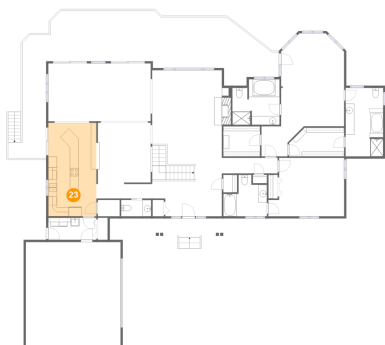
22 Floor 2 - Deck



Max Dimensions: 53'9" x 15'9"
Calculated Area: 604 sq. ft
Included: No

Heated: No
Finished: Yes
Enclosed: No
Contiguous: Yes
Permitted: Yes
Wet space: No
Addition: No
Conversion: No

23 Floor 2 - Kitchen

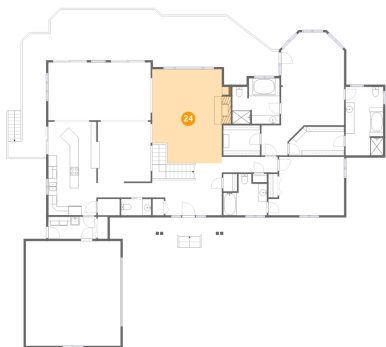


Max Dimensions: 11'1" x 21'7"
Calculated Area: 240 sq. ft
Included: Yes

Heated: Yes
Finished: Yes
Enclosed: Yes
Contiguous: Yes
Permitted: Yes
Wet space: No
Addition: No
Conversion: No

70 Sandy Ridge Circle, Penhook, Franklin County, Virginia,
United States, 24137

24 Floor 2 - Living Room



Max Dimensions: 17'8" x 21'8"
Calculated Area: 350 sq. ft
Included: Yes

Heated: Yes
Finished: Yes
Enclosed: Yes
Contiguous: Yes
Permitted: Yes
Wet space: No
Addition: No
Conversion: No

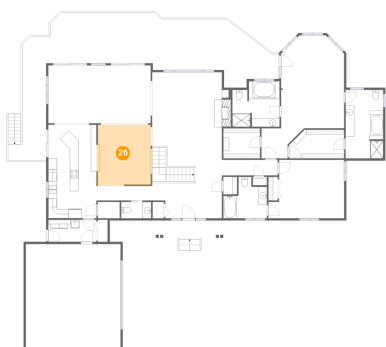
25 Floor 2 - Primary Bath



Max Dimensions: 8'8" x 15'10"
Calculated Area: 136 sq. ft
Included: Yes

Heated: Yes
Finished: Yes
Enclosed: Yes
Contiguous: Yes
Permitted: Yes
Wet space: Yes
Addition: No
Conversion: No

26 Floor 2 - Dining Area



Max Dimensions: 12'2" x 14'2"
Calculated Area: 178 sq. ft
Included: Yes

Heated: Yes
Finished: Yes
Enclosed: Yes
Contiguous: Yes
Permitted: Yes
Wet space: No
Addition: No
Conversion: No

70 Sandy Ridge Circle, Penhook, Franklin County, Virginia,
United States, 24137

27 Floor 2 - WC



Max Dimensions: 6'11" x 3'9"
Calculated Area: 26 sq. ft
Included: Yes

Heated: Yes
Finished: Yes
Enclosed: Yes
Contiguous: Yes
Permitted: Yes
Wet space: Yes
Addition: No
Conversion: No

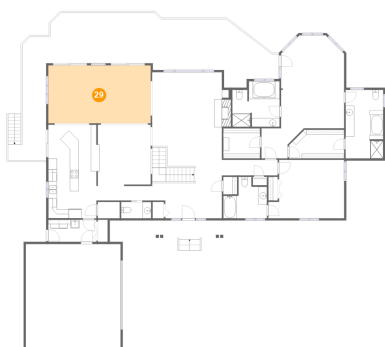
28 Floor 2 - Porch



Max Dimensions: 15'6" x 4'4"
Calculated Area: 64 sq. ft
Included: No

Heated: No
Finished: Yes
Enclosed: No
Contiguous: Yes
Permitted: Yes
Wet space: No
Addition: No
Conversion: No

29 Floor 2 - Sitting Room

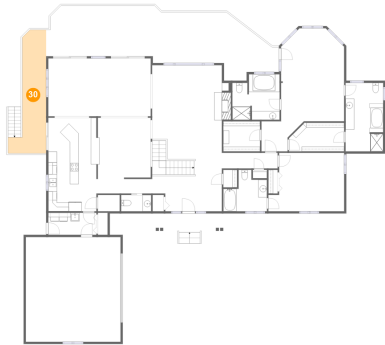


Max Dimensions: 23'7" x 13'4"
Calculated Area: 316 sq. ft
Included: Yes

Heated: Yes
Finished: Yes
Enclosed: Yes
Contiguous: Yes
Permitted: Yes
Wet space: No
Addition: No
Conversion: No

70 Sandy Ridge Circle, Penhook, Franklin County, Virginia,
United States, 24137

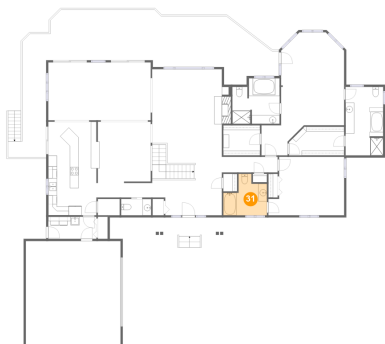
30 Floor 2 - Deck



Max Dimensions: 8'10" x 28'6"
Calculated Area: 167 sq. ft
Included: No

Heated: No
Finished: Yes
Enclosed: No
Contiguous: Yes
Permitted: Yes
Wet space: No
Addition: No
Conversion: No

31 Floor 2 - Bath



Max Dimensions: 10'1" x 9'7"
Calculated Area: 73 sq. ft
Included: Yes

Heated: Yes
Finished: Yes
Enclosed: Yes
Contiguous: Yes
Permitted: Yes
Wet space: Yes
Addition: No
Conversion: No

32 Floor 2 - Bedroom

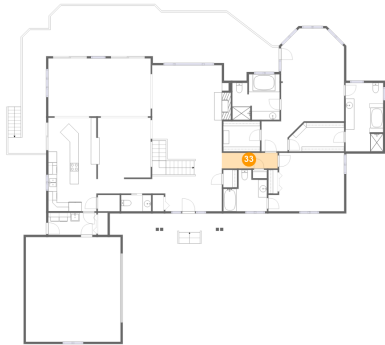


Max Dimensions: 17'6" x 13'6"
Calculated Area: 212 sq. ft
Included: Yes

Heated: Yes
Finished: Yes
Enclosed: Yes
Contiguous: Yes
Permitted: Yes
Wet space: No
Addition: No
Conversion: No

70 Sandy Ridge Circle, Penhook, Franklin County, Virginia,
United States, 24137

33 Floor 2 - Hall



Max Dimensions: 12'11" x 3'7"
Calculated Area: 46 sq. ft
Included: Yes

Heated: Yes
Finished: Yes
Enclosed: Yes
Contiguous: Yes
Permitted: Yes
Wet space: No
Addition: No
Conversion: No

34 Floor 2 - Laundry



Max Dimensions: 11'1" x 5'1"
Calculated Area: 57 sq. ft
Included: Yes

Heated: Yes
Finished: Yes
Enclosed: Yes
Contiguous: Yes
Permitted: Yes
Wet space: No
Addition: No
Conversion: No

35 Floor 2 - W.I.C.



Max Dimensions: 12'9" x 6'7"
Calculated Area: 78 sq. ft
Included: Yes

Heated: Yes
Finished: Yes
Enclosed: Yes
Contiguous: Yes
Permitted: Yes
Wet space: No
Addition: No
Conversion: No