

220 Cloud Leap Trail, Huntsville, AL, US




Property Summary

 **1** garages

 **3** bedrooms

 **2** bathrooms

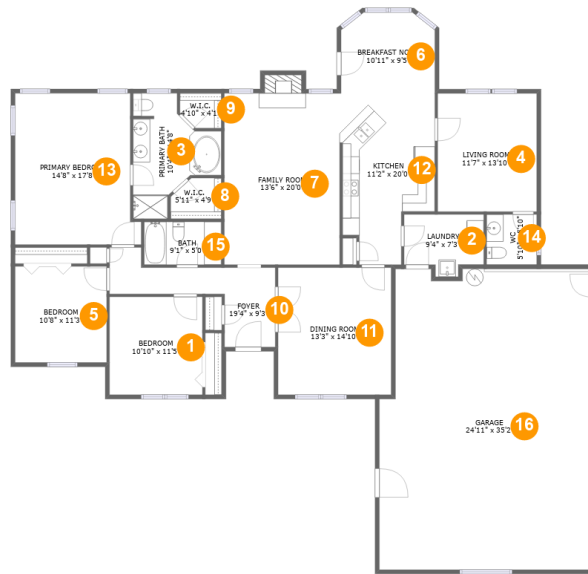
 **1** half baths

 **1** floors

 **2,024** Gross Living Area sqft

 **2,923** total sqft

220 Cloud Leap Trail, Huntsville, AL, US



Room Dimensions

Floor 1

Total sqft: 2923

Living area: 2024

#	Room name	Dimensions	Area (sqft)	Counted as Living Area
1	Bedroom	10'10" x 11'5"	124 sq. ft	Yes
2	Laundry	9'4" x 7'3"	58 sq. ft	Yes
3	Primary Bath	10'4" x 14'8"	101 sq. ft	Yes
4	Living Room	11'7" x 13'10"	160 sq. ft	Yes
5	Bedroom	10'8" x 11'3"	120 sq. ft	Yes
6	Breakfast Nook	10'11" x 9'5"	98 sq. ft	Yes
7	Family Room	13'6" x 20'0"	279 sq. ft	Yes
8	W.i.c.	5'11" x 4'9"	26 sq. ft	Yes
9	W.i.c.	4'10" x 4'1"	18 sq. ft	Yes
10	Foyer	19'4" x 9'3"	105 sq. ft	Yes
11	Dining Room	13'3" x 14'10"	196 sq. ft	Yes

Scan captured on Mon, 07 Oct 2024 21:55:03 GMT

Information is calculated by CubiCasa technology; deemed highly reliable but not guaranteed.

220 Cloud Leap Trail, Huntsville, AL, US

#	Room name	Dimensions	Area (sqft)	Counted as Living Area
12	Kitchen	11'2" x 20'0"	187 sq. ft	Yes
13	Primary Bedroom	14'8" x 17'8"	241 sq. ft	Yes
14	Wc	5'10" x 5'10"	34 sq. ft	Yes
15	Bath	9'1" x 5'0"	45 sq. ft	Yes
16	Garage	24'11" x 35'2"	843 sq. ft	No

220 Cloud Leap Trail, Huntsville, AL, US

1 Floor 1 - Bedroom



Dimensions: 10'10" x 11'5"
Area: 124 sq. ft
Counted as Living Area:
Yes

Heated: Yes
Finished: Yes
Enclosed: Yes
Contiguous:
Yes
Permitted: Yes
Wet Space: No
Addition: No
Conversion: No

2 Floor 1 - Laundry



Dimensions: 9'4" x 7'3"
Area: 58 sq. ft
Counted as Living Area:
Yes

Heated: Yes
Finished: Yes
Enclosed: Yes
Contiguous:
Yes
Permitted: Yes
Wet Space: No
Addition: No
Conversion: No

220 Cloud Leap Trail, Huntsville, AL, US

3 Floor 1 - Primary Bath



Dimensions: 10'4" x 14'8"
Area: 101 sq. ft
Counted as Living Area:
Yes

Heated: Yes
Finished: Yes
Enclosed: Yes
Contiguous:
Yes
Permitted: Yes
Wet Space: Yes
Addition: No
Conversion: No

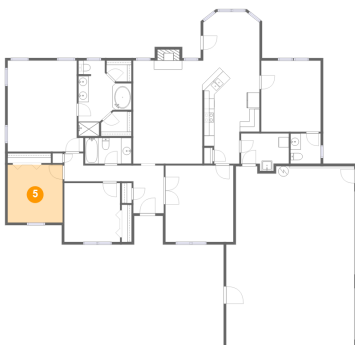
4 Floor 1 - Living Room



Dimensions: 11'7" x 13'10"
Area: 160 sq. ft
Counted as Living Area:
Yes

Heated: Yes
Finished: Yes
Enclosed: Yes
Contiguous:
Yes
Permitted: Yes
Wet Space: No
Addition: No
Conversion: No

5 Floor 1 - Bedroom



Dimensions: 10'8" x 11'3"
Area: 120 sq. ft
Counted as Living Area:
Yes

Heated: Yes
Finished: Yes
Enclosed: Yes
Contiguous:
Yes
Permitted: Yes
Wet Space: No
Addition: No
Conversion: No

220 Cloud Leap Trail, Huntsville, AL, US

6 Floor 1 - Breakfast Nook



Dimensions: 10'11" x 9'5"
Area: 98 sq. ft
Counted as Living Area:
Yes

Heated: Yes
Finished: Yes
Enclosed: Yes
Contiguous:
Yes
Permitted: Yes
Wet Space: No
Addition: No
Conversion: No

7 Floor 1 - Family Room



Dimensions: 13'6" x 20'0"
Area: 279 sq. ft
Counted as Living Area:
Yes

Heated: Yes
Finished: Yes
Enclosed: Yes
Contiguous:
Yes
Permitted: Yes
Wet Space: No
Addition: No
Conversion: No

8 Floor 1 - W.i.c.



Dimensions: 5'11" x 4'9"
Area: 26 sq. ft
Counted as Living Area:
Yes

Heated: Yes
Finished: Yes
Enclosed: Yes
Contiguous:
Yes
Permitted: Yes
Wet Space: No
Addition: No
Conversion: No

220 Cloud Leap Trail, Huntsville, AL, US

9 Floor 1 - W.i.c.



Dimensions: 4'10" x 4'1"
Area: 18 sq. ft
Counted as Living Area:
Yes

Heated: Yes
Finished: Yes
Enclosed: Yes
Contiguous:
Yes
Permitted: Yes
Wet Space: No
Addition: No
Conversion: No

10 Floor 1 - Foyer



Dimensions: 19'4" x 9'3"
Area: 105 sq. ft
Counted as Living Area:
Yes

Heated: Yes
Finished: Yes
Enclosed: Yes
Contiguous:
Yes
Permitted: Yes
Wet Space: No
Addition: No
Conversion: No

11 Floor 1 - Dining Room



Dimensions: 13'3" x 14'10"
Area: 196 sq. ft
Counted as Living Area:
Yes

Heated: Yes
Finished: Yes
Enclosed: Yes
Contiguous:
Yes
Permitted: Yes
Wet Space: No
Addition: No
Conversion: No

220 Cloud Leap Trail, Huntsville, AL, US

12 Floor 1 - Kitchen



Dimensions: 11'2" x 20'0"
Area: 187 sq. ft
Counted as Living Area:
Yes

Heated: Yes
Finished: Yes
Enclosed: Yes
Contiguous:
Yes
Permitted: Yes
Wet Space: No
Addition: No
Conversion: No

13 Floor 1 - Primary Bedroom



Dimensions: 14'8" x 17'8"
Area: 241 sq. ft
Counted as Living Area:
Yes

Heated: Yes
Finished: Yes
Enclosed: Yes
Contiguous:
Yes
Permitted: Yes
Wet Space: No
Addition: No
Conversion: No

14 Floor 1 - Wc



Dimensions: 5'10" x 5'10"
Area: 34 sq. ft
Counted as Living Area:
Yes

Heated: Yes
Finished: Yes
Enclosed: Yes
Contiguous:
Yes
Permitted: Yes
Wet Space: Yes
Addition: No
Conversion: No

220 Cloud Leap Trail, Huntsville, AL, US

15 Floor 1 - Bath



Dimensions: 9'1" x 5'0"
Area: 45 sq. ft
Counted as Living Area:
Yes

Heated: Yes
Finished: Yes
Enclosed: Yes
Contiguous:
Yes
Permitted: Yes
Wet Space: Yes
Addition: No
Conversion: No

16 Floor 1 - Garage



Dimensions: 24'11" x 35'2"
Area: 843 sq. ft
Counted as Living Area: No

Heated: No
Finished: No
Enclosed: Yes
Contiguous: Yes
Permitted: Yes
Wet Space: No
Addition: No
Conversion: No