

21730 Honeysuckle Grove Lane, Richmond, Texas 77469, United States

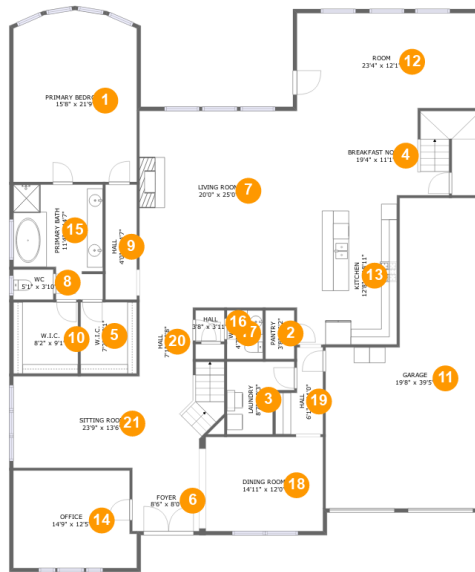


Property Summary

1 garages **6** bedrooms **4** bathrooms **1** half baths

2 floors **6,295** Gross Living Area sqft **7,586** total sqft

21730 Honeysuckle Grove Lane, Richmond, Texas 77469, United States



Room Dimensions

Floor 1

Total sqft: 3794

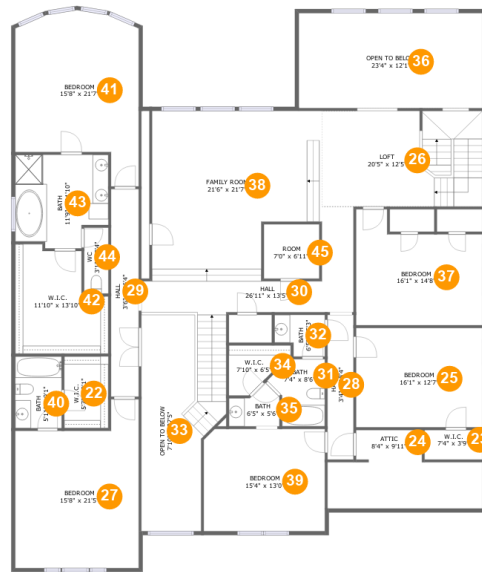
Living area: 3167

#	Room name	Dimensions	Area (sqft)	Counted as Living Area
1	Primary Bedroom	15'8" x 21'9"	328 sq. ft	Yes
2	Pantry	3'8" x 6'2"	23 sq. ft	Yes
3	Laundry	8'7" x 9'3"	63 sq. ft	Yes
4	Breakfast Nook	19'4" x 11'1"	251 sq. ft	Yes
5	W.i.c.	7'2" x 9'1"	65 sq. ft	Yes
6	Foyer	8'6" x 8'0"	68 sq. ft	Yes
7	Living Room	20'0" x 25'0"	499 sq. ft	Yes
8	Wc	5'1" x 3'10"	19 sq. ft	Yes
9	Hall	4'0" x 14'7"	58 sq. ft	Yes
10	W.i.c.	8'2" x 9'1"	74 sq. ft	Yes
11	Garage	19'8" x 39'5"	597 sq. ft	No

**21730 Honeysuckle Grove Lane, Richmond,
Texas 77469, United States**

#	Room name	Dimensions	Area (sqft)	Counted as Living Area
12	Room	23'4" x 12'1"	281 sq. ft	Yes
13	Kitchen	12'8" x 18'11"	240 sq. ft	Yes
14	Office	14'9" x 12'5"	187 sq. ft	Yes
15	Primary Bath	11'4" x 14'7"	142 sq. ft	Yes
16	Hall	3'8" x 3'11"	14 sq. ft	Yes
17	Wc	4'7" x 6'2"	28 sq. ft	Yes
18	Dining Room	14'11" x 12'0"	178 sq. ft	Yes
19	Hall	6'1" x 11'0"	51 sq. ft	Yes
20	Hall	7'1" x 8'8"	60 sq. ft	Yes
21	Sitting Room	23'9" x 13'6"	301 sq. ft	Yes

21730 Honeysuckle Grove Lane, Richmond, Texas 77469, United States



Room Dimensions

Floor 2

Total sqft: 3792

Living area: 3128

#	Room name	Dimensions	Area (sqft)	Counted as Living Area
22	W.i.c.	5'7" x 9'1"	51 sq. ft	Yes
23	W.i.c.	7'4" x 3'9"	28 sq. ft	Yes
24	Attic	8'4" x 9'11"	34 sq. ft	No
25	Bedroom	16'1" x 12'7"	202 sq. ft	Yes
26	Loft	20'5" x 12'5"	253 sq. ft	Yes
27	Bedroom	15'8" x 21'5"	287 sq. ft	Yes
28	Hall	3'4" x 18'4"	61 sq. ft	Yes
29	Hall	3'6" x 26'4"	93 sq. ft	Yes
30	Hall	26'11" x 13'5"	207 sq. ft	Yes
31	Bath	7'4" x 8'6"	50 sq. ft	Yes
32	Bath	6'5" x 5'3"	30 sq. ft	Yes

Scan captured on Tue, 17 Sep 2024 20:00:20 GMT

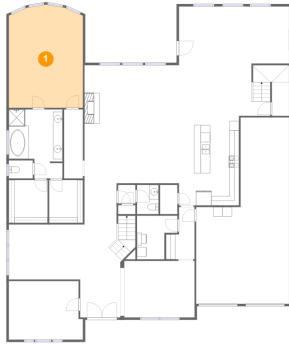
Information is calculated by CubiCasa technology; deemed highly reliable but not guaranteed.

**21730 Honeysuckle Grove Lane, Richmond,
Texas 77469, United States**

#	Room name	Dimensions	Area (sqft)	Counted as Living Area
33	Open To Below	7'10" x 27'5"	194 sq. ft	No
34	W.i.c.	7'10" x 6'5"	36 sq. ft	Yes
35	Bath	6'5" x 5'6"	27 sq. ft	Yes
36	Open To Below	23'4" x 12'1"	281 sq. ft	No
37	Bedroom	16'1" x 14'8"	198 sq. ft	Yes
38	Family Room	21'6" x 21'7"	408 sq. ft	Yes
39	Bedroom	15'4" x 13'0"	198 sq. ft	Yes
40	Bath	5'11" x 9'1"	54 sq. ft	Yes
41	Bedroom	15'8" x 21'7"	283 sq. ft	Yes
42	W.i.c.	11'10" x 13'10"	137 sq. ft	Yes
43	Bath	11'9" x 11'10"	127 sq. ft	Yes
44	Wc	3'1" x 8'4"	26 sq. ft	Yes
45	Room	7'0" x 6'11"	48 sq. ft	Yes

21730 Honeysuckle Grove Lane, Richmond, Texas 77469, United States

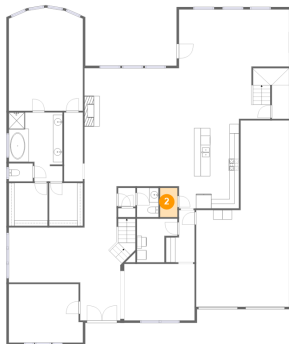
1 Floor 1 - Primary Bedroom



Dimensions: 15'8" x 21'9"
Area: 328 sq. ft
Counted as Living Area:
Yes

Heated: Yes
Finished: Yes
Enclosed: Yes
Contiguous:
Yes
Permitted: Yes
Wet Space: No
Addition: No
Conversion: No

2 Floor 1 - Pantry



Dimensions: 3'8" x 6'2"
Area: 23 sq. ft
Counted as Living Area:
Yes

Heated: Yes
Finished: Yes
Enclosed: Yes
Contiguous:
Yes
Permitted: Yes
Wet Space: No
Addition: No
Conversion: No

21730 Honeysuckle Grove Lane, Richmond, Texas 77469, United States

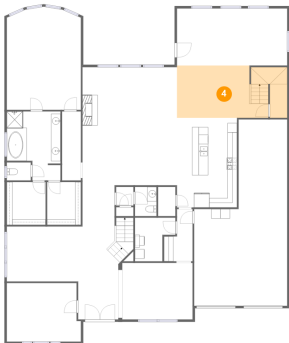
3 Floor 1 - Laundry



Dimensions: 8'7" x 9'3"
Area: 63 sq. ft
Counted as Living Area:
Yes

Heated: Yes
Finished: Yes
Enclosed: Yes
Contiguous:
Yes
Permitted: Yes
Wet Space: No
Addition: No
Conversion: No

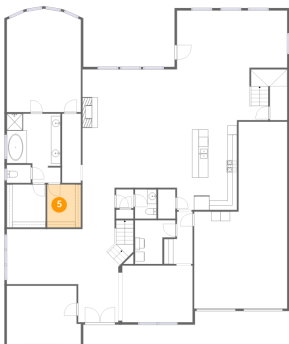
4 Floor 1 - Breakfast Nook



Dimensions: 19'4" x 11'1"
Area: 251 sq. ft
Counted as Living Area:
Yes

Heated: Yes
Finished: Yes
Enclosed: Yes
Contiguous:
Yes
Permitted: Yes
Wet Space: No
Addition: No
Conversion: No

5 Floor 1 - W.i.c.

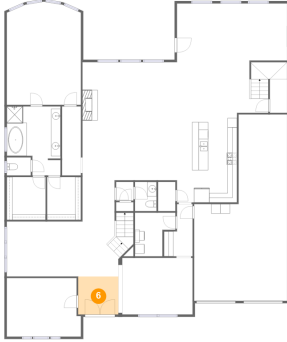


Dimensions: 7'2" x 9'1"
Area: 65 sq. ft
Counted as Living Area:
Yes

Heated: Yes
Finished: Yes
Enclosed: Yes
Contiguous:
Yes
Permitted: Yes
Wet Space: No
Addition: No
Conversion: No

21730 Honeysuckle Grove Lane, Richmond, Texas 77469, United States

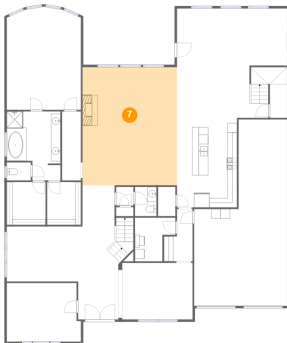
6 Floor 1 - Foyer



Dimensions: 8'6" x 8'0"
Area: 68 sq. ft
Counted as Living Area:
Yes

Heated: Yes
Finished: Yes
Enclosed: Yes
Contiguous:
Yes
Permitted: Yes
Wet Space: No
Addition: No
Conversion: No

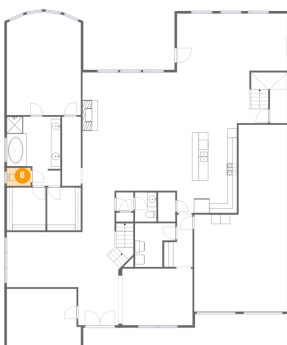
7 Floor 1 - Living Room



Dimensions: 20'0" x 25'0"
Area: 499 sq. ft
Counted as Living Area:
Yes

Heated: Yes
Finished: Yes
Enclosed: Yes
Contiguous:
Yes
Permitted: Yes
Wet Space: No
Addition: No
Conversion: No

8 Floor 1 - Wc

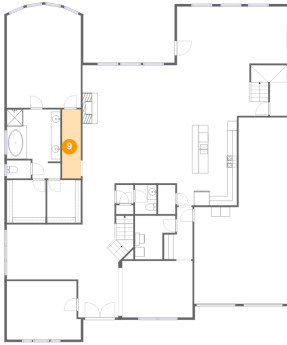


Dimensions: 5'1" x 3'10"
Area: 19 sq. ft
Counted as Living Area:
Yes

Heated: Yes
Finished: Yes
Enclosed: Yes
Contiguous:
Yes
Permitted: Yes
Wet Space: Yes
Addition: No
Conversion: No

21730 Honeysuckle Grove Lane, Richmond, Texas 77469, United States

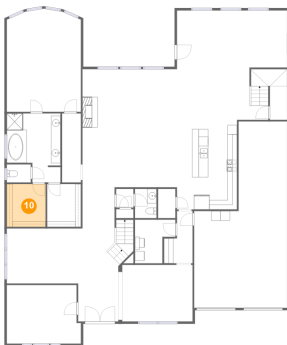
9 Floor 1 - Hall



Dimensions: 4'0" x 14'7"
Area: 58 sq. ft
Counted as Living Area:
Yes

Heated: Yes
Finished: Yes
Enclosed: Yes
Contiguous:
Yes
Permitted: Yes
Wet Space: No
Addition: No
Conversion: No

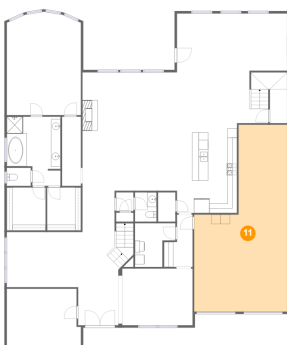
10 Floor 1 - W.i.c.



Dimensions: 8'2" x 9'1"
Area: 74 sq. ft
Counted as Living Area:
Yes

Heated: Yes
Finished: Yes
Enclosed: Yes
Contiguous:
Yes
Permitted: Yes
Wet Space: No
Addition: No
Conversion: No

11 Floor 1 - Garage

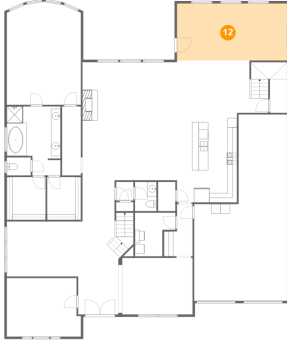


Dimensions: 19'8" x 39'5"
Area: 597 sq. ft
Counted as Living Area: No

Heated: No
Finished: No
Enclosed: Yes
Contiguous: Yes
Permitted: Yes
Wet Space: No
Addition: No
Conversion: No

21730 Honeysuckle Grove Lane, Richmond, Texas 77469, United States

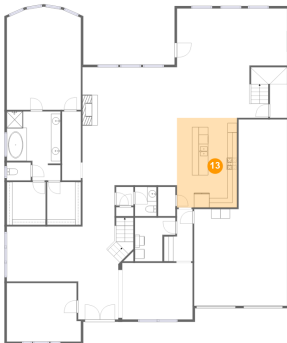
12 Floor 1 - Room



Dimensions: 23'4" x 12'1"
Area: 281 sq. ft
Counted as Living Area:
Yes

Heated: Yes
Finished: Yes
Enclosed: Yes
Contiguous:
Yes
Permitted: Yes
Wet Space: No
Addition: No
Conversion: No

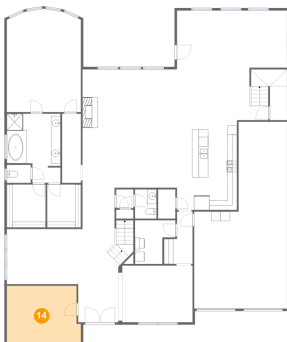
13 Floor 1 - Kitchen



Dimensions: 12'8" x 18'11"
Area: 240 sq. ft
Counted as Living Area:
Yes

Heated: Yes
Finished: Yes
Enclosed: Yes
Contiguous:
Yes
Permitted: Yes
Wet Space: No
Addition: No
Conversion: No

14 Floor 1 - Office



Dimensions: 14'9" x 12'5"
Area: 187 sq. ft
Counted as Living Area:
Yes

Heated: Yes
Finished: Yes
Enclosed: Yes
Contiguous:
Yes
Permitted: Yes
Wet Space: No
Addition: No
Conversion: No

21730 Honeysuckle Grove Lane, Richmond, Texas 77469, United States

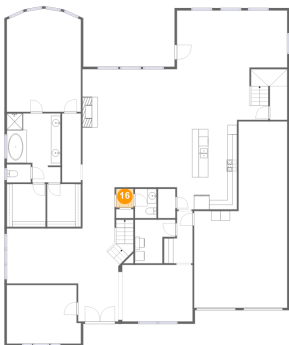
15 Floor 1 - Primary Bath



Dimensions: 11'4" x 14'7"
Area: 142 sq. ft
Counted as Living Area:
Yes

Heated: Yes
Finished: Yes
Enclosed: Yes
Contiguous:
Yes
Permitted: Yes
Wet Space: Yes
Addition: No
Conversion: No

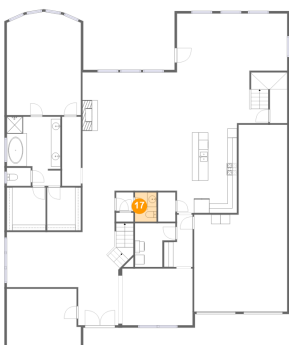
16 Floor 1 - Hall



Dimensions: 3'8" x 3'11"
Area: 14 sq. ft
Counted as Living Area:
Yes

Heated: Yes
Finished: Yes
Enclosed: Yes
Contiguous:
Yes
Permitted: Yes
Wet Space: No
Addition: No
Conversion: No

17 Floor 1 - Wc

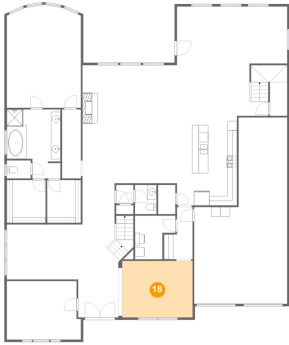


Dimensions: 4'7" x 6'2"
Area: 28 sq. ft
Counted as Living Area:
Yes

Heated: Yes
Finished: Yes
Enclosed: Yes
Contiguous:
Yes
Permitted: Yes
Wet Space: Yes
Addition: No
Conversion: No

21730 Honeysuckle Grove Lane, Richmond, Texas 77469, United States

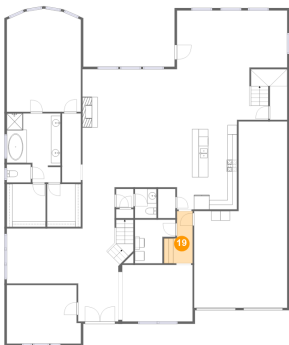
18 Floor 1 - Dining Room



Dimensions: 14'11" x 12'0"
Area: 178 sq. ft
Counted as Living Area:
Yes

Heated: Yes
Finished: Yes
Enclosed: Yes
Contiguous:
Yes
Permitted: Yes
Wet Space: No
Addition: No
Conversion: No

19 Floor 1 - Hall



Dimensions: 6'1" x 11'0"
Area: 51 sq. ft
Counted as Living Area:
Yes

Heated: Yes
Finished: Yes
Enclosed: Yes
Contiguous:
Yes
Permitted: Yes
Wet Space: No
Addition: No
Conversion: No

20 Floor 1 - Hall

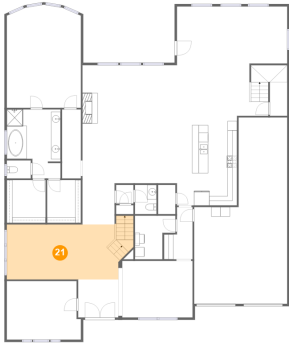


Dimensions: 7'1" x 8'8"
Area: 60 sq. ft
Counted as Living Area:
Yes

Heated: Yes
Finished: Yes
Enclosed: Yes
Contiguous:
Yes
Permitted: Yes
Wet Space: No
Addition: No
Conversion: No

21730 Honeysuckle Grove Lane, Richmond, Texas 77469, United States

21 Floor 1 - Sitting Room



Dimensions: 23'9" x 13'6"
Area: 301 sq. ft
Counted as Living Area:
Yes

Heated: Yes
Finished: Yes
Enclosed: Yes
Contiguous:
Yes
Permitted: Yes
Wet Space: No
Addition: No
Conversion: No

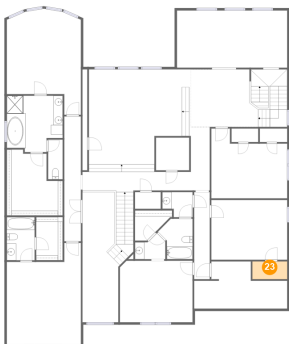
22 Floor 2 - W.i.c.



Dimensions: 5'7" x 9'1"
Area: 51 sq. ft
Counted as Living Area:
Yes

Heated: Yes
Finished: Yes
Enclosed: Yes
Contiguous:
Yes
Permitted: Yes
Wet Space: No
Addition: No
Conversion: No

23 Floor 2 - W.i.c.



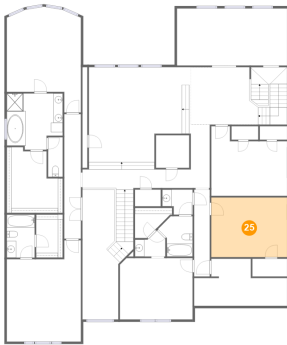
Dimensions: 7'4" x 3'9"
Area: 28 sq. ft
Counted as Living Area:
Yes

Heated: Yes
Finished: Yes
Enclosed: Yes
Contiguous:
Yes
Permitted: Yes
Wet Space: No
Addition: No
Conversion: No

**21730 Honeysuckle Grove Lane, Richmond,
Texas 77469, United States****24 Floor 2 - Attic**

Dimensions: 8'4" x 9'11"
Area: 34 sq. ft
Counted as Living Area: No

Heated: No
Finished: No
Enclosed: Yes
Contiguous: Yes
Permitted: Yes
Wet Space: No
Addition: No
Conversion: No

25 Floor 2 - Bedroom

Dimensions: 16'1" x 12'7"
Area: 202 sq. ft
Counted as Living Area:
Yes

Heated: Yes
Finished: Yes
Enclosed: Yes
Contiguous:
Yes
Permitted: Yes
Wet Space: No
Addition: No
Conversion: No

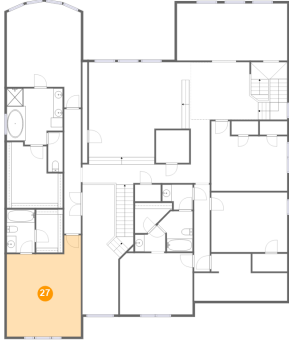
26 Floor 2 - Loft

Dimensions: 20'5" x 12'5"
Area: 253 sq. ft
Counted as Living Area:
Yes

Heated: Yes
Finished: Yes
Enclosed: Yes
Contiguous:
Yes
Permitted: Yes
Wet Space: No
Addition: No
Conversion: No

21730 Honeysuckle Grove Lane, Richmond, Texas 77469, United States

27 Floor 2 - Bedroom



Dimensions: 15'8" x 21'5"
Area: 287 sq. ft
Counted as Living Area:
Yes

Heated: Yes
Finished: Yes
Enclosed: Yes
Contiguous:
Yes
Permitted: Yes
Wet Space: No
Addition: No
Conversion: No

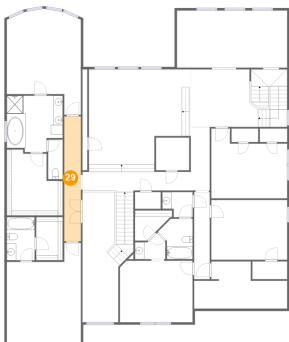
28 Floor 2 - Hall



Dimensions: 3'4" x 18'4"
Area: 61 sq. ft
Counted as Living Area:
Yes

Heated: Yes
Finished: Yes
Enclosed: Yes
Contiguous:
Yes
Permitted: Yes
Wet Space: No
Addition: No
Conversion: No

29 Floor 2 - Hall

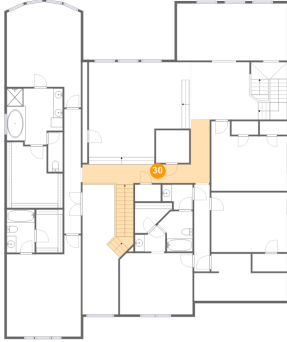


Dimensions: 3'6" x 26'4"
Area: 93 sq. ft
Counted as Living Area:
Yes

Heated: Yes
Finished: Yes
Enclosed: Yes
Contiguous:
Yes
Permitted: Yes
Wet Space: No
Addition: No
Conversion: No

21730 Honeysuckle Grove Lane, Richmond, Texas 77469, United States

30 Floor 2 - Hall



Dimensions: 26'11" x 13'5"
Area: 207 sq. ft
Counted as Living Area:
Yes

Heated: Yes
Finished: Yes
Enclosed: Yes
Contiguous:
Yes
Permitted: Yes
Wet Space: No
Addition: No
Conversion: No

31 Floor 2 - Bath



Dimensions: 7'4" x 8'6"
Area: 50 sq. ft
Counted as Living Area:
Yes

Heated: Yes
Finished: Yes
Enclosed: Yes
Contiguous:
Yes
Permitted: Yes
Wet Space: Yes
Addition: No
Conversion: No

32 Floor 2 - Bath

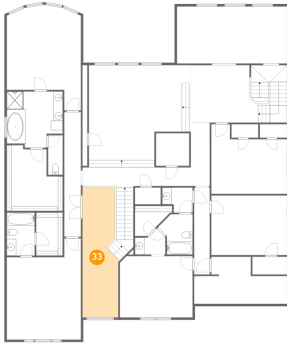


Dimensions: 6'5" x 5'3"
Area: 30 sq. ft
Counted as Living Area:
Yes

Heated: Yes
Finished: Yes
Enclosed: Yes
Contiguous:
Yes
Permitted: Yes
Wet Space: Yes
Addition: No
Conversion: No

21730 Honeysuckle Grove Lane, Richmond, Texas 77469, United States

33 Floor 2 - Open To Below



Dimensions: 7'10" x 27'5"
Area: 194 sq. ft
Counted as Living Area: No

Heated: No
Finished: No
Enclosed: No
Contiguous: Yes
Permitted: No
Wet Space: No
Addition: No
Conversion: No

34 Floor 2 - W.i.c.



Dimensions: 7'10" x 6'5"
Area: 36 sq. ft
Counted as Living Area:
Yes

Heated: Yes
Finished: Yes
Enclosed: Yes
Contiguous:
Yes
Permitted: Yes
Wet Space: No
Addition: No
Conversion: No

35 Floor 2 - Bath

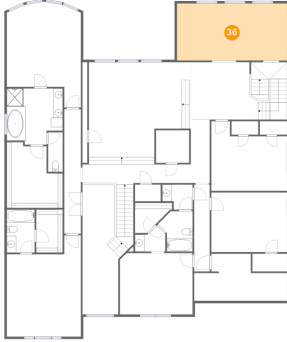


Dimensions: 6'5" x 5'6"
Area: 27 sq. ft
Counted as Living Area:
Yes

Heated: Yes
Finished: Yes
Enclosed: Yes
Contiguous:
Yes
Permitted: Yes
Wet Space: Yes
Addition: No
Conversion: No

21730 Honeysuckle Grove Lane, Richmond, Texas 77469, United States

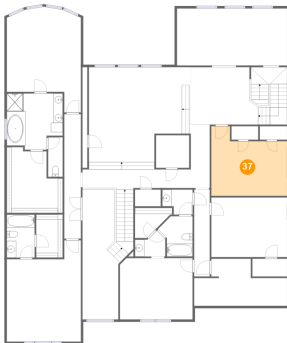
36 Floor 2 - Open To Below



Dimensions: 23'4" x 12'1"
Area: 281 sq. ft
Counted as Living Area: No

Heated: No
Finished: No
Enclosed: No
Contiguous: Yes
Permitted: No
Wet Space: No
Addition: No
Conversion: No

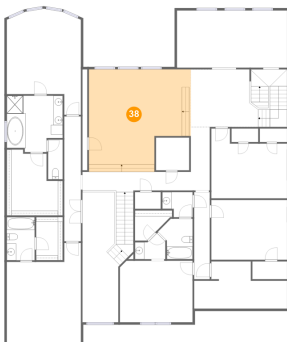
37 Floor 2 - Bedroom



Dimensions: 16'1" x 14'8"
Area: 198 sq. ft
Counted as Living Area:
Yes

Heated: Yes
Finished: Yes
Enclosed: Yes
Contiguous:
Yes
Permitted: Yes
Wet Space: No
Addition: No
Conversion: No

38 Floor 2 - Family Room

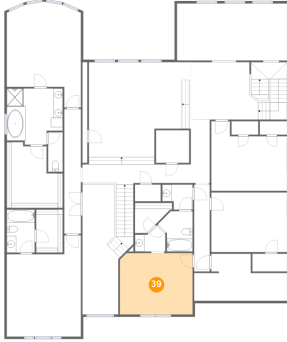


Dimensions: 21'6" x 21'7"
Area: 408 sq. ft
Counted as Living Area:
Yes

Heated: Yes
Finished: Yes
Enclosed: Yes
Contiguous:
Yes
Permitted: Yes
Wet Space: No
Addition: No
Conversion: No

21730 Honeysuckle Grove Lane, Richmond, Texas 77469, United States

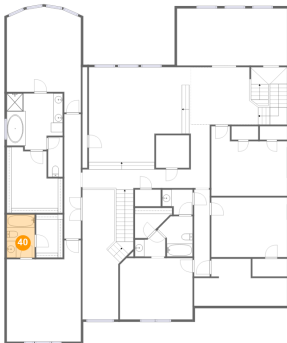
39 Floor 2 - Bedroom



Dimensions: 15'4" x 13'0"
Area: 198 sq. ft
Counted as Living Area:
Yes

Heated: Yes
Finished: Yes
Enclosed: Yes
Contiguous:
Yes
Permitted: Yes
Wet Space: No
Addition: No
Conversion: No

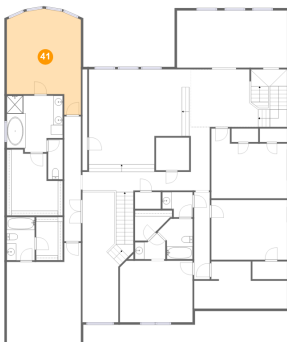
40 Floor 2 - Bath



Dimensions: 5'11" x 9'1"
Area: 54 sq. ft
Counted as Living Area:
Yes

Heated: Yes
Finished: Yes
Enclosed: Yes
Contiguous:
Yes
Permitted: Yes
Wet Space: Yes
Addition: No
Conversion: No

41 Floor 2 - Bedroom

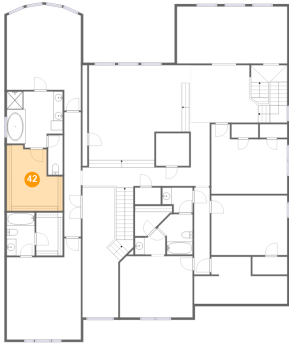


Dimensions: 15'8" x 21'7"
Area: 283 sq. ft
Counted as Living Area:
Yes

Heated: Yes
Finished: Yes
Enclosed: Yes
Contiguous:
Yes
Permitted: Yes
Wet Space: No
Addition: No
Conversion: No

21730 Honeysuckle Grove Lane, Richmond, Texas 77469, United States

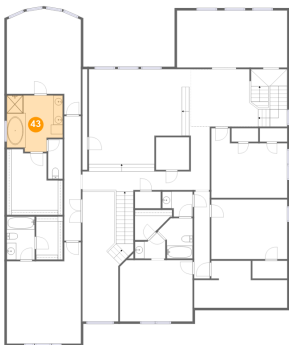
42 Floor 2 - W.i.c.



Dimensions: 11'10" x 13'10"
Area: 137 sq. ft
Counted as Living Area:
Yes

Heated: Yes
Finished: Yes
Enclosed: Yes
Contiguous:
Yes
Permitted: Yes
Wet Space: No
Addition: No
Conversion: No

43 Floor 2 - Bath



Dimensions: 11'9" x 11'10"
Area: 127 sq. ft
Counted as Living Area:
Yes

Heated: Yes
Finished: Yes
Enclosed: Yes
Contiguous:
Yes
Permitted: Yes
Wet Space: Yes
Addition: No
Conversion: No

44 Floor 2 - Wc



Dimensions: 3'1" x 8'4"
Area: 26 sq. ft
Counted as Living Area:
Yes

Heated: Yes
Finished: Yes
Enclosed: Yes
Contiguous:
Yes
Permitted: Yes
Wet Space: Yes
Addition: No
Conversion: No

21730 Honeysuckle Grove Lane, Richmond, Texas 77469, United States

45 Floor 2 - Room



Dimensions: 7'0" x 6'11"
Area: 48 sq. ft
Counted as Living Area:
Yes

Heated: Yes
Finished: Yes
Enclosed: Yes
Contiguous:
Yes
Permitted: Yes
Wet Space: No
Addition: No
Conversion: No