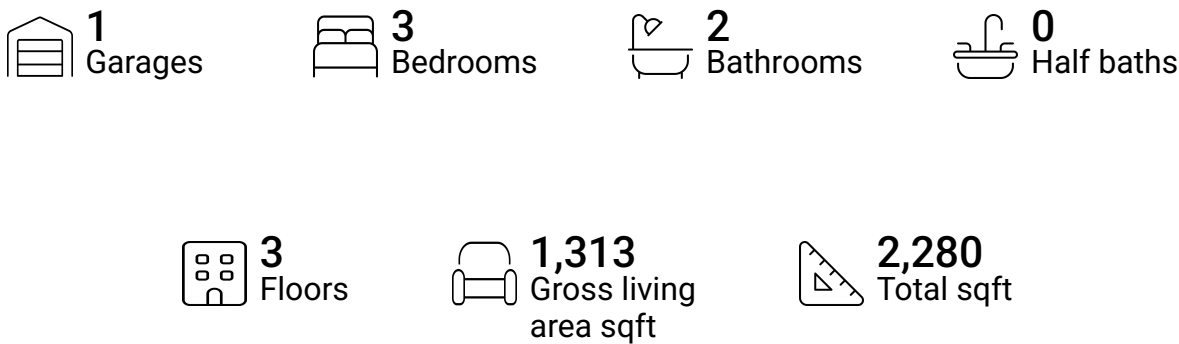


Home report

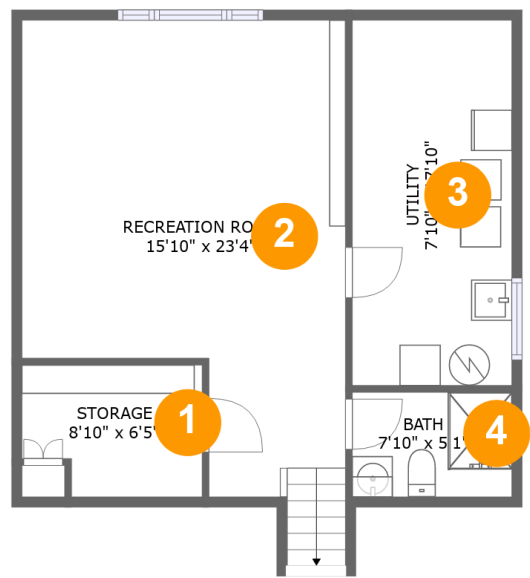
1813 Pheasant Trail, Mount Prospect, Cook County, Illinois,
United States, 60056



Property summary



1813 Pheasant Trail, Mount Prospect, Cook County, Illinois,
United States, 60056



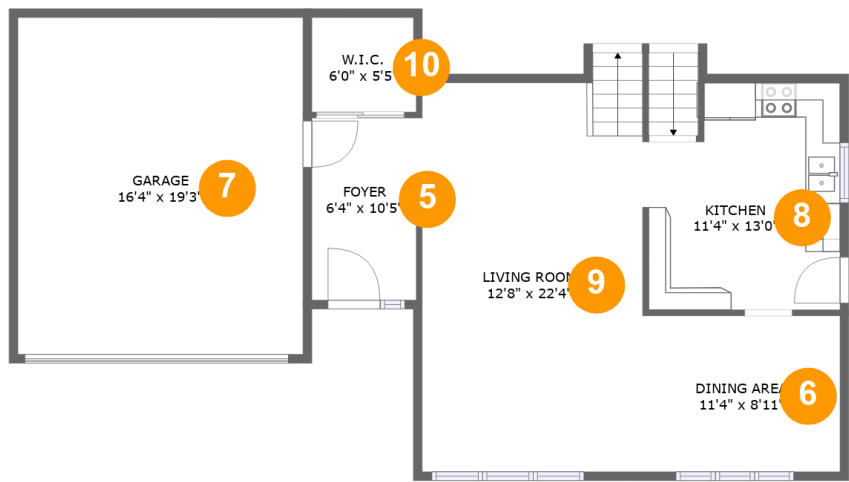
Room dimensions

Floor 1 Total sqft: 623 Living area: 0

#		Dimensions	sqft	Counted as living area
1	Storage	8'10" x 6'5"	52 sq. ft	No
2	Recreation Room	15'10" x 23'4"	317 sq. ft	No
3	Utility	7'10" x 17'10"	140 sq. ft	No
4	Bath	7'10" x 5'1"	40 sq. ft	No

Home report

1813 Pheasant Trail, Mount Prospect, Cook County, Illinois,
United States, 60056

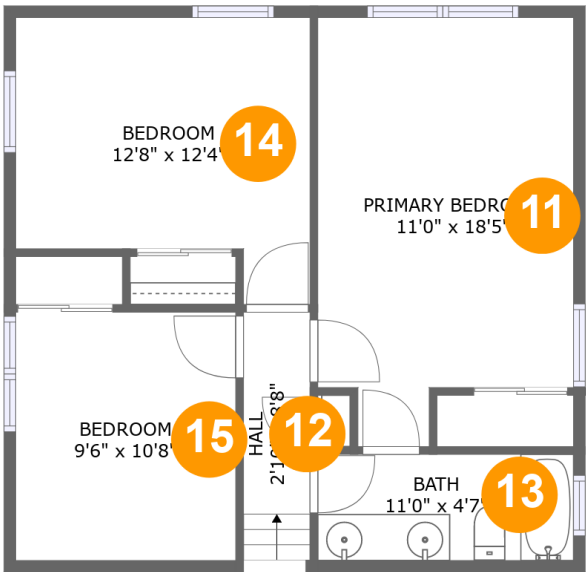


Room dimensions

Floor 2 Total sqft: 1049 Living area: 705

#		Dimensions	sqft	Counted as living area
5	Foyer	6'4" x 10'5"	64 sq. ft	Yes
6	Dining Area	11'4" x 8'11"	101 sq. ft	Yes
7	Garage	16'4" x 19'3"	316 sq. ft	No
8	Kitchen	11'4" x 13'0"	134 sq. ft	Yes
9	Living Room	12'8" x 22'4"	287 sq. ft	Yes
10	W.I.C.	6'0" x 5'5"	32 sq. ft	Yes

1813 Pheasant Trail, Mount Prospect, Cook County, Illinois,
United States, 60056



Room dimensions

Floor 3 Total sqft: 608 Living area: 608

#		Dimensions	sqft	Counted as living area
11	Primary Bedroom	11'0" x 18'5"	182 sq. ft	Yes
12	Hall	2'10" x 8'8"	31 sq. ft	Yes
13	Bath	11'0" x 4'7"	50 sq. ft	Yes
14	Bedroom	12'8" x 12'4"	132 sq. ft	Yes
15	Bedroom	9'6" x 10'8"	101 sq. ft	Yes

1813 Pheasant Trail, Mount Prospect, Cook County, Illinois,
United States, 60056

1 Floor 1 - Storage



Dimensions: 8'10" x 6'5"
Area: 52 sq. ft
Counted as living area: No

Heated: No
Finished: No
Enclosed: No
Contiguous: Yes
Permitted: Yes
Wet space: No
Addition: No
Conversion: No

2 Floor 1 - Recreation Room



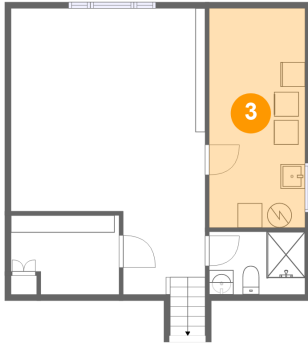
Dimensions: 15'10" x 23'4"
Area: 317 sq. ft
Counted as living area: No

Heated: Yes
Finished: Yes
Enclosed: Yes
Contiguous: No
Permitted: Yes
Wet space: No
Addition: No
Conversion: No

Home report

1813 Pheasant Trail, Mount Prospect, Cook County, Illinois,
United States, 60056

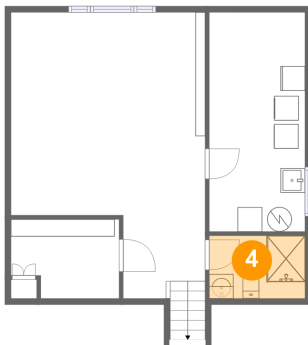
3 Floor 1 - Utility



Dimensions: 7'10" x 17'10"
Area: 140 sq. ft
Counted as living area: No

Heated: Yes
Finished: No
Enclosed: Yes
Contiguous: Yes
Permitted: Yes
Wet space: No
Addition: No
Conversion: No

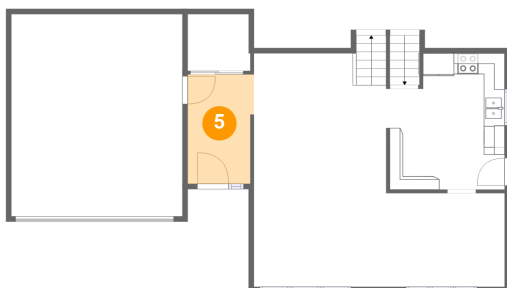
4 Floor 1 - Bath



Dimensions: 7'10" x 5'1"
Area: 40 sq. ft
Counted as living area: No

Heated: Yes
Finished: Yes
Enclosed: Yes
Contiguous: No
Permitted: Yes
Wet space: Yes
Addition: No
Conversion: No

5 Floor 2 - Foyer

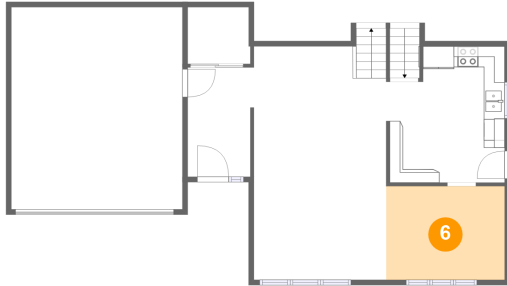


Dimensions: 6'4" x 10'5"
Area: 64 sq. ft
Counted as living area: Yes

Heated: Yes
Finished: Yes
Enclosed: Yes
Contiguous: Yes
Permitted: Yes
Wet space: No
Addition: No
Conversion: No

1813 Pheasant Trail, Mount Prospect, Cook County, Illinois,
United States, 60056

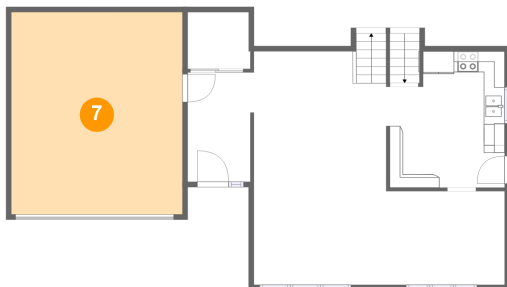
6 Floor 2 - Dining Area



Dimensions: 11'4" x 8'11"
Area: 101 sq. ft
Counted as living area: Yes

Heated: Yes
Finished: Yes
Enclosed: Yes
Contiguous: Yes
Permitted: Yes
Wet space: No
Addition: No
Conversion: No

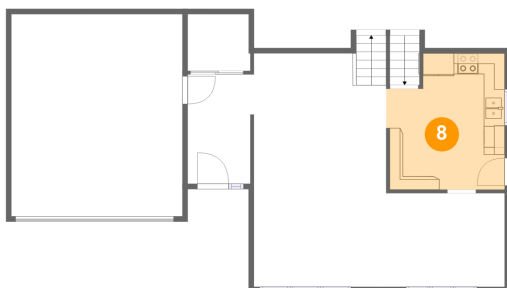
7 Floor 2 - Garage



Dimensions: 16'4" x 19'3"
Area: 316 sq. ft
Counted as living area: No

Heated: No
Finished: No
Enclosed: Yes
Contiguous: Yes
Permitted: Yes
Wet space: No
Addition: No
Conversion: No

8 Floor 2 - Kitchen

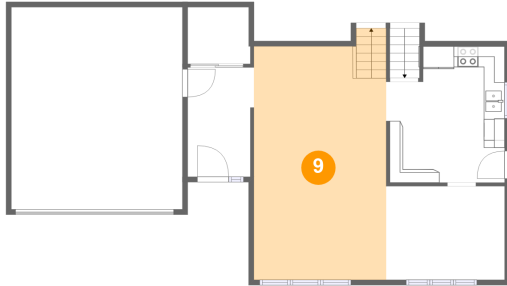


Dimensions: 11'4" x 13'0"
Area: 134 sq. ft
Counted as living area: Yes

Heated: Yes
Finished: Yes
Enclosed: Yes
Contiguous: Yes
Permitted: Yes
Wet space: No
Addition: No
Conversion: No

1813 Pheasant Trail, Mount Prospect, Cook County, Illinois,
United States, 60056

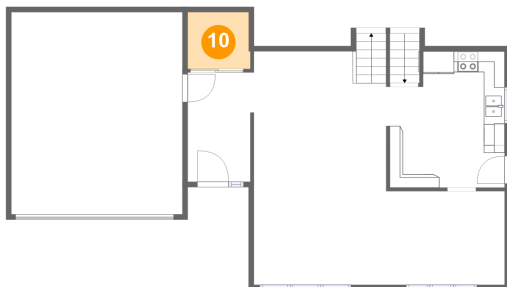
9 Floor 2 - Living Room



Dimensions: 12'8" x 22'4"
Area: 287 sq. ft
Counted as living area: Yes

Heated: Yes
Finished: Yes
Enclosed: Yes
Contiguous: Yes
Permitted: Yes
Wet space: No
Addition: No
Conversion: No

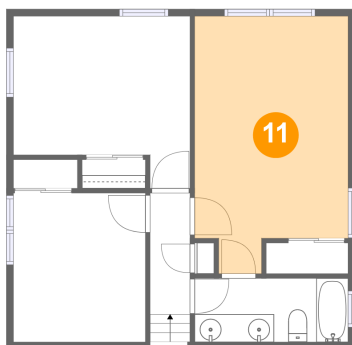
10 Floor 2 - W.I.C.



Dimensions: 6'0" x 5'5"
Area: 32 sq. ft
Counted as living area: Yes

Heated: Yes
Finished: Yes
Enclosed: Yes
Contiguous: Yes
Permitted: Yes
Wet space: No
Addition: No
Conversion: No

11 Floor 3 - Primary Bedroom

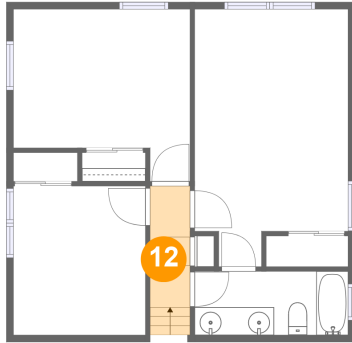


Dimensions: 11'0" x 18'5"
Area: 182 sq. ft
Counted as living area: Yes

Heated: Yes
Finished: Yes
Enclosed: Yes
Contiguous: Yes
Permitted: Yes
Wet space: No
Addition: No
Conversion: No

1813 Pheasant Trail, Mount Prospect, Cook County, Illinois,
United States, 60056

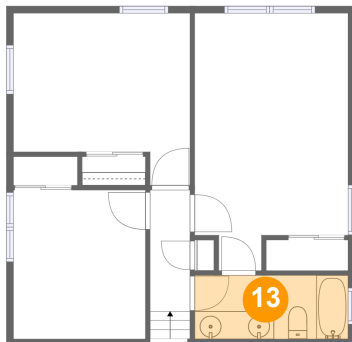
12 Floor 3 - Hall



Dimensions: 2'10" x 8'8"
Area: 31 sq. ft
Counted as living area: Yes

Heated: Yes
Finished: Yes
Enclosed: Yes
Contiguous: Yes
Permitted: Yes
Wet space: No
Addition: No
Conversion: No

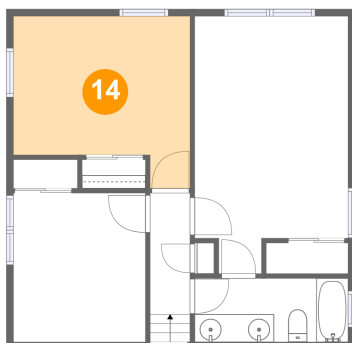
13 Floor 3 - Bath



Dimensions: 11'0" x 4'7"
Area: 50 sq. ft
Counted as living area: Yes

Heated: Yes
Finished: Yes
Enclosed: Yes
Contiguous: Yes
Permitted: Yes
Wet space: Yes
Addition: No
Conversion: No

14 Floor 3 - Bedroom

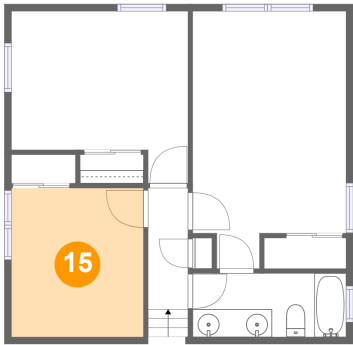


Dimensions: 12'8" x 12'4"
Area: 132 sq. ft
Counted as living area: Yes

Heated: Yes
Finished: Yes
Enclosed: Yes
Contiguous: Yes
Permitted: Yes
Wet space: No
Addition: No
Conversion: No

1813 Pheasant Trail, Mount Prospect, Cook County, Illinois,
United States, 60056

15 Floor 3 - Bedroom



Dimensions: 9'6" x 10'8"
Area: 101 sq. ft
Counted as living area: Yes

Heated: Yes
Finished: Yes
Enclosed: Yes
Contiguous: Yes
Permitted: Yes
Wet space: No
Addition: No
Conversion: No