

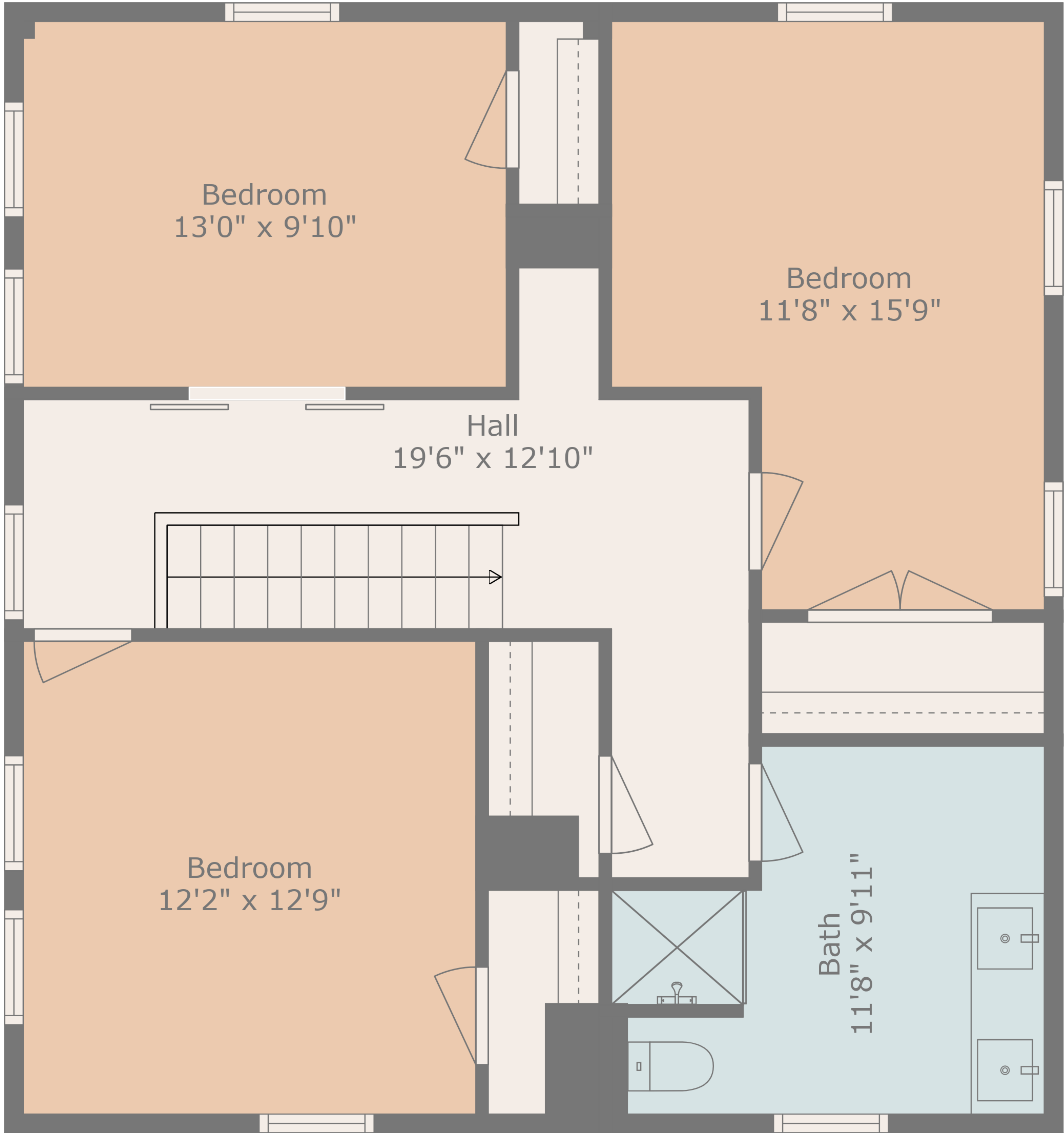
TOTAL: 3051 sq. ft
BELOW GROUND: 602 sq. ft, FLOOR 2: 1642 sq. ft, FLOOR 3: 807 sq. ft
EXCLUDED AREAS: BASEMENT: 812 sq. ft, LOW CEILING: 124 sq. ft, ROOM: 96 sq. ft,
GARAGE: 568 sq. ft, DECK: 451 sq. ft
WALLS: 324 sq. ft





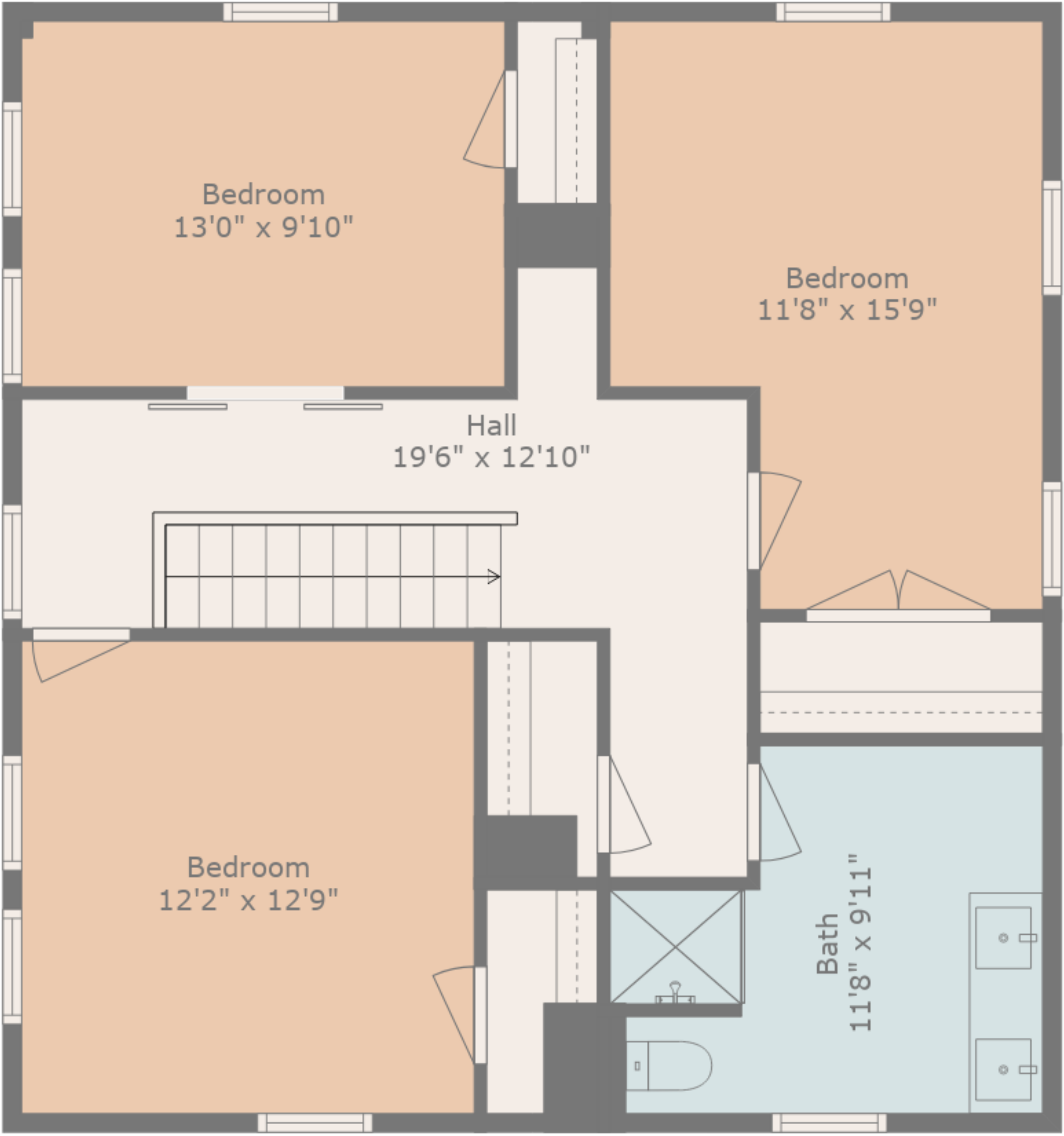
TOTAL: 3051 sq. ft
BELOW GROUND: 602 sq. ft, FLOOR 2: 1642 sq. ft, FLOOR 3: 807 sq. ft
EXCLUDED AREAS: BASEMENT: 812 sq. ft, LOW CEILING: 124 sq. ft, ROOM: 96 sq. ft,
GARAGE: 568 sq. ft, DECK: 451 sq. ft
WALLS: 324 sq. ft





TOTAL: 3051 sq. ft
BELOW GROUND: 602 sq. ft, FLOOR 2: 1642 sq. ft, FLOOR 3: 807 sq. ft
EXCLUDED AREAS: BASEMENT: 812 sq. ft, LOW CEILING: 124 sq. ft, ROOM: 96 sq. ft,
GARAGE: 568 sq. ft, DECK: 451 sq. ft
WALLS: 324 sq. ft





TOTAL: 3051 sq. ft
BELOW GROUND: 602 sq. ft, FLOOR 2: 1642 sq. ft, FLOOR 3: 807 sq. ft
EXCLUDED AREAS: BASEMENT: 812 sq. ft, LOW CEILING: 124 sq. ft, ROOM: 96 sq. ft,
GARAGE: 568 sq. ft, DECK: 451 sq. ft
WALLS: 324 sq. ft

