

Home report

2290 North Irvine Street, Cornelius, Washington County, Oregon,  
United States, 97113



**Total Area: 1742 sq. ft**  
Floor 1: 835 sq. ft, Floor 2: 907 sq. ft  
Excluded: Garage 384 sq. ft, Fireplace 11 sq. ft, Opentobelow 233 sq. ft, Walls: 168 sq. ft

Property summary

 **2** Floors

 **4** Bedrooms

 **2** Bathrooms

Home report

**2290 North Irvine Street, Cornelius, Washington County, Oregon,  
United States, 97113**



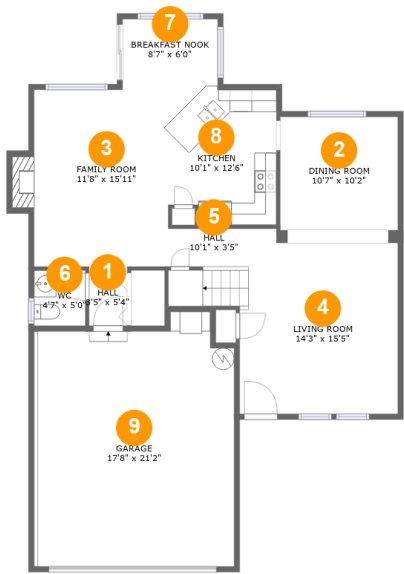
**1**  
Half baths



**1**  
Garages

Home report

2290 North Irvine Street, Cornelius, Washington County, Oregon,  
United States, 97113



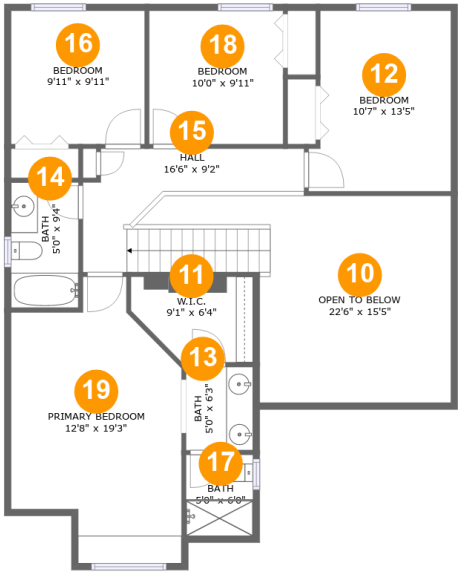
Room dimensions

Floor 1 Total:835sqft    Excluded: 395sqft

| # |                | Max Dimensions | sqft       | Included |
|---|----------------|----------------|------------|----------|
| 1 | Hall           | 3'5" x 5'4"    | 18 sq. ft  | Yes      |
| 2 | Dining Room    | 10'7" x 10'2"  | 108 sq. ft | Yes      |
| 3 | Family Room    | 11'8" x 15'11" | 197 sq. ft | Yes      |
| 4 | Living Room    | 14'3" x 15'5"  | 236 sq. ft | Yes      |
| 5 | Hall           | 10'1" x 3'5"   | 32 sq. ft  | Yes      |
| 6 | WC             | 4'7" x 5'0"    | 23 sq. ft  | Yes      |
| 7 | Breakfast Nook | 8'7" x 6'0"    | 52 sq. ft  | Yes      |
| 8 | Kitchen        | 10'1" x 12'6"  | 120 sq. ft | Yes      |
| 9 | Garage         | 17'8" x 21'2"  | 384 sq. ft | No       |

Home report

2290 North Irvine Street, Cornelius, Washington County, Oregon,  
United States, 97113

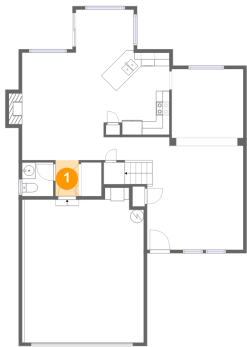


Room dimensions

Floor 2 Total:907sqft    Excluded: 233sqft

| #  |                 | Max Dimensions | sqft       | Included |
|----|-----------------|----------------|------------|----------|
| 10 | Open To Below   | 22'6" x 15'5"  | 233 sq. ft | No       |
| 11 | W.I.C.          | 9'1" x 6'4"    | 51 sq. ft  | Yes      |
| 12 | Bedroom         | 10'7" x 13'5"  | 133 sq. ft | Yes      |
| 13 | Bath            | 5'0" x 6'3"    | 31 sq. ft  | Yes      |
| 14 | Bath            | 5'0" x 9'4"    | 47 sq. ft  | Yes      |
| 15 | Hall            | 16'6" x 9'2"   | 115 sq. ft | Yes      |
| 16 | Bedroom         | 9'11" x 9'11"  | 99 sq. ft  | Yes      |
| 17 | Bath            | 5'0" x 6'0"    | 30 sq. ft  | Yes      |
| 18 | Bedroom         | 10'0" x 9'11"  | 99 sq. ft  | Yes      |
| 19 | Primary Bedroom | 12'8" x 19'3"  | 217 sq. ft | Yes      |

1 Floor 1 - Hall



Max Dimensions: 3'5" x 5'4"  
Calculated Area: 18 sq. ft  
Included: Yes

Heated: Yes  
Finished: Yes  
Enclosed: Yes  
Contiguous: Yes  
Permitted: Yes  
Wet space: No  
Addition: No  
Conversion: No

2 Floor 1 - Dining Room



Max Dimensions: 10'7" x 10'2"  
Calculated Area: 108 sq. ft  
Included: Yes

Heated: Yes  
Finished: Yes  
Enclosed: Yes  
Contiguous: Yes  
Permitted: Yes  
Wet space: No  
Addition: No  
Conversion: No

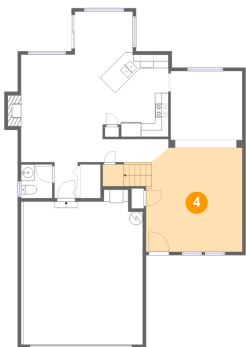
3 Floor 1 - Family Room



Max Dimensions: 11'8" x 15'11"  
Calculated Area: 197 sq. ft  
Included: Yes

Heated: Yes  
Finished: Yes  
Enclosed: Yes  
Contiguous: Yes  
Permitted: Yes  
Wet space: No  
Addition: No  
Conversion: No

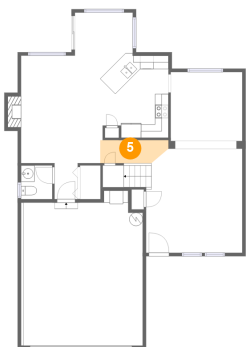
4 Floor 1 - Living Room



Max Dimensions: 14'3" x 15'5"  
Calculated Area: 236 sq. ft  
Included: Yes

Heated: Yes  
Finished: Yes  
Enclosed: Yes  
Contiguous: Yes  
Permitted: Yes  
Wet space: No  
Addition: No  
Conversion: No

5 Floor 1 - Hall



Max Dimensions: 10'1" x 3'5"  
Calculated Area: 32 sq. ft  
Included: Yes

Heated: Yes  
Finished: Yes  
Enclosed: Yes  
Contiguous: Yes  
Permitted: Yes  
Wet space: No  
Addition: No  
Conversion: No

## Home report

2290 North Irvine Street, Cornelius, Washington County, Oregon,  
United States, 97113

### 6 Floor 1 - WC



Max Dimensions: 4'7" x 5'0"  
Calculated Area: 23 sq. ft  
Included: Yes

Heated: Yes  
Finished: Yes  
Enclosed: Yes  
Contiguous: Yes  
Permitted: Yes  
Wet space: Yes  
Addition: No  
Conversion: No

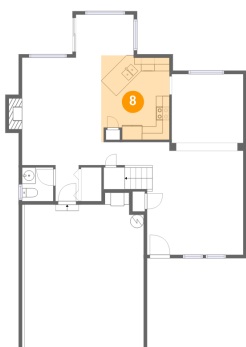
### 7 Floor 1 - Breakfast Nook



Max Dimensions: 8'7" x 6'0"  
Calculated Area: 52 sq. ft  
Included: Yes

Heated: Yes  
Finished: Yes  
Enclosed: Yes  
Contiguous: Yes  
Permitted: Yes  
Wet space: No  
Addition: No  
Conversion: No

### 8 Floor 1 - Kitchen



Max Dimensions: 10'1" x 12'6"  
Calculated Area: 120 sq. ft  
Included: Yes

Heated: Yes  
Finished: Yes  
Enclosed: Yes  
Contiguous: Yes  
Permitted: Yes  
Wet space: No  
Addition: No  
Conversion: No

Home report

2290 North Irvine Street, Cornelius, Washington County, Oregon,  
United States, 97113

**9** Floor 1 - Garage

---

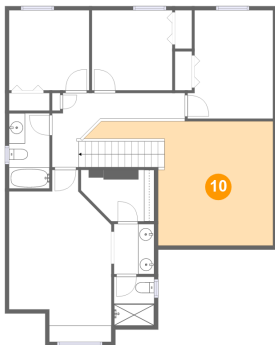


Max Dimensions: 17'8" x 21'2"  
Calculated Area: 384 sq. ft  
Included: No

Heated: No  
Finished: No  
Enclosed: Yes  
Contiguous: Yes  
Permitted: Yes  
Wet space: No  
Addition: No  
Conversion: No

**10** Floor 2 - Open To Below

---

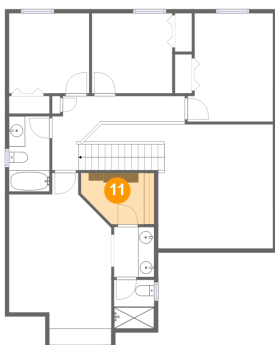


Max Dimensions: 22'6" x 15'5"  
Calculated Area: 233 sq. ft  
Included: No

Heated: No  
Finished: No  
Enclosed: No  
Contiguous: Yes  
Permitted: No  
Wet space: No  
Addition: No  
Conversion: No

**11** Floor 2 - W.I.C.

---

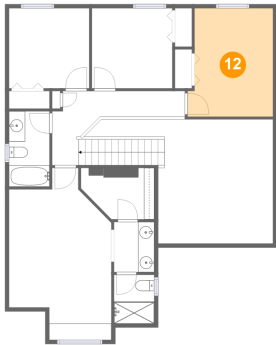


Max Dimensions: 9'1" x 6'4"  
Calculated Area: 51 sq. ft  
Included: Yes

Heated: Yes  
Finished: Yes  
Enclosed: Yes  
Contiguous: Yes  
Permitted: Yes  
Wet space: No  
Addition: No  
Conversion: No



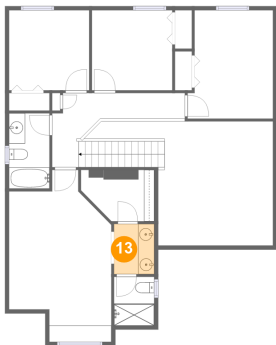
12 Floor 2 - Bedroom



Max Dimensions: 10'7" x 13'5"  
Calculated Area: 133 sq. ft  
Included: Yes

Heated: Yes  
Finished: Yes  
Enclosed: Yes  
Contiguous: Yes  
Permitted: Yes  
Wet space: No  
Addition: No  
Conversion: No

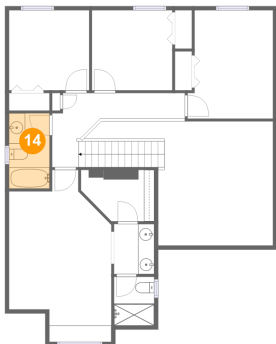
13 Floor 2 - Bath



Max Dimensions: 5'0" x 6'3"  
Calculated Area: 31 sq. ft  
Included: Yes

Heated: Yes  
Finished: Yes  
Enclosed: Yes  
Contiguous: Yes  
Permitted: Yes  
Wet space: Yes  
Addition: No  
Conversion: No

14 Floor 2 - Bath

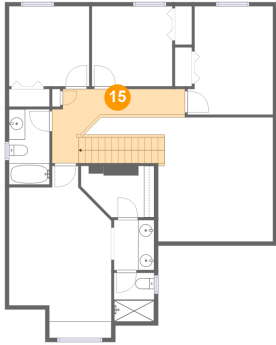


Max Dimensions: 5'0" x 9'4"  
Calculated Area: 47 sq. ft  
Included: Yes

Heated: Yes  
Finished: Yes  
Enclosed: Yes  
Contiguous: Yes  
Permitted: Yes  
Wet space: Yes  
Addition: No  
Conversion: No

2290 North Irvine Street, Cornelius, Washington County, Oregon,  
United States, 97113

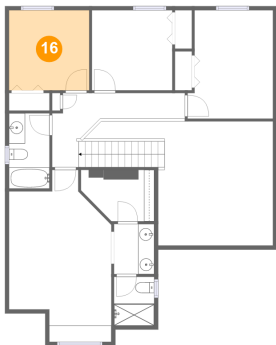
## 15 Floor 2 - Hall



Max Dimensions: 16'6" x 9'2"  
Calculated Area: 115 sq. ft  
Included: Yes

Heated: Yes  
Finished: Yes  
Enclosed: Yes  
Contiguous: Yes  
Permitted: Yes  
Wet space: No  
Addition: No  
Conversion: No

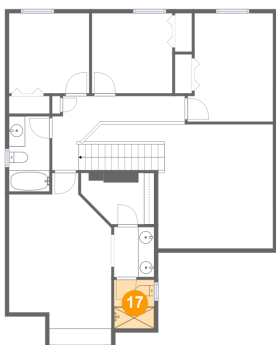
## 16 Floor 2 - Bedroom



Max Dimensions: 9'11" x 9'11"  
Calculated Area: 99 sq. ft  
Included: Yes

Heated: Yes  
Finished: Yes  
Enclosed: Yes  
Contiguous: Yes  
Permitted: Yes  
Wet space: No  
Addition: No  
Conversion: No

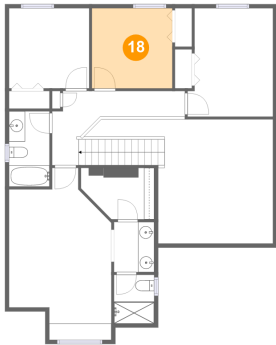
## 17 Floor 2 - Bath



Max Dimensions: 5'0" x 6'0"  
Calculated Area: 30 sq. ft  
Included: Yes

Heated: Yes  
Finished: Yes  
Enclosed: Yes  
Contiguous: Yes  
Permitted: Yes  
Wet space: Yes  
Addition: No  
Conversion: No

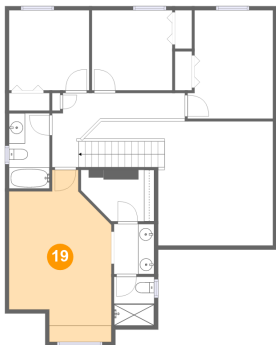
18 Floor 2 - Bedroom



Max Dimensions: 10'0" x 9'11"  
Calculated Area: 99 sq. ft  
Included: Yes

Heated: Yes  
Finished: Yes  
Enclosed: Yes  
Contiguous: Yes  
Permitted: Yes  
Wet space: No  
Addition: No  
Conversion: No

19 Floor 2 - Primary Bedroom



Max Dimensions: 12'8" x 19'3"  
Calculated Area: 217 sq. ft  
Included: Yes

Heated: Yes  
Finished: Yes  
Enclosed: Yes  
Contiguous: Yes  
Permitted: Yes  
Wet space: No  
Addition: No  
Conversion: No