



Home report


17400 Hughes Road, Westerly, Poolesville, Montgomery County,
Maryland, United States, 20837




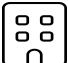
Property summary


 **1** Garages


 **3** Bedrooms

 **2** Bathrooms

 **1** Half baths

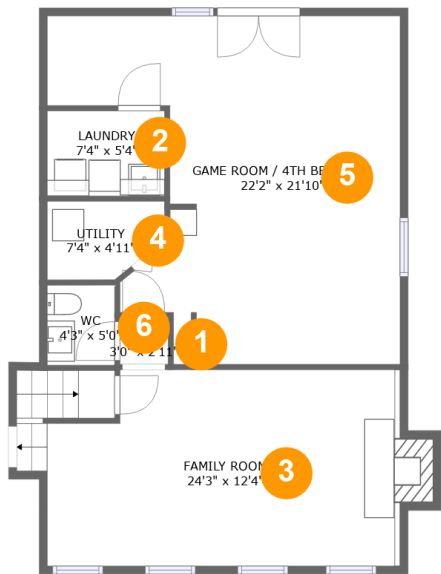
 **3** Floors

 **2,886** Gross living area sqft

 **3,390** Total sqft

Home report

17400 Hughes Road, Westerly, Poolesville, Montgomery County,
Maryland, United States, 20837



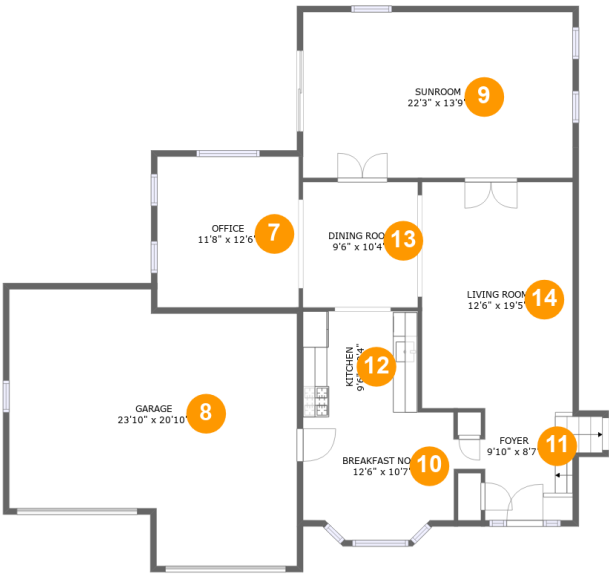
Room dimensions

Floor 1 Total sqft: 847 Living area: 837

#		Dimensions	sqft	Counted as living area
1	Hall	3'0" x 2'11"	9 sq. ft	Yes
2	Laundry	7'4" x 5'4"	39 sq. ft	Yes
3	Family Room	24'3" x 12'4"	291 sq. ft	Yes
4	Utility	7'4" x 4'11"	32 sq. ft	Yes
5	Game Room / 4th Bedroom	22'2" x 21'10"	367 sq. ft	Yes
6	WC	4'3" x 5'0"	21 sq. ft	Yes

Home report

17400 Hughes Road, Westerly, Poolesville, Montgomery County,
Maryland, United States, 20837



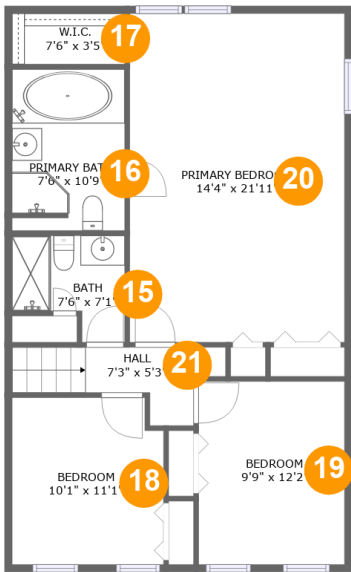
Room dimensions

Floor 2 Total sqft: 1670 Living area: 1176

#		Dimensions	sqft	Counted as living area
7	Office	11'8" x 12'6"	146 sq. ft	Yes
8	Garage	23'10" x 20'10"	462 sq. ft	No
9	Sunroom	22'3" x 13'9"	306 sq. ft	Yes
10	Breakfast Nook	12'6" x 10'7"	123 sq. ft	Yes
11	Foyer	9'10" x 8'7"	69 sq. ft	Yes
12	Kitchen	9'6" x 8'4"	79 sq. ft	Yes
13	Dining Room	9'6" x 10'4"	99 sq. ft	Yes
14	Living Room	12'6" x 19'5"	238 sq. ft	Yes

Home report

17400 Hughes Road, Westerly, Poolesville, Montgomery County, Maryland, United States, 20837

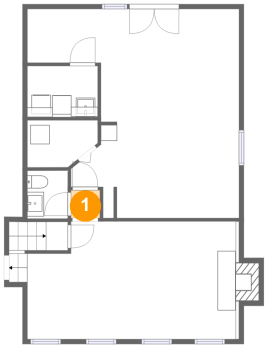


Room dimensions

Floor 3 Total sqft: 873 Living area: 873

#		Dimensions	sqft	Counted as living area
15	Bath	7'6" x 7'1"	44 sq. ft	Yes
16	Primary Bath	7'6" x 10'9"	81 sq. ft	Yes
17	W.I.C.	7'6" x 3'5"	25 sq. ft	Yes
18	Bedroom	10'1" x 11'1"	110 sq. ft	Yes
19	Bedroom	9'9" x 12'2"	119 sq. ft	Yes
20	Primary Bedroom	14'4" x 21'11"	314 sq. ft	Yes
21	Hall	7'3" x 5'3"	43 sq. ft	Yes

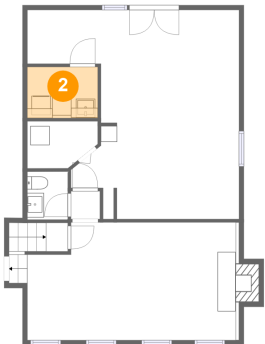
1 Floor 1 - Hall



Dimensions: 3'0" x 2'11"
Area: 9 sq. ft
Counted as living area: Yes

Heated: Yes
Finished: Yes
Enclosed: Yes
Contiguous: Yes
Permitted: Yes
Wet space: No
Addition: No
Conversion: No

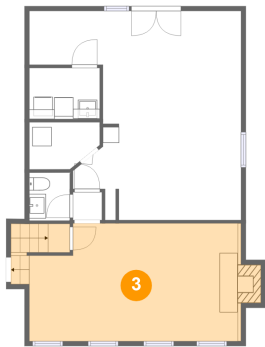
2 Floor 1 - Laundry



Dimensions: 7'4" x 5'4"
Area: 39 sq. ft
Counted as living area: Yes

Heated: Yes
Finished: Yes
Enclosed: Yes
Contiguous: Yes
Permitted: Yes
Wet space: No
Addition: No
Conversion: No

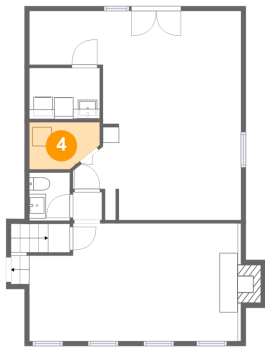
3 Floor 1 - Family Room



Dimensions: 24'3" x 12'4"
Area: 291 sq. ft
Counted as living area: Yes

Heated: Yes
Finished: Yes
Enclosed: Yes
Contiguous: Yes
Permitted: Yes
Wet space: No
Addition: No
Conversion: No

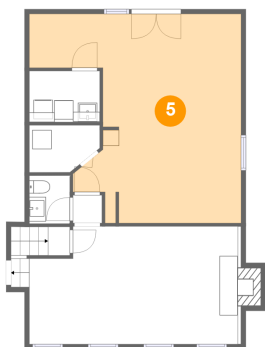
4 Floor 1 - Utility



Dimensions: 7'4" x 4'11"
Area: 32 sq. ft
Counted as living area: Yes

Heated: Yes
Finished: Yes
Enclosed: Yes
Contiguous: Yes
Permitted: Yes
Wet space: No
Addition: No
Conversion: No

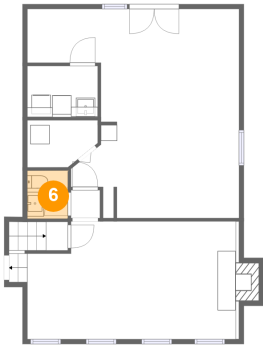
5 Floor 1 - Game Room / 4th Bedroom



Dimensions: 22'2" x 21'10"
Area: 367 sq. ft
Counted as living area: Yes

Heated: Yes
Finished: Yes
Enclosed: Yes
Contiguous: Yes
Permitted: Yes
Wet space: No
Addition: No
Conversion: No

6 Floor 1 - WC



Dimensions: 4'3" x 5'0"
Area: 21 sq. ft
Counted as living area: Yes

Heated: Yes
Finished: Yes
Enclosed: Yes
Contiguous: Yes
Permitted: Yes
Wet space: Yes
Addition: No
Conversion: No

7 Floor 2 - Office



Dimensions: 11'8" x 12'6"
Area: 146 sq. ft
Counted as living area: Yes

Heated: Yes
Finished: Yes
Enclosed: Yes
Contiguous: Yes
Permitted: Yes
Wet space: No
Addition: No
Conversion: No

8 Floor 2 - Garage



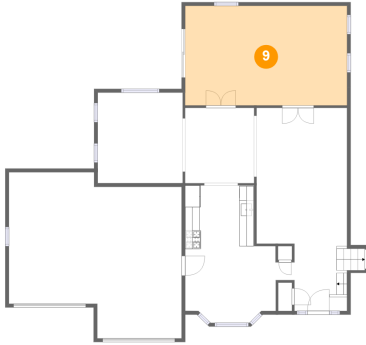
Dimensions: 23'10" x 20'10"
Area: 462 sq. ft
Counted as living area: No

Heated: No
Finished: No
Enclosed: Yes
Contiguous: Yes
Permitted: Yes
Wet space: No
Addition: No
Conversion: No

Home report

17400 Hughes Road, Westerly, Poolesville, Montgomery County,
Maryland, United States, 20837

9 Floor 2 - Sunroom



Dimensions: 22'3" x 13'9"
Area: 306 sq. ft
Counted as living area: Yes

Heated: Yes
Finished: Yes
Enclosed: Yes
Contiguous: Yes
Permitted: Yes
Wet space: No
Addition: No
Conversion: No

10 Floor 2 - Breakfast Nook



Dimensions: 12'6" x 10'7"
Area: 123 sq. ft
Counted as living area: Yes

Heated: Yes
Finished: Yes
Enclosed: Yes
Contiguous: Yes
Permitted: Yes
Wet space: No
Addition: No
Conversion: No

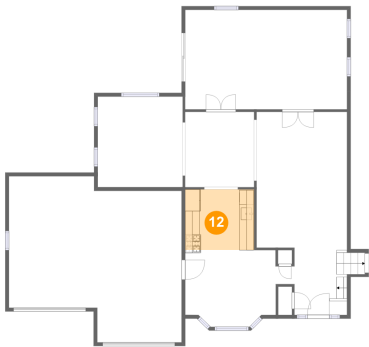
11 Floor 2 - Foyer



Dimensions: 9'10" x 8'7"
Area: 69 sq. ft
Counted as living area: Yes

Heated: Yes
Finished: Yes
Enclosed: Yes
Contiguous: Yes
Permitted: Yes
Wet space: No
Addition: No
Conversion: No

12 Floor 2 - Kitchen



Dimensions: 9'6" x 8'4"
Area: 79 sq. ft
Counted as living area: Yes

Heated: Yes
Finished: Yes
Enclosed: Yes
Contiguous: Yes
Permitted: Yes
Wet space: No
Addition: No
Conversion: No

13 Floor 2 - Dining Room



Dimensions: 9'6" x 10'4"
Area: 99 sq. ft
Counted as living area: Yes

Heated: Yes
Finished: Yes
Enclosed: Yes
Contiguous: Yes
Permitted: Yes
Wet space: No
Addition: No
Conversion: No

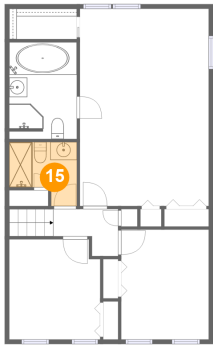
14 Floor 2 - Living Room



Dimensions: 12'6" x 19'5"
Area: 238 sq. ft
Counted as living area: Yes

Heated: Yes
Finished: Yes
Enclosed: Yes
Contiguous: Yes
Permitted: Yes
Wet space: No
Addition: No
Conversion: No

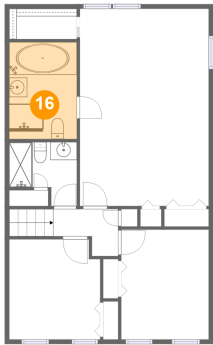
15 Floor 3 - Bath



Dimensions: 7'6" x 7'1"
Area: 44 sq. ft
Counted as living area: Yes

Heated: Yes
Finished: Yes
Enclosed: Yes
Contiguous: Yes
Permitted: Yes
Wet space: Yes
Addition: No
Conversion: No

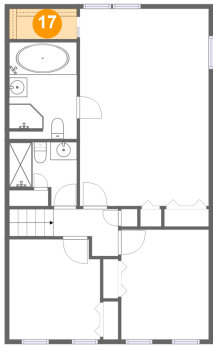
16 Floor 3 - Primary Bath



Dimensions: 7'6" x 10'9"
Area: 81 sq. ft
Counted as living area: Yes

Heated: Yes
Finished: Yes
Enclosed: Yes
Contiguous: Yes
Permitted: Yes
Wet space: Yes
Addition: No
Conversion: No

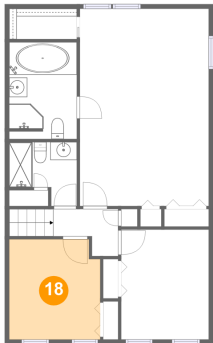
17 Floor 3 - W.I.C.



Dimensions: 7'6" x 3'5"
Area: 25 sq. ft
Counted as living area: Yes

Heated: Yes
Finished: Yes
Enclosed: Yes
Contiguous: Yes
Permitted: Yes
Wet space: No
Addition: No
Conversion: No

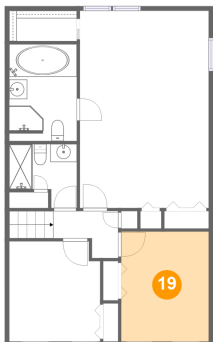
18 Floor 3 - Bedroom



Dimensions: 10'1" x 11'1"
Area: 110 sq. ft
Counted as living area: Yes

Heated: Yes
Finished: Yes
Enclosed: Yes
Contiguous: Yes
Permitted: Yes
Wet space: No
Addition: No
Conversion: No

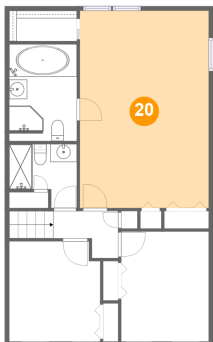
19 Floor 3 - Bedroom



Dimensions: 9'9" x 12'2"
Area: 119 sq. ft
Counted as living area: Yes

Heated: Yes
Finished: Yes
Enclosed: Yes
Contiguous: Yes
Permitted: Yes
Wet space: No
Addition: No
Conversion: No

20 Floor 3 - Primary Bedroom



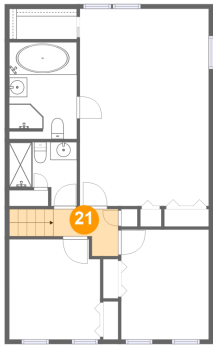
Dimensions: 14'4" x 21'11"
Area: 314 sq. ft
Counted as living area: Yes

Heated: Yes
Finished: Yes
Enclosed: Yes
Contiguous: Yes
Permitted: Yes
Wet space: No
Addition: No
Conversion: No

Home report

17400 Hughes Road, Westerly, Poolesville, Montgomery County,
Maryland, United States, 20837

21 Floor 3 - Hall



Dimensions: 7'3" x 5'3"
Area: 43 sq. ft
Counted as living area: Yes

Heated: Yes
Finished: Yes
Enclosed: Yes
Contiguous: Yes
Permitted: Yes
Wet space: No
Addition: No
Conversion: No