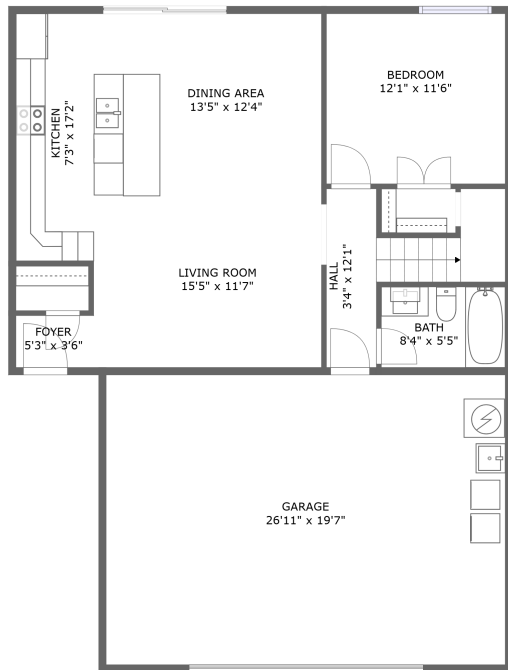
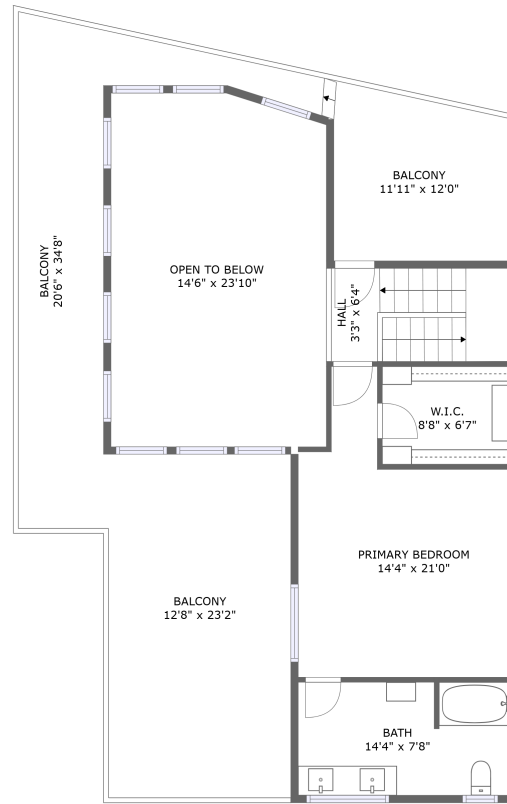


927 Alto Unit E ,Santa Fe,NM,US




FLOOR 1



FLOOR 2

Property summary

 **1** Garages

 **2** Bedrooms

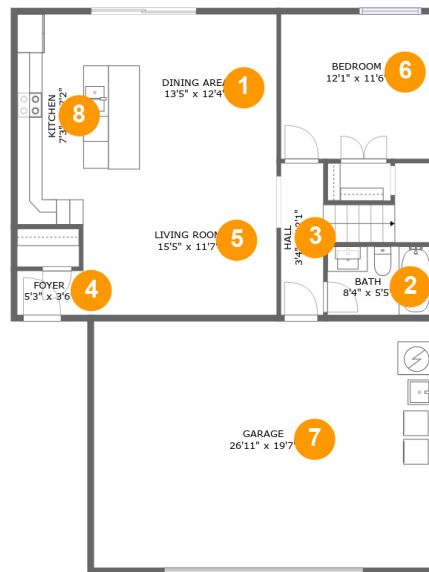
 **2** Bathrooms

 **0** Half baths

 **2** Floors

 **1,367** Gross living area sqft

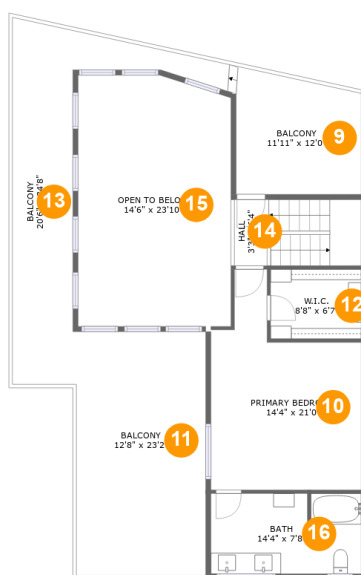
 **2,948** Total sqft

927 Alto Unit E ,Santa Fe,NM,US**Room dimensions**

Floor 1

Total sqft: 1391 Living area: 835

#		Dimensions	sqft	Counted as living area
1	Dining Area	13'5" x 12'4"	168 sq. ft	Yes
2	Bath	8'4" x 5'5"	46 sq. ft	Yes
3	Hall	3'4" x 12'1"	77 sq. ft	Yes
4	Foyer	5'3" x 3'6"	18 sq. ft	Yes
5	Living Room	15'5" x 11'7"	170 sq. ft	Yes
6	Bedroom	12'1" x 11'6"	139 sq. ft	Yes
7	Garage	26'11" x 19'7"	528 sq. ft	No
8	Kitchen	7'3" x 17'2"	122 sq. ft	Yes

927 Alto Unit E ,Santa Fe,NM,US**Room dimensions**

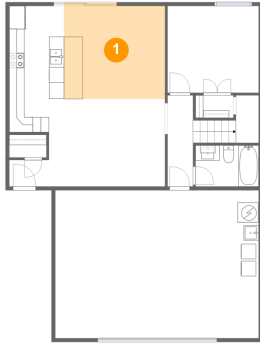
Floor 2

Total sqft: 1557 Living area: 532

#		Dimensions	sqft	Counted as living area
9	Balcony	11'11" x 12'0"	130 sq. ft	No
10	Primary Bedroom	14'4" x 21'0"	225 sq. ft	Yes
11	Balcony	12'8" x 23'2"	287 sq. ft	No
12	W.I.C.	8'8" x 6'7"	57 sq. ft	Yes
13	Balcony	20'6" x 34'8"	237 sq. ft	No
14	Hall	3'3" x 6'4"	76 sq. ft	Yes
15	Open To Below	14'6" x 23'10"	340 sq. ft	No
16	Bath	14'4" x 7'8"	108 sq. ft	Yes

927 Alto Unit E ,Santa Fe,NM,US

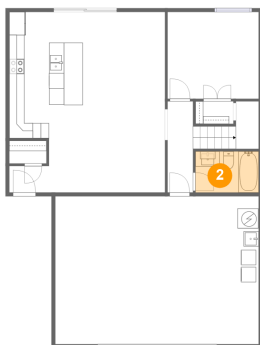
1 Floor 1 - Dining Area



Dimensions: 13'5" x 12'4"
Area: 168 sq. ft
Counted as living area: Yes

Heated: Yes
Finished: Yes
Enclosed: Yes
Contiguous: Yes
Permitted: Yes
Wet space: No
Addition: No
Conversion: No

2 Floor 1 - Bath

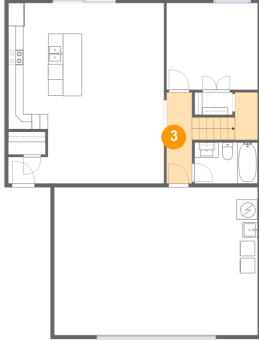


Dimensions: 8'4" x 5'5"
Area: 46 sq. ft
Counted as living area: Yes

Heated: Yes
Finished: Yes
Enclosed: Yes
Contiguous: Yes
Permitted: Yes
Wet space: Yes
Addition: No
Conversion: No

927 Alto Unit E ,Santa Fe,NM,US

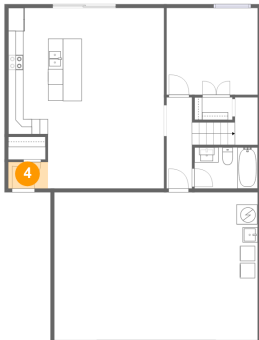
3 Floor 1 - Hall



Dimensions: 3'4" x 12'1"
Area: 77 sq. ft
Counted as living area: Yes

Heated: Yes
Finished: Yes
Enclosed: Yes
Contiguous: Yes
Permitted: Yes
Wet space: No
Addition: No
Conversion: No

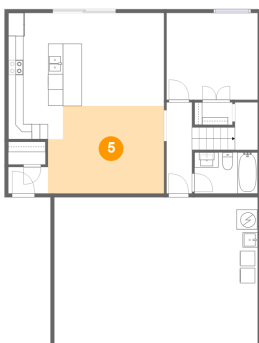
4 Floor 1 - Foyer



Dimensions: 5'3" x 3'6"
Area: 18 sq. ft
Counted as living area: Yes

Heated: Yes
Finished: Yes
Enclosed: Yes
Contiguous: Yes
Permitted: Yes
Wet space: No
Addition: No
Conversion: No

5 Floor 1 - Living Room

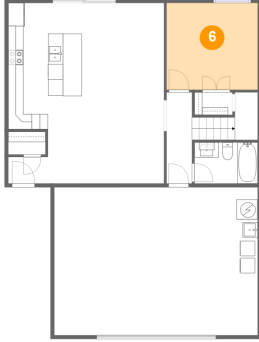


Dimensions: 15'5" x 11'7"
Area: 170 sq. ft
Counted as living area: Yes

Heated: Yes
Finished: Yes
Enclosed: Yes
Contiguous: Yes
Permitted: Yes
Wet space: No
Addition: No
Conversion: No

927 Alto Unit E ,Santa Fe,NM,US

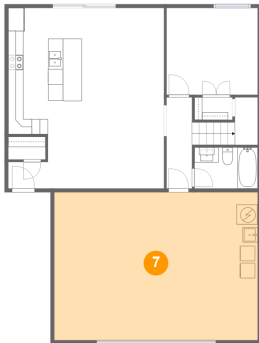
6 Floor 1 - Bedroom



Dimensions: 12'1" x 11'6"
Area: 139 sq. ft
Counted as living area: Yes

Heated: Yes
Finished: Yes
Enclosed: Yes
Contiguous: Yes
Permitted: Yes
Wet space: No
Addition: No
Conversion: No

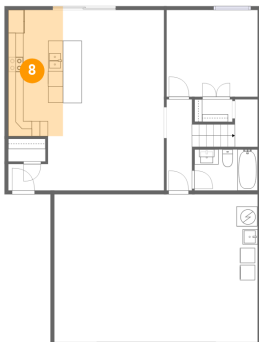
7 Floor 1 - Garage



Dimensions: 26'11" x 19'7"
Area: 528 sq. ft
Counted as living area: No

Heated: No
Finished: No
Enclosed: Yes
Contiguous: Yes
Permitted: Yes
Wet space: No
Addition: No
Conversion: No

8 Floor 1 - Kitchen

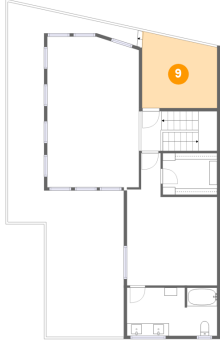


Dimensions: 7'3" x 17'2"
Area: 122 sq. ft
Counted as living area: Yes

Heated: Yes
Finished: Yes
Enclosed: Yes
Contiguous: Yes
Permitted: Yes
Wet space: No
Addition: No
Conversion: No

927 Alto Unit E ,Santa Fe,NM,US

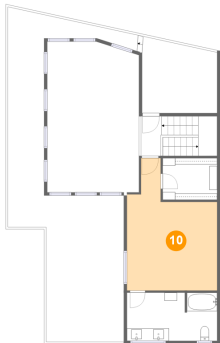
9 Floor 2 - Balcony



Dimensions: 11'11" x 12'0"
Area: 130 sq. ft
Counted as living area: No

Heated: No
Finished: Yes
Enclosed: No
Contiguous: Yes
Permitted: Yes
Wet space: No
Addition: No
Conversion: No

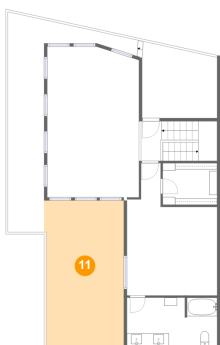
10 Floor 2 - Primary Bedroom



Dimensions: 14'4" x 21'0"
Area: 225 sq. ft
Counted as living area: Yes

Heated: Yes
Finished: Yes
Enclosed: Yes
Contiguous: Yes
Permitted: Yes
Wet space: No
Addition: No
Conversion: No

11 Floor 2 - Balcony

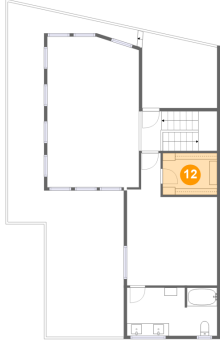


Dimensions: 12'8" x 23'2"
Area: 287 sq. ft
Counted as living area: No

Heated: No
Finished: Yes
Enclosed: No
Contiguous: Yes
Permitted: Yes
Wet space: No
Addition: No
Conversion: No

927 Alto Unit E ,Santa Fe,NM,US

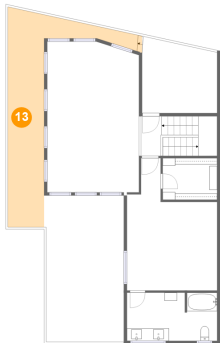
12 Floor 2 - W.I.C.



Dimensions: 8'8" x 6'7"
Area: 57 sq. ft
Counted as living area: Yes

Heated: Yes
Finished: Yes
Enclosed: Yes
Contiguous: Yes
Permitted: Yes
Wet space: No
Addition: No
Conversion: No

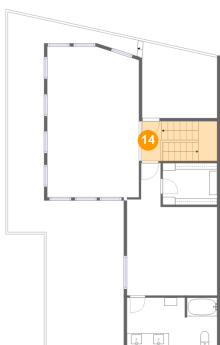
13 Floor 2 - Balcony



Dimensions: 20'6" x 34'8"
Area: 237 sq. ft
Counted as living area: No

Heated: No
Finished: Yes
Enclosed: No
Contiguous: Yes
Permitted: Yes
Wet space: No
Addition: No
Conversion: No

14 Floor 2 - Hall

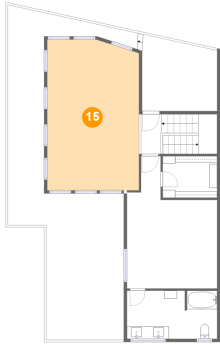


Dimensions: 3'3" x 6'4"
Area: 76 sq. ft
Counted as living area: Yes

Heated: Yes
Finished: Yes
Enclosed: Yes
Contiguous: Yes
Permitted: Yes
Wet space: No
Addition: No
Conversion: No

927 Alto Unit E ,Santa Fe,NM,US

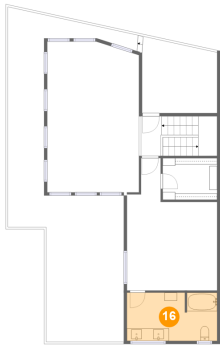
15 Floor 2 - Open To Below



Dimensions: 14'6" x 23'10"
Area: 340 sq. ft
Counted as living area: No

Heated: No
Finished: No
Enclosed: No
Contiguous: Yes
Permitted: No
Wet space: No
Addition: No
Conversion: No

16 Floor 2 - Bath



Dimensions: 14'4" x 7'8"
Area: 108 sq. ft
Counted as living area: Yes

Heated: Yes
Finished: Yes
Enclosed: Yes
Contiguous: Yes
Permitted: Yes
Wet space: Yes
Addition: No
Conversion: No