

Home report

242 Escarpment Crescent, Kanata Lakes, Kanata, Ontario,
Canada, K2T 0L6



Total Area: 2395 sq. ft

Below Ground: 150 sq. ft, Floor 2: 1104 sq. ft, Floor 3: 1141 sq. ft

Excluded: Utility 165 sq. ft, Bath 48 sq. ft, Room 559 sq. ft, Hall 91 sq. ft, Garage 374 sq. ft, Opentobelow 79 sq. ft, Walls: 258 sq. ft

Property summary

 **3** Floors

 **4** Bedrooms

 **2** Bathrooms

Home report

**242 Escarpment Crescent, Kanata Lakes, Kanata, Ontario,
Canada, K2T 0L6**

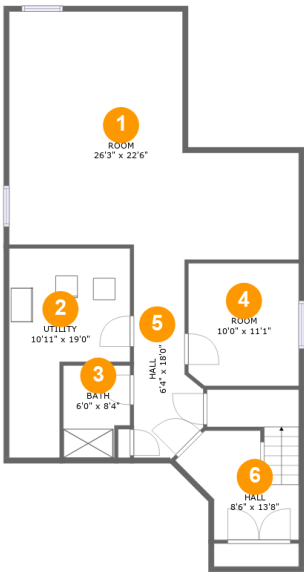


1
Half baths



1
Garages

242 Escarpment Crescent, Kanata Lakes, Kanata, Ontario,
Canada, K2T 0L6



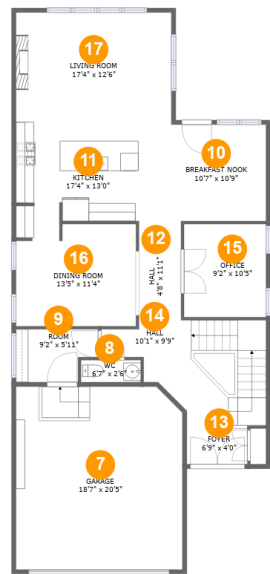
Room dimensions

Floor 1 Below ground Total:150sqft Excluded: 863sqft

#		Max Dimensions	sqft	Included
1	Room	26'3" x 22'6"	441 sq. ft	No
2	Utility	10'11" x 19'0"	153 sq. ft	No
3	Bath	6'0" x 8'4"	47 sq. ft	No
4	Room	10'0" x 11'1"	111 sq. ft	No
5	Hall	6'4" x 18'0"	91 sq. ft	No
6	Hall	8'6" x 13'8"	117 sq. ft	Yes

Home report

242 Escarpment Crescent, Kanata Lakes, Kanata, Ontario,
Canada, K2T 0L6



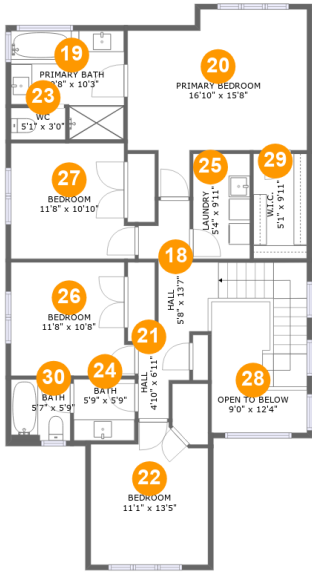
Room dimensions

Floor 2 Total:1104sqft Excluded: 374sqft

#		Max Dimensions	sqft	Included
7	Garage	18'7" x 20'5"	374 sq. ft	No
8	WC	6'7" x 2'6"	16 sq. ft	Yes
9	Room	9'2" x 5'11"	48 sq. ft	Yes
10	Breakfast Nook	10'7" x 10'9"	114 sq. ft	Yes
11	Kitchen	17'4" x 13'0"	195 sq. ft	Yes
12	Hall	4'8" x 11'1"	52 sq. ft	Yes
13	Foyer	6'9" x 4'0"	27 sq. ft	Yes
14	Hall	10'1" x 9'9"	159 sq. ft	Yes
15	Office	9'2" x 10'5"	95 sq. ft	Yes
16	Dining Room	13'5" x 11'4"	143 sq. ft	Yes
17	Living Room	17'4" x 12'6"	216 sq. ft	Yes

Home report

242 Escarpment Crescent, Kanata Lakes, Kanata, Ontario,
Canada, K2T 0L6



Room dimensions

Floor 3 Total:1141sqft Excluded: 79sqft

#		Max Dimensions	sqft	Included
18	Hall	5'8" x 13'7"	124 sq. ft	Yes
19	Primary Bath	10'8" x 10'3"	91 sq. ft	Yes
20	Primary Bedroom	16'10" x 15'8"	223 sq. ft	Yes
21	Hall	4'10" x 6'11"	26 sq. ft	Yes
22	Bedroom	11'1" x 13'5"	132 sq. ft	Yes
23	WC	5'1" x 3'0"	15 sq. ft	Yes
24	Bath	5'9" x 5'9"	33 sq. ft	Yes
25	Laundry	5'4" x 9'11"	53 sq. ft	Yes
26	Bedroom	11'8" x 10'8"	117 sq. ft	Yes
27	Bedroom	11'8" x 10'10"	119 sq. ft	Yes
28	Open To Below	9'0" x 12'4"	79 sq. ft	No

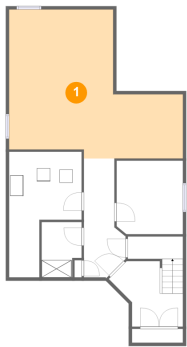
Home report

**242 Escarpment Crescent, Kanata Lakes, Kanata, Ontario,
Canada, K2T 0L6**

#		Max Dimensions	sqft	Included
29	W.I.C.	5'1" x 9'11"	50 sq. ft	Yes
30	Bath	5'7" x 5'9"	32 sq. ft	Yes

242 Escarpment Crescent, Kanata Lakes, Kanata, Ontario,
Canada, K2T 0L6

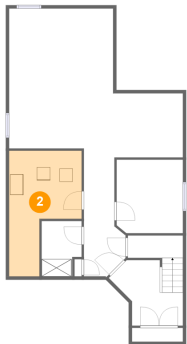
1 Floor 1 - Room



Max Dimensions: 26'3" x 22'6"
Calculated Area: 441 sq. ft
Included: No

Heated: Yes
Finished: No
Enclosed: Yes
Contiguous: Yes
Permitted: Yes
Wet space: No
Addition: No
Conversion: No

2 Floor 1 - Utility

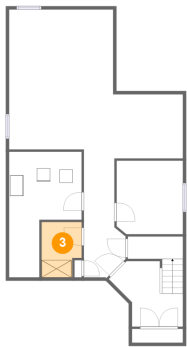


Max Dimensions: 10'11" x 19'0"
Calculated Area: 153 sq. ft
Included: No

Heated: Yes
Finished: No
Enclosed: Yes
Contiguous: Yes
Permitted: Yes
Wet space: No
Addition: No
Conversion: No

242 Escarpment Crescent, Kanata Lakes, Kanata, Ontario,
Canada, K2T 0L6

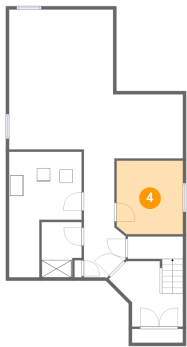
3 Floor 1 - Bath



Max Dimensions: 6'0" x 8'4"
Calculated Area: 47 sq. ft
Included: No

Heated: Yes
Finished: No
Enclosed: Yes
Contiguous: Yes
Permitted: Yes
Wet space: Yes
Addition: No
Conversion: No

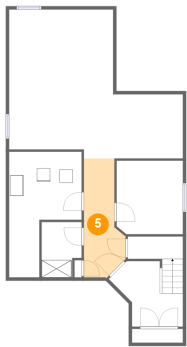
4 Floor 1 - Room



Max Dimensions: 10'0" x 11'1"
Calculated Area: 111 sq. ft
Included: No

Heated: Yes
Finished: No
Enclosed: Yes
Contiguous: Yes
Permitted: Yes
Wet space: No
Addition: No
Conversion: No

5 Floor 1 - Hall

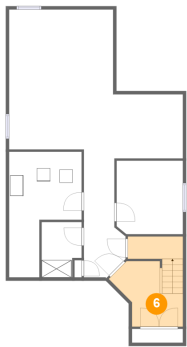


Max Dimensions: 6'4" x 18'0"
Calculated Area: 91 sq. ft
Included: No

Heated: Yes
Finished: No
Enclosed: Yes
Contiguous: Yes
Permitted: Yes
Wet space: No
Addition: No
Conversion: No

242 Escarpment Crescent, Kanata Lakes, Kanata, Ontario,
Canada, K2T 0L6

6 Floor 1 - Hall



Max Dimensions: 8'6" x 13'8"
Calculated Area: 117 sq. ft
Included: No

Heated: Yes
Finished: Yes
Enclosed: Yes
Contiguous: No
Permitted: Yes
Wet space: No
Addition: No
Conversion: No

7 Floor 2 - Garage



Max Dimensions: 18'7" x 20'5"
Calculated Area: 374 sq. ft
Included: No

Heated: No
Finished: No
Enclosed: Yes
Contiguous: Yes
Permitted: Yes
Wet space: No
Addition: No
Conversion: No

8 Floor 2 - WC



Max Dimensions: 6'7" x 2'6"
Calculated Area: 16 sq. ft
Included: Yes

Heated: Yes
Finished: Yes
Enclosed: Yes
Contiguous: Yes
Permitted: Yes
Wet space: No
Addition: No
Conversion: No

242 Escarpment Crescent, Kanata Lakes, Kanata, Ontario,
Canada, K2T 0L6

9 Floor 2 - Room



Max Dimensions: 9'2" x 5'11"
Calculated Area: 48 sq. ft
Included: Yes

Heated: Yes
Finished: Yes
Enclosed: Yes
Contiguous: Yes
Permitted: Yes
Wet space: No
Addition: No
Conversion: No

10 Floor 2 - Breakfast Nook



Max Dimensions: 10'7" x 10'9"
Calculated Area: 114 sq. ft
Included: Yes

Heated: Yes
Finished: Yes
Enclosed: Yes
Contiguous: Yes
Permitted: Yes
Wet space: No
Addition: No
Conversion: No

11 Floor 2 - Kitchen



Max Dimensions: 17'4" x 13'0"
Calculated Area: 195 sq. ft
Included: Yes

Heated: Yes
Finished: Yes
Enclosed: Yes
Contiguous: Yes
Permitted: Yes
Wet space: No
Addition: No
Conversion: No

242 Escarpment Crescent, Kanata Lakes, Kanata, Ontario,
Canada, K2T 0L6

12 Floor 2 - Hall



Max Dimensions: 4'8" x 11'1"
Calculated Area: 52 sq. ft
Included: Yes

Heated: Yes
Finished: Yes
Enclosed: Yes
Contiguous: Yes
Permitted: Yes
Wet space: No
Addition: No
Conversion: No

13 Floor 2 - Foyer



Max Dimensions: 6'9" x 4'0"
Calculated Area: 27 sq. ft
Included: Yes

Heated: Yes
Finished: Yes
Enclosed: Yes
Contiguous: Yes
Permitted: Yes
Wet space: No
Addition: No
Conversion: No

14 Floor 2 - Hall



Max Dimensions: 10'1" x 9'9"
Calculated Area: 159 sq. ft
Included: Yes

Heated: Yes
Finished: Yes
Enclosed: Yes
Contiguous: Yes
Permitted: Yes
Wet space: No
Addition: No
Conversion: No

242 Escarpment Crescent, Kanata Lakes, Kanata, Ontario,
Canada, K2T 0L6

15 Floor 2 - Office



Max Dimensions: 9'2" x 10'5"
Calculated Area: 95 sq. ft
Included: Yes

Heated: Yes
Finished: Yes
Enclosed: Yes
Contiguous: Yes
Permitted: Yes
Wet space: No
Addition: No
Conversion: No

16 Floor 2 - Dining Room



Max Dimensions: 13'5" x 11'4"
Calculated Area: 143 sq. ft
Included: Yes

Heated: Yes
Finished: Yes
Enclosed: Yes
Contiguous: Yes
Permitted: Yes
Wet space: No
Addition: No
Conversion: No

17 Floor 2 - Living Room



Max Dimensions: 17'4" x 12'6"
Calculated Area: 216 sq. ft
Included: Yes

Heated: Yes
Finished: Yes
Enclosed: Yes
Contiguous: Yes
Permitted: Yes
Wet space: No
Addition: No
Conversion: No

242 Escarpment Crescent, Kanata Lakes, Kanata, Ontario,
Canada, K2T 0L6

18 Floor 3 - Hall



Max Dimensions: 5'8" x 13'7"
Calculated Area: 124 sq. ft
Included: Yes

Heated: Yes
Finished: Yes
Enclosed: Yes
Contiguous: Yes
Permitted: Yes
Wet space: No
Addition: No
Conversion: No

19 Floor 3 - Primary Bath



Max Dimensions: 10'8" x 10'3"
Calculated Area: 91 sq. ft
Included: Yes

Heated: Yes
Finished: Yes
Enclosed: Yes
Contiguous: Yes
Permitted: Yes
Wet space: Yes
Addition: No
Conversion: No

20 Floor 3 - Primary Bedroom



Max Dimensions: 16'10" x 15'8"
Calculated Area: 223 sq. ft
Included: Yes

Heated: Yes
Finished: Yes
Enclosed: Yes
Contiguous: Yes
Permitted: Yes
Wet space: No
Addition: No
Conversion: No

242 Escarpment Crescent, Kanata Lakes, Kanata, Ontario,
Canada, K2T 0L6

21 Floor 3 - Hall



Max Dimensions: 4'10" x 6'11"
Calculated Area: 26 sq. ft
Included: Yes

Heated: Yes
Finished: Yes
Enclosed: Yes
Contiguous: Yes
Permitted: Yes
Wet space: No
Addition: No
Conversion: No

22 Floor 3 - Bedroom



Max Dimensions: 11'1" x 13'5"
Calculated Area: 132 sq. ft
Included: Yes

Heated: Yes
Finished: Yes
Enclosed: Yes
Contiguous: Yes
Permitted: Yes
Wet space: No
Addition: No
Conversion: No

23 Floor 3 - WC



Max Dimensions: 5'1" x 3'0"
Calculated Area: 15 sq. ft
Included: Yes

Heated: Yes
Finished: Yes
Enclosed: Yes
Contiguous: Yes
Permitted: Yes
Wet space: Yes
Addition: No
Conversion: No

242 Escarpment Crescent, Kanata Lakes, Kanata, Ontario,
Canada, K2T 0L6

24 Floor 3 - Bath



Max Dimensions: 5'9" x 5'9"
Calculated Area: 33 sq. ft
Included: Yes

Heated: Yes
Finished: Yes
Enclosed: Yes
Contiguous: Yes
Permitted: Yes
Wet space: Yes
Addition: No
Conversion: No

25 Floor 3 - Laundry



Max Dimensions: 5'4" x 9'11"
Calculated Area: 53 sq. ft
Included: Yes

Heated: Yes
Finished: Yes
Enclosed: Yes
Contiguous: Yes
Permitted: Yes
Wet space: No
Addition: No
Conversion: No

26 Floor 3 - Bedroom



Max Dimensions: 11'8" x 10'8"
Calculated Area: 117 sq. ft
Included: Yes

Heated: Yes
Finished: Yes
Enclosed: Yes
Contiguous: Yes
Permitted: Yes
Wet space: No
Addition: No
Conversion: No

242 Escarpment Crescent, Kanata Lakes, Kanata, Ontario,
Canada, K2T 0L6

27 Floor 3 - Bedroom



Max Dimensions: 11'8" x 10'10"
Calculated Area: 119 sq. ft
Included: Yes

Heated: Yes
Finished: Yes
Enclosed: Yes
Contiguous: Yes
Permitted: Yes
Wet space: No
Addition: No
Conversion: No

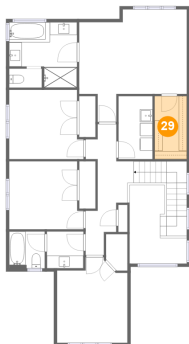
28 Floor 3 - Open To Below



Max Dimensions: 9'0" x 12'4"
Calculated Area: 79 sq. ft
Included: No

Heated: No
Finished: No
Enclosed: No
Contiguous: Yes
Permitted: No
Wet space: No
Addition: No
Conversion: No

29 Floor 3 - W.I.C.

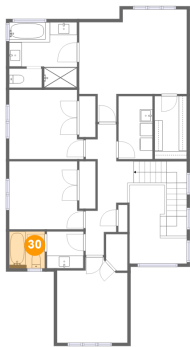


Max Dimensions: 5'1" x 9'11"
Calculated Area: 50 sq. ft
Included: Yes

Heated: Yes
Finished: Yes
Enclosed: Yes
Contiguous: Yes
Permitted: Yes
Wet space: No
Addition: No
Conversion: No

242 Escarpment Crescent, Kanata Lakes, Kanata, Ontario,
Canada, K2T 0L6

30 Floor 3 - Bath



Max Dimensions: 5'7" x 5'9"
Calculated Area: 32 sq. ft
Included: Yes

Heated: Yes
Finished: Yes
Enclosed: Yes
Contiguous: Yes
Permitted: Yes
Wet space: Yes
Addition: No
Conversion: No