

**SKG Productions**  
 780.887.7491  
 info@skgproductions.ca



**Date** June 21, 2025  
**Address** 976 Hollingsworth Bend  
**City** Edmonton  
**Agent** Andrew Jones  
**Property Type** Two-Storey

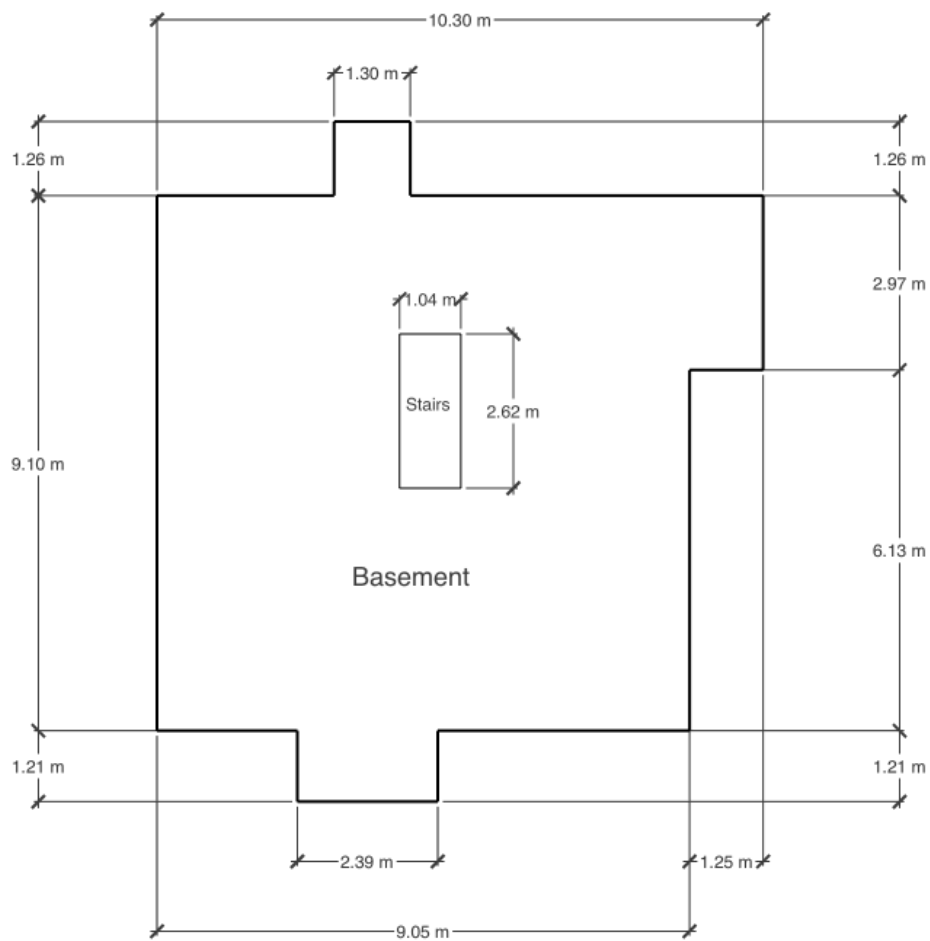
		Square Feet	Square Meters
Level 2	Above Grade	1356.58	126.03
Main Level	Above Grade	1170.36	108.73
Basement	Below Grade	945.72	87.86
Total	Above Grade	2526.94	234.76

Level 2		Feet	Meters
	Bonus Room	17 ft, 1 in x 13 ft, 7 in	5.22 m x 4.15 m
	Primary Bedroom	16 ft, 11 in x 16 ft, 11 in	5.17 m x 5.17 m
	Ensuite	11 ft, 6 in x 11 ft, 8 in	3.50 m x 3.56 m
	WIC	5 ft, 8 in x 5 ft, 11 in	1.72 m x 1.82 m
	Bedroom 2	14 ft, 10 in x 9 ft, 4 in	4.51 m x 2.83 m
	Bedroom 3	14 ft, 6 in x 9 ft, 4 in	4.43 m x 2.83 m
	Bathroom	8 ft, 6 in x 9 ft, 6 in	2.58 m x 2.89 m

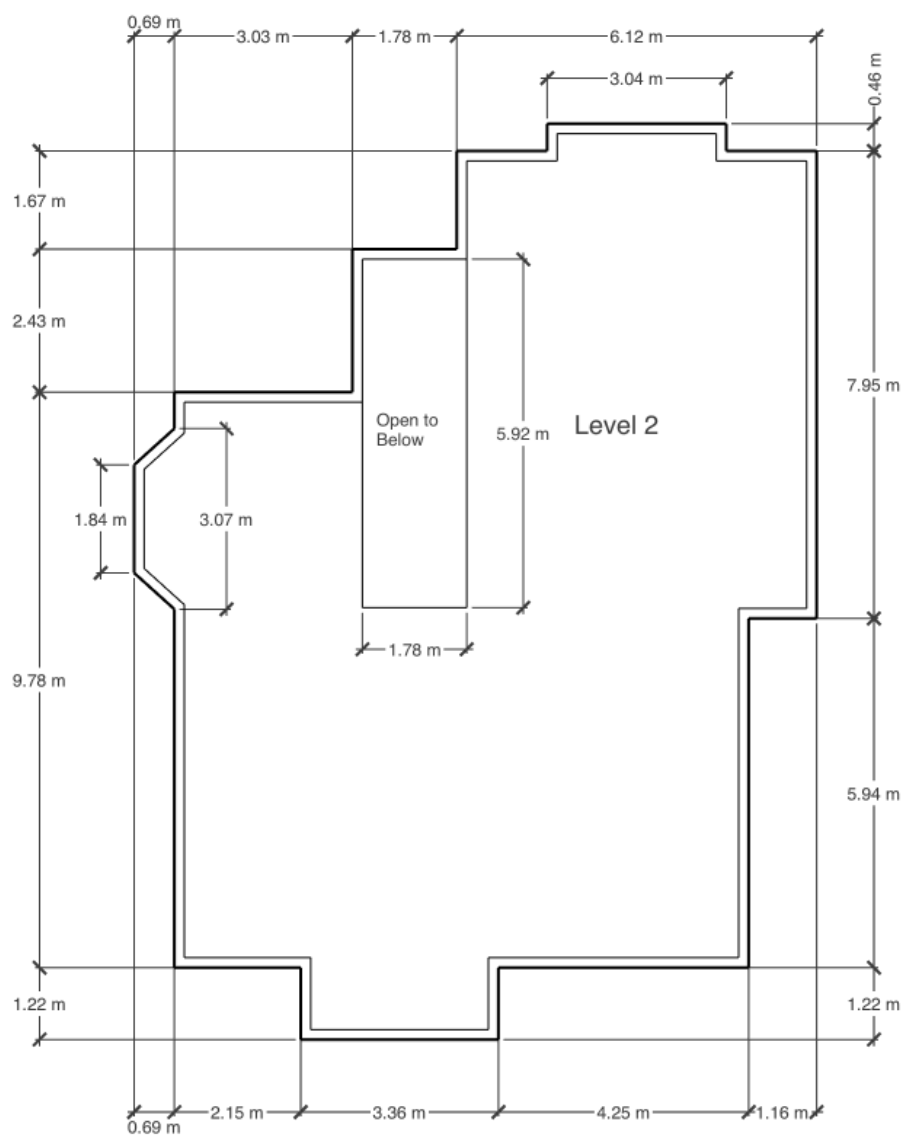
Main Level		Feet	Meters
	Living Room	14 ft, 11 in x 16 ft, 3 in	4.55 m x 4.94 m
	Dining Room	9 ft, 5 in x 9 ft, 10 in	2.87 m x 3.01 m
	Kitchen	16 ft, 11 in x 9 ft, 11 in	5.15 m x 3.03 m
	Office/Den	13 ft, 5 in x 11 ft, 7 in	4.10 m x 3.54 m
	Bathroom	8 ft, 2 in x 7 ft, 6 in	2.49 m x 2.28 m
	Laundry	9 ft, 5 in x 15 ft, 7 in	2.88 m x 4.75 m
	Garage	23 ft, 5 in x 19 ft, 4 in	7.15 m x 5.89 m

Basement	Feet		Meters	
	Family Room	14 ft, 2 in x 18 ft, 3 in	4.32 m x 5.57 m	
	Rec Room	14 ft, 8 in x 14 ft, 10 in	4.47 m x 4.51 m	
	Bedroom	10 ft, 7 in x 11 ft, 1 in	3.23 m x 3.38 m	
	Bathroom	7 ft, 9 in x 6 ft, 6 in	2.36 m x 1.99 m	
	Utility	15 ft, 4 in x 12 ft, 3 in	4.68 m x 3.73 m	

# 976 Hollingsworth Bend Edmonton



## 976 Hollingsworth Bend Edmonton



# 976 Hollingsworth Bend Edmonton

