

4001 Golf Creek Dr, Champaign, IL, US

Gross Living Area: 3233 sq. ft



Space	Area (sq. ft)	Calculation <small>Coordinate Polygon Area Algorithm using inches</small>
FLOOR 1 (Living area)	2240	$ \begin{aligned} & -((337.7 + 605.9) * (18.8 - 18.8) + (605.9 + 605.9) * (18.8 - 92.5) + (605.9 + 887.1) * (92.5 - 92.5) \\ & + (887.1 + 887.1) * (92.5 - 459) + (887.1 + 790.3) * (459 - 459) + (790.3 + 790.3) * (459 - 501.3) + \\ & (790.3 + 657.4) * (501.3 - 501.3) + (657.4 + 657.4) * (501.3 - 459) + (657.4 + 597.9) * (459 - 459) \\ & + (597.9 + 597.9) * (459 - 420.2) + (597.9 + 408.4) * (420.2 - 420.2) + (408.4 + 408.4) * (420.2 - \\ & 549) + (408.4 + 163.8) * (549 - 549) + (163.8 + 163.8) * (549 - 543) + (163.8 + 157.8) * (543 - \\ & 543) + (157.8 + 157.8) * (543 - 435.2) + (157.8 + 92.1) * (435.2 - 435.2) + (92.1 + 92.1) * (435.2 - \\ & 210.2) + (92.1 + 157.8) * (210.2 - 210.2) + (157.8 + 157.8) * (210.2 - 92.5) + (157.8 + 337.7) * \end{aligned} $

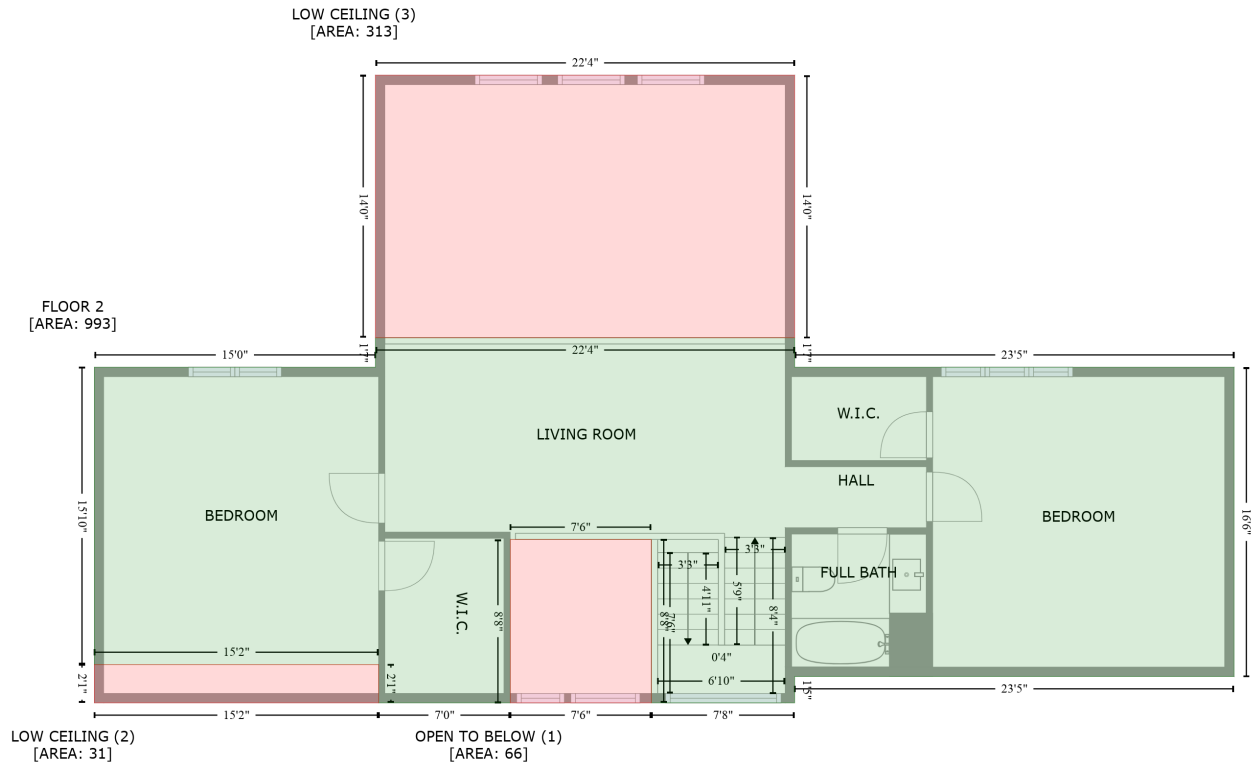
4001 Golf Creek Dr,Champaign,IL,US

Gross Living Area: 3233 sq. ft

Space	Area (sq. ft)	Calculation <small>Coordinate Polygon Area Algorithm using inches</small>
GARAGE (Non-living area)	682	$(92.5 - 92.5) + (337.7 + 337.7) * (92.5 - 18.8) * 0.5 * 0.00694 + -((163.8 + 309.8) * (216.2 - 218.5) + (309.8 + 309.8) * (218.5 - 217) + (309.8 + 163.8) * (217 - 216.2)) * 0.5 * 0.00694$ $-((163.8 + 163.8) * (543 - 549) + (163.8 + 369) * (549 - 549) + (369 + 369) * (549 - 615.3) + (369 + 402.4) * (615.3 - 615.3) + (402.4 + 402.4) * (615.3 - 621.3) + (402.4 + 408.4) * (621.3 - 621.3) + (408.4 + 408.4) * (621.3 - 886) + (408.4 + 110.2) * (886 - 886) + (110.2 + 110.2) * (886 - 543) + (110.2 + 163.8) * (543 - 543)) * 0.5 * 0.00694$
OTHER ROOM (Non-living area)	18	$-((408.4 + 408.4) * (549 - 621.3) + (408.4 + 402.4) * (621.3 - 621.3) + (402.4 + 402.4) * (621.3 - 615.3) + (402.4 + 369) * (615.3 - 615.3) + (369 + 369) * (615.3 - 549) + (369 + 408.4) * (549 - 549)) * 0.5 * 0.00694$

4001 Golf Creek Dr, Champaign, IL, US

Gross Living Area: 3233 sq. ft



Space	Area (sq. ft)	Calculation
FLOOR 2 (Living area)	993	Coordinate Polygon Area Algorithm using inches $-((605.9 + 605.9) * (186.7 - 205.6) + (605.9 + 887.1) * (205.6 - 205.6) + (887.1 + 887.1) * (205.6 - 403.4) + (887.1 + 605.9) * (403.4 - 403.4) + (605.9 + 605.9) * (403.4 - 420.2) + (605.9 + 514.3) * (420.2 - 420.2) + (514.3 + 514.3) * (420.2 - 315.8) + (514.3 + 424) * (315.8 - 315.8) + (424 + 424) * (315.8 - 420.2) + (424 + 339.7) * (420.2 - 420.2) + (339.7 + 339.7) * (420.2 - 395.7) + (339.7 + 157.8) * (395.7 - 395.7) + (157.8 + 157.8) * (395.7 - 205.6) + (157.8 + 337.7) * (205.6 - 205.6) + (337.7 + 337.7) * (205.6 - 186.7) + (337.7 + 605.9) * (186.7 - 186.7)) * 0.5 * 0.00694$
OPEN TO BELOW (Non-living area)	66	$-((514.3 + 514.3) * (315.8 - 420.2) + (514.3 + 424) * (420.2 - 420.2) + (424 + 424) * (420.2 - 315.8) + (424 + 514.3) * (315.8 - 315.8)) * 0.5 * 0.00694$
LOW CEILING (Non-living area)	31	$-((339.7 + 339.7) * (395.7 - 420.2) + (339.7 + 157.8) * (420.2 - 420.2) + (157.8 + 157.8) * (420.2 - 395.7) + (157.8 + 339.7) * (395.7 - 395.7)) * 0.5 * 0.00694$
LOW CEILING (Non-living area)	313	$-((605.9 + 605.9) * (18.8 - 186.7) + (605.9 + 337.7) * (186.7 - 186.7) + (337.7 + 337.7) * (186.7 - 18.8) + (337.7 + 605.9) * (18.8 - 18.8)) * 0.5 * 0.00694$