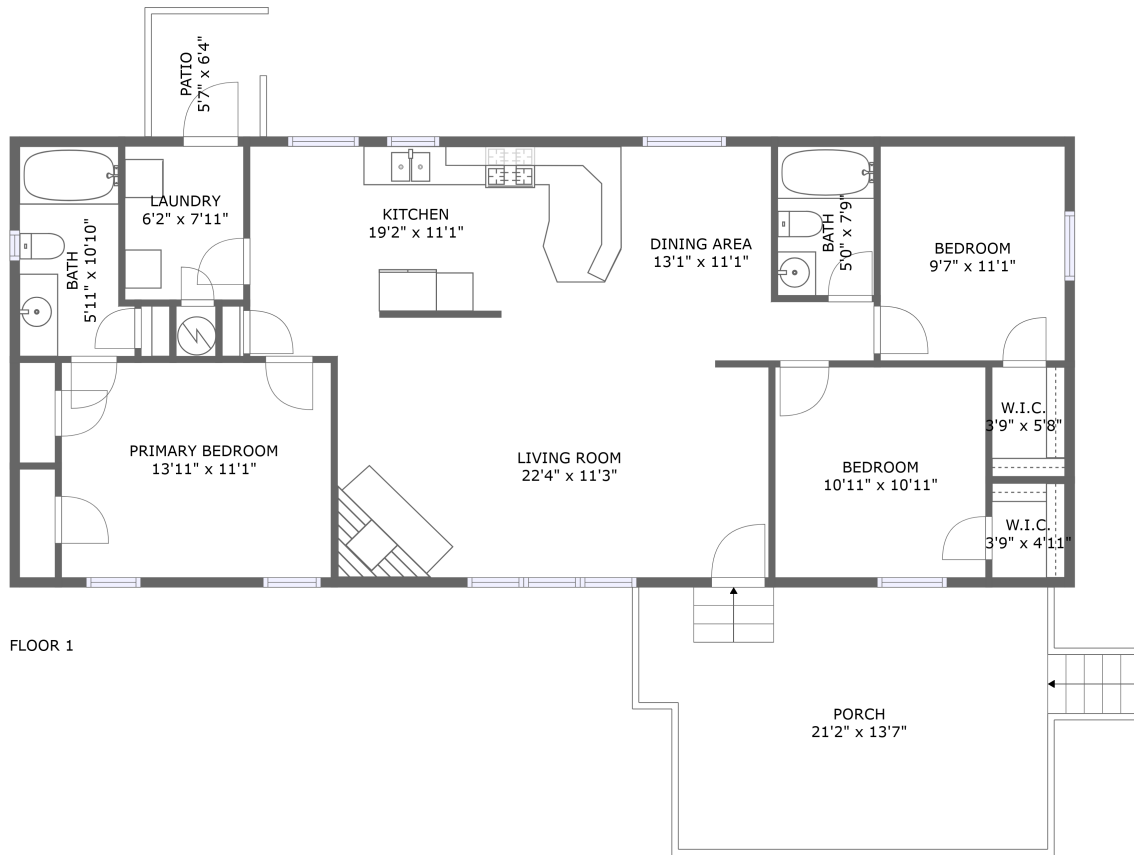


# 100 Turtle Lane, Ranson, Jefferson County, West Virginia, United States, 25438

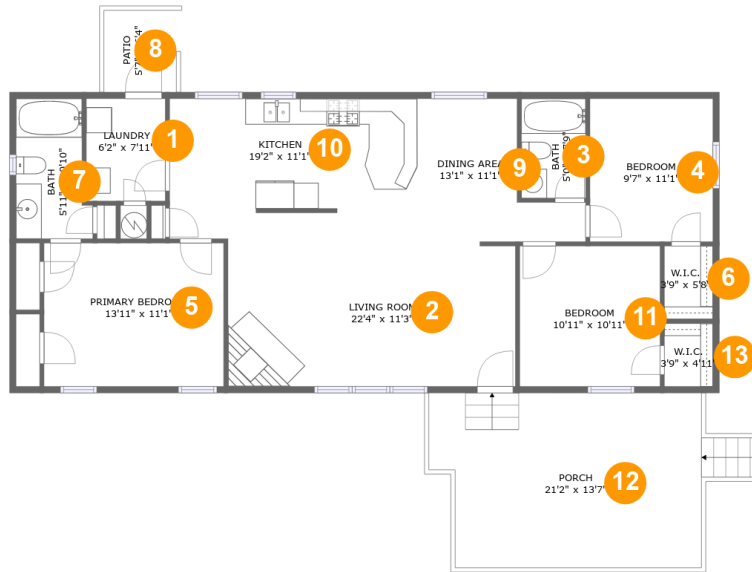


## Property Summary

 **0** garages     **3** bedrooms     **2** bathrooms     **0** half baths

 **1** floors     **1,284** Gross Living Area sqft     **1,606** total sqft

# 100 Turtle Lane, Ranson, Jefferson County, West Virginia, United States, 25438



## Room Dimensions

Floor 1

Total sqft: 1606

Living area: 1284

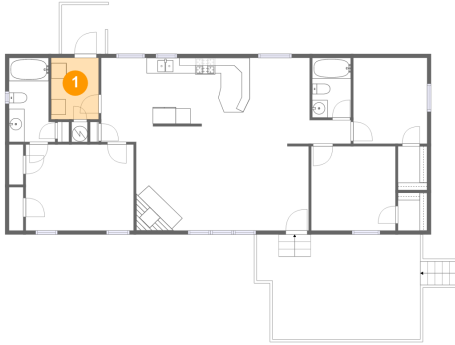
#	Room name	Dimensions	Area (sqft)	Counted as Living Area
1	Laundry	6'2" x 7'11"	49 sq. ft	Yes
2	Living Room	22'4" x 11'3"	249 sq. ft	Yes
3	Bath	5'0" x 7'9"	38 sq. ft	Yes
4	Bedroom	9'7" x 11'1"	106 sq. ft	Yes
5	Primary Bedroom	13'11" x 11'1"	155 sq. ft	Yes
6	W.i.c.	3'9" x 5'8"	21 sq. ft	Yes
7	Bath	5'11" x 10'10"	58 sq. ft	Yes
8	Patio	5'7" x 6'4"	36 sq. ft	No
9	Dining Area	13'1" x 11'1"	102 sq. ft	Yes
10	Kitchen	19'2" x 11'1"	212 sq. ft	Yes
11	Bedroom	10'11" x 10'11"	119 sq. ft	Yes

**100 Turtle Lane, Ranson, Jefferson County, West Virginia, United States, 25438**

#	Room name	Dimensions	Area (sqft)	Counted as Living Area
12	Porch	21'2" x 13'7"	286 sq. ft	No
13	W.i.c.	3'9" x 4'11"	18 sq. ft	Yes

# 100 Turtle Lane, Ranson, Jefferson County, West Virginia, United States, 25438

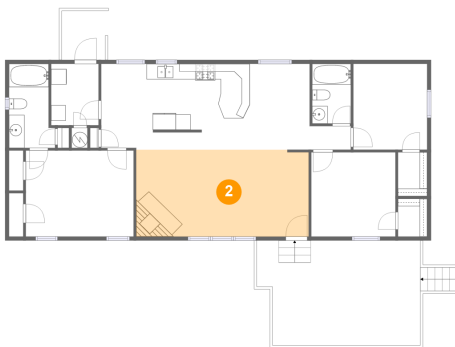
## 1 Floor 1 - Laundry



Dimensions: 6'2" x 7'11"  
Area: 49 sq. ft  
Counted as Living Area:  
Yes

Heated: Yes  
Finished: Yes  
Enclosed: Yes  
Contiguous:  
Yes  
Permitted: Yes  
Wet Space: No  
Addition: No  
Conversion: No

## 2 Floor 1 - Living Room

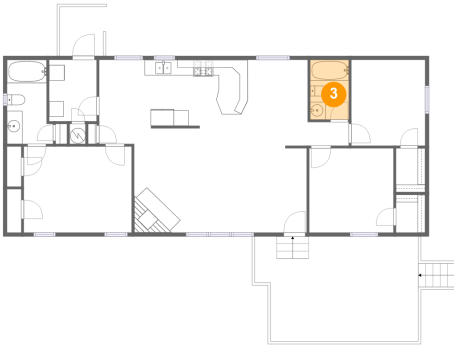


Dimensions: 22'4" x 11'3"  
Area: 249 sq. ft  
Counted as Living Area:  
Yes

Heated: Yes  
Finished: Yes  
Enclosed: Yes  
Contiguous:  
Yes  
Permitted: Yes  
Wet Space: No  
Addition: No  
Conversion: No

# 100 Turtle Lane, Ranson, Jefferson County, West Virginia, United States, 25438

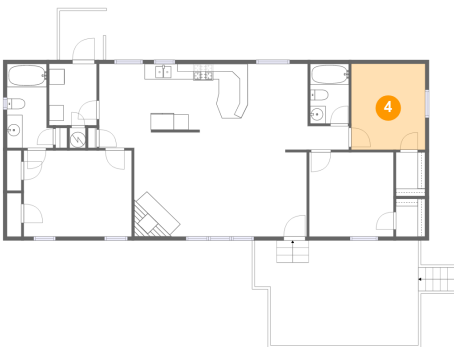
## 3 Floor 1 - Bath



Dimensions: 5'0" x 7'9"  
Area: 38 sq. ft  
Counted as Living Area:  
Yes

Heated: Yes  
Finished: Yes  
Enclosed: Yes  
Contiguous:  
Yes  
Permitted: Yes  
Wet Space: Yes  
Addition: No  
Conversion: No

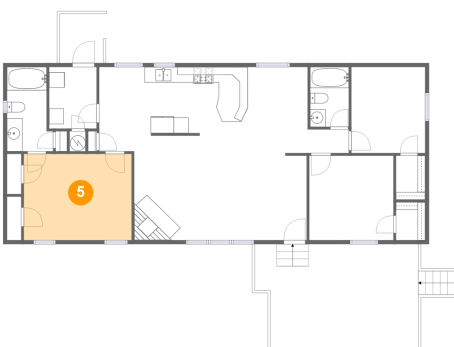
## 4 Floor 1 - Bedroom



Dimensions: 9'7" x 11'1"  
Area: 106 sq. ft  
Counted as Living Area:  
Yes

Heated: Yes  
Finished: Yes  
Enclosed: Yes  
Contiguous:  
Yes  
Permitted: Yes  
Wet Space: No  
Addition: No  
Conversion: No

## 5 Floor 1 - Primary Bedroom



Dimensions: 13'11" x 11'1"  
Area: 155 sq. ft  
Counted as Living Area:  
Yes

Heated: Yes  
Finished: Yes  
Enclosed: Yes  
Contiguous:  
Yes  
Permitted: Yes  
Wet Space: No  
Addition: No  
Conversion: No

# 100 Turtle Lane, Ranson, Jefferson County, West Virginia, United States, 25438

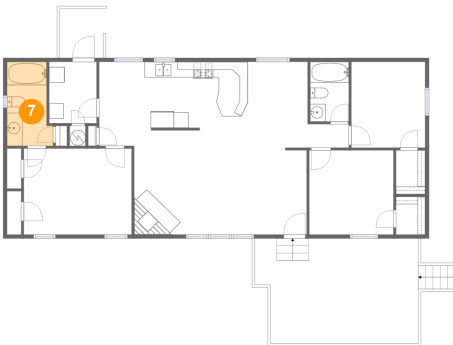
## 6 Floor 1 - W.i.c.



Dimensions: 3'9" x 5'8"  
Area: 21 sq. ft  
Counted as Living Area:  
Yes

Heated: Yes  
Finished: Yes  
Enclosed: Yes  
Contiguous:  
Yes  
Permitted: Yes  
Wet Space: No  
Addition: No  
Conversion: No

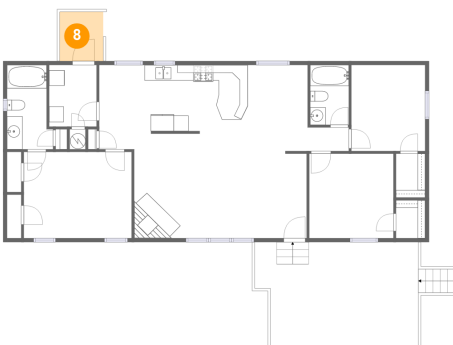
## 7 Floor 1 - Bath



Dimensions: 5'11" x 10'10"  
Area: 58 sq. ft  
Counted as Living Area:  
Yes

Heated: Yes  
Finished: Yes  
Enclosed: Yes  
Contiguous:  
Yes  
Permitted: Yes  
Wet Space: Yes  
Addition: No  
Conversion: No

## 8 Floor 1 - Patio

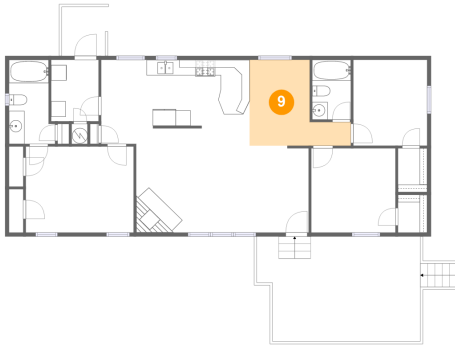


Dimensions: 5'7" x 6'4"  
Area: 36 sq. ft  
Counted as Living Area: No

Heated: No  
Finished: Yes  
Enclosed: No  
Contiguous: Yes  
Permitted: Yes  
Wet Space: No  
Addition: No  
Conversion: No

# 100 Turtle Lane, Ranson, Jefferson County, West Virginia, United States, 25438

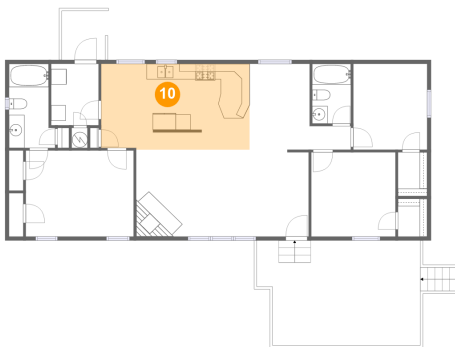
## 9 Floor 1 - Dining Area



Dimensions: 13'1" x 11'1"  
Area: 102 sq. ft  
Counted as Living Area:  
Yes

Heated: Yes  
Finished: Yes  
Enclosed: Yes  
Contiguous:  
Yes  
Permitted: Yes  
Wet Space: No  
Addition: No  
Conversion: No

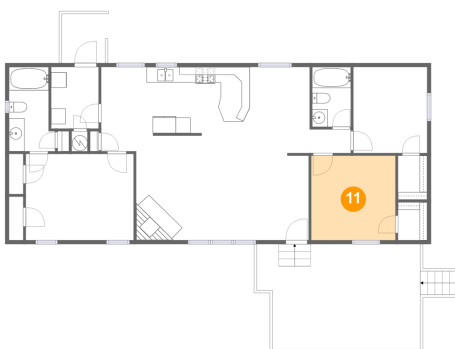
## 10 Floor 1 - Kitchen



Dimensions: 19'2" x 11'1"  
Area: 212 sq. ft  
Counted as Living Area:  
Yes

Heated: Yes  
Finished: Yes  
Enclosed: Yes  
Contiguous:  
Yes  
Permitted: Yes  
Wet Space: No  
Addition: No  
Conversion: No

## 11 Floor 1 - Bedroom

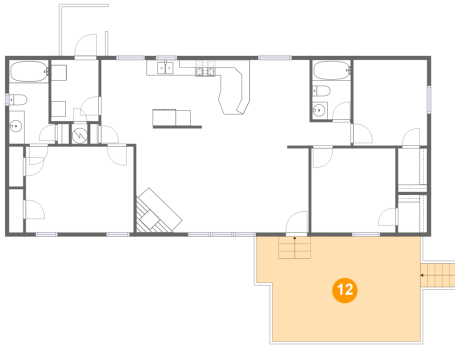


Dimensions: 10'11" x 10'11"  
Area: 119 sq. ft  
Counted as Living Area:  
Yes

Heated: Yes  
Finished: Yes  
Enclosed: Yes  
Contiguous:  
Yes  
Permitted: Yes  
Wet Space: No  
Addition: No  
Conversion: No

# 100 Turtle Lane, Ranson, Jefferson County, West Virginia, United States, 25438

## 12 Floor 1 - Porch



Dimensions: 21'2" x 13'7"  
Area: 286 sq. ft  
Counted as Living Area: No

Heated: No  
Finished: Yes  
Enclosed: No  
Contiguous: Yes  
Permitted: Yes  
Wet Space: No  
Addition: No  
Conversion: No

## 13 Floor 1 - W.i.c.



Dimensions: 3'9" x 4'11"  
Area: 18 sq. ft  
Counted as Living Area:  
Yes

Heated: Yes  
Finished: Yes  
Enclosed: Yes  
Contiguous:  
Yes  
Permitted: Yes  
Wet Space: No  
Addition: No  
Conversion: No