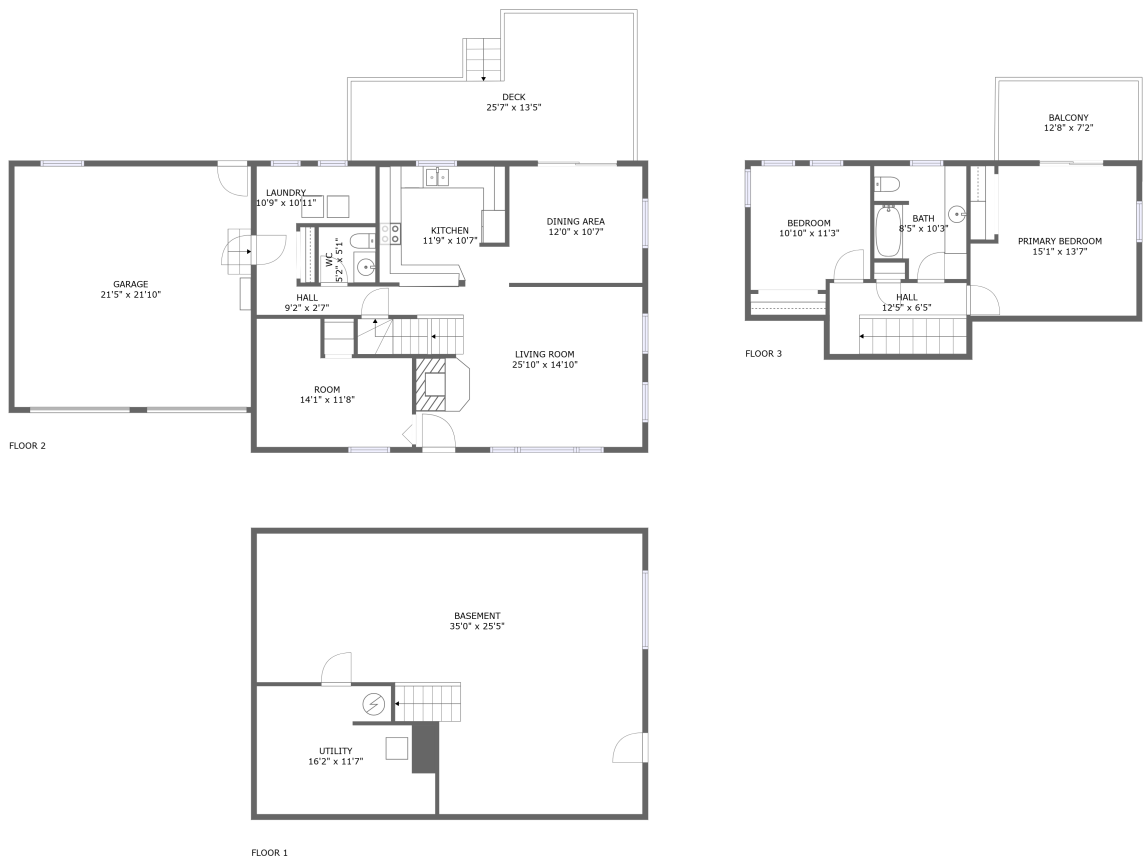


Home report

68 Heath Street, Newton, Rockingham County, New Hampshire,  
United States, 03858



**Total Area: 1408 sq. ft**  
Below Ground: 0 sq. ft, Floor 2: 890 sq. ft, Floor 3: 518 sq. ft  
Excluded: Basement 716 sq. ft, Utility 174 sq. ft, Deck 269 sq. ft, Garage 468 sq. ft, Balcony 91 sq. ft, Walls: 210 sq. ft

Property summary

 **3** Floors

 **2** Bedrooms

 **1** Bathrooms

Home report

**68 Heath Street, Newton, Rockingham County, New Hampshire,  
United States, 03858**



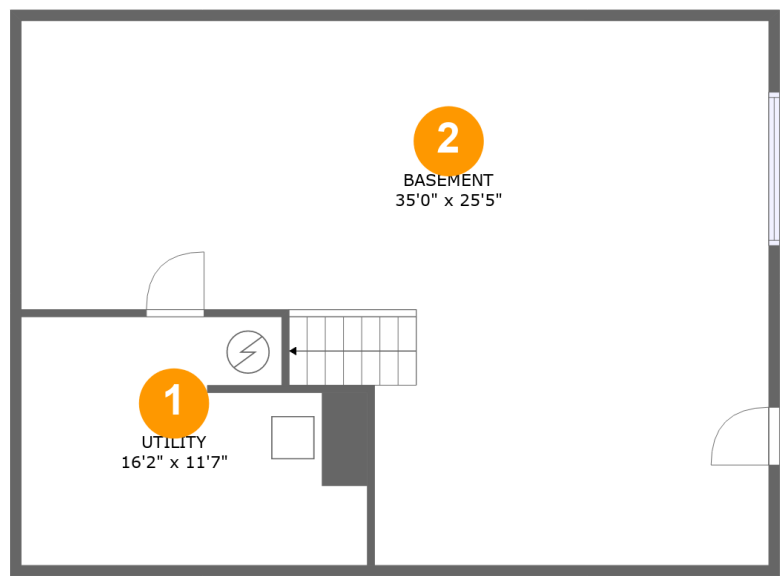
**1**  
Half baths



**1**  
Garages

Home report

68 Heath Street, Newton, Rockingham County, New Hampshire,  
United States, 03858



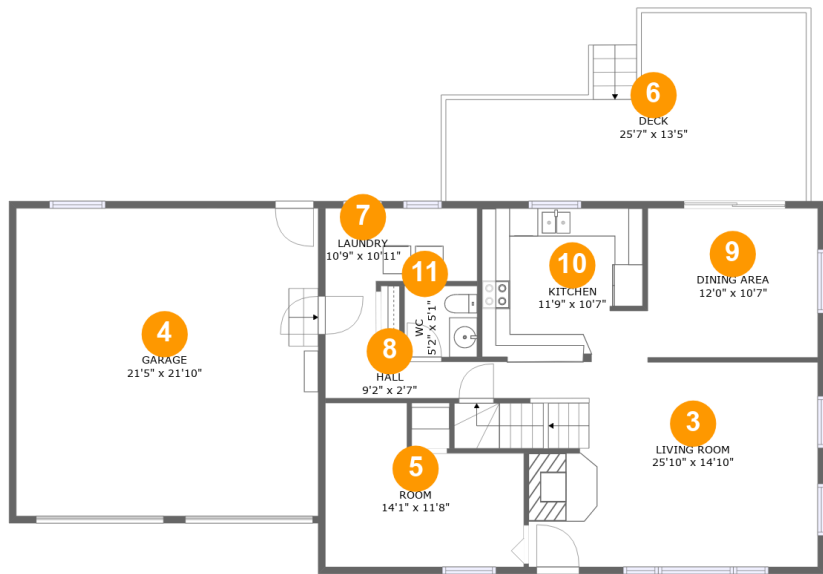
Room dimensions

Floor 1 Below ground Total:0sqft Excluded: 890sqft

#		Max Dimensions	sqft	Included
1	Utility	16'2" x 11'7"	173 sq. ft	No
2	Basement	35'0" x 25'5"	707 sq. ft	No

Home report

68 Heath Street, Newton, Rockingham County, New Hampshire,  
United States, 03858



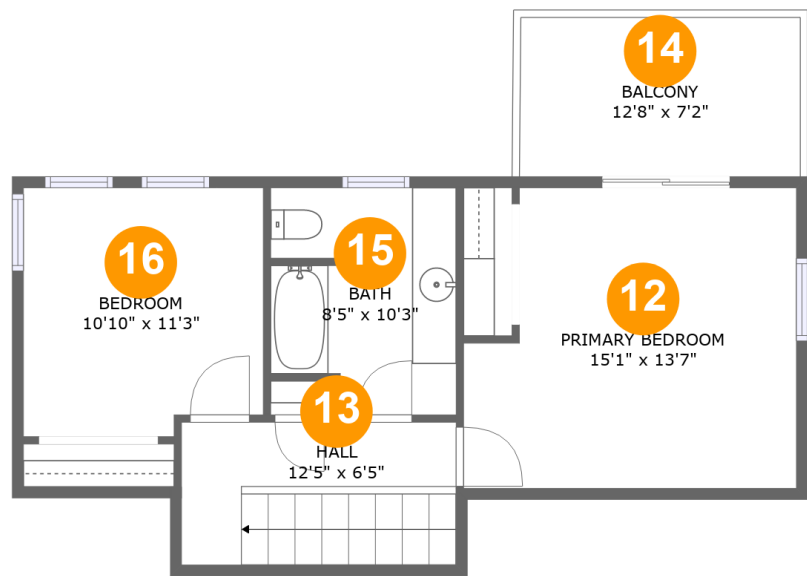
Room dimensions

Floor 2 Total:890sqft    Excluded: 737sqft

#		Max Dimensions	sqft	Included
3	Living Room	25'10" x 14'10"	331 sq. ft	Yes
4	Garage	21'5" x 21'10"	468 sq. ft	No
5	Room	14'1" x 11'8"	135 sq. ft	Yes
6	Deck	25'7" x 13'5"	269 sq. ft	No
7	Laundry	10'9" x 10'11"	77 sq. ft	Yes
8	Hall	9'2" x 2'7"	24 sq. ft	Yes
9	Dining Area	12'0" x 10'7"	128 sq. ft	Yes
10	Kitchen	11'9" x 10'7"	121 sq. ft	Yes
11	WC	5'2" x 5'1"	26 sq. ft	Yes

Home report

68 Heath Street, Newton, Rockingham County, New Hampshire,  
United States, 03858

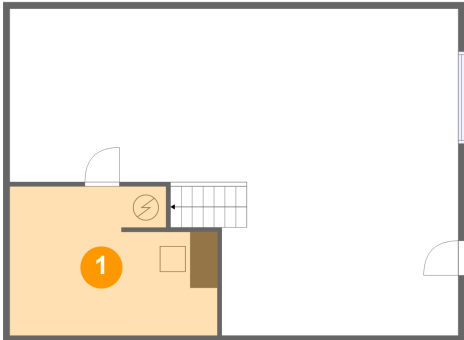


Room dimensions

Floor 3 Total:518sqft    Excluded: 91sqft

#		Max Dimensions	sqft	Included
12	Primary Bedroom	15'1" x 13'7"	187 sq. ft	Yes
13	Hall	12'5" x 6'5"	80 sq. ft	Yes
14	Balcony	12'8" x 7'2"	91 sq. ft	No
15	Bath	8'5" x 10'3"	79 sq. ft	Yes
16	Bedroom	10'10" x 11'3"	118 sq. ft	Yes

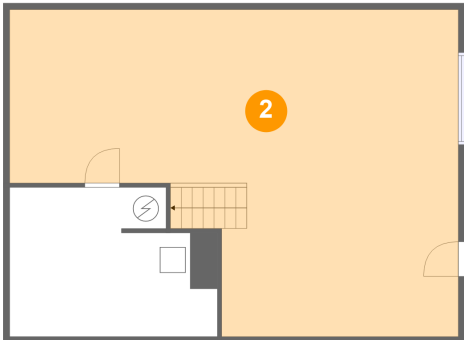
1 Floor 1 - Utility



Max Dimensions: 16'2" x 11'7"  
Calculated Area: 173 sq. ft  
Included: No

Heated: Yes  
Finished: No  
Enclosed: Yes  
Contiguous: Yes  
Permitted: Yes  
Wet space: No  
Addition: No  
Conversion: No

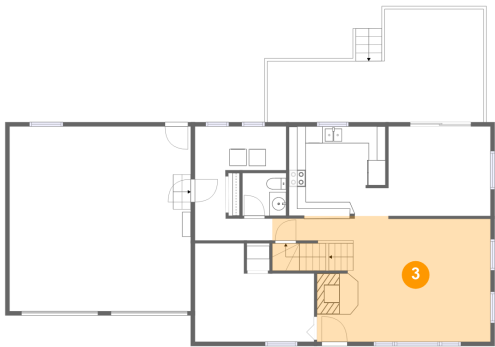
2 Floor 1 - Basement



Max Dimensions: 35'0" x 25'5"  
Calculated Area: 707 sq. ft  
Included: No

Heated: Yes  
Finished: No  
Enclosed: Yes  
Contiguous: Yes  
Permitted: Yes  
Wet space: No  
Addition: No  
Conversion: No

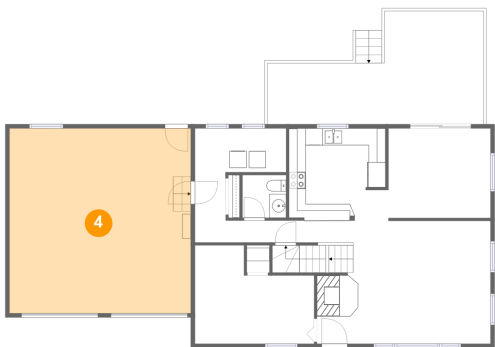
3 Floor 2 - Living Room



Max Dimensions: 25'10" x 14'10"  
Calculated Area: 331 sq. ft  
Included: Yes

Heated: Yes  
Finished: Yes  
Enclosed: Yes  
Contiguous: Yes  
Permitted: Yes  
Wet space: No  
Addition: No  
Conversion: No

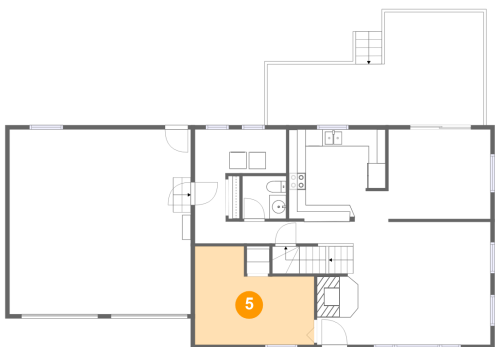
4 Floor 2 - Garage



Max Dimensions: 21'5" x 21'10"  
Calculated Area: 468 sq. ft  
Included: No

Heated: No  
Finished: No  
Enclosed: Yes  
Contiguous: Yes  
Permitted: Yes  
Wet space: No  
Addition: No  
Conversion: No

5 Floor 2 - Room

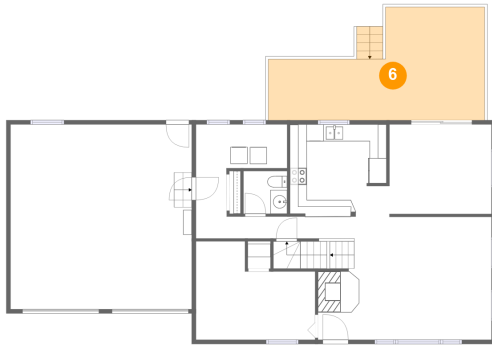


Max Dimensions: 14'1" x 11'8"  
Calculated Area: 135 sq. ft  
Included: Yes

Heated: Yes  
Finished: Yes  
Enclosed: Yes  
Contiguous: Yes  
Permitted: Yes  
Wet space: No  
Addition: No  
Conversion: No

68 Heath Street, Newton, Rockingham County, New Hampshire,  
United States, 03858

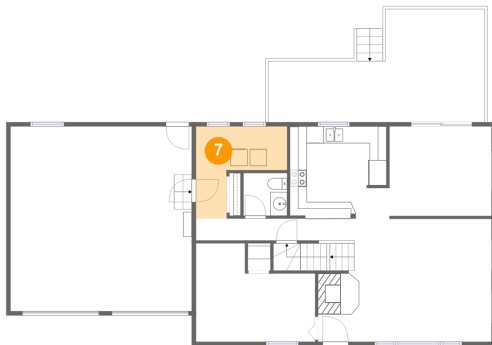
## 6 Floor 2 - Deck



Max Dimensions: 25'7" x 13'5"  
Calculated Area: 269 sq. ft  
Included: No

Heated: No  
Finished: Yes  
Enclosed: No  
Contiguous: Yes  
Permitted: Yes  
Wet space: No  
Addition: No  
Conversion: No

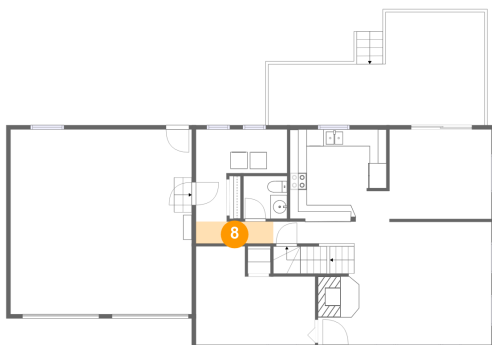
## 7 Floor 2 - Laundry



Max Dimensions: 10'9" x 10'11"  
Calculated Area: 77 sq. ft  
Included: Yes

Heated: Yes  
Finished: Yes  
Enclosed: Yes  
Contiguous: Yes  
Permitted: Yes  
Wet space: No  
Addition: No  
Conversion: No

## 8 Floor 2 - Hall



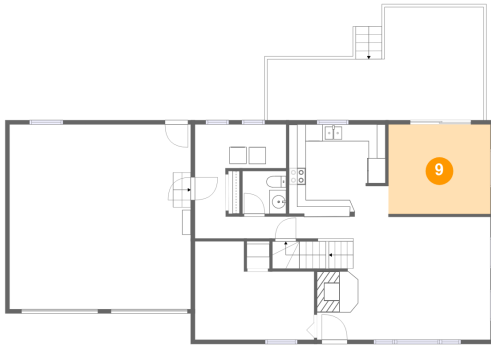
Max Dimensions: 9'2" x 2'7"  
Calculated Area: 24 sq. ft  
Included: Yes

Heated: Yes  
Finished: Yes  
Enclosed: Yes  
Contiguous: Yes  
Permitted: Yes  
Wet space: No  
Addition: No  
Conversion: No



68 Heath Street, Newton, Rockingham County, New Hampshire,  
United States, 03858

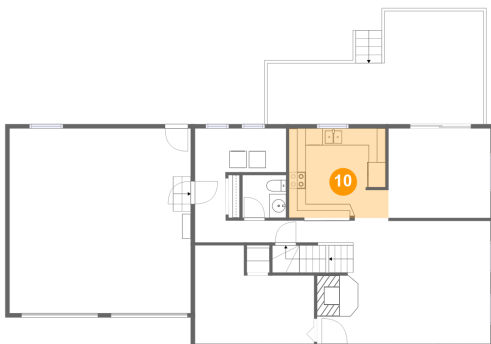
## 9 Floor 2 - Dining Area



Max Dimensions: 12'0" x 10'7"  
Calculated Area: 128 sq. ft  
Included: Yes

Heated: Yes  
Finished: Yes  
Enclosed: Yes  
Contiguous: Yes  
Permitted: Yes  
Wet space: No  
Addition: No  
Conversion: No

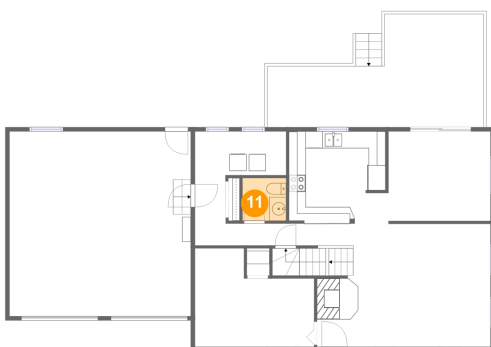
## 10 Floor 2 - Kitchen



Max Dimensions: 11'9" x 10'7"  
Calculated Area: 121 sq. ft  
Included: Yes

Heated: Yes  
Finished: Yes  
Enclosed: Yes  
Contiguous: Yes  
Permitted: Yes  
Wet space: No  
Addition: No  
Conversion: No

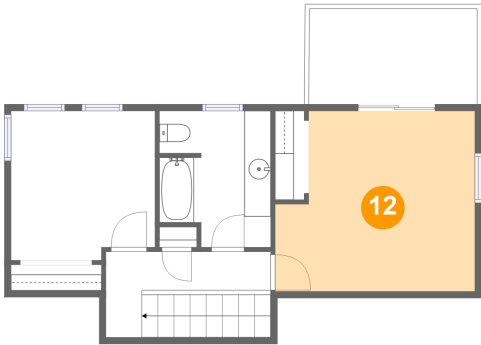
## 11 Floor 2 - WC



Max Dimensions: 5'2" x 5'1"  
Calculated Area: 26 sq. ft  
Included: Yes

Heated: Yes  
Finished: Yes  
Enclosed: Yes  
Contiguous: Yes  
Permitted: Yes  
Wet space: Yes  
Addition: No  
Conversion: No

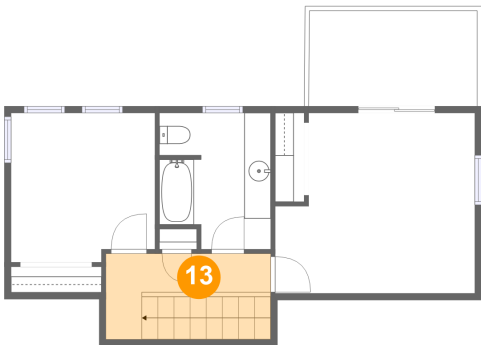
12 Floor 3 - Primary Bedroom



Max Dimensions: 15'1" x 13'7"  
Calculated Area: 187 sq. ft  
Included: Yes

Heated: Yes  
Finished: Yes  
Enclosed: Yes  
Contiguous: Yes  
Permitted: Yes  
Wet space: No  
Addition: No  
Conversion: No

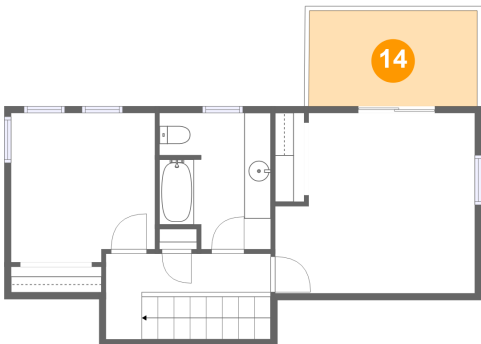
13 Floor 3 - Hall



Max Dimensions: 12'5" x 6'5"  
Calculated Area: 80 sq. ft  
Included: Yes

Heated: Yes  
Finished: Yes  
Enclosed: Yes  
Contiguous: Yes  
Permitted: Yes  
Wet space: No  
Addition: No  
Conversion: No

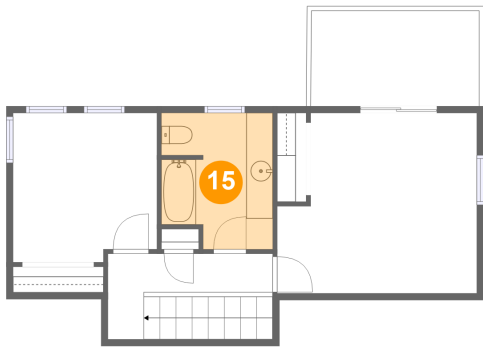
14 Floor 3 - Balcony



Max Dimensions: 12'8" x 7'2"  
Calculated Area: 91 sq. ft  
Included: No

Heated: No  
Finished: Yes  
Enclosed: No  
Contiguous: Yes  
Permitted: Yes  
Wet space: No  
Addition: No  
Conversion: No

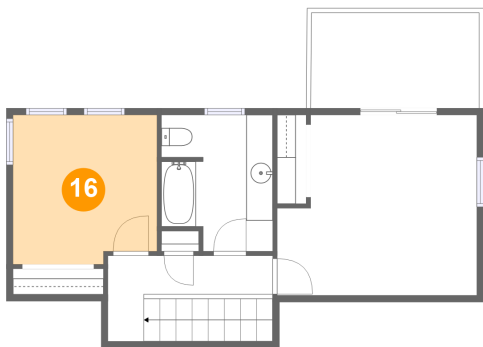
15 Floor 3 - Bath



Max Dimensions: 8'5" x 10'3"  
Calculated Area: 79 sq. ft  
Included: Yes

Heated: Yes  
Finished: Yes  
Enclosed: Yes  
Contiguous: Yes  
Permitted: Yes  
Wet space: Yes  
Addition: No  
Conversion: No

16 Floor 3 - Bedroom



Max Dimensions: 10'10" x 11'3"  
Calculated Area: 118 sq. ft  
Included: Yes

Heated: Yes  
Finished: Yes  
Enclosed: Yes  
Contiguous: Yes  
Permitted: Yes  
Wet space: No  
Addition: No  
Conversion: No