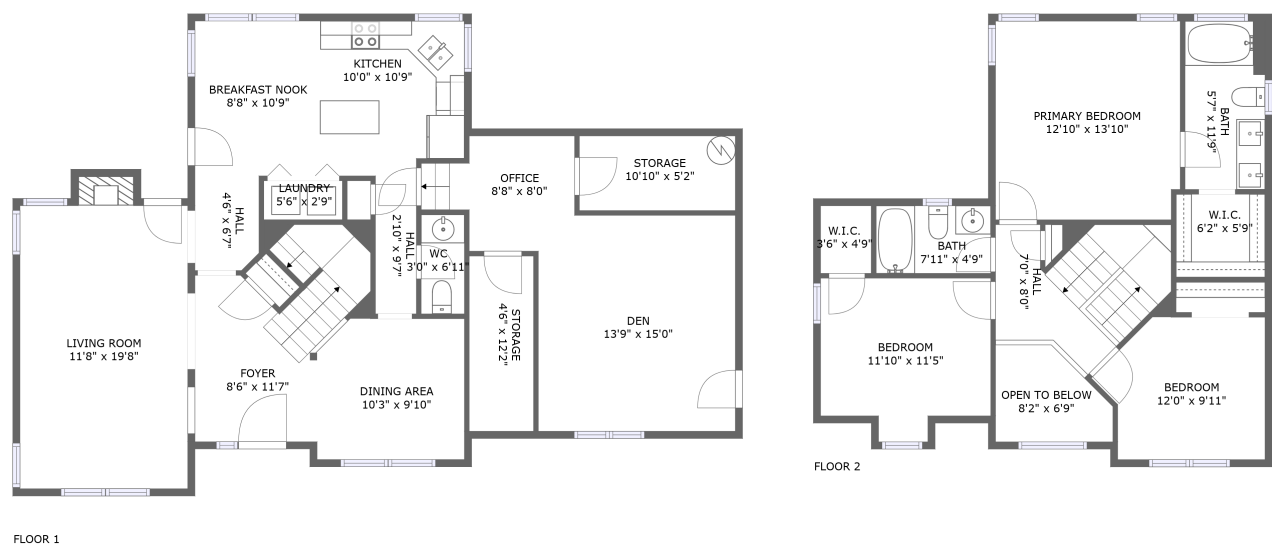


Home report

2704 Regents Park Lane, Lake Jeanette, Greensboro, Guilford County, North Carolina, United States, 27455




Total Area: 1782 sq. ft

Floor 1: 1080 sq. ft, Floor 2: 702 sq. ft

Excluded: Storage 111 sq. ft, Fireplace 10 sq. ft, Open to below 46 sq. ft, Walls: 146 sq. ft

Property summary

 **2** Floors

 **3** Bedrooms

 **2** Bathrooms

 **1** Half baths

Home report

2704 Regents Park Lane, Lake Jeanette, Greensboro, Guilford County, North Carolina, United States, 27455



Room dimensions

Floor 1 Total:1080sqft Excluded: 121sqft

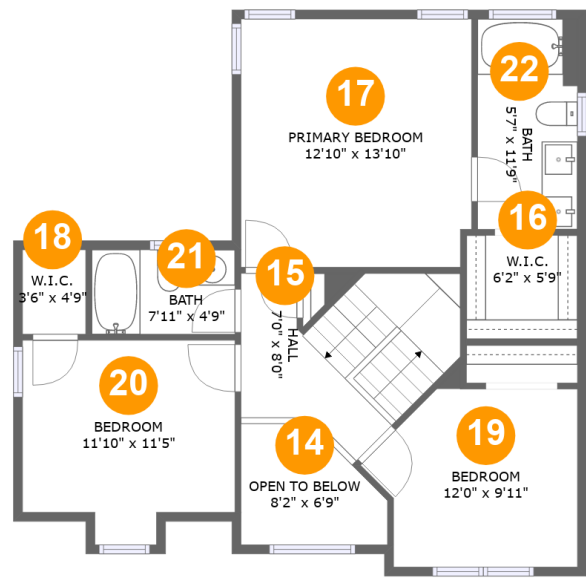
#		Max Dimensions	sqft	Included
1	Dining Area	10'3" x 9'10"	99 sq. ft	Yes
2	Living Room	11'8" x 19'8"	238 sq. ft	Yes
3	Kitchen	10'0" x 10'9"	104 sq. ft	Yes
4	Office	8'8" x 8'0"	67 sq. ft	Yes
5	Storage	4'6" x 12'2"	55 sq. ft	No
6	WC	3'0" x 6'11"	21 sq. ft	Yes
7	Hall	2'10" x 9'7"	27 sq. ft	Yes
8	Den	13'9" x 15'0"	203 sq. ft	Yes
9	Breakfast Nook	8'8" x 10'9"	94 sq. ft	Yes
10	Hall	4'6" x 6'7"	29 sq. ft	Yes
11	Foyer	8'6" x 11'7"	125 sq. ft	Yes

Home report

2704 Regents Park Lane, Lake Jeanette, Greensboro, Guilford
County, North Carolina, United States, 27455

#		Max Dimensions	sqft	Included
12	Storage	10'10" x 5'2"	56 sq. ft	No
13	Laundry	5'6" x 2'9"	15 sq. ft	Yes

2704 Regents Park Lane, Lake Jeanette, Greensboro, Guilford County, North Carolina, United States, 27455



Room dimensions

Floor 2 Total:702sqft Excluded: 46sqft

#		Max Dimensions	sqft	Included
14	Open To Below	8'2" x 6'9"	46 sq. ft	No
15	Hall	7'0" x 8'0"	94 sq. ft	Yes
16	W.I.C.	6'2" x 5'9"	36 sq. ft	Yes
17	Primary Bedroom	12'10" x 13'10"	177 sq. ft	Yes
18	W.I.C.	3'6" x 4'9"	17 sq. ft	Yes
19	Bedroom	12'0" x 9'11"	103 sq. ft	Yes
20	Bedroom	11'10" x 11'5"	120 sq. ft	Yes
21	Bath	7'11" x 4'9"	38 sq. ft	Yes
22	Bath	5'7" x 11'9"	65 sq. ft	Yes

2704 Regents Park Lane, Lake Jeanette, Greensboro, Guilford
County, North Carolina, United States, 27455

1 Floor 1 - Dining Area



Max Dimensions: 10'3" x 9'10"
Calculated Area: 99 sq. ft
Included: Yes

Heated: Yes
Finished: Yes
Enclosed: Yes
Contiguous: Yes
Permitted: Yes
Wet space: No
Addition: No
Conversion: No

2 Floor 1 - Living Room

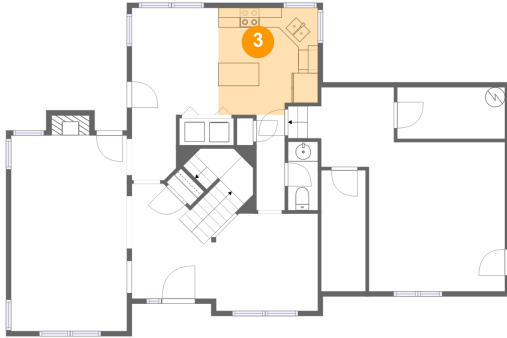


Max Dimensions: 11'8" x 19'8"
Calculated Area: 238 sq. ft
Included: Yes

Heated: Yes
Finished: Yes
Enclosed: Yes
Contiguous: Yes
Permitted: Yes
Wet space: No
Addition: No
Conversion: No

2704 Regents Park Lane, Lake Jeanette, Greensboro, Guilford County, North Carolina, United States, 27455

3 Floor 1 - Kitchen



Max Dimensions: 10'0" x 10'9"
Calculated Area: 104 sq. ft
Included: Yes

Heated: Yes
Finished: Yes
Enclosed: Yes
Contiguous: Yes
Permitted: Yes
Wet space: No
Addition: No
Conversion: No

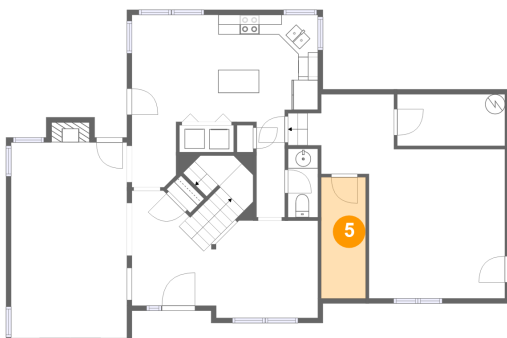
4 Floor 1 - Office



Max Dimensions: 8'8" x 8'0"
Calculated Area: 67 sq. ft
Included: Yes

Heated: Yes
Finished: Yes
Enclosed: Yes
Contiguous: Yes
Permitted: Yes
Wet space: No
Addition: No
Conversion: No

5 Floor 1 - Storage

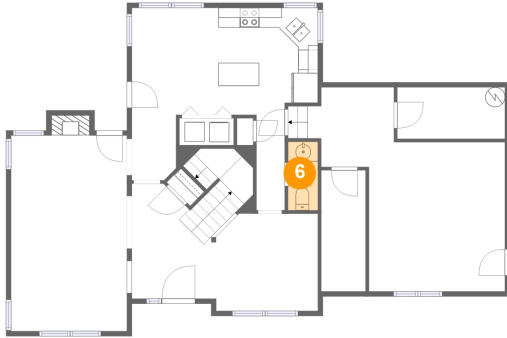


Max Dimensions: 4'6" x 12'2"
Calculated Area: 55 sq. ft
Included: No

Heated: No
Finished: No
Enclosed: No
Contiguous: No
Permitted: Yes
Wet space: No
Addition: No
Conversion: No

2704 Regents Park Lane, Lake Jeanette, Greensboro, Guilford County, North Carolina, United States, 27455

6 Floor 1 - WC



Max Dimensions: 3'0" x 6'11"
Calculated Area: 21 sq. ft
Included: Yes

Heated: Yes
Finished: Yes
Enclosed: Yes
Contiguous: Yes
Permitted: Yes
Wet space: Yes
Addition: No
Conversion: No

7 Floor 1 - Hall



Max Dimensions: 2'10" x 9'7"
Calculated Area: 27 sq. ft
Included: Yes

Heated: Yes
Finished: Yes
Enclosed: Yes
Contiguous: Yes
Permitted: Yes
Wet space: No
Addition: No
Conversion: No

8 Floor 1 - Den



Max Dimensions: 13'9" x 15'0"
Calculated Area: 203 sq. ft
Included: Yes

Heated: Yes
Finished: Yes
Enclosed: Yes
Contiguous: Yes
Permitted: Yes
Wet space: No
Addition: No
Conversion: No

2704 Regents Park Lane, Lake Jeanette, Greensboro, Guilford County, North Carolina, United States, 27455

9 Floor 1 - Breakfast Nook



Max Dimensions: 8'8" x 10'9"
Calculated Area: 94 sq. ft
Included: Yes

Heated: Yes
Finished: Yes
Enclosed: Yes
Contiguous: Yes
Permitted: Yes
Wet space: No
Addition: No
Conversion: No

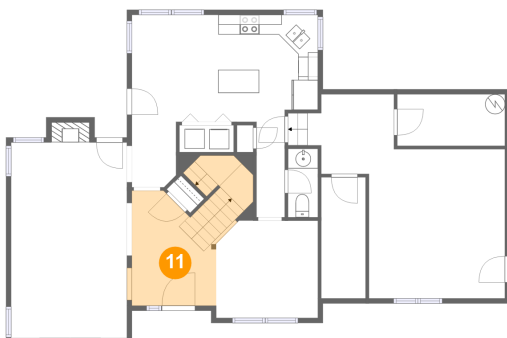
10 Floor 1 - Hall



Max Dimensions: 4'6" x 6'7"
Calculated Area: 29 sq. ft
Included: Yes

Heated: Yes
Finished: Yes
Enclosed: Yes
Contiguous: Yes
Permitted: Yes
Wet space: No
Addition: No
Conversion: No

11 Floor 1 - Foyer



Max Dimensions: 8'6" x 11'7"
Calculated Area: 125 sq. ft
Included: Yes

Heated: Yes
Finished: Yes
Enclosed: Yes
Contiguous: Yes
Permitted: Yes
Wet space: No
Addition: No
Conversion: No

Home report

2704 Regents Park Lane, Lake Jeanette, Greensboro, Guilford County, North Carolina, United States, 27455

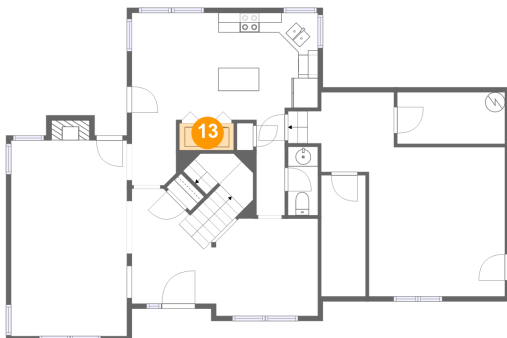
12 Floor 1 - Storage



Max Dimensions: 10'10" x 5'2"
Calculated Area: 56 sq. ft
Included: No

Heated: No
Finished: No
Enclosed: No
Contiguous: No
Permitted: Yes
Wet space: No
Addition: No
Conversion: No

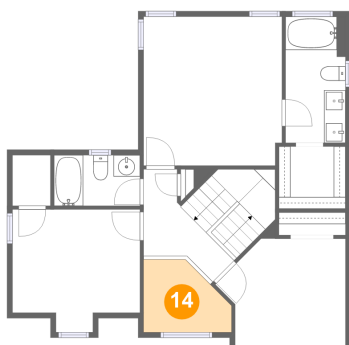
13 Floor 1 - Laundry



Max Dimensions: 5'6" x 2'9"
Calculated Area: 15 sq. ft
Included: Yes

Heated: Yes
Finished: Yes
Enclosed: Yes
Contiguous: Yes
Permitted: Yes
Wet space: No
Addition: No
Conversion: No

14 Floor 2 - Open To Below

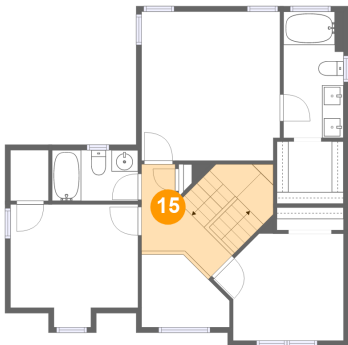


Max Dimensions: 8'2" x 6'9"
Calculated Area: 46 sq. ft
Included: No

Heated: No
Finished: No
Enclosed: No
Contiguous: Yes
Permitted: No
Wet space: No
Addition: No
Conversion: No

2704 Regents Park Lane, Lake Jeanette, Greensboro, Guilford County, North Carolina, United States, 27455

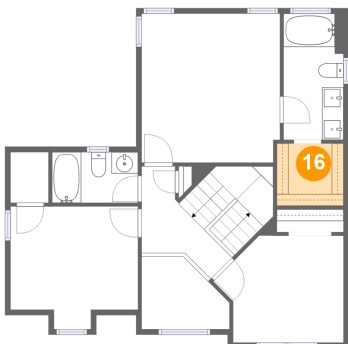
15 Floor 2 - Hall



Max Dimensions: 7'0" x 8'0"
Calculated Area: 94 sq. ft
Included: Yes

Heated: Yes
Finished: Yes
Enclosed: Yes
Contiguous: Yes
Permitted: Yes
Wet space: No
Addition: No
Conversion: No

16 Floor 2 - W.I.C.



Max Dimensions: 6'2" x 5'9"
Calculated Area: 36 sq. ft
Included: Yes

Heated: Yes
Finished: Yes
Enclosed: Yes
Contiguous: Yes
Permitted: Yes
Wet space: No
Addition: No
Conversion: No

17 Floor 2 - Primary Bedroom

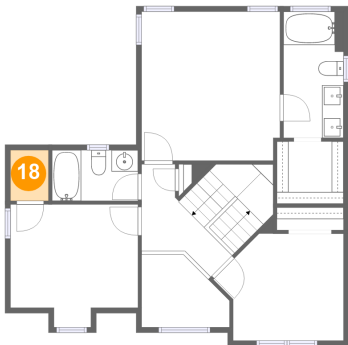


Max Dimensions: 12'10" x 13'10"
Calculated Area: 177 sq. ft
Included: Yes

Heated: Yes
Finished: Yes
Enclosed: Yes
Contiguous: Yes
Permitted: Yes
Wet space: No
Addition: No
Conversion: No

2704 Regents Park Lane, Lake Jeanette, Greensboro, Guilford County, North Carolina, United States, 27455

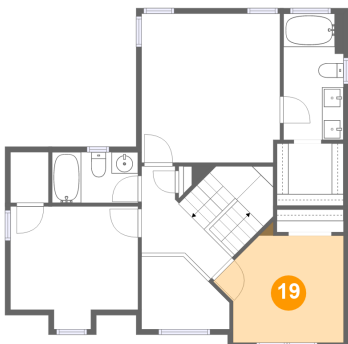
18 Floor 2 - W.I.C.



Max Dimensions: 3'6" x 4'9"
Calculated Area: 17 sq. ft
Included: Yes

Heated: Yes
Finished: Yes
Enclosed: Yes
Contiguous: Yes
Permitted: Yes
Wet space: No
Addition: No
Conversion: No

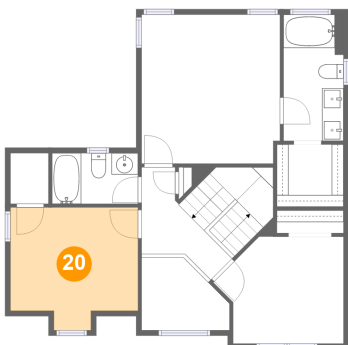
19 Floor 2 - Bedroom



Max Dimensions: 12'0" x 9'11"
Calculated Area: 103 sq. ft
Included: Yes

Heated: Yes
Finished: Yes
Enclosed: Yes
Contiguous: Yes
Permitted: Yes
Wet space: No
Addition: No
Conversion: No

20 Floor 2 - Bedroom

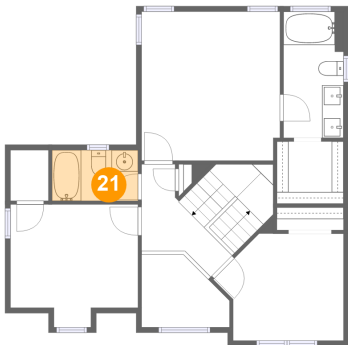


Max Dimensions: 11'10" x 11'5"
Calculated Area: 120 sq. ft
Included: Yes

Heated: Yes
Finished: Yes
Enclosed: Yes
Contiguous: Yes
Permitted: Yes
Wet space: No
Addition: No
Conversion: No

2704 Regents Park Lane, Lake Jeanette, Greensboro, Guilford County, North Carolina, United States, 27455

21 Floor 2 - Bath



Max Dimensions: 7'11" x 4'9"
Calculated Area: 38 sq. ft
Included: Yes

Heated: Yes
Finished: Yes
Enclosed: Yes
Contiguous: Yes
Permitted: Yes
Wet space: Yes
Addition: No
Conversion: No

22 Floor 2 - Bath



Max Dimensions: 5'7" x 11'9"
Calculated Area: 65 sq. ft
Included: Yes

Heated: Yes
Finished: Yes
Enclosed: Yes
Contiguous: Yes
Permitted: Yes
Wet space: Yes
Addition: No
Conversion: No