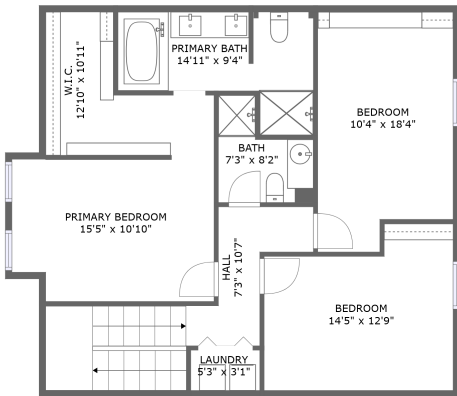
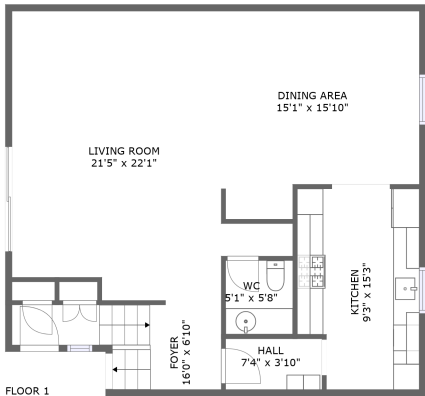


Home report

810 Sierra Madre Villa Avenue, Hastings Ranch, Pasadena, Los Angeles County, California, United States, 91107



FLOOR 2



FLOOR 1

Property summary



0 Garages



3 Bedrooms



2 Bathrooms



1 Half baths



2 Floors



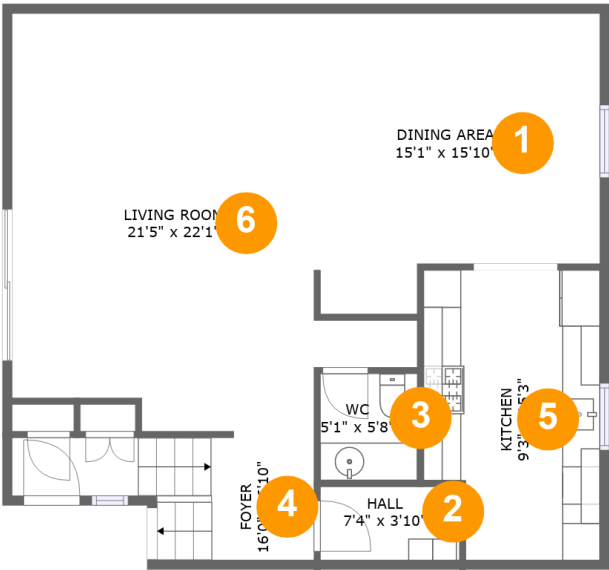
1,887 Gross living area sqft



1,887 Total sqft

Home report

810 Sierra Madre Villa Avenue, Hastings Ranch, Pasadena, Los Angeles County, California, United States, 91107



Room dimensions

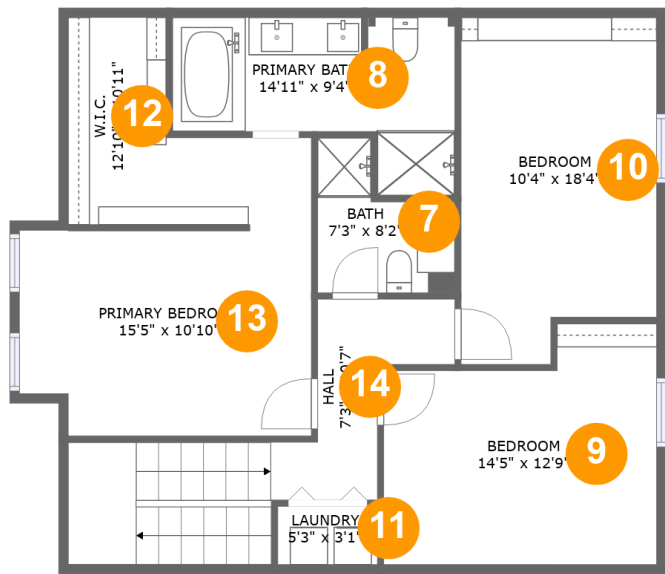
Floor 1

Total sqft: 919    Living area: 919

#		Max Dimensions	sqft	Included
1	Dining Area	15'1" x 15'10"	214 sq. ft	Yes
2	Hall	7'4" x 3'10"	29 sq. ft	Yes
3	WC	5'1" x 5'8"	29 sq. ft	Yes
4	Foyer	16'0" x 6'10"	79 sq. ft	Yes
5	Kitchen	9'3" x 15'3"	134 sq. ft	Yes
6	Living Room	21'5" x 22'1"	354 sq. ft	Yes

Home report

810 Sierra Madre Villa Avenue, Hastings Ranch, Pasadena, Los Angeles County, California, United States, 91107

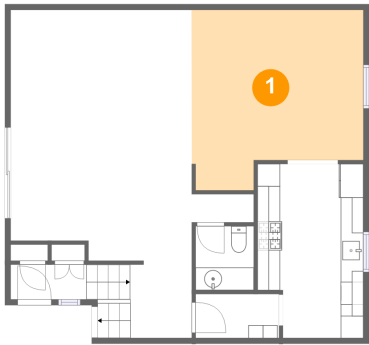


Room dimensions

Floor 2 Total sqft: 968    Living area: 968

#		Max Dimensions	sqft	Included
7	Bath	7'3" x 8'2"	44 sq. ft	Yes
8	Primary Bath	14'11" x 9'4"	102 sq. ft	Yes
9	Bedroom	14'5" x 12'9"	161 sq. ft	Yes
10	Bedroom	10'4" x 18'4"	175 sq. ft	Yes
11	Laundry	5'3" x 3'1"	16 sq. ft	Yes
12	W.I.C.	12'10" x 10'11"	93 sq. ft	Yes
13	Primary Bedroom	15'5" x 10'10"	161 sq. ft	Yes
14	Hall	7'3" x 10'7"	124 sq. ft	Yes

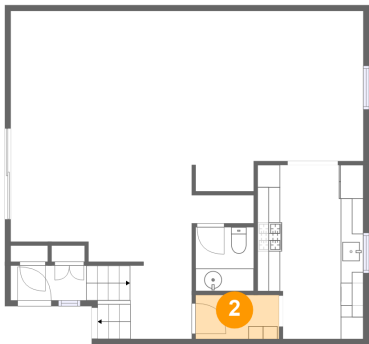
1 Floor 1 - Dining Area



Max Dimensions: 15'1" x 15'10"  
Calculated Area: 214 sq. ft  
Included: Yes

Heated: Yes  
Finished: Yes  
Enclosed: Yes  
Contiguous: Yes  
Permitted: Yes  
Wet space: No  
Addition: No  
Conversion: No

2 Floor 1 - Hall

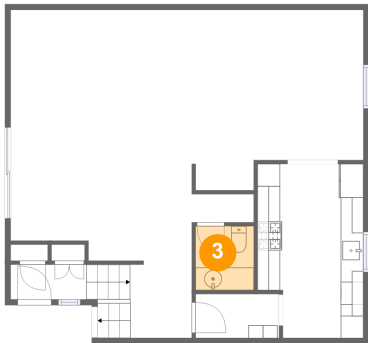


Max Dimensions: 7'4" x 3'10"  
Calculated Area: 29 sq. ft  
Included: Yes

Heated: Yes  
Finished: Yes  
Enclosed: Yes  
Contiguous: Yes  
Permitted: Yes  
Wet space: No  
Addition: No  
Conversion: No

810 Sierra Madre Villa Avenue, Hastings Ranch, Pasadena, Los Angeles County, California, United States, 91107

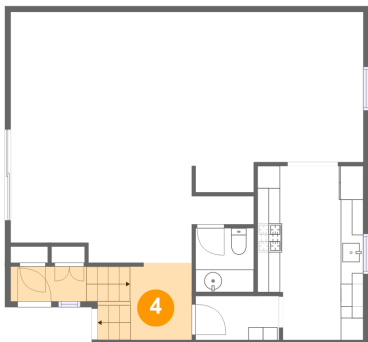
3 Floor 1 - WC



Max Dimensions: 5'1" x 5'8"  
Calculated Area: 29 sq. ft  
Included: Yes

Heated: Yes  
Finished: Yes  
Enclosed: Yes  
Contiguous: Yes  
Permitted: Yes  
Wet space: Yes  
Addition: No  
Conversion: No

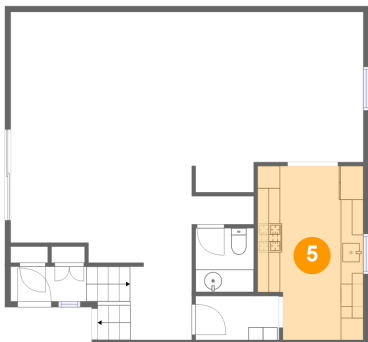
4 Floor 1 - Foyer



Max Dimensions: 16'0" x 6'10"  
Calculated Area: 79 sq. ft  
Included: Yes

Heated: Yes  
Finished: Yes  
Enclosed: Yes  
Contiguous: Yes  
Permitted: Yes  
Wet space: No  
Addition: No  
Conversion: No

5 Floor 1 - Kitchen



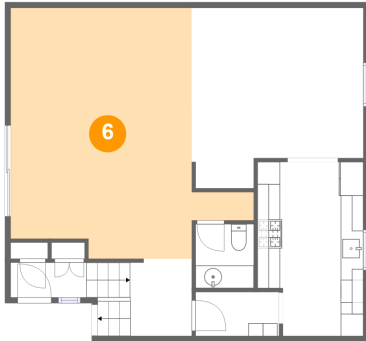
Max Dimensions: 9'3" x 15'3"  
Calculated Area: 134 sq. ft  
Included: Yes

Heated: Yes  
Finished: Yes  
Enclosed: Yes  
Contiguous: Yes  
Permitted: Yes  
Wet space: No  
Addition: No  
Conversion: No

## Home report

810 Sierra Madre Villa Avenue, Hastings Ranch, Pasadena, Los Angeles County, California, United States, 91107

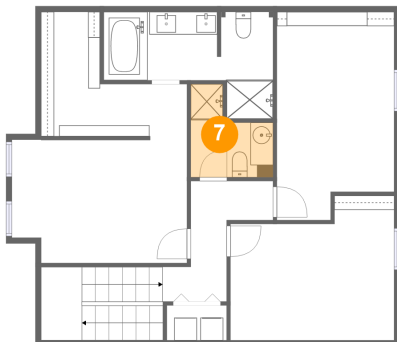
### 6 Floor 1 - Living Room



Max Dimensions: 21'5" x 22'1"  
Calculated Area: 354 sq. ft  
Included: Yes

Heated: Yes  
Finished: Yes  
Enclosed: Yes  
Contiguous: Yes  
Permitted: Yes  
Wet space: No  
Addition: No  
Conversion: No

### 7 Floor 2 - Bath



Max Dimensions: 7'3" x 8'2"  
Calculated Area: 44 sq. ft  
Included: Yes

Heated: Yes  
Finished: Yes  
Enclosed: Yes  
Contiguous: Yes  
Permitted: Yes  
Wet space: Yes  
Addition: No  
Conversion: No

### 8 Floor 2 - Primary Bath



Max Dimensions: 14'11" x 9'4"  
Calculated Area: 102 sq. ft  
Included: Yes

Heated: Yes  
Finished: Yes  
Enclosed: Yes  
Contiguous: Yes  
Permitted: Yes  
Wet space: Yes  
Addition: No  
Conversion: No

810 Sierra Madre Villa Avenue, Hastings Ranch, Pasadena, Los Angeles County, California, United States, 91107

## 9 Floor 2 - Bedroom



Max Dimensions: 14'5" x 12'9"  
Calculated Area: 161 sq. ft  
Included: Yes

Heated: Yes  
Finished: Yes  
Enclosed: Yes  
Contiguous: Yes  
Permitted: Yes  
Wet space: No  
Addition: No  
Conversion: No

## 10 Floor 2 - Bedroom



Max Dimensions: 10'4" x 18'4"  
Calculated Area: 175 sq. ft  
Included: Yes

Heated: Yes  
Finished: Yes  
Enclosed: Yes  
Contiguous: Yes  
Permitted: Yes  
Wet space: No  
Addition: No  
Conversion: No

## 11 Floor 2 - Laundry

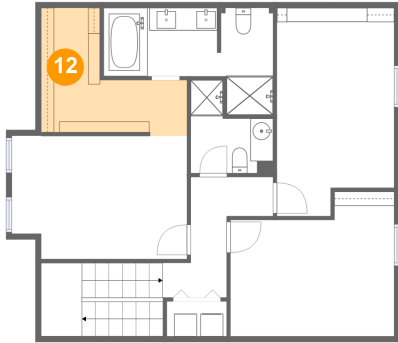


Max Dimensions: 5'3" x 3'1"  
Calculated Area: 16 sq. ft  
Included: Yes

Heated: Yes  
Finished: Yes  
Enclosed: Yes  
Contiguous: Yes  
Permitted: Yes  
Wet space: No  
Addition: No  
Conversion: No

810 Sierra Madre Villa Avenue, Hastings Ranch, Pasadena, Los Angeles County, California, United States, 91107

## 12 Floor 2 - W.I.C.



Max Dimensions: 12'10" x 10'11"  
Calculated Area: 93 sq. ft  
Included: Yes

Heated: Yes  
Finished: Yes  
Enclosed: Yes  
Contiguous: Yes  
Permitted: Yes  
Wet space: No  
Addition: No  
Conversion: No

## 13 Floor 2 - Primary Bedroom



Max Dimensions: 15'5" x 10'10"  
Calculated Area: 161 sq. ft  
Included: Yes

Heated: Yes  
Finished: Yes  
Enclosed: Yes  
Contiguous: Yes  
Permitted: Yes  
Wet space: No  
Addition: No  
Conversion: No

## 14 Floor 2 - Hall



Max Dimensions: 7'3" x 10'7"  
Calculated Area: 124 sq. ft  
Included: Yes

Heated: Yes  
Finished: Yes  
Enclosed: Yes  
Contiguous: Yes  
Permitted: Yes  
Wet space: No  
Addition: No  
Conversion: No