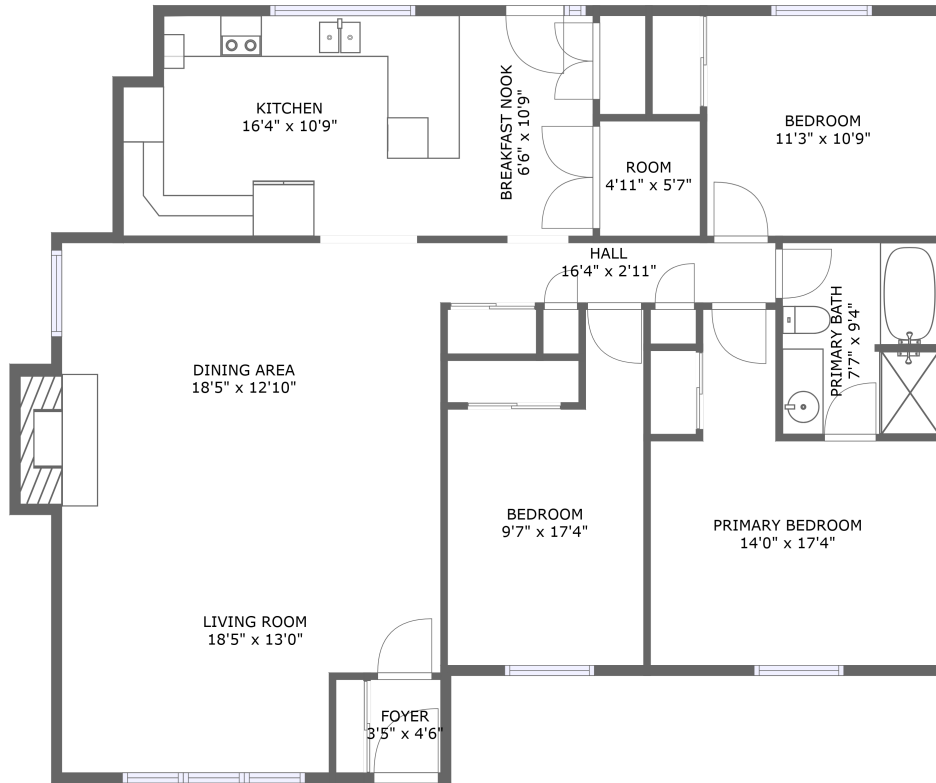



1819 Rosebella Avenue, Hunt Club Upper - Blossom Park- Timbermill, Gloucester, Ontario, Canada, K1T



FLOOR 1

Property summary

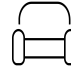
 **0** Garages

 **3** Bedrooms

 **1** Bathrooms

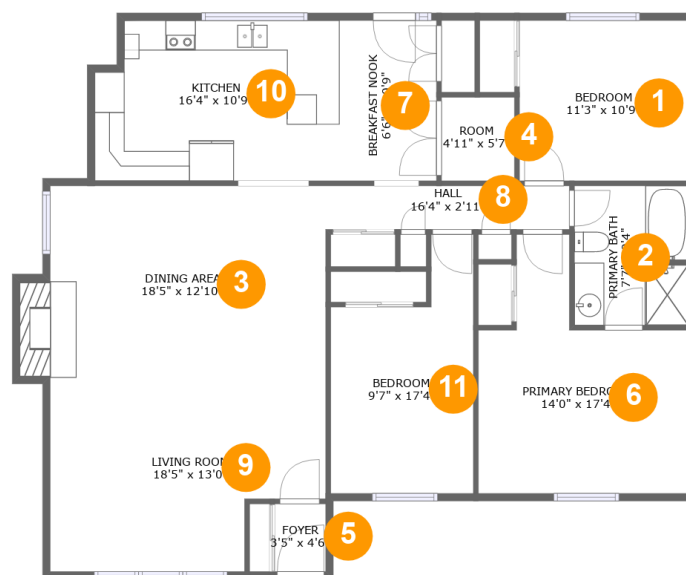
 **0** Half baths

 **1** Floors

 **1,487** Gross living area sqft

 **1,502** Total sqft

1819 Rosebella Avenue, Hunt Club Upper - Blossom Park- Timbermill, Gloucester, Ontario, Canada, K1T



Room dimensions

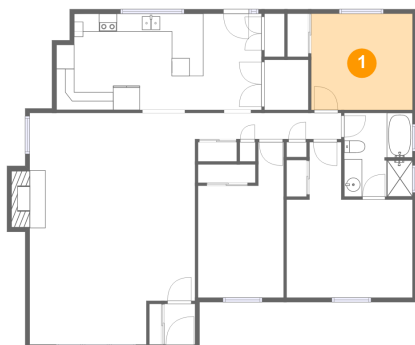
Floor 1

Total sqft: 1502 Living area: 1487

#		Dimensions	sqft	Counted as living area
1	Bedroom	11'3" x 10'9"	121 sq. ft	Yes
2	Primary Bath	7'7" x 9'4"	70 sq. ft	Yes
3	Dining Area	18'5" x 12'10"	249 sq. ft	Yes
4	Room	4'11" x 5'7"	27 sq. ft	Yes
5	Foyer	3'5" x 4'6"	15 sq. ft	Yes
6	Primary Bedroom	14'0" x 17'4"	176 sq. ft	Yes
7	Breakfast Nook	6'6" x 10'9"	70 sq. ft	Yes
8	Hall	16'4" x 2'11"	48 sq. ft	Yes
9	Living Room	18'5" x 13'0"	213 sq. ft	Yes
10	Kitchen	16'4" x 10'9"	169 sq. ft	Yes
11	Bedroom	9'7" x 17'4"	133 sq. ft	Yes

1819 Rosebella Avenue, Hunt Club Upper - Blossom Park- Timbermill, Gloucester, Ontario, Canada, K1T

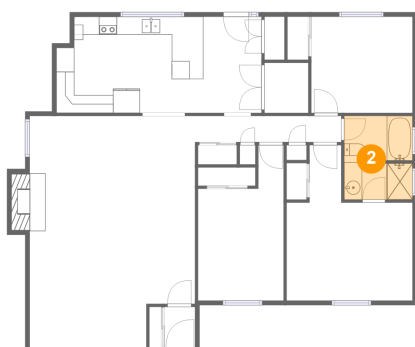
1 Floor 1 - Bedroom



Dimensions: 11'3" x 10'9"
Area: 121 sq. ft
Counted as living area: Yes

Heated: Yes
Finished: Yes
Enclosed: Yes
Contiguous: Yes
Permitted: Yes
Wet space: No
Addition: No
Conversion: No

2 Floor 1 - Primary Bath

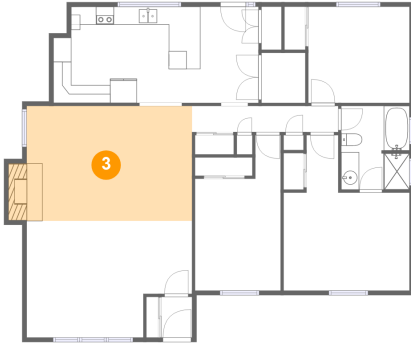


Dimensions: 7'7" x 9'4"
Area: 70 sq. ft
Counted as living area: Yes

Heated: Yes
Finished: Yes
Enclosed: Yes
Contiguous: Yes
Permitted: Yes
Wet space: Yes
Addition: No
Conversion: No

1819 Rosebella Avenue, Hunt Club Upper - Blossom Park- Timbermill, Gloucester, Ontario, Canada, K1T

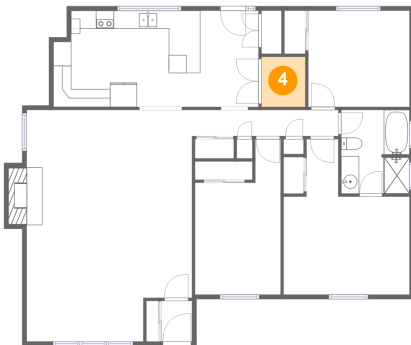
3 Floor 1 - Dining Area



Dimensions: 18'5" x 12'10"
Area: 249 sq. ft
Counted as living area: Yes

Heated: Yes
Finished: Yes
Enclosed: Yes
Contiguous: Yes
Permitted: Yes
Wet space: No
Addition: No
Conversion: No

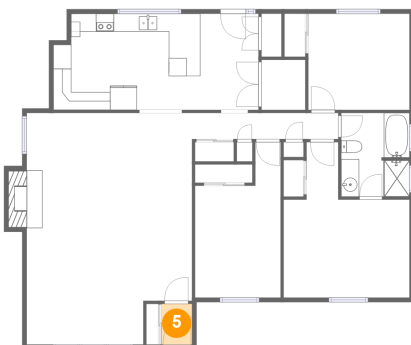
4 Floor 1 - Room



Dimensions: 4'11" x 5'7"
Area: 27 sq. ft
Counted as living area: Yes

Heated: Yes
Finished: Yes
Enclosed: Yes
Contiguous: Yes
Permitted: Yes
Wet space: No
Addition: No
Conversion: No

5 Floor 1 - Foyer

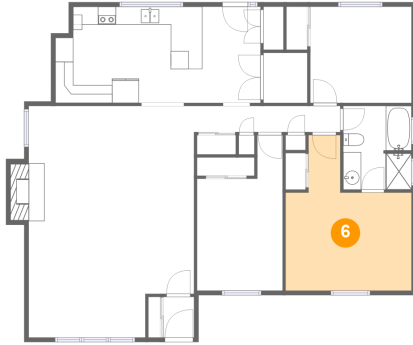


Dimensions: 3'5" x 4'6"
Area: 15 sq. ft
Counted as living area: Yes

Heated: Yes
Finished: Yes
Enclosed: Yes
Contiguous: Yes
Permitted: Yes
Wet space: No
Addition: No
Conversion: No

1819 Rosebella Avenue, Hunt Club Upper - Blossom Park- Timbermill, Gloucester, Ontario, Canada, K1T

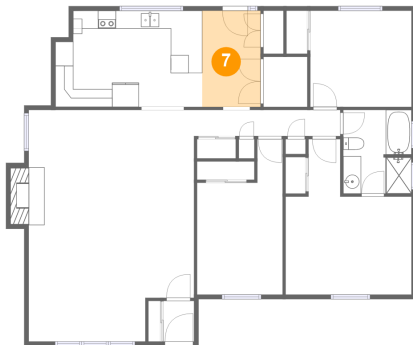
6 Floor 1 - Primary Bedroom



Dimensions: 14'0" x 17'4"
Area: 176 sq. ft
Counted as living area: Yes

Heated: Yes
Finished: Yes
Enclosed: Yes
Contiguous: Yes
Permitted: Yes
Wet space: No
Addition: No
Conversion: No

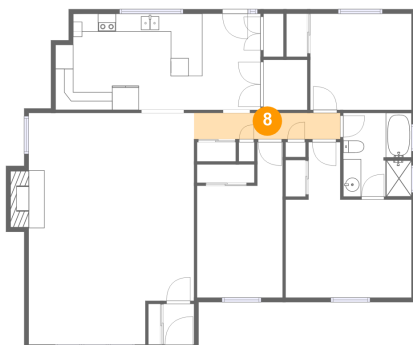
7 Floor 1 - Breakfast Nook



Dimensions: 6'6" x 10'9"
Area: 70 sq. ft
Counted as living area: Yes

Heated: Yes
Finished: Yes
Enclosed: Yes
Contiguous: Yes
Permitted: Yes
Wet space: No
Addition: No
Conversion: No

8 Floor 1 - Hall

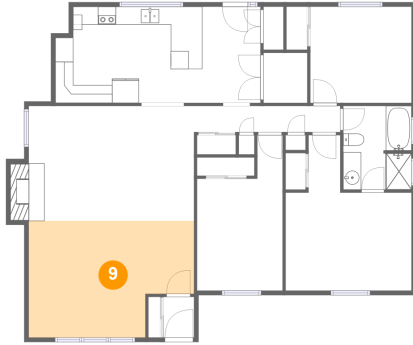


Dimensions: 16'4" x 2'11"
Area: 48 sq. ft
Counted as living area: Yes

Heated: Yes
Finished: Yes
Enclosed: Yes
Contiguous: Yes
Permitted: Yes
Wet space: No
Addition: No
Conversion: No

1819 Rosebella Avenue, Hunt Club Upper - Blossom Park- Timbermill, Gloucester, Ontario, Canada, K1T

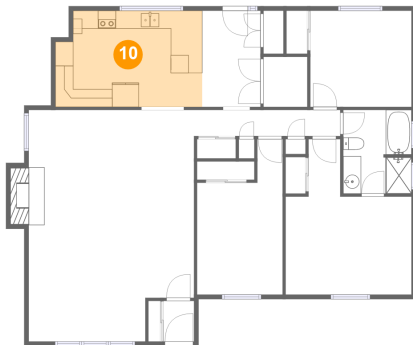
9 Floor 1 - Living Room



Dimensions: 18'5" x 13'0"
Area: 213 sq. ft
Counted as living area: Yes

Heated: Yes
Finished: Yes
Enclosed: Yes
Contiguous: Yes
Permitted: Yes
Wet space: No
Addition: No
Conversion: No

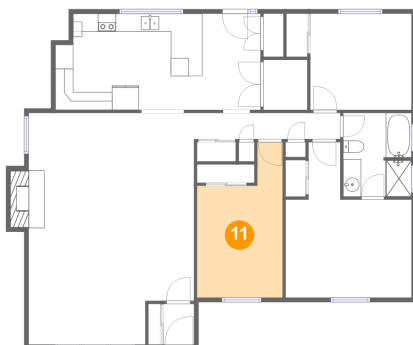
10 Floor 1 - Kitchen



Dimensions: 16'4" x 10'9"
Area: 169 sq. ft
Counted as living area: Yes

Heated: Yes
Finished: Yes
Enclosed: Yes
Contiguous: Yes
Permitted: Yes
Wet space: No
Addition: No
Conversion: No

11 Floor 1 - Bedroom



Dimensions: 9'7" x 17'4"
Area: 133 sq. ft
Counted as living area: Yes

Heated: Yes
Finished: Yes
Enclosed: Yes
Contiguous: Yes
Permitted: Yes
Wet space: No
Addition: No
Conversion: No