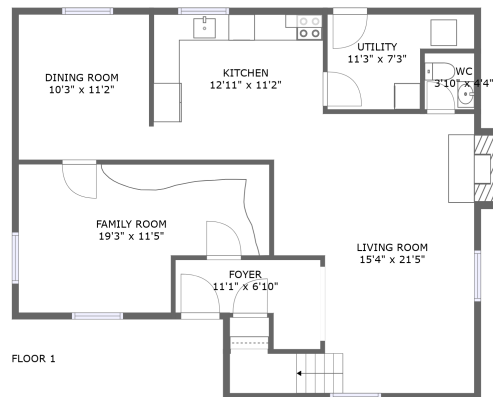
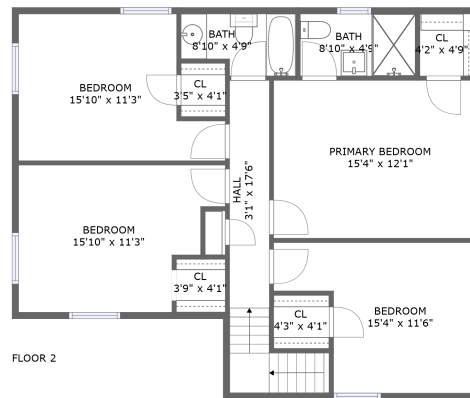



# 9418 Ashking Dr, Mechanicsville, VA, US



## Property summary

 **0** Garages

 **4** Bedrooms

 **2** Bathrooms

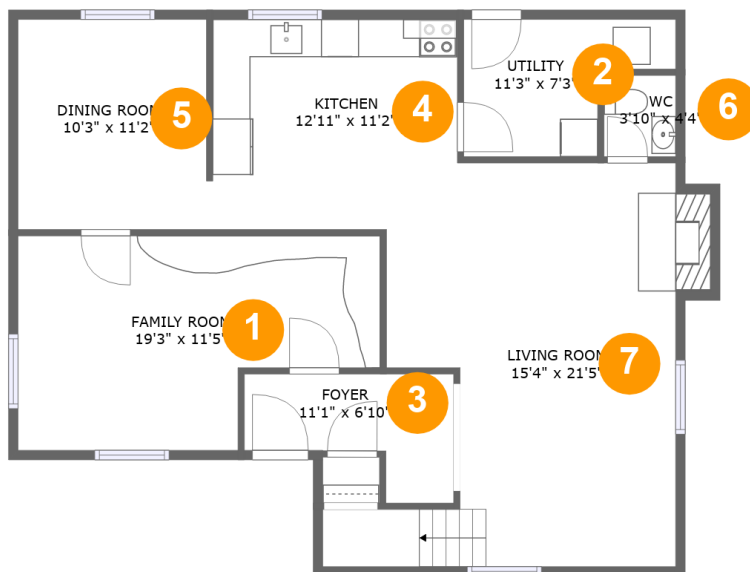
 **1** Half baths

 **2** Floors

 **1,915** Gross living area sqft

 **1,968** Total sqft

# 9418 Ashking Dr, Mechanicsville, VA, US

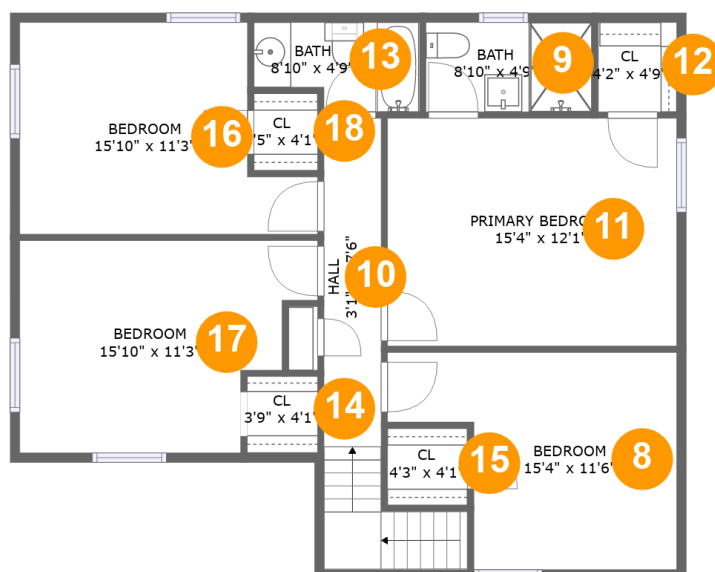


## Room dimensions

Floor 1

Total sqft: 989 Living area: 941

#		Dimensions	sqft	Counted as living area
1	Family Room	19'3" x 11'5"	186 sq. ft	Yes
2	Utility	11'3" x 7'3"	63 sq. ft	Yes
3	Foyer	11'1" x 6'10"	55 sq. ft	Yes
4	Kitchen	12'11" x 11'2"	145 sq. ft	Yes
5	Dining Room	10'3" x 11'2"	112 sq. ft	Yes
6	WC	3'10" x 4'4"	16 sq. ft	Yes
7	Living Room	15'4" x 21'5"	284 sq. ft	Yes

**9418 Ashking Dr, Mechanicsville, VA, US****Room dimensions**

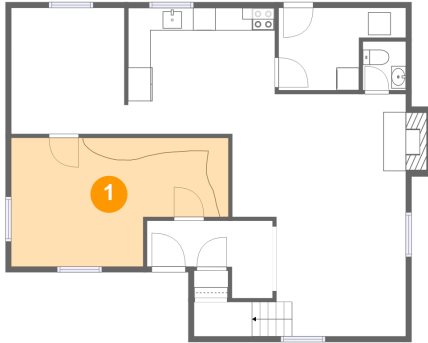
Floor 2

Total sqft: 979 Living area: 974

#		Dimensions	sqft	Counted as living area
8	Bedroom	15'4" x 11'6"	141 sq. ft	Yes
9	Bath	8'10" x 4'9"	42 sq. ft	Yes
10	Hall	3'1" x 17'6"	87 sq. ft	Yes
11	Primary Bedroom	15'4" x 12'1"	186 sq. ft	Yes
12	Cl	4'2" x 4'9"	20 sq. ft	Yes
13	Bath	8'10" x 4'9"	37 sq. ft	Yes
14	Cl	3'9" x 4'1"	15 sq. ft	Yes
15	Cl	4'3" x 4'1"	17 sq. ft	Yes
16	Bedroom	15'10" x 11'3"	148 sq. ft	Yes
17	Bedroom	15'10" x 11'3"	154 sq. ft	Yes
18	Cl	3'5" x 4'1"	14 sq. ft	Yes

# 9418 Ashking Dr, Mechanicsville, VA, US

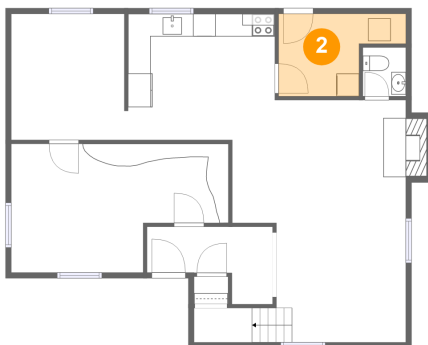
## 1 Floor 1 - Family Room



**Dimensions:** 19'3" x 11'5"  
**Area:** 186 sq. ft  
**Counted as living area:** Yes

**Heated:** Yes  
**Finished:** Yes  
**Enclosed:** Yes  
**Contiguous:** Yes  
**Permitted:** Yes  
**Wet space:** No  
**Addition:** No  
**Conversion:** No

## 2 Floor 1 - Utility

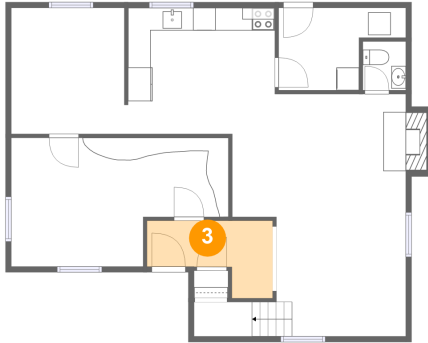


**Dimensions:** 11'3" x 7'3"  
**Area:** 63 sq. ft  
**Counted as living area:** Yes

**Heated:** Yes  
**Finished:** Yes  
**Enclosed:** Yes  
**Contiguous:** Yes  
**Permitted:** Yes  
**Wet space:** No  
**Addition:** No  
**Conversion:** No

# 9418 Ashking Dr, Mechanicsville, VA, US

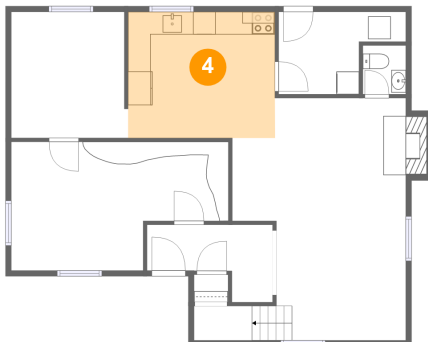
## 3 Floor 1 - Foyer



Dimensions: 11'1" x 6'10"  
Area: 55 sq. ft  
Counted as living area: Yes

Heated: Yes  
Finished: Yes  
Enclosed: Yes  
Contiguous: Yes  
Permitted: Yes  
Wet space: No  
Addition: No  
Conversion: No

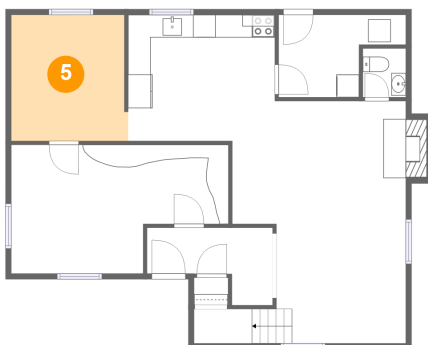
## 4 Floor 1 - Kitchen



Dimensions: 12'11" x 11'2"  
Area: 145 sq. ft  
Counted as living area: Yes

Heated: Yes  
Finished: Yes  
Enclosed: Yes  
Contiguous: Yes  
Permitted: Yes  
Wet space: No  
Addition: No  
Conversion: No

## 5 Floor 1 - Dining Room

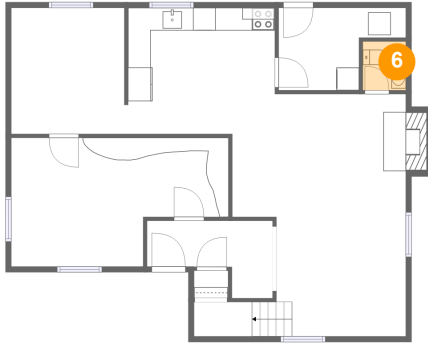


Dimensions: 10'3" x 11'2"  
Area: 112 sq. ft  
Counted as living area: Yes

Heated: Yes  
Finished: Yes  
Enclosed: Yes  
Contiguous: Yes  
Permitted: Yes  
Wet space: No  
Addition: No  
Conversion: No

# 9418 Ashking Dr, Mechanicsville, VA, US

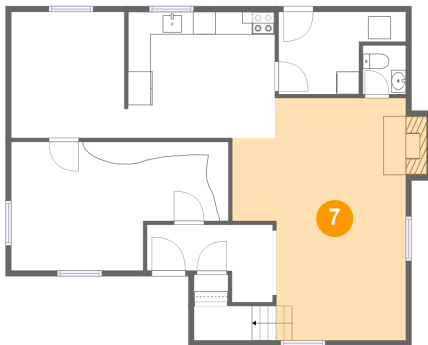
## 6 Floor 1 - WC



Dimensions: 3'10" x 4'4"  
Area: 16 sq. ft  
Counted as living area: Yes

Heated: Yes  
Finished: Yes  
Enclosed: Yes  
Contiguous: Yes  
Permitted: Yes  
Wet space: Yes  
Addition: No  
Conversion: No

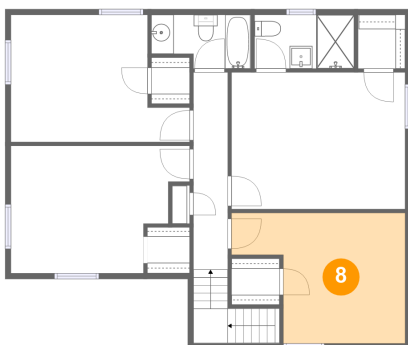
## 7 Floor 1 - Living Room



Dimensions: 15'4" x 21'5"  
Area: 284 sq. ft  
Counted as living area: Yes

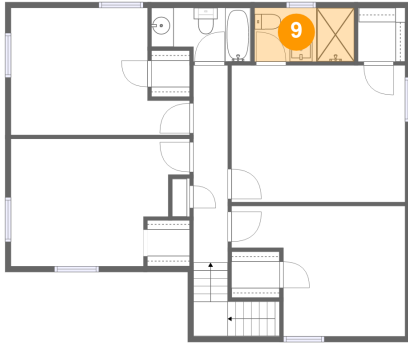
Heated: Yes  
Finished: Yes  
Enclosed: Yes  
Contiguous: Yes  
Permitted: Yes  
Wet space: No  
Addition: No  
Conversion: No

## 8 Floor 2 - Bedroom



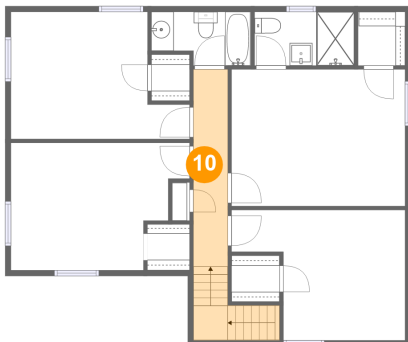
Dimensions: 15'4" x 11'6"  
Area: 141 sq. ft  
Counted as living area: Yes

Heated: Yes  
Finished: Yes  
Enclosed: Yes  
Contiguous: Yes  
Permitted: Yes  
Wet space: No  
Addition: No  
Conversion: No

**9418 Ashking Dr, Mechanicsville, VA, US****9 Floor 2 - Bath**

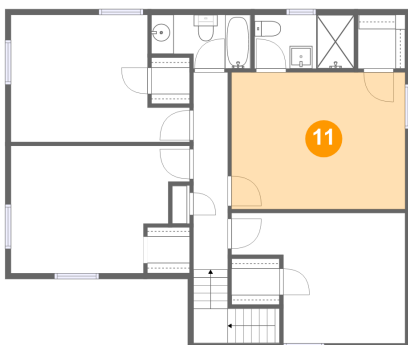
**Dimensions:** 8'10" x 4'9"  
**Area:** 42 sq. ft  
**Counted as living area:** Yes

**Heated:** Yes  
**Finished:** Yes  
**Enclosed:** Yes  
**Contiguous:** Yes  
**Permitted:** Yes  
**Wet space:** Yes  
**Addition:** No  
**Conversion:** No

**10 Floor 2 - Hall**

**Dimensions:** 3'1" x 17'6"  
**Area:** 87 sq. ft  
**Counted as living area:** Yes

**Heated:** Yes  
**Finished:** Yes  
**Enclosed:** Yes  
**Contiguous:** Yes  
**Permitted:** Yes  
**Wet space:** No  
**Addition:** No  
**Conversion:** No

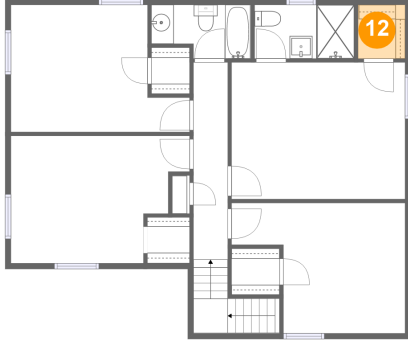
**11 Floor 2 - Primary Bedroom**

**Dimensions:** 15'4" x 12'1"  
**Area:** 186 sq. ft  
**Counted as living area:** Yes

**Heated:** Yes  
**Finished:** Yes  
**Enclosed:** Yes  
**Contiguous:** Yes  
**Permitted:** Yes  
**Wet space:** No  
**Addition:** No  
**Conversion:** No

# 9418 Ashking Dr, Mechanicsville, VA, US

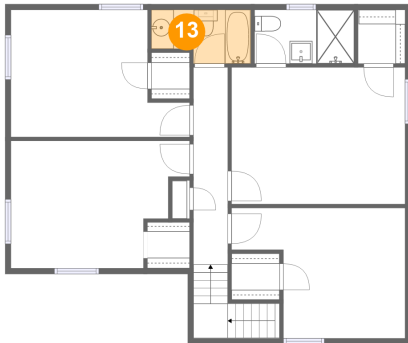
## 12 Floor 2 - Cl



Dimensions: 4'2" x 4'9"  
Area: 20 sq. ft  
Counted as living area: Yes

Heated: Yes  
Finished: Yes  
Enclosed: Yes  
Contiguous: Yes  
Permitted: Yes  
Wet space: No  
Addition: No  
Conversion: No

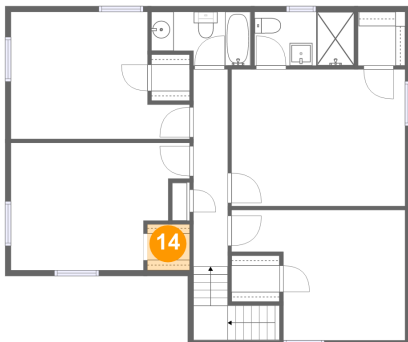
## 13 Floor 2 - Bath



Dimensions: 8'10" x 4'9"  
Area: 37 sq. ft  
Counted as living area: Yes

Heated: Yes  
Finished: Yes  
Enclosed: Yes  
Contiguous: Yes  
Permitted: Yes  
Wet space: Yes  
Addition: No  
Conversion: No

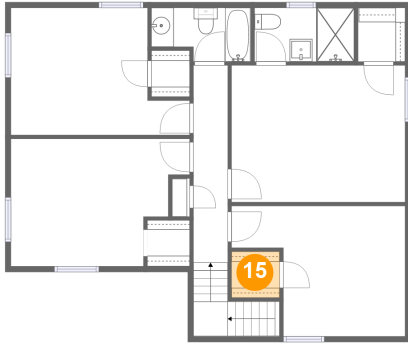
## 14 Floor 2 - Cl



Dimensions: 3'9" x 4'1"  
Area: 15 sq. ft  
Counted as living area: Yes

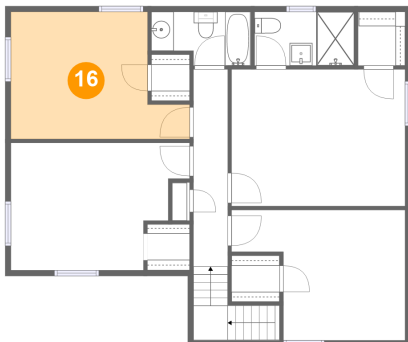
Heated: Yes  
Finished: Yes  
Enclosed: Yes  
Contiguous: Yes  
Permitted: Yes  
Wet space: No  
Addition: No  
Conversion: No



**9418 Ashking Dr, Mechanicsville, VA, US****15 Floor 2 - Cl**

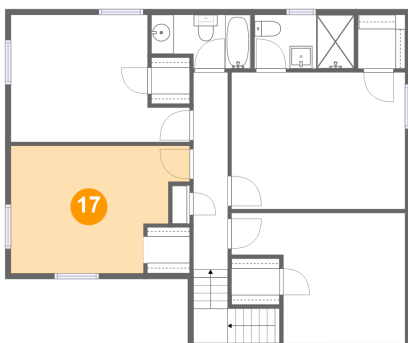
**Dimensions:** 4'3" x 4'1"  
**Area:** 17 sq. ft  
**Counted as living area:** Yes

**Heated:** Yes  
**Finished:** Yes  
**Enclosed:** Yes  
**Contiguous:** Yes  
**Permitted:** Yes  
**Wet space:** No  
**Addition:** No  
**Conversion:** No

**16 Floor 2 - Bedroom**

**Dimensions:** 15'10" x 11'3"  
**Area:** 148 sq. ft  
**Counted as living area:** Yes

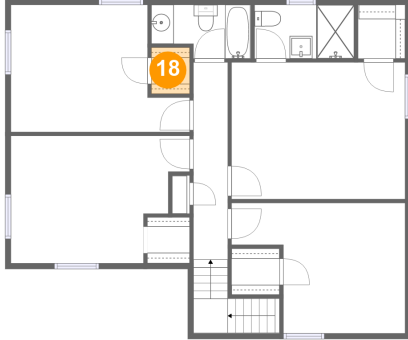
**Heated:** Yes  
**Finished:** Yes  
**Enclosed:** Yes  
**Contiguous:** Yes  
**Permitted:** Yes  
**Wet space:** No  
**Addition:** No  
**Conversion:** No

**17 Floor 2 - Bedroom**

**Dimensions:** 15'10" x 11'3"  
**Area:** 154 sq. ft  
**Counted as living area:** Yes

**Heated:** Yes  
**Finished:** Yes  
**Enclosed:** Yes  
**Contiguous:** Yes  
**Permitted:** Yes  
**Wet space:** No  
**Addition:** No  
**Conversion:** No

**18** Floor 2 - Cl



**Dimensions:** 3'5" x 4'1"  
**Area:** 14 sq. ft  
**Counted as living area:** Yes

**Heated:** Yes  
**Finished:** Yes  
**Enclosed:** Yes  
**Contiguous:** Yes  
**Permitted:** Yes  
**Wet space:** No  
**Addition:** No  
**Conversion:** No