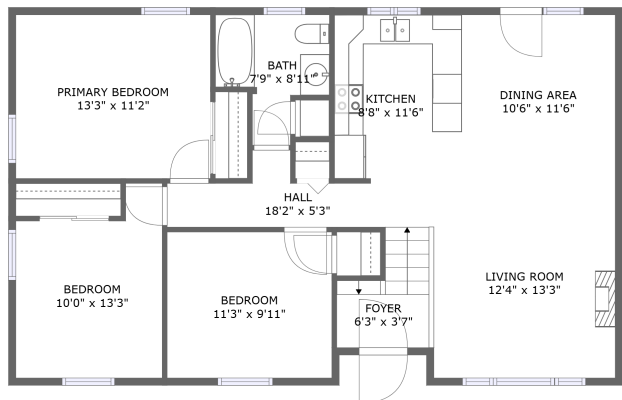
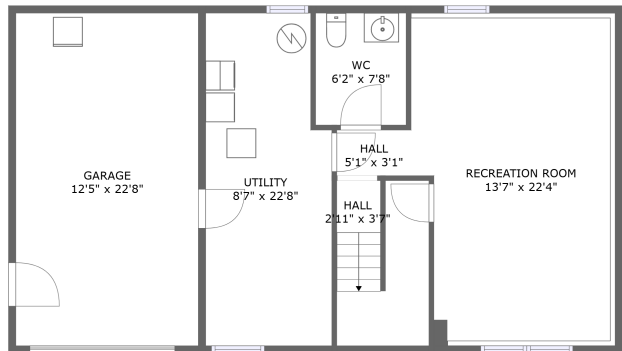


Home report

7774 Stoney Lonesome Road, Williamson, Wayne County, New York, United States, 14589



FLOOR 2



FLOOR 1

Total Area: 1445 sq. ft

Floor 1: 449 sq. ft, Floor 2: 996 sq. ft

Excluded: Utility 183 sq. ft, Garage 282 sq. ft, Walls: 144 sq. ft

Property summary

 **2** Floors

 **3** Bedrooms

 **1** Bathrooms

Home report

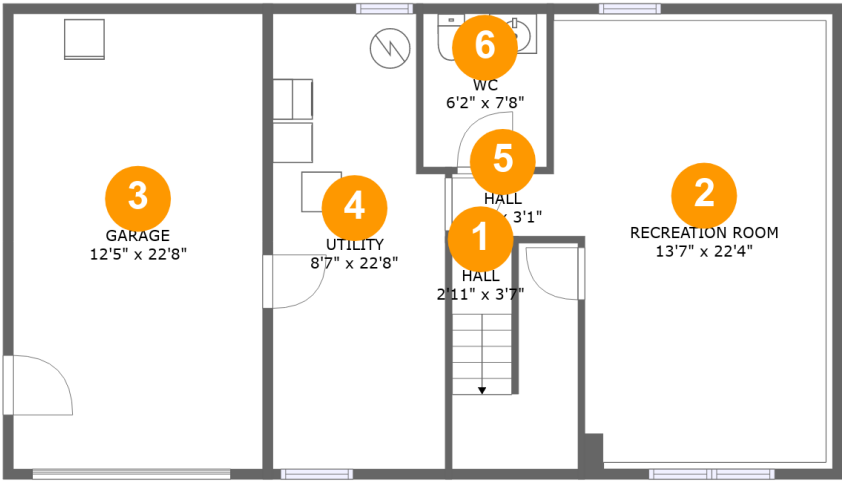
7774 Stoney Lonesome Road, Williamson, Wayne County, New York, United States, 14589

 **1**
Half baths

 **1**
Garages

Home report

7774 Stoney Lonesome Road, Williamson, Wayne County, New York, United States, 14589



Room dimensions

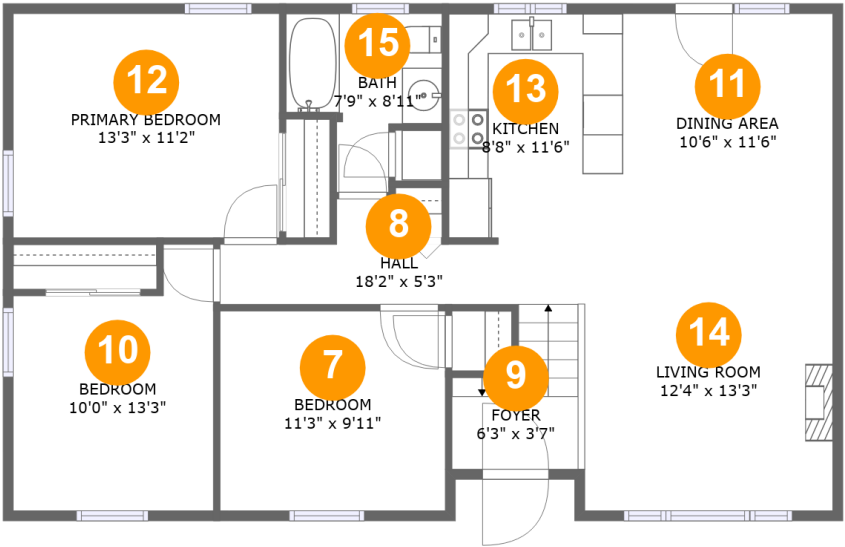
Floor 1

Total:449sqft Excluded: 465sqft

#		Max Dimensions	sqft	Included
1	Hall	2'11" x 3'7"	68 sq. ft	Yes
2	Recreation Room	13'7" x 22'4"	297 sq. ft	Yes
3	Garage	12'5" x 22'8"	282 sq. ft	No
4	Utility	8'7" x 22'8"	183 sq. ft	No
5	Hall	5'1" x 3'1"	16 sq. ft	Yes
6	WC	6'2" x 7'8"	47 sq. ft	Yes

Home report

7774 Stoney Lonesome Road, Williamson, Wayne County, New York, United States, 14589



Room dimensions

Floor 2 Total:996sqft Excluded: 0sqft

#		Max Dimensions	sqft	Included
7	Bedroom	11'3" x 9'11"	111 sq. ft	Yes
8	Hall	18'2" x 5'3"	60 sq. ft	Yes
9	Foyer	6'3" x 3'7"	42 sq. ft	Yes
10	Bedroom	10'0" x 13'3"	113 sq. ft	Yes
11	Dining Area	10'6" x 11'6"	120 sq. ft	Yes
12	Primary Bedroom	13'3" x 11'2"	148 sq. ft	Yes
13	Kitchen	8'8" x 11'6"	99 sq. ft	Yes
14	Living Room	12'4" x 13'3"	164 sq. ft	Yes
15	Bath	7'9" x 8'11"	50 sq. ft	Yes

1 Floor 1 - Hall



Max Dimensions: 2'11" x 3'7"
Calculated Area: 68 sq. ft
Included: Yes

Heated: Yes
Finished: Yes
Enclosed: Yes
Contiguous: Yes
Permitted: Yes
Wet space: No
Addition: No
Conversion: No

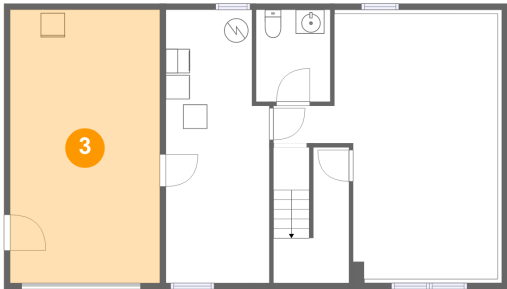
2 Floor 1 - Recreation Room



Max Dimensions: 13'7" x 22'4"
Calculated Area: 297 sq. ft
Included: Yes

Heated: Yes
Finished: Yes
Enclosed: Yes
Contiguous: Yes
Permitted: Yes
Wet space: No
Addition: No
Conversion: No

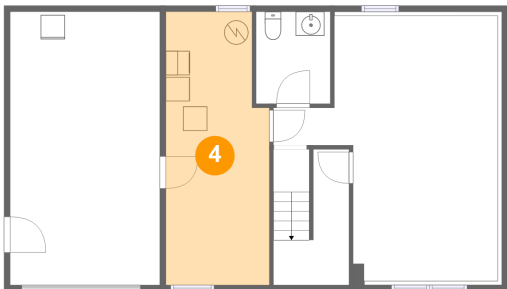
3 Floor 1 - Garage



Max Dimensions: 12'5" x 22'8"
Calculated Area: 282 sq. ft
Included: No

Heated: No
Finished: No
Enclosed: Yes
Contiguous: Yes
Permitted: Yes
Wet space: No
Addition: No
Conversion: No

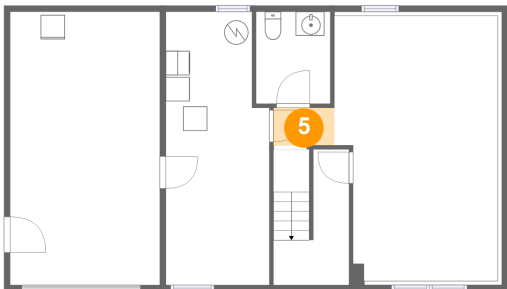
4 Floor 1 - Utility



Max Dimensions: 8'7" x 22'8"
Calculated Area: 183 sq. ft
Included: No

Heated: Yes
Finished: No
Enclosed: Yes
Contiguous: Yes
Permitted: Yes
Wet space: No
Addition: No
Conversion: No

5 Floor 1 - Hall

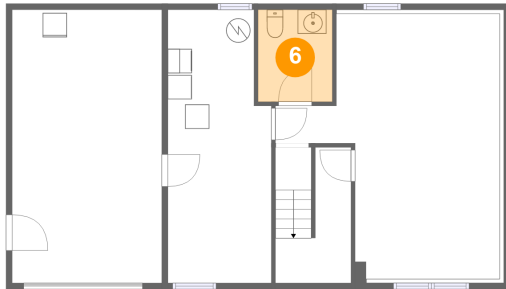


Max Dimensions: 5'1" x 3'1"
Calculated Area: 16 sq. ft
Included: Yes

Heated: Yes
Finished: Yes
Enclosed: Yes
Contiguous: Yes
Permitted: Yes
Wet space: No
Addition: No
Conversion: No

7774 Stoney Lonesome Road, Williamson, Wayne County, New York, United States, 14589

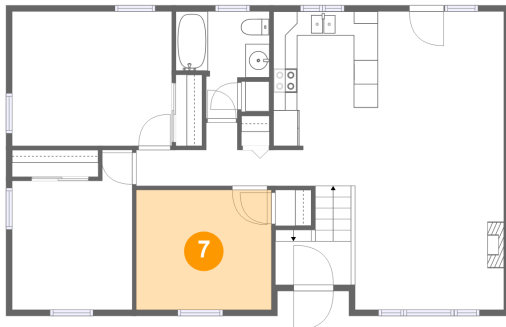
6 Floor 1 - WC



Max Dimensions: 6'2" x 7'8"
Calculated Area: 47 sq. ft
Included: Yes

Heated: Yes
Finished: Yes
Enclosed: Yes
Contiguous: Yes
Permitted: Yes
Wet space: Yes
Addition: No
Conversion: No

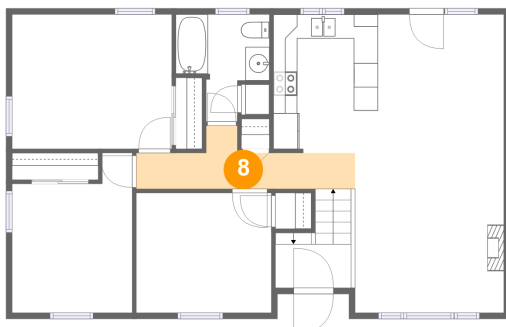
7 Floor 2 - Bedroom



Max Dimensions: 11'3" x 9'11"
Calculated Area: 111 sq. ft
Included: Yes

Heated: Yes
Finished: Yes
Enclosed: Yes
Contiguous: Yes
Permitted: Yes
Wet space: No
Addition: No
Conversion: No

8 Floor 2 - Hall

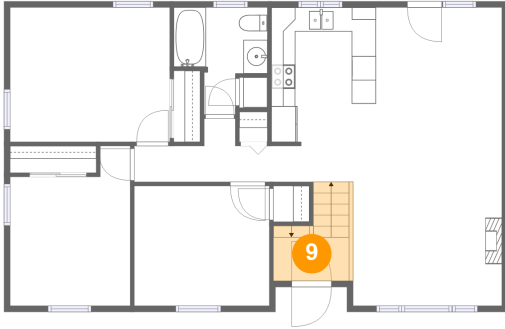


Max Dimensions: 18'2" x 5'3"
Calculated Area: 60 sq. ft
Included: Yes

Heated: Yes
Finished: Yes
Enclosed: Yes
Contiguous: Yes
Permitted: Yes
Wet space: No
Addition: No
Conversion: No

7774 Stoney Lonesome Road, Williamson, Wayne County, New York, United States, 14589

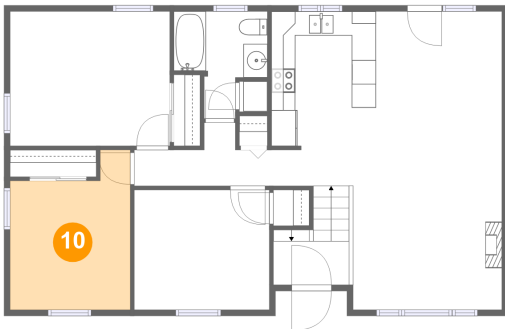
9 Floor 2 - Foyer



Max Dimensions: 6'3" x 3'7"
Calculated Area: 42 sq. ft
Included: Yes

Heated: Yes
Finished: Yes
Enclosed: Yes
Contiguous: Yes
Permitted: Yes
Wet space: No
Addition: No
Conversion: No

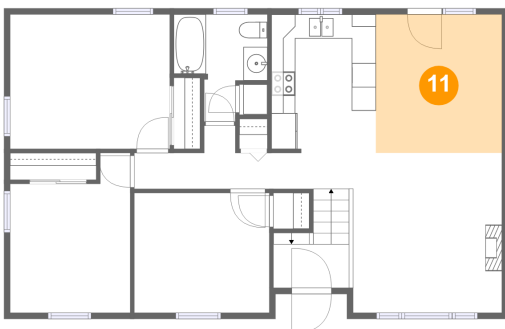
10 Floor 2 - Bedroom



Max Dimensions: 10'0" x 13'3"
Calculated Area: 113 sq. ft
Included: Yes

Heated: Yes
Finished: Yes
Enclosed: Yes
Contiguous: Yes
Permitted: Yes
Wet space: No
Addition: No
Conversion: No

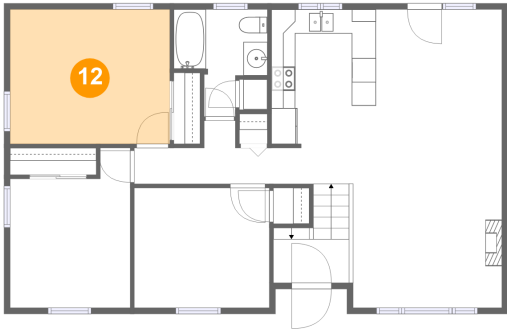
11 Floor 2 - Dining Area



Max Dimensions: 10'6" x 11'6"
Calculated Area: 120 sq. ft
Included: Yes

Heated: Yes
Finished: Yes
Enclosed: Yes
Contiguous: Yes
Permitted: Yes
Wet space: No
Addition: No
Conversion: No

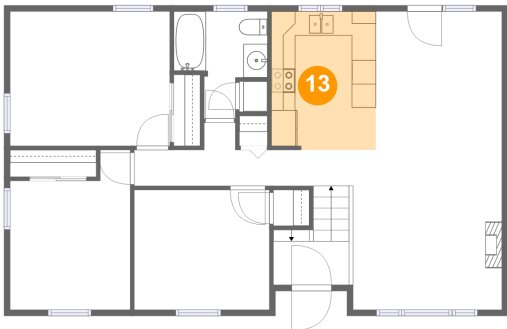
12 Floor 2 - Primary Bedroom



Max Dimensions: 13'3" x 11'2"
Calculated Area: 148 sq. ft
Included: Yes

Heated: Yes
Finished: Yes
Enclosed: Yes
Contiguous: Yes
Permitted: Yes
Wet space: No
Addition: No
Conversion: No

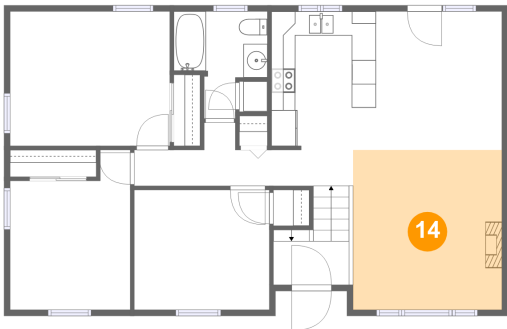
13 Floor 2 - Kitchen



Max Dimensions: 8'8" x 11'6"
Calculated Area: 99 sq. ft
Included: Yes

Heated: Yes
Finished: Yes
Enclosed: Yes
Contiguous: Yes
Permitted: Yes
Wet space: No
Addition: No
Conversion: No

14 Floor 2 - Living Room

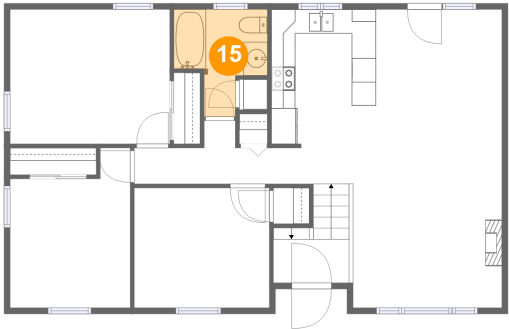


Max Dimensions: 12'4" x 13'3"
Calculated Area: 164 sq. ft
Included: Yes

Heated: Yes
Finished: Yes
Enclosed: Yes
Contiguous: Yes
Permitted: Yes
Wet space: No
Addition: No
Conversion: No

7774 Stoney Lonesome Road, Williamson, Wayne County, New York, United States, 14589

15 Floor 2 - Bath



Max Dimensions: 7'9" x 8'11"
Calculated Area: 50 sq. ft
Included: Yes

Heated: Yes
Finished: Yes
Enclosed: Yes
Contiguous: Yes
Permitted: Yes
Wet space: Yes
Addition: No
Conversion: No