


7825 Franklin Road, Boones Mill, Roanoke County, Virginia, United States, 24065



Property summary


 **0** Garages

 **3** Bedrooms

 **2** Bathrooms

 **1** Half baths

 **3** Floors

 **1,714** Gross living area sqft

 **3,298** Total sqft

**7825 Franklin Road, Boones Mill, Roanoke County,
Virginia, United States, 24065**



Room dimensions

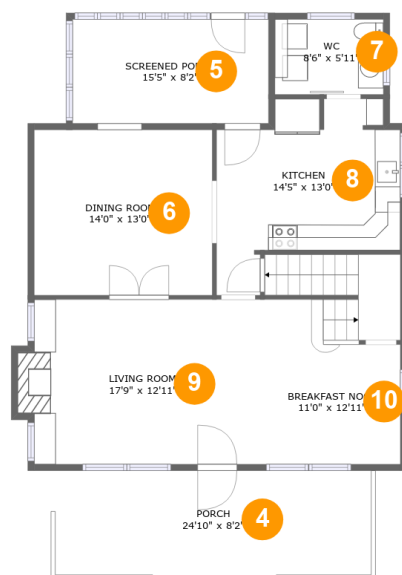
Floor 1

Total sqft: 1137

Living area: 0

#		Dimensions	sqft	Counted as living area
1	Storage	6'10" x 8'4"	57 sq. ft	No
2	Basement	28'5" x 34'8"	828 sq. ft	No
3	Storage	19'4" x 8'4"	162 sq. ft	No

7825 Franklin Road, Boones Mill, Roanoke County, Virginia, United States, 24065



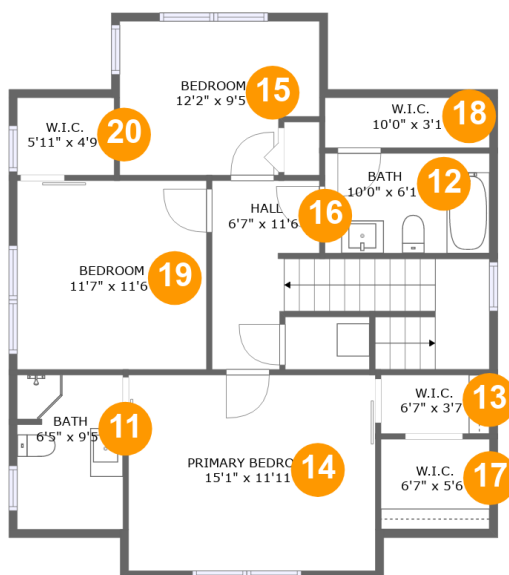
Room dimensions

Floor 2

Total sqft: 1245 Living area: 896

#		Dimensions	sqft	Counted as living area
4	Porch	24'10" x 8'2"	203 sq. ft	No
5	Screened Porch	15'5" x 8'2"	126 sq. ft	No
6	Dining Room	14'0" x 13'0"	184 sq. ft	Yes
7	WC	8'6" x 5'11"	50 sq. ft	Yes
8	Kitchen	14'5" x 13'0"	168 sq. ft	Yes
9	Living Room	17'9" x 12'11"	237 sq. ft	Yes
10	Breakfast Nook	11'0" x 12'11"	177 sq. ft	Yes

**7825 Franklin Road, Boones Mill, Roanoke County,
Virginia, United States, 24065**



Room dimensions

Floor 3

Total sqft: 916 Living area: 818

#		Dimensions	sqft	Counted as living area
11	Bath	6'5" x 9'5"	46 sq. ft	Yes
12	Bath	10'0" x 6'1"	61 sq. ft	Yes
13	W.I.C.	6'7" x 3'7"	24 sq. ft	Yes
14	Primary Bedroom	15'1" x 11'11"	180 sq. ft	Yes
15	Bedroom	12'2" x 9'5"	105 sq. ft	Yes
16	Hall	6'7" x 11'6"	123 sq. ft	Yes
17	W.I.C.	6'7" x 5'6"	22 sq. ft	Yes
18	W.I.C.	10'0" x 3'1"	31 sq. ft	No
19	Bedroom	11'7" x 11'6"	133 sq. ft	Yes
20	W.I.C.	5'11" x 4'9"	10 sq. ft	Yes

**7825 Franklin Road, Boones Mill, Roanoke County,
Virginia, United States, 24065**

1 Floor 1 - Storage



Dimensions: 6'10" x 8'4"
Area: 57 sq. ft
Counted as living area: No

Heated: No
Finished: No
Enclosed: No
Contiguous: No
Permitted: Yes
Wet space: No
Addition: No
Conversion: No

2 Floor 1 - Basement



Dimensions: 28'5" x 34'8"
Area: 828 sq. ft
Counted as living area: No

Heated: Yes
Finished: No
Enclosed: Yes
Contiguous: Yes
Permitted: Yes
Wet space: No
Addition: No
Conversion: No

**7825 Franklin Road, Boones Mill, Roanoke County,
Virginia, United States, 24065**

3 Floor 1 - Storage



Dimensions: 19'4" x 8'4"
Area: 162 sq. ft
Counted as living area: No

Heated: No
Finished: No
Enclosed: No
Contiguous: Yes
Permitted: Yes
Wet space: No
Addition: No
Conversion: No

4 Floor 2 - Porch



Dimensions: 24'10" x 8'2"
Area: 203 sq. ft
Counted as living area: No

Heated: No
Finished: Yes
Enclosed: No
Contiguous: Yes
Permitted: Yes
Wet space: No
Addition: No
Conversion: No

5 Floor 2 - Screened Porch

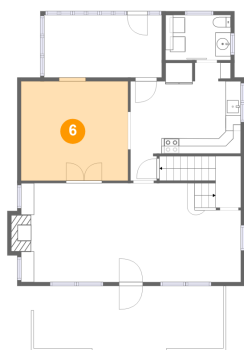


Dimensions: 15'5" x 8'2"
Area: 126 sq. ft
Counted as living area: No

Heated: No
Finished: Yes
Enclosed: No
Contiguous: Yes
Permitted: Yes
Wet space: No
Addition: No
Conversion: No

**7825 Franklin Road, Boones Mill, Roanoke County,
Virginia, United States, 24065**

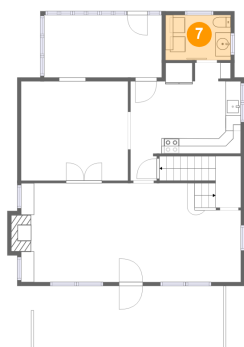
6 Floor 2 - Dining Room



Dimensions: 14'0" x 13'0"
Area: 184 sq. ft
Counted as living area: Yes

Heated: Yes
Finished: Yes
Enclosed: Yes
Contiguous: Yes
Permitted: Yes
Wet space: No
Addition: No
Conversion: No

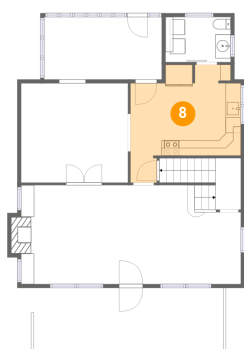
7 Floor 2 - WC



Dimensions: 8'6" x 5'11"
Area: 50 sq. ft
Counted as living area: Yes

Heated: Yes
Finished: Yes
Enclosed: Yes
Contiguous: Yes
Permitted: Yes
Wet space: Yes
Addition: No
Conversion: No

8 Floor 2 - Kitchen

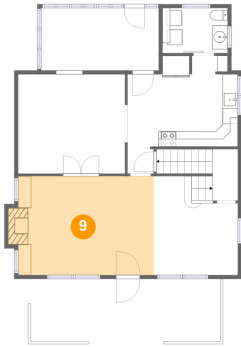


Dimensions: 14'5" x 13'0"
Area: 168 sq. ft
Counted as living area: Yes

Heated: Yes
Finished: Yes
Enclosed: Yes
Contiguous: Yes
Permitted: Yes
Wet space: No
Addition: No
Conversion: No

**7825 Franklin Road, Boones Mill, Roanoke County,
Virginia, United States, 24065**

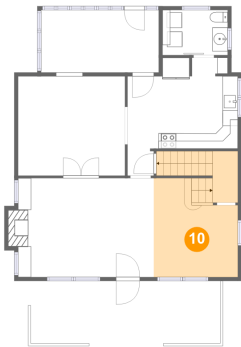
9 Floor 2 - Living Room



Dimensions: 17'9" x 12'11"
Area: 237 sq. ft
Counted as living area: Yes

Heated: Yes
Finished: Yes
Enclosed: Yes
Contiguous: Yes
Permitted: Yes
Wet space: No
Addition: No
Conversion: No

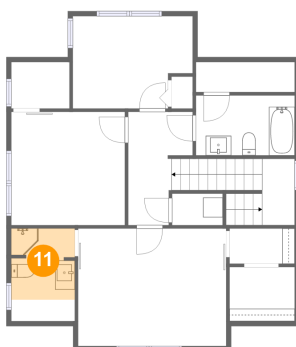
10 Floor 2 - Breakfast Nook



Dimensions: 11'0" x 12'11"
Area: 177 sq. ft
Counted as living area: Yes

Heated: Yes
Finished: Yes
Enclosed: Yes
Contiguous: Yes
Permitted: Yes
Wet space: No
Addition: No
Conversion: No

11 Floor 3 - Bath

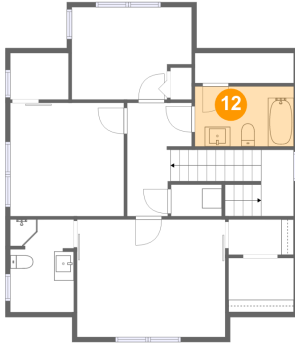


Dimensions: 6'5" x 9'5"
Area: 46 sq. ft
Counted as living area: Yes

Heated: Yes
Finished: Yes
Enclosed: Yes
Contiguous: Yes
Permitted: Yes
Wet space: Yes
Addition: No
Conversion: No

**7825 Franklin Road, Boones Mill, Roanoke County,
Virginia, United States, 24065**

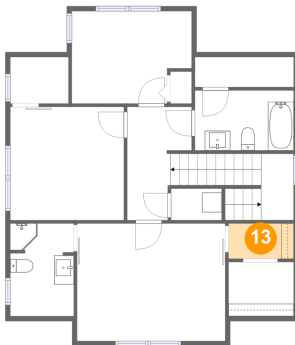
12 Floor 3 - Bath



Dimensions: 10'0" x 6'1"
Area: 61 sq. ft
Counted as living area: Yes

Heated: Yes
Finished: Yes
Enclosed: Yes
Contiguous: Yes
Permitted: Yes
Wet space: Yes
Addition: No
Conversion: No

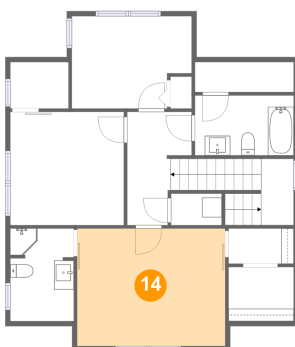
13 Floor 3 - W.I.C.



Dimensions: 6'7" x 3'7"
Area: 24 sq. ft
Counted as living area: Yes

Heated: Yes
Finished: Yes
Enclosed: Yes
Contiguous: Yes
Permitted: Yes
Wet space: No
Addition: No
Conversion: No

14 Floor 3 - Primary Bedroom

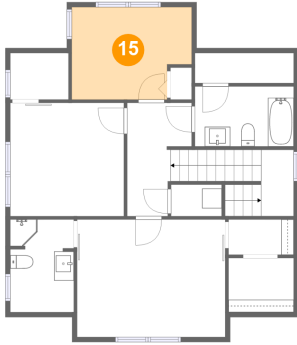


Dimensions: 15'1" x 11'11"
Area: 180 sq. ft
Counted as living area: Yes

Heated: Yes
Finished: Yes
Enclosed: Yes
Contiguous: Yes
Permitted: Yes
Wet space: No
Addition: No
Conversion: No

**7825 Franklin Road, Boones Mill, Roanoke County,
Virginia, United States, 24065**

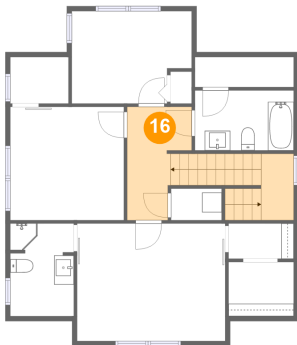
15 Floor 3 - Bedroom



Dimensions: 12'2" x 9'5"
Area: 105 sq. ft
Counted as living area: Yes

Heated: Yes
Finished: Yes
Enclosed: Yes
Contiguous: Yes
Permitted: Yes
Wet space: No
Addition: No
Conversion: No

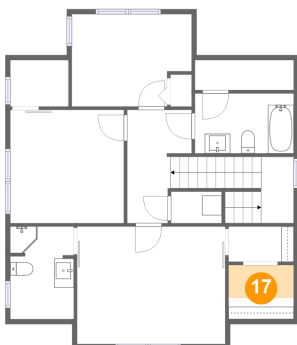
16 Floor 3 - Hall



Dimensions: 6'7" x 11'6"
Area: 123 sq. ft
Counted as living area: Yes

Heated: Yes
Finished: Yes
Enclosed: Yes
Contiguous: Yes
Permitted: Yes
Wet space: No
Addition: No
Conversion: No

17 Floor 3 - W.I.C.

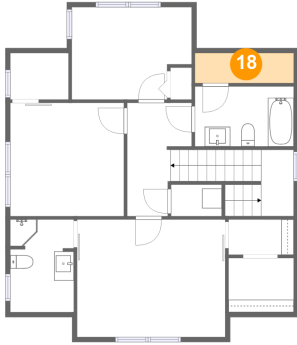


Dimensions: 6'7" x 5'6"
Area: 22 sq. ft
Counted as living area: Yes

Heated: Yes
Finished: Yes
Enclosed: Yes
Contiguous: Yes
Permitted: Yes
Wet space: No
Addition: No
Conversion: No

**7825 Franklin Road, Boones Mill, Roanoke County,
Virginia, United States, 24065**

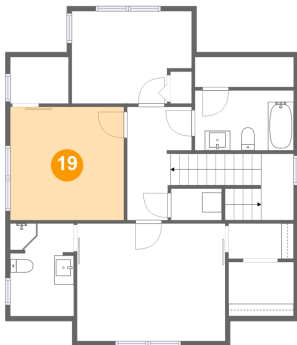
18 Floor 3 - W.I.C.



Dimensions: 10'0" x 3'1"
Area: 31 sq. ft
Counted as living area: No

Heated: Yes
Finished: Yes
Enclosed: Yes
Contiguous: Yes
Permitted: Yes
Wet space: No
Addition: No
Conversion: No

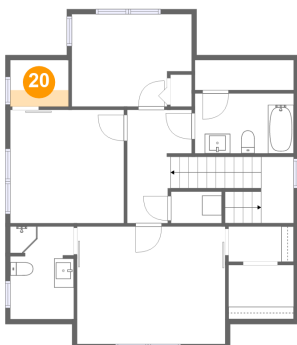
19 Floor 3 - Bedroom



Dimensions: 11'7" x 11'6"
Area: 133 sq. ft
Counted as living area: Yes

Heated: Yes
Finished: Yes
Enclosed: Yes
Contiguous: Yes
Permitted: Yes
Wet space: No
Addition: No
Conversion: No

20 Floor 3 - W.I.C.



Dimensions: 5'11" x 4'9"
Area: 10 sq. ft
Counted as living area: Yes

Heated: Yes
Finished: Yes
Enclosed: Yes
Contiguous: Yes
Permitted: Yes
Wet space: No
Addition: No
Conversion: No