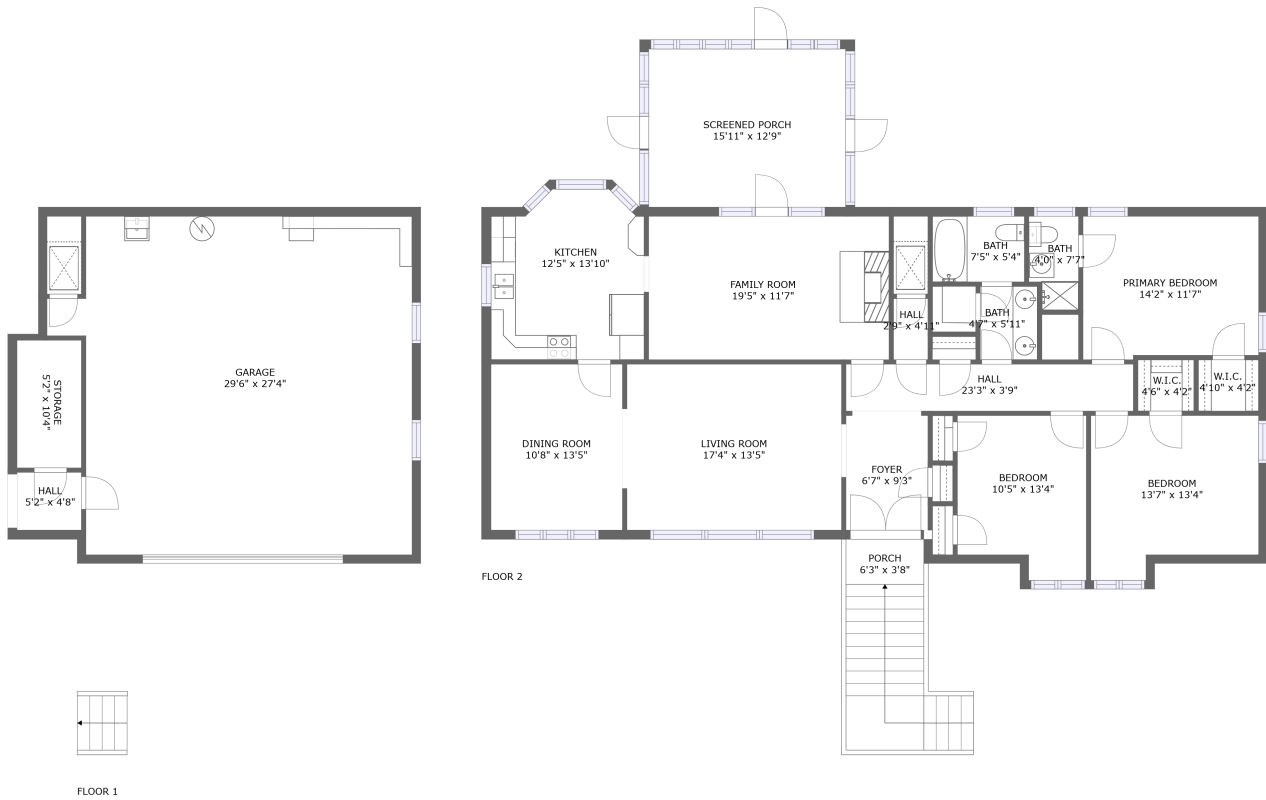



6808 Jones Valley Drive Southeast, Huntsville, Madison County, Alabama, United States, 35802



Property summary


 **1** Garages

 **3** Bedrooms

 **2** Bathrooms

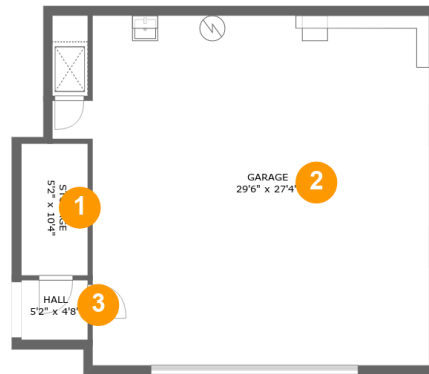
 **0** Half baths

 **2** Floors

 **1,799** Gross living area sqft

 **2,985** Total sqft

6808 Jones Valley Drive Southeast, Huntsville, Madison County, Alabama, United States, 35802



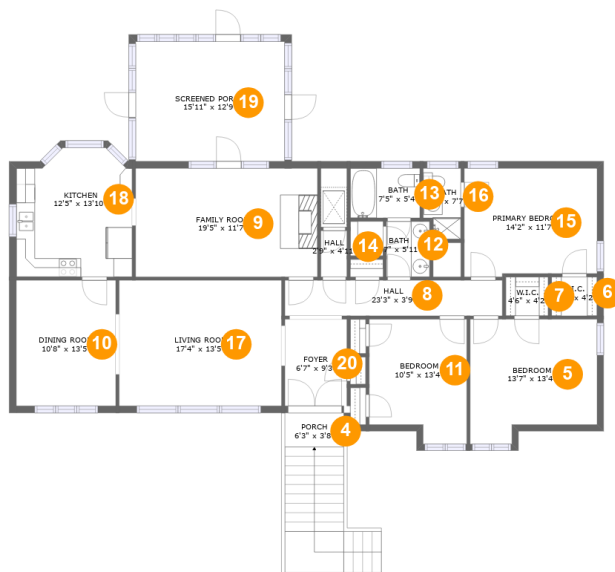
Room dimensions

Floor 1

Total sqft: 927 Living area: 0

#		Dimensions	sqft	Counted as living area
1	Storage	5'2" x 10'4"	54 sq. ft	No
2	Garage	29'6" x 27'4"	731 sq. ft	No
3	Hall	5'2" x 4'8"	24 sq. ft	No

6808 Jones Valley Drive Southeast, Huntsville, Madison County, Alabama, United States, 35802



Room dimensions

Floor 2

Total sqft: 2058

Living area: 1799

#		Dimensions	sqft	Counted as living area
4	Outdoor	6'3" x 3'8"	23 sq. ft	No
5	Bedroom	13'7" x 13'4"	162 sq. ft	Yes
6	Cl	4'10" x 4'2"	20 sq. ft	Yes
7	Cl	4'6" x 4'2"	19 sq. ft	Yes
8	Hall	23'3" x 3'9"	88 sq. ft	Yes
9	Living Room	19'5" x 11'7"	225 sq. ft	Yes
10	Dining Room	10'8" x 13'5"	143 sq. ft	Yes
11	Bedroom	10'5" x 13'4"	127 sq. ft	Yes
12	Bath	4'7" x 5'11"	27 sq. ft	Yes
13	Bath	7'5" x 5'4"	39 sq. ft	Yes
14	Hall	2'9" x 4'11"	14 sq. ft	Yes

Scan captured on Wed, 06 Nov 2024 16:26:20 GMT

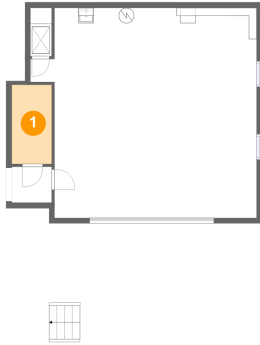
Information is calculated by Cubicasa technology deemed highly reliable but not guaranteed.

**6808 Jones Valley Drive Southeast, Huntsville,
Madison County, Alabama, United States, 35802**

#		Dimensions	sqft	Counted as living area
15	Bedroom	14'2" x 11'7"	161 sq. ft	Yes
16	Bath	4'0" x 7'7"	28 sq. ft	Yes
17	Living Room	17'4" x 13'5"	233 sq. ft	Yes
18	Kitchen	12'5" x 13'10"	158 sq. ft	Yes
19	Outdoor	15'11" x 12'9"	204 sq. ft	No
20	Entry	6'7" x 9'3"	61 sq. ft	Yes

6808 Jones Valley Drive Southeast, Huntsville, Madison County, Alabama, United States, 35802

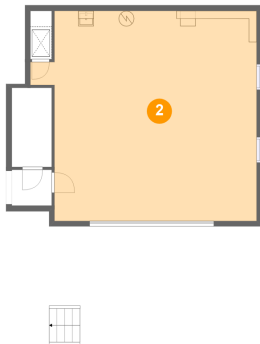
1 Floor 1 - Storage



Dimensions: 5'2" x 10'4"
Area: 54 sq. ft
Counted as living area: No

Heated: No
Finished: No
Enclosed: No
Contiguous: Yes
Permitted: Yes
Wet space: No
Addition: No
Conversion: No

2 Floor 1 - Garage

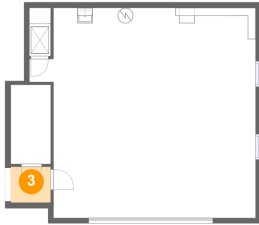


Dimensions: 29'6" x 27'4"
Area: 731 sq. ft
Counted as living area: No

Heated: No
Finished: No
Enclosed: Yes
Contiguous: Yes
Permitted: Yes
Wet space: No
Addition: No
Conversion: No

6808 Jones Valley Drive Southeast, Huntsville, Madison County, Alabama, United States, 35802

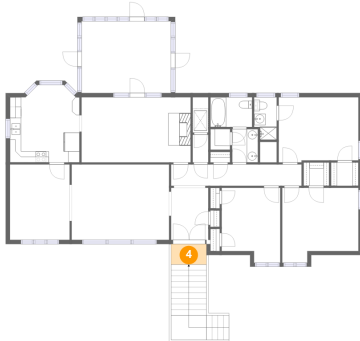
3 Floor 1 - Hall



Dimensions: 5'2" x 4'8"
Area: 24 sq. ft
Counted as living area: No

Heated: Yes
Finished: Yes
Enclosed: Yes
Contiguous: No
Permitted: Yes
Wet space: No
Addition: No
Conversion: No

4 Floor 2 - Outdoor



Dimensions: 6'3" x 3'8"
Area: 23 sq. ft
Counted as living area: No

Heated: No
Finished: Yes
Enclosed: No
Contiguous: Yes
Permitted: Yes
Wet space: No
Addition: No
Conversion: No

5 Floor 2 - Bedroom



Dimensions: 13'7" x 13'4"
Area: 162 sq. ft
Counted as living area: Yes

Heated: Yes
Finished: Yes
Enclosed: Yes
Contiguous: Yes
Permitted: Yes
Wet space: No
Addition: No
Conversion: No

6808 Jones Valley Drive Southeast, Huntsville, Madison County, Alabama, United States, 35802

6 Floor 2 - Cl



Dimensions: 4'10" x 4'2"
Area: 20 sq. ft
Counted as living area: Yes

Heated: Yes
Finished: Yes
Enclosed: Yes
Contiguous: Yes
Permitted: Yes
Wet space: No
Addition: No
Conversion: No

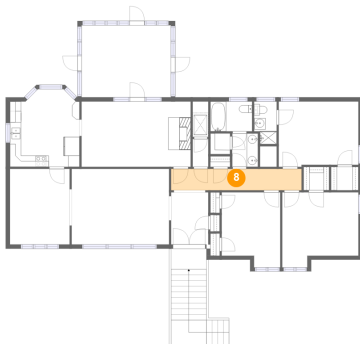
7 Floor 2 - Cl



Dimensions: 4'6" x 4'2"
Area: 19 sq. ft
Counted as living area: Yes

Heated: Yes
Finished: Yes
Enclosed: Yes
Contiguous: Yes
Permitted: Yes
Wet space: No
Addition: No
Conversion: No

8 Floor 2 - Hall

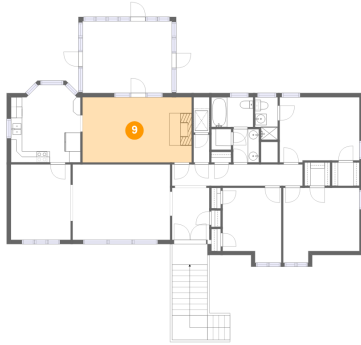


Dimensions: 23'3" x 3'9"
Area: 88 sq. ft
Counted as living area: Yes

Heated: Yes
Finished: Yes
Enclosed: Yes
Contiguous: Yes
Permitted: Yes
Wet space: No
Addition: No
Conversion: No

6808 Jones Valley Drive Southeast, Huntsville, Madison County, Alabama, United States, 35802

9 Floor 2 - Living Room



Dimensions: 19'5" x 11'7"
Area: 225 sq. ft
Counted as living area: Yes

Heated: Yes
Finished: Yes
Enclosed: Yes
Contiguous: Yes
Permitted: Yes
Wet space: No
Addition: No
Conversion: No

10 Floor 2 - Dining Room



Dimensions: 10'8" x 13'5"
Area: 143 sq. ft
Counted as living area: Yes

Heated: Yes
Finished: Yes
Enclosed: Yes
Contiguous: Yes
Permitted: Yes
Wet space: No
Addition: No
Conversion: No

11 Floor 2 - Bedroom



Dimensions: 10'5" x 13'4"
Area: 127 sq. ft
Counted as living area: Yes

Heated: Yes
Finished: Yes
Enclosed: Yes
Contiguous: Yes
Permitted: Yes
Wet space: No
Addition: No
Conversion: No

6808 Jones Valley Drive Southeast, Huntsville, Madison County, Alabama, United States, 35802

12 Floor 2 - Bath



Dimensions: 4'7" x 5'11"
Area: 27 sq. ft
Counted as living area: Yes

Heated: Yes
Finished: Yes
Enclosed: Yes
Contiguous: Yes
Permitted: Yes
Wet space: Yes
Addition: No
Conversion: No

13 Floor 2 - Bath



Dimensions: 7'5" x 5'4"
Area: 39 sq. ft
Counted as living area: Yes

Heated: Yes
Finished: Yes
Enclosed: Yes
Contiguous: Yes
Permitted: Yes
Wet space: Yes
Addition: No
Conversion: No

14 Floor 2 - Hall

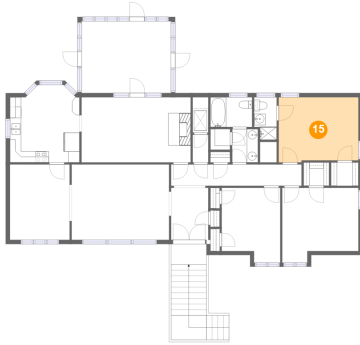


Dimensions: 2'9" x 4'11"
Area: 14 sq. ft
Counted as living area: Yes

Heated: Yes
Finished: Yes
Enclosed: Yes
Contiguous: Yes
Permitted: Yes
Wet space: No
Addition: No
Conversion: No

6808 Jones Valley Drive Southeast, Huntsville, Madison County, Alabama, United States, 35802

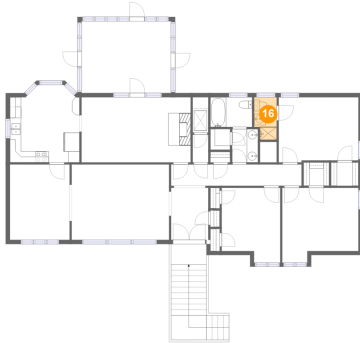
15 Floor 2 - Bedroom



Dimensions: 14'2" x 11'7"
Area: 161 sq. ft
Counted as living area: Yes

Heated: Yes
Finished: Yes
Enclosed: Yes
Contiguous: Yes
Permitted: Yes
Wet space: No
Addition: No
Conversion: No

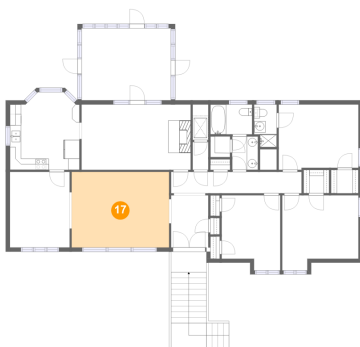
16 Floor 2 - Bath



Dimensions: 4'0" x 7'7"
Area: 28 sq. ft
Counted as living area: Yes

Heated: Yes
Finished: Yes
Enclosed: Yes
Contiguous: Yes
Permitted: Yes
Wet space: Yes
Addition: No
Conversion: No

17 Floor 2 - Living Room

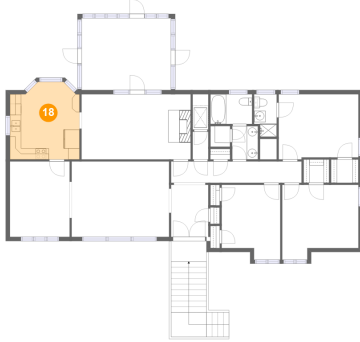


Dimensions: 17'4" x 13'5"
Area: 233 sq. ft
Counted as living area: Yes

Heated: Yes
Finished: Yes
Enclosed: Yes
Contiguous: Yes
Permitted: Yes
Wet space: No
Addition: No
Conversion: No

6808 Jones Valley Drive Southeast, Huntsville, Madison County, Alabama, United States, 35802

18 Floor 2 - Kitchen



Dimensions: 12'5" x 13'10"
Area: 158 sq. ft
Counted as living area: Yes

Heated: Yes
Finished: Yes
Enclosed: Yes
Contiguous: Yes
Permitted: Yes
Wet space: No
Addition: No
Conversion: No

19 Floor 2 - Outdoor



Dimensions: 15'11" x 12'9"
Area: 204 sq. ft
Counted as living area: No

Heated: No
Finished: Yes
Enclosed: No
Contiguous: Yes
Permitted: Yes
Wet space: No
Addition: No
Conversion: No

20 Floor 2 - Entry



Dimensions: 6'7" x 9'3"
Area: 61 sq. ft
Counted as living area: Yes

Heated: Yes
Finished: Yes
Enclosed: Yes
Contiguous: Yes
Permitted: Yes
Wet space: No
Addition: No
Conversion: No