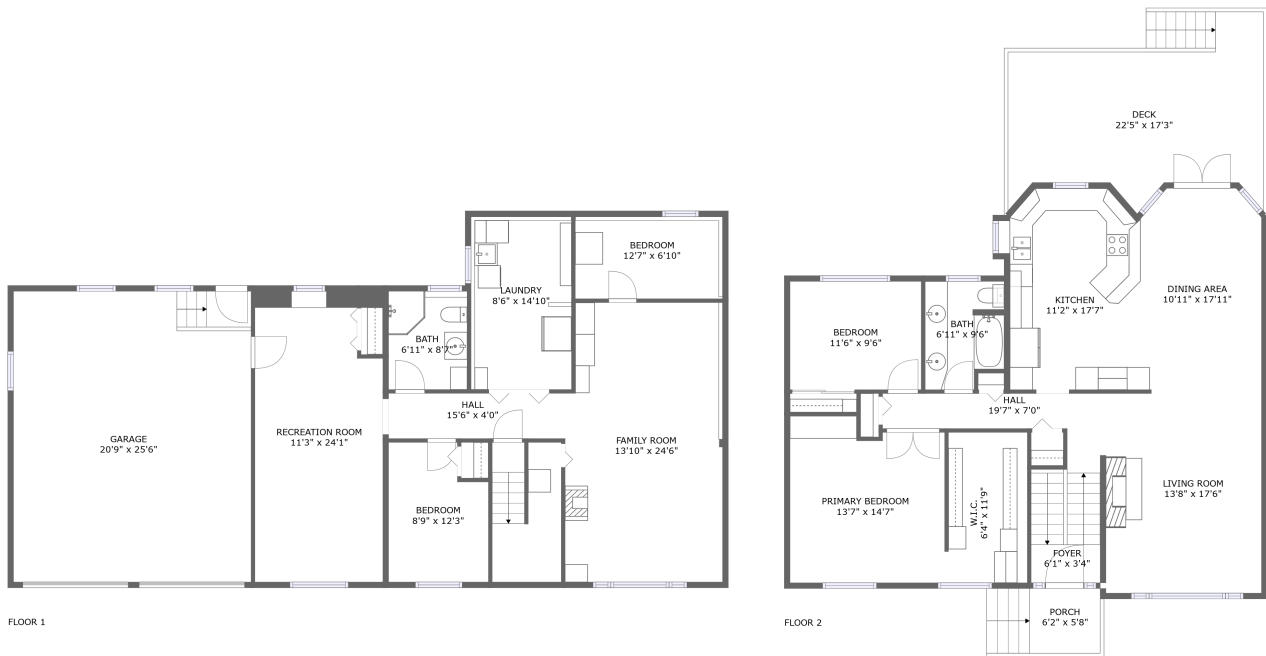


114 Ranchview Drive, Chase River, Cinnabar Valley, Nanaimo, Regional District of Nanaimo,



Property Summary


 **1** garages

 **4** bedrooms

 **2** bathrooms

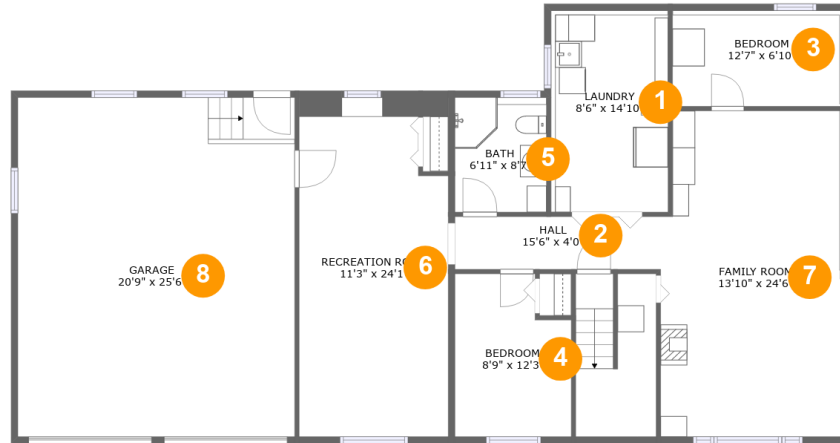
 **0** half baths

 **2** floors

 **2,376** Gross Living Area sqft

 **3,493** total sqft

114 Ranchview Drive, Chase River, Cinnabar Valley, Nanaimo, Regional District of Nanaimo,



Room Dimensions

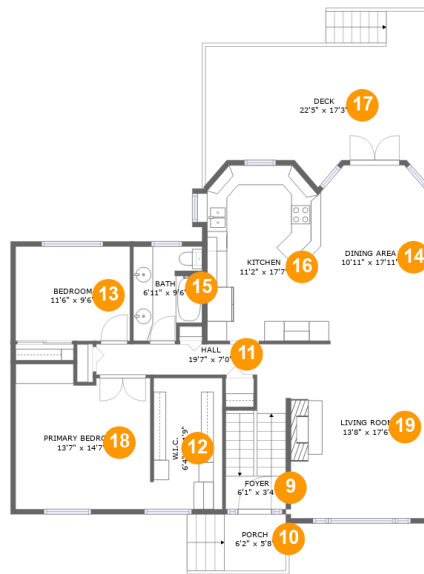
Floor 1

Total sqft: 1823

Living area: 1028

#	Room name	Dimensions	Area (sqft)	Counted as Living Area
1	Laundry	8'6" x 14'10"	133 sq. ft	No
2	Hall	15'6" x 4'0"	61 sq. ft	Yes
3	Bedroom	12'7" x 6'10"	93 sq. ft	Yes
4	Bedroom	8'9" x 12'3"	98 sq. ft	Yes
5	Bath	6'11" x 8'7"	59 sq. ft	Yes
6	Recreation Room	11'3" x 24'1"	264 sq. ft	Yes
7	Family Room	13'10" x 24'6"	331 sq. ft	Yes
8	Garage	20'9" x 25'6"	531 sq. ft	No

114 Ranchview Drive, Chase River, Cinnabar Valley, Nanaimo, Regional District of Nanaimo,



Room Dimensions

Floor 2

Total sqft: 1670

Living area: 1348

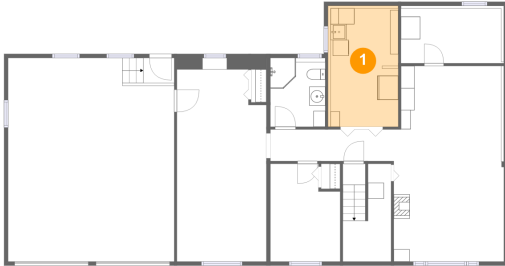
#	Room name	Dimensions	Area (sqft)	Counted as Living Area
9	Foyer	6'1" x 3'4"	61 sq. ft	Yes
10	Porch	6'2" x 5'8"	35 sq. ft	No
11	Hall	19'7" x 7'0"	73 sq. ft	Yes
12	W.i.c.	6'4" x 11'9"	92 sq. ft	Yes
13	Bedroom	11'6" x 9'6"	109 sq. ft	Yes
14	Dining Area	10'11" x 17'11"	189 sq. ft	Yes
15	Bath	6'11" x 9'6"	60 sq. ft	Yes
16	Kitchen	11'2" x 17'7"	190 sq. ft	Yes
17	Deck	22'5" x 17'3"	283 sq. ft	No
18	Primary Bedroom	13'7" x 14'7"	185 sq. ft	Yes
19	Living Room	13'8" x 17'6"	239 sq. ft	Yes

Scan captured on Sat, 24 Aug 2024 18:20:29 GMT

Information is calculated by CubiCasa technology; deemed highly reliable but not guaranteed.

114 Ranchview Drive, Chase River, Cinnabar Valley, Nanaimo, Regional District of Nanaimo,

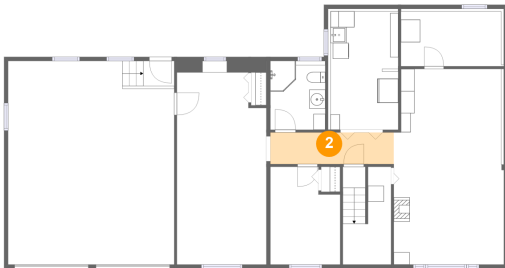
1 Floor 1 - Laundry



Dimensions: 8'6" x 14'10"
Area: 133 sq. ft
Counted as Living Area: No

Heated: Yes
Finished: No
Enclosed: Yes
Contiguous: Yes
Permitted: Yes
Wet Space: No
Addition: No
Conversion: No

2 Floor 1 - Hall

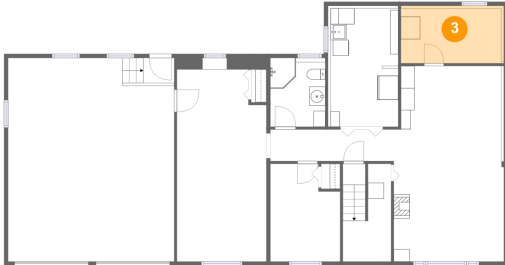


Dimensions: 15'6" x 4'0"
Area: 61 sq. ft
Counted as Living Area: Yes

Heated: Yes
Finished: Yes
Enclosed: Yes
Contiguous: Yes
Permitted: Yes
Wet Space: No
Addition: No
Conversion: No

114 Ranchview Drive, Chase River, Cinnabar Valley, Nanaimo, Regional District of Nanaimo,

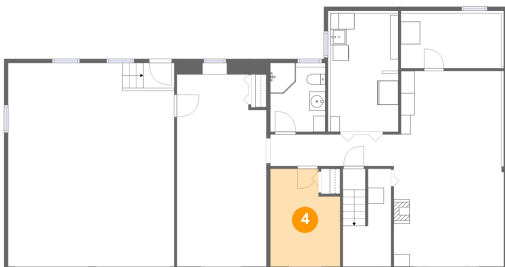
3 Floor 1 - Bedroom



Dimensions: 12'7" x 6'10"
Area: 93 sq. ft
Counted as Living Area:
Yes

Heated: Yes
Finished: Yes
Enclosed: Yes
Contiguous:
Yes
Permitted: Yes
Wet Space: No
Addition: No
Conversion: No

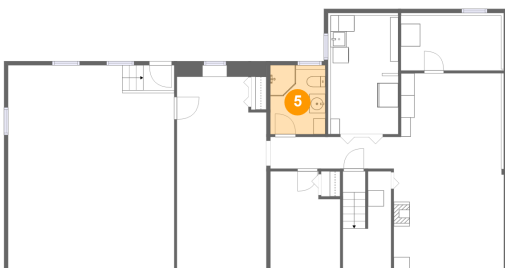
4 Floor 1 - Bedroom



Dimensions: 8'9" x 12'3"
Area: 98 sq. ft
Counted as Living Area:
Yes

Heated: Yes
Finished: Yes
Enclosed: Yes
Contiguous:
Yes
Permitted: Yes
Wet Space: No
Addition: No
Conversion: No

5 Floor 1 - Bath

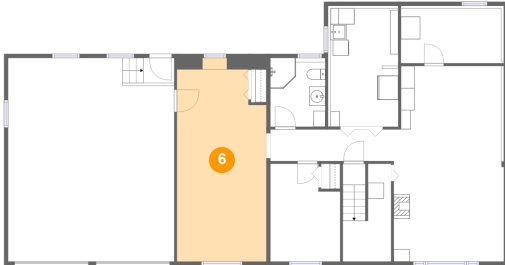


Dimensions: 6'11" x 8'7"
Area: 59 sq. ft
Counted as Living Area:
Yes

Heated: Yes
Finished: Yes
Enclosed: Yes
Contiguous:
Yes
Permitted: Yes
Wet Space: Yes
Addition: No
Conversion: No

114 Ranchview Drive, Chase River, Cinnabar Valley, Nanaimo, Regional District of Nanaimo,

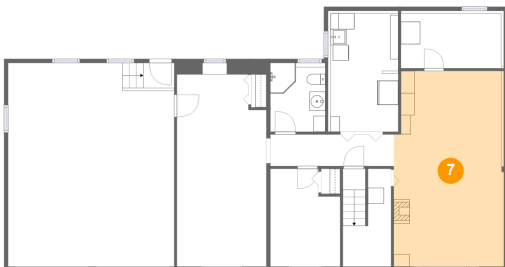
6 Floor 1 - Recreation Room



Dimensions: 11'3" x 24'1"
Area: 264 sq. ft
Counted as Living Area:
Yes

Heated: Yes
Finished: Yes
Enclosed: Yes
Contiguous:
Yes
Permitted: Yes
Wet Space: No
Addition: No
Conversion: No

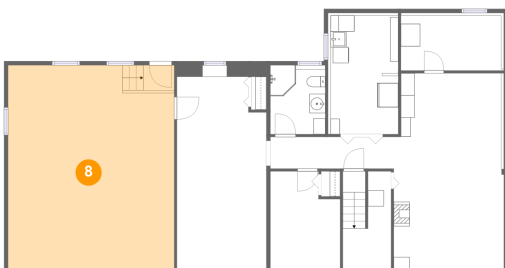
7 Floor 1 - Family Room



Dimensions: 13'10" x 24'6"
Area: 331 sq. ft
Counted as Living Area:
Yes

Heated: Yes
Finished: Yes
Enclosed: Yes
Contiguous:
Yes
Permitted: Yes
Wet Space: No
Addition: No
Conversion: No

8 Floor 1 - Garage

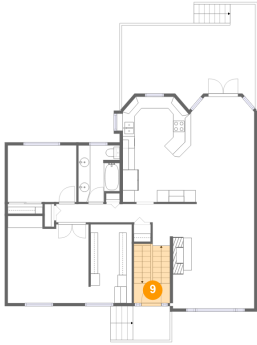


Dimensions: 20'9" x 25'6"
Area: 531 sq. ft
Counted as Living Area: No

Heated: No
Finished: No
Enclosed: Yes
Contiguous: Yes
Permitted: Yes
Wet Space: No
Addition: No
Conversion: No

114 Ranchview Drive, Chase River, Cinnabar Valley, Nanaimo, Regional District of Nanaimo,

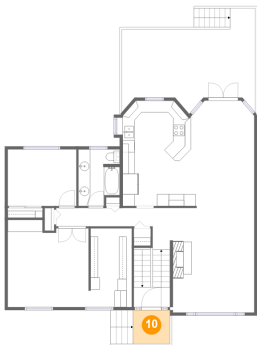
9 Floor 2 - Foyer



Dimensions: 6'1" x 3'4"
Area: 61 sq. ft
Counted as Living Area: Yes

Heated: Yes
Finished: Yes
Enclosed: Yes
Contiguous: Yes
Permitted: Yes
Wet Space: No
Addition: No
Conversion: No

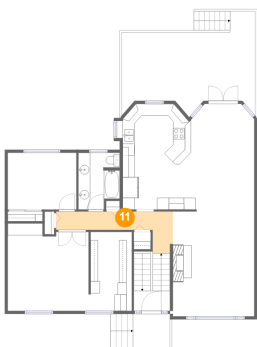
10 Floor 2 - Porch



Dimensions: 6'2" x 5'8"
Area: 35 sq. ft
Counted as Living Area: No

Heated: No
Finished: Yes
Enclosed: No
Contiguous: Yes
Permitted: Yes
Wet Space: No
Addition: No
Conversion: No

11 Floor 2 - Hall

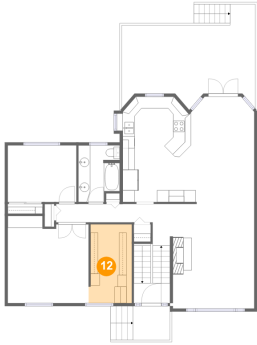


Dimensions: 19'7" x 7'0"
Area: 73 sq. ft
Counted as Living Area: Yes

Heated: Yes
Finished: Yes
Enclosed: Yes
Contiguous: Yes
Permitted: Yes
Wet Space: No
Addition: No
Conversion: No

114 Ranchview Drive, Chase River, Cinnabar Valley, Nanaimo, Regional District of Nanaimo,

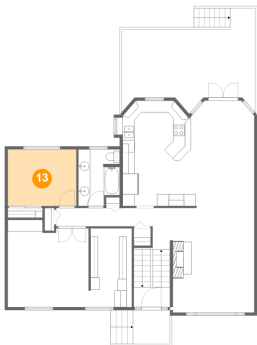
12 Floor 2 - W.i.c.



Dimensions: 6'4" x 11'9"
Area: 92 sq. ft
Counted as Living Area:
Yes

Heated: Yes
Finished: Yes
Enclosed: Yes
Contiguous:
Yes
Permitted: Yes
Wet Space: No
Addition: No
Conversion: No

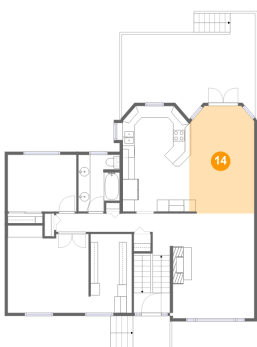
13 Floor 2 - Bedroom



Dimensions: 11'6" x 9'6"
Area: 109 sq. ft
Counted as Living Area:
Yes

Heated: Yes
Finished: Yes
Enclosed: Yes
Contiguous:
Yes
Permitted: Yes
Wet Space: No
Addition: No
Conversion: No

14 Floor 2 - Dining Area

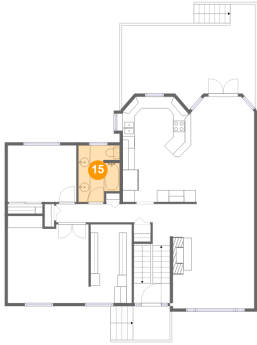


Dimensions: 10'11" x 17'11"
Area: 189 sq. ft
Counted as Living Area:
Yes

Heated: Yes
Finished: Yes
Enclosed: Yes
Contiguous:
Yes
Permitted: Yes
Wet Space: No
Addition: No
Conversion: No

114 Ranchview Drive, Chase River, Cinnabar Valley, Nanaimo, Regional District of Nanaimo,

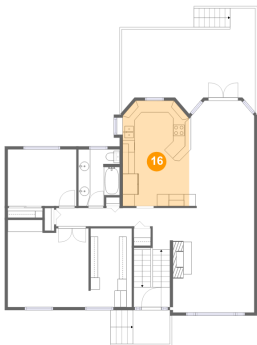
15 Floor 2 - Bath



Dimensions: 6'11" x 9'6"
Area: 60 sq. ft
Counted as Living Area:
Yes

Heated: Yes
Finished: Yes
Enclosed: Yes
Contiguous:
Yes
Permitted: Yes
Wet Space: Yes
Addition: No
Conversion: No

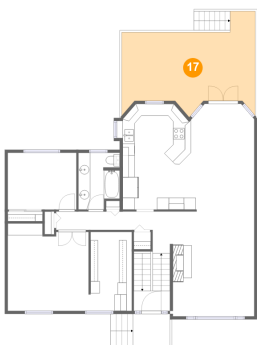
16 Floor 2 - Kitchen



Dimensions: 11'2" x 17'7"
Area: 190 sq. ft
Counted as Living Area:
Yes

Heated: Yes
Finished: Yes
Enclosed: Yes
Contiguous:
Yes
Permitted: Yes
Wet Space: No
Addition: No
Conversion: No

17 Floor 2 - Deck

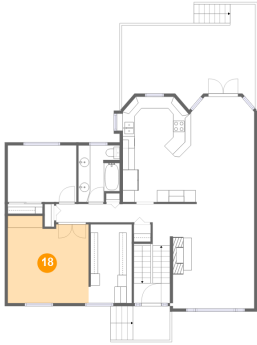


Dimensions: 22'5" x 17'3"
Area: 283 sq. ft
Counted as Living Area: No

Heated: No
Finished: Yes
Enclosed: No
Contiguous: Yes
Permitted: Yes
Wet Space: No
Addition: No
Conversion: No

114 Ranchview Drive, Chase River, Cinnabar Valley, Nanaimo, Regional District of Nanaimo,

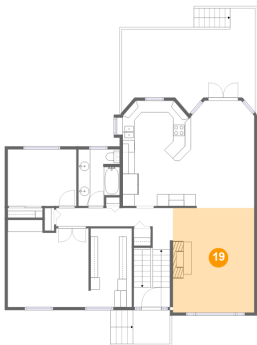
18 Floor 2 - Primary Bedroom



Dimensions: 13'7" x 14'7"
Area: 185 sq. ft
Counted as Living Area:
Yes

Heated: Yes
Finished: Yes
Enclosed: Yes
Contiguous:
Yes
Permitted: Yes
Wet Space: No
Addition: No
Conversion: No

19 Floor 2 - Living Room



Dimensions: 13'8" x 17'6"
Area: 239 sq. ft
Counted as Living Area:
Yes

Heated: Yes
Finished: Yes
Enclosed: Yes
Contiguous:
Yes
Permitted: Yes
Wet Space: No
Addition: No
Conversion: No