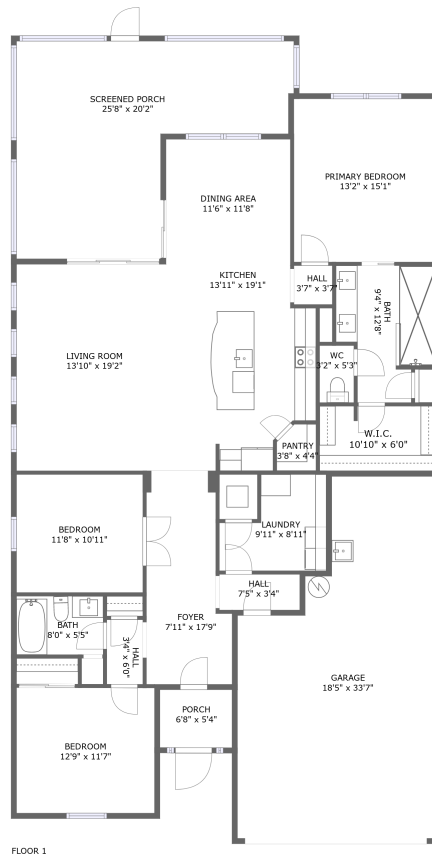



13440 Esposito St, Venice, FL, US



Property summary


 **1** Garages

 **3** Bedrooms

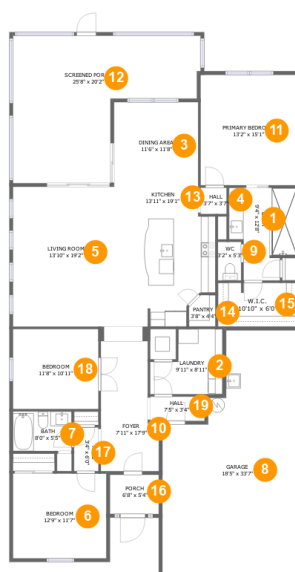
 **2** Bathrooms

 **0** Half baths

 **1** Floors

 **1,842**
Gross living
area sqft

 **2,825**
Total sqft

13440 Esposito St, Venice, FL, US**Room dimensions****Floor 1****Total sqft: 2825 Living area: 1842**

#		Dimensions	sqft	Counted as living area
1	Bath	9'4" x 12'8"	99 sq. ft	Yes
2	Laundry	9'11" x 8'11"	71 sq. ft	Yes
3	Dining Area	11'6" x 11'8"	134 sq. ft	Yes
4	Hall	3'7" x 3'7"	13 sq. ft	Yes
5	Living Room	13'10" x 19'2"	265 sq. ft	Yes
6	Bedroom	12'9" x 11'7"	148 sq. ft	Yes
7	Bath	8'0" x 5'5"	43 sq. ft	Yes
8	Garage	18'5" x 33'7"	515 sq. ft	No
9	WC	3'2" x 5'3"	17 sq. ft	Yes
10	Foyer	7'11" x 17'9"	124 sq. ft	Yes
11	Primary Bedroom	13'2" x 15'1"	200 sq. ft	Yes

13440 Esposito St, Venice, FL, US

#		Dimensions	sqft	Counted as living area
12	Screened Porch	25'8" x 20'2"	373 sq. ft	No
13	Kitchen	13'11" x 19'1"	238 sq. ft	Yes
14	Pantry	3'8" x 4'4"	14 sq. ft	Yes
15	W.I.C.	10'10" x 6'0"	65 sq. ft	Yes
16	Porch	6'8" x 5'4"	36 sq. ft	No
17	Hall	3'4" x 6'0"	20 sq. ft	Yes
18	Bedroom	11'8" x 10'11"	128 sq. ft	Yes
19	Hall	7'5" x 3'4"	25 sq. ft	Yes

13440 Esposito St, Venice, FL, US

1 Floor 1 - Bath



Dimensions: 9'4" x 12'8"
Area: 99 sq. ft
Counted as living area: Yes

Heated: Yes
Finished: Yes
Enclosed: Yes
Contiguous: Yes
Permitted: Yes
Wet space: Yes
Addition: No
Conversion: No

2 Floor 1 - Laundry



Dimensions: 9'11" x 8'11"
Area: 71 sq. ft
Counted as living area: Yes

Heated: Yes
Finished: Yes
Enclosed: Yes
Contiguous: Yes
Permitted: Yes
Wet space: No
Addition: No
Conversion: No

13440 Esposito St, Venice, FL, US

3 Floor 1 - Dining Area



Dimensions: 11'6" x 11'8"
Area: 134 sq. ft
Counted as living area: Yes

Heated: Yes
Finished: Yes
Enclosed: Yes
Contiguous: Yes
Permitted: Yes
Wet space: No
Addition: No
Conversion: No

4 Floor 1 - Hall



Dimensions: 3'7" x 3'7"
Area: 13 sq. ft
Counted as living area: Yes

Heated: Yes
Finished: Yes
Enclosed: Yes
Contiguous: Yes
Permitted: Yes
Wet space: No
Addition: No
Conversion: No

5 Floor 1 - Living Room



Dimensions: 13'10" x 19'2"
Area: 265 sq. ft
Counted as living area: Yes

Heated: Yes
Finished: Yes
Enclosed: Yes
Contiguous: Yes
Permitted: Yes
Wet space: No
Addition: No
Conversion: No

13440 Esposito St, Venice, FL, US

6 Floor 1 - Bedroom



Dimensions: 12'9" x 11'7"
Area: 148 sq. ft
Counted as living area: Yes

Heated: Yes
Finished: Yes
Enclosed: Yes
Contiguous: Yes
Permitted: Yes
Wet space: No
Addition: No
Conversion: No

7 Floor 1 - Bath



Dimensions: 8'0" x 5'5"
Area: 43 sq. ft
Counted as living area: Yes

Heated: Yes
Finished: Yes
Enclosed: Yes
Contiguous: Yes
Permitted: Yes
Wet space: Yes
Addition: No
Conversion: No

8 Floor 1 - Garage



Dimensions: 18'5" x 33'7"
Area: 515 sq. ft
Counted as living area: No

Heated: No
Finished: No
Enclosed: Yes
Contiguous: Yes
Permitted: Yes
Wet space: No
Addition: No
Conversion: No

9 Floor 1 - WC



Dimensions: 3'2" x 5'3"
Area: 17 sq. ft
Counted as living area: Yes

Heated: Yes
Finished: Yes
Enclosed: Yes
Contiguous: Yes
Permitted: Yes
Wet space: Yes
Addition: No
Conversion: No

10 Floor 1 - Foyer



Dimensions: 7'11" x 17'9"
Area: 124 sq. ft
Counted as living area: Yes

Heated: Yes
Finished: Yes
Enclosed: Yes
Contiguous: Yes
Permitted: Yes
Wet space: No
Addition: No
Conversion: No

11 Floor 1 - Primary Bedroom



Dimensions: 13'2" x 15'1"
Area: 200 sq. ft
Counted as living area: Yes

Heated: Yes
Finished: Yes
Enclosed: Yes
Contiguous: Yes
Permitted: Yes
Wet space: No
Addition: No
Conversion: No

12 Floor 1 - Screened Porch



Dimensions: 25'8" x 20'2"
Area: 373 sq. ft
Counted as living area: No

Heated: No
Finished: Yes
Enclosed: No
Contiguous: Yes
Permitted: Yes
Wet space: No
Addition: No
Conversion: No

13 Floor 1 - Kitchen



Dimensions: 13'11" x 19'1"
Area: 238 sq. ft
Counted as living area: Yes

Heated: Yes
Finished: Yes
Enclosed: Yes
Contiguous: Yes
Permitted: Yes
Wet space: No
Addition: No
Conversion: No

14 Floor 1 - Pantry



Dimensions: 3'8" x 4'4"
Area: 14 sq. ft
Counted as living area: Yes

Heated: Yes
Finished: Yes
Enclosed: Yes
Contiguous: Yes
Permitted: Yes
Wet space: No
Addition: No
Conversion: No

15 Floor 1 - W.I.C.



Dimensions: 10'10" x 6'0"
Area: 65 sq. ft
Counted as living area: Yes

Heated: Yes
Finished: Yes
Enclosed: Yes
Contiguous: Yes
Permitted: Yes
Wet space: No
Addition: No
Conversion: No

16 Floor 1 - Porch



Dimensions: 6'8" x 5'4"
Area: 36 sq. ft
Counted as living area: No

Heated: No
Finished: Yes
Enclosed: No
Contiguous: Yes
Permitted: Yes
Wet space: No
Addition: No
Conversion: No

17 Floor 1 - Hall



Dimensions: 3'4" x 6'0"
Area: 20 sq. ft
Counted as living area: Yes

Heated: Yes
Finished: Yes
Enclosed: Yes
Contiguous: Yes
Permitted: Yes
Wet space: No
Addition: No
Conversion: No

18 Floor 1 - Bedroom



Dimensions: 11'8" x 10'11"
Area: 128 sq. ft
Counted as living area: Yes

Heated: Yes
Finished: Yes
Enclosed: Yes
Contiguous: Yes
Permitted: Yes
Wet space: No
Addition: No
Conversion: No

19 Floor 1 - Hall



Dimensions: 7'5" x 3'4"
Area: 25 sq. ft
Counted as living area: Yes

Heated: Yes
Finished: Yes
Enclosed: Yes
Contiguous: Yes
Permitted: Yes
Wet space: No
Addition: No
Conversion: No